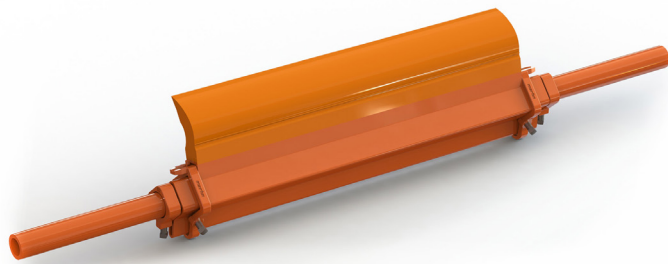


# Martin® QB1™ Cleaner PV



The [Martin® QB1™ Cleaner PV](#) introduces the next generation of belt cleaning technology.

A truly revolutionary innovation in belt cleaning design, the QB1™ Cleaner PV provides the cleanest belt and longest blade life— at the lowest cost.

## FEATURES & BENEFITS

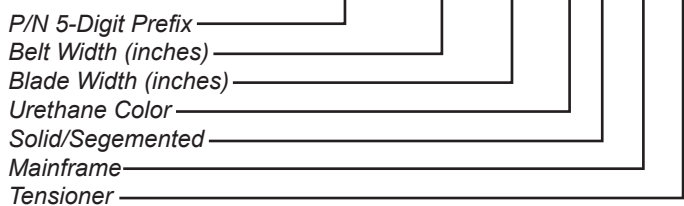
- Same ease of installation as current Martin® QC1™ Cleaners, maintaining standard installation and service costs.
- Utilizes Martin’s highly effective, patented CARP profile, ensuring the highest level of cleaning performance expected from a Martin® Belt Cleaner.
- Utilizes Martin’s innovative EVO® design principles to reduce component surface exposure to material flow, minimizing material build-up and the resulting clean-up costs, production interruptions and safety concerns.

## SPECIFICATIONS

| Maximum Belt Speed<br>fpm (m/sec) | Maximum Service Temperature                          | Pulley Diameter<br>in. (mm) | Mounting Location<br>in. (mm) |
|-----------------------------------|--|-----------------------------|-------------------------------|
| 500 (2.54)                        | 150°F (66°C) Continuous<br>180°F (82°C) Intermittent | 12–16 (300–400)             | 2.75 (70)                     |

High-performance urethanes are available; see your Martin Engineering representative for assistance in specifying non-standard products. Refer to Form No. L3375.

## NOMENCLATURE C1QPA - SXX SXX X X R X



### BLADE LENGTH

- 000: No Blade
- SA0: 100 Inches
- SA2: 102 Inches
- SA4: 104 Inches
- SA8: 108 Inches

### SOLID/SEGMENTED

- 11: No slits or segments
- 10: Segments only

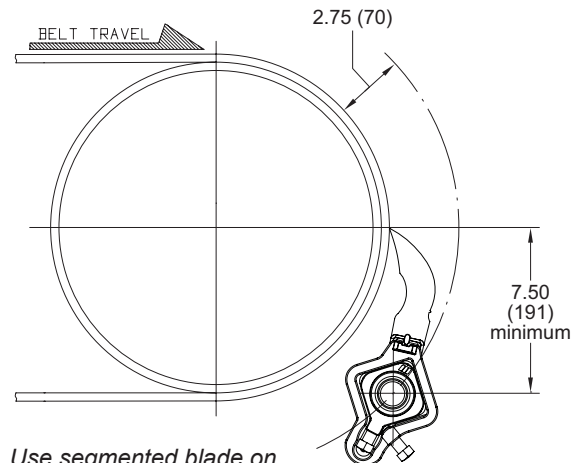
### URETHANE COLOR

- 0: No Blade
- B: Brown
- T: Tan
- G: Green
- N: Navy Blue
- O: Orange

### TENSIONER

- O: Martin® Twist Tensioner (old style)
- T: Martin® Twist Tensioner (new style)
- S: Martin® Spring Tensioner
- C: Martin® Spring Cable Tensioner
- M: Martin® Spring Cable Tensioner with mounting kit

## MOUNTING LOCATION



Use segmented blade on crowned head pulley.

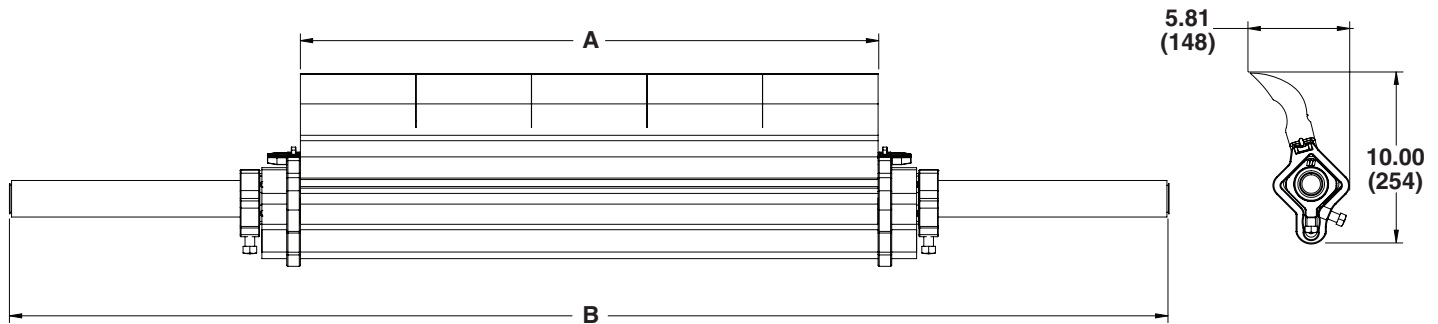
# TECHNICAL DATA SHEET

## DIMENSIONS -- in. (mm)

| Belt Width<br>in. (mm) |             | Mainframe Length (B)<br>in. (mm) |        |
|------------------------|-------------|----------------------------------|--------|
| 18                     | (400-500)   | 34                               | (864)  |
| 24                     | (500-650)   | 40                               | (1016) |
| 30                     | (650-800)   | 46                               | (1168) |
| 36                     | (800-1000)  | 60                               | (1524) |
| 42                     | (1000-1200) | 72                               | (1829) |
| 48                     | (1200-1400) | 78                               | (1981) |
| 54                     | (1400-1600) | 84                               | (2134) |
| 60                     | (1600-1700) | 90                               | (2286) |
| 66                     | (1700-1800) | 96                               | (2438) |
| 72                     | (1800-2000) | 102                              | (2591) |

Note: Dimension A equals belt width minus either 4, 6, or 8 inches.

Dual Tensioners are required for belt widths 54 in. (1400 mm) and greater.



## RECOMMENDED TENSIONERS & REPLACEMENT BLADES

| Tensioner                      | P/N   |
|--------------------------------|-------|
| Martin® Twist Tensioner        | 38850 |
| Martin® Spring Tensioner       | 38180 |
| Martin® Spring Cable Tensioner | 37944 |

| Replacement Blade P/N |
|-----------------------|
| C1QPBSXXXX            |

## ACCESSORIES

| Part                                   | P/N      |
|--|----------|
| Martin® Steel Inspection Door          | CYA-0912 |
| Martin® Hanger Mount Standard Assembly | 27382    |

## FREQUENTLY ASKED QUESTIONS

My Pre-Cleaner keeps flipping through.

*The mounting location may be too far away from the belt. Relocate to the proper dimension. Replace the mainframe or end weldments if they are bent.*

My Pre-Cleaner is wearing more in the center of the blade.

*The blade is too wide for this application. Replace with a shorter length blade.*



### Martin Engineering USA

One Martin Place  
Neponset, IL 61345-9766 USA  
800 544 2947 or 309 852 2384  
Fax 800 814 1553  
www.martin-eng.com

**COMPANY WITH  
QUALITY SYSTEM  
CERTIFIED BY DNV  
= ISO 9001:2008 =**

**Problem Solved™ GUARANTEED!**

Form No. L4104-03/18  
© Martin Engineering Company 2018