

PART NUMBER (2ND, 3RD, & 4TH X)	BELT WIDTH [IN]	PART NUMBER (2ND, 3RD, & 4TH X)	BELT WIDTH [MM]
C1CLXR524XXX	24	C1CLXR075XXX	750
C1CLXR30XXX	30	C1CLXR080XXX	800
C1CLXR36XXX	36	C1CLXR090XXX	900
C1CLXR42XXX	42	C1CLXR100XXX	1000
C1CLXR48XXX	48	C1CLXR105XXX	1050
C1CLXR54XXX	54	C1CLXR120XXX	1200
		C1CLXR135XXX	1350
		C1CLXR140XXX	1400

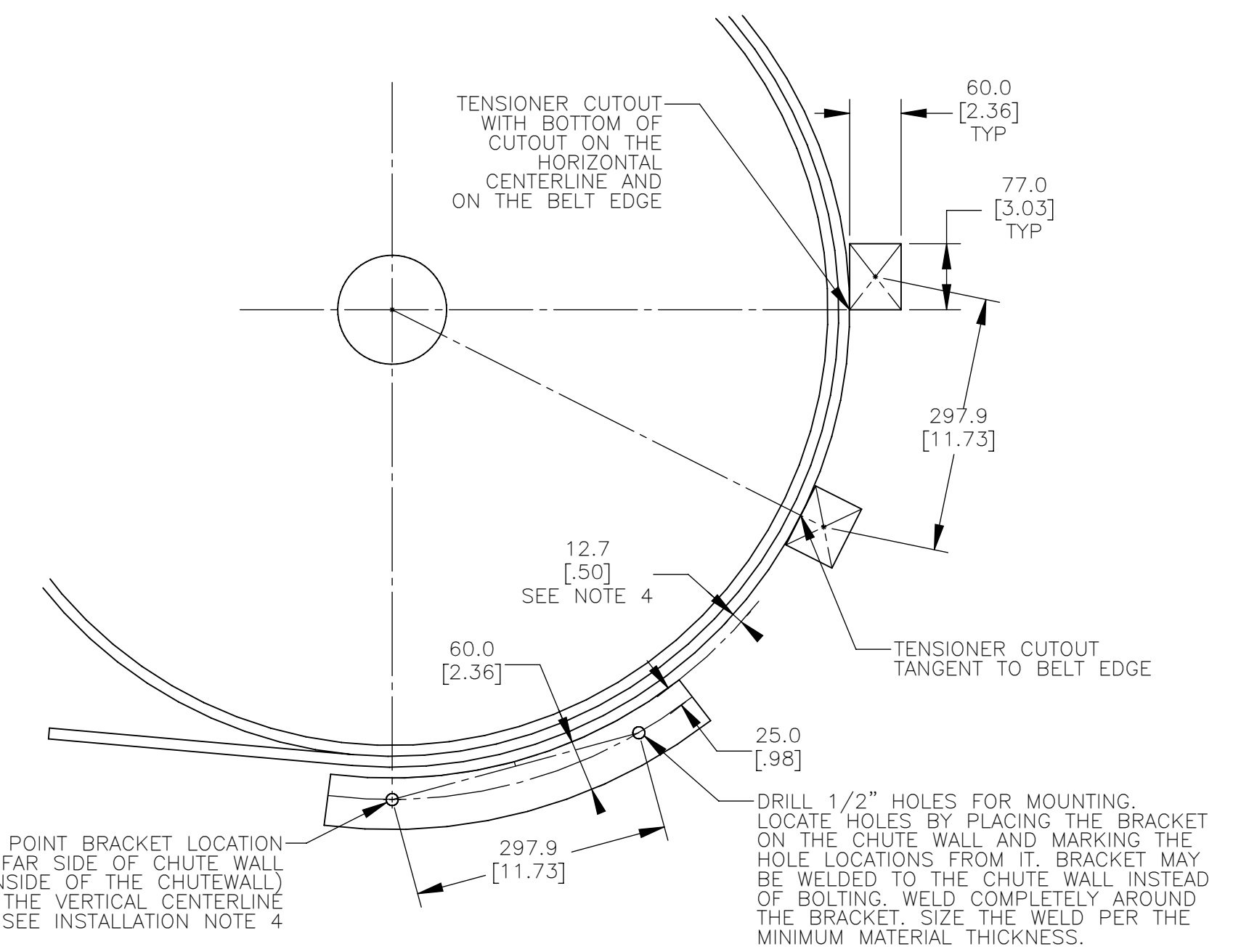
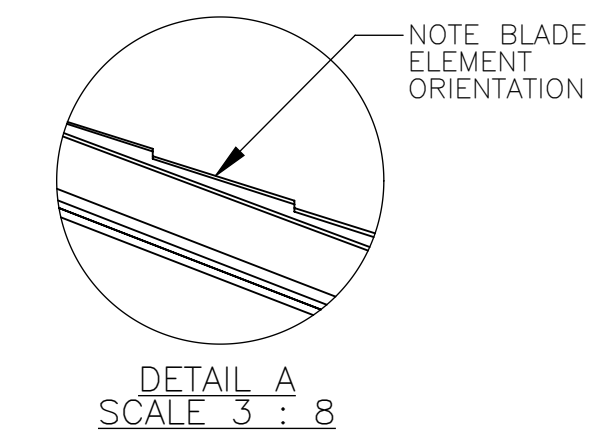
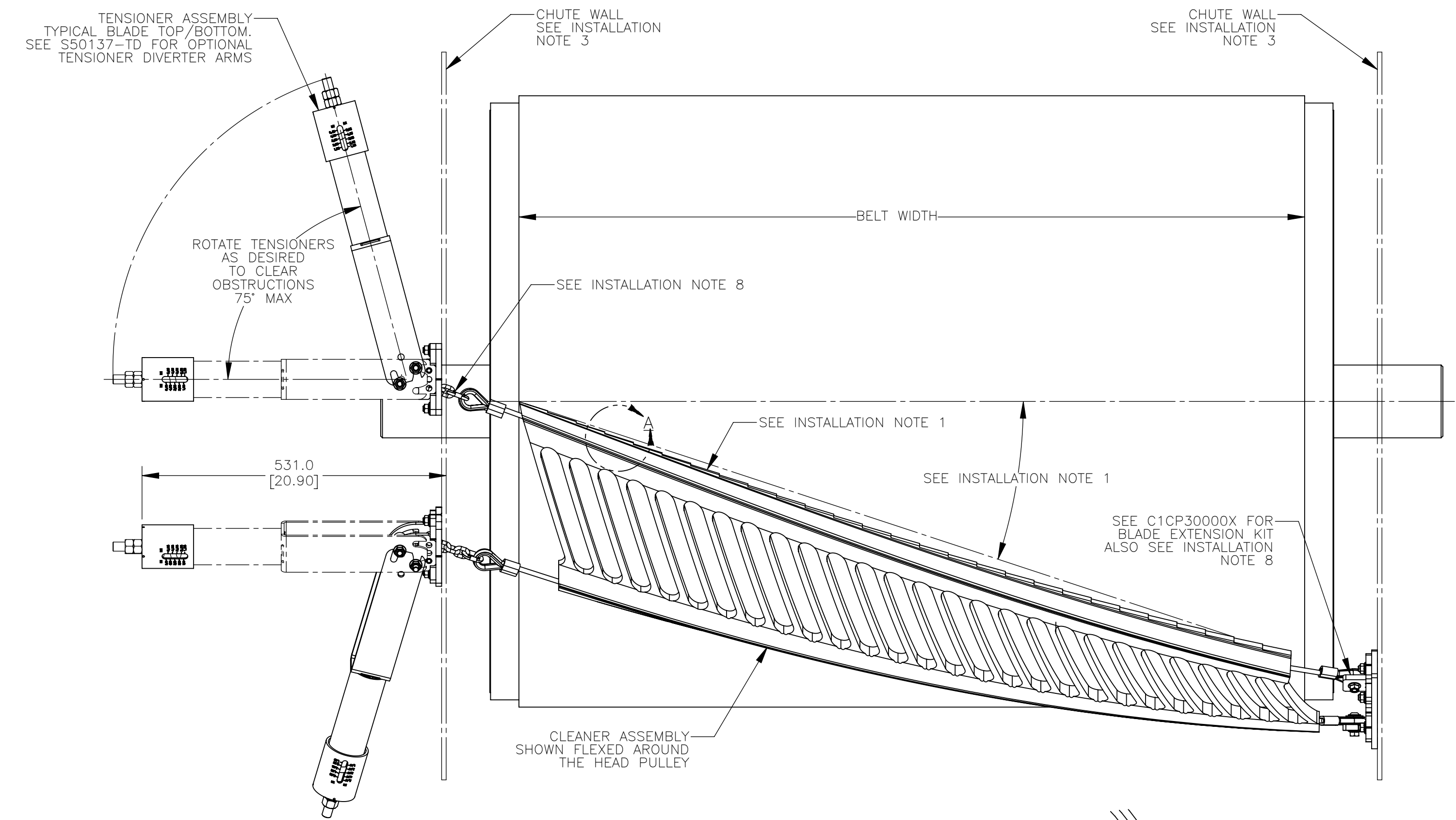
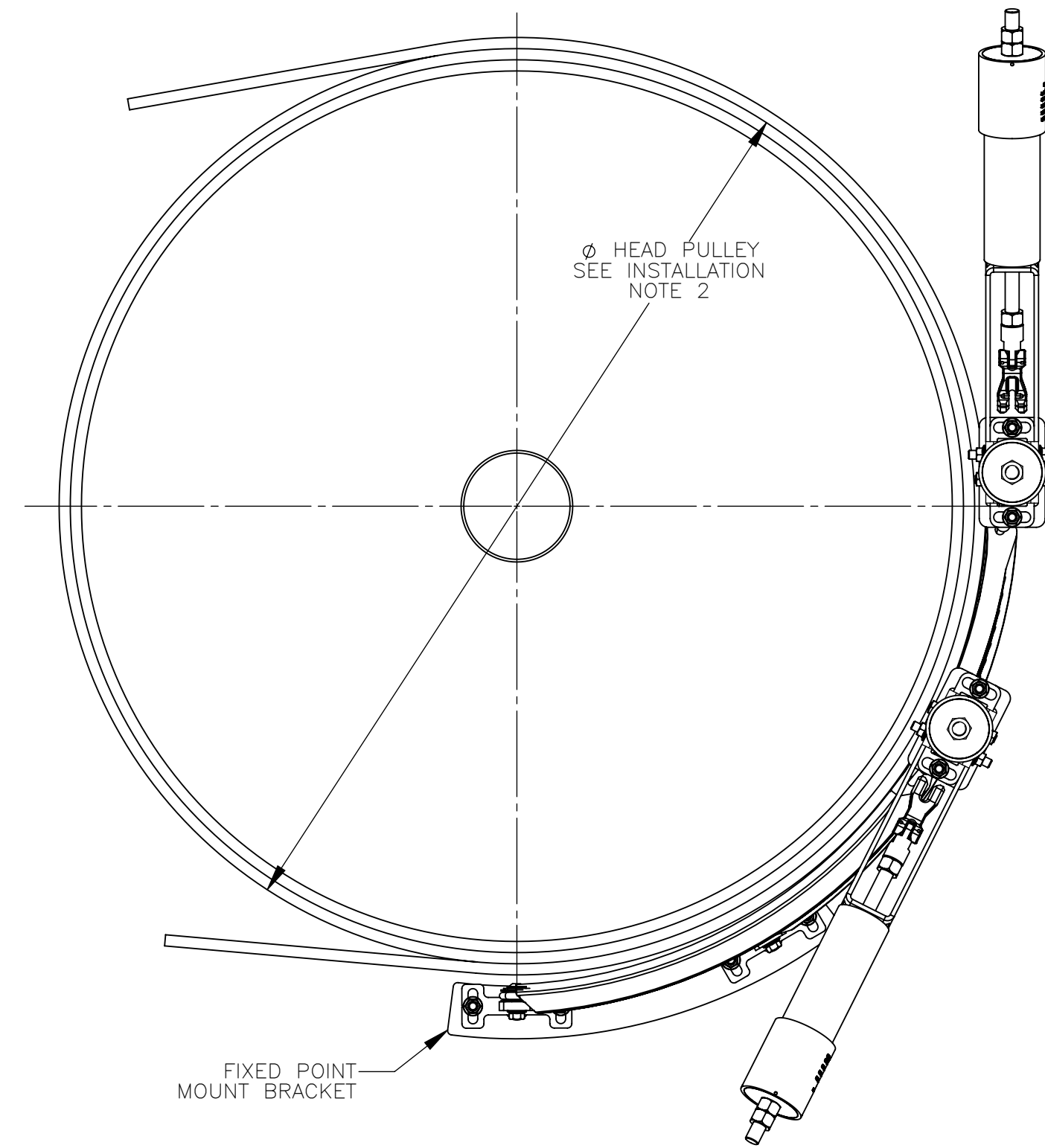
(PART NUMBER FIRST X) TENSIONER/INSTALLATION KIT REQUIREMENTS AND MATERIAL		
PART NUMBER	TENSIONER/TENSIONER SIZE/INSTALLATION KIT MATERIAL	P/N INSTALLATION KIT
C1CLBRXXXXXX	NO TENSIONER/BLADE ONLY FOR SINGLE TENSIONER	-----
C1CLRXXXXXX	SINGLE 4.2KN TENSIONER WITH FIXED POINT MNT BRKT STL	C1CT4LT
C1CLSRXXXXXX	SINGLE 4.2KN TENSIONER WITH FIXED POINT MNT BRKT SS	C1CT4LS

(PART NUMBER 5TH X) BLADE CARBIDE TYPE	
PART NUMBER	APPLICATION
C1CLRXXXXXX	STANDARD/MODERATE VERSION, SUITABLE FOR ABRASIVE MATERIALS AND LOW/MEDIUM BELT SPEEDS, ALLOWED FOR MECHANICAL SPLICES, HAS CHEMICAL RESISTANCE
C1CLRXXXXXX	SEVERE VERSION, SUITABLE FOR HIGHLY ABRASIVE MATERIALS AND HIGH BELT SPEEDS, ALLOWED FOR MECHANICAL SPLICES
C1CLRXXXXXX	EXTREME VERSION, SUITABLE FOR EXTREMELY ABRASIVE MATERIALS AND HIGHEST BELT SPEEDS, NOT ALLOWED FOR MECHANICAL SPLICES

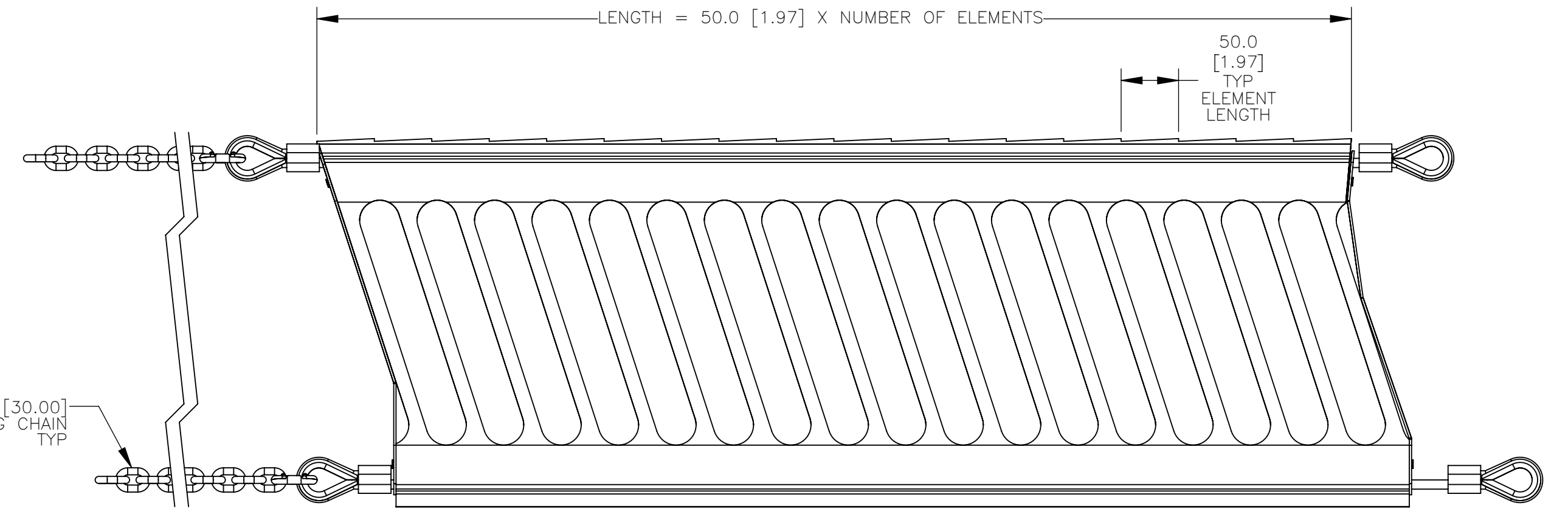
ITEM	QTY.	DESCRIPTION	PART NUMBER
1	1	MARTIN CLEANSRAPE CLEANER ASSEMBLY	SEE CHARTS

- NOTES:
- ALL DIMENSIONS ARE GIVEN IN MILLIMETERS [INCHES].
 - ALL DIMENSIONS ARE FOR REFERENCE ONLY.
 - IN THE C1C PART NUMBER:
 - THE L INDICATES A LARGE CLEANSRAPE BLADE/SYSTEM ASSEMBLY.
 - THE FIRST X INDICATES THE ASSEMBLY TYPE:
 - B = BLADE ASSEMBLY, NO TENSIONER
 - T = BLADE ASSEMBLY, TENSIONER STANDARD PAINTED STEEL
 - S = BLADE ASSEMBLY, TENSIONER STAINLESS STEEL
 - THE R INDICATES RUBBER BLADE BODY MATERIAL.
 - THE NEXT XXX INDICATES THE BELT WIDTH:
 - SXX = INCH BELT WIDTH
 - XXX = MM BELT WIDTH / 10
 - THE NEXT X INDICATES BLADE CARBIDE TYPE:
 - A = A CARBIDE GRADE
 - B = B CARBIDE GRADE
 - C = C CARBIDE GRADE
 - THE LAST XX INDICATES NUMBER OF ELEMENTS IN THE BLADE.

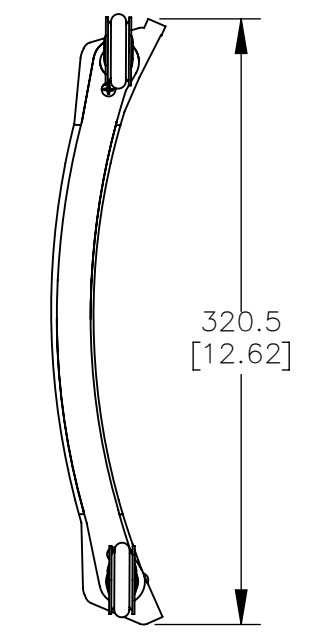
- INSTALLATION NOTES:
- BLADE CARBIDE SCRAPERS ARE MOLDED INTO THE RUBBER BODY AT AN ANGLE CREATING A SERRATED CLEANING EDGE. CLEANER MUST BE MOUNTED AT AN ANGLE AS SHOWN. THE IDEAL INSTALLATION ANGLE IS BETWEEN 17° AND 19°. ANGLES FROM 15° TO 21° ARE ACCEPTABLE BUT TENSIONER TENSION NEEDS TO BE ADJUSTED AS THE ANGLE CHANGES FROM THE IDEAL ANGLE. CLEANER MUST NOT LIE IN THE MATERIAL PATH.
 - BELT WIDTH MUST NOT EXCEED A RATIO OF 3:1 TO THE HEAD PULLEY DIAMETER. HEAD PULLEY RANGE IS 915 [36.00] MIN. TO 1270 [50.00] MAX.
 - CHUTE WALLS MUST BE STRONG ENOUGH TO NOT FLEX WHEN THE CLEANER IS TENSIONED. ADDITIONAL CHUTE WALL STRUCTURE MAY BE REQUIRED TO PREVENT CHUTE WALL FROM FLEXING.
 - LOCATE AND INSTALL THE FIXED POINT MOUNT BRACKET ON THE INSIDE OF THE FAR SIDE CHUTE WALL. MEASURE THE HEAD PULLEY RADIUS PLUS THE LAGGING, BELT THICKNESS, AND ADD THE 12.7 [1.50]. THIS IS THE RADIUS ARC THAT THE FIXED POINT BRACKET WILL BE LOCATED ON. LOCATE THE FIXED POINT BRACKET LOWER MOUNTING HOLE ON THE VERTICAL CENTERLINE OF THE HEAD PULLEY (AT THE 6:00 O'CLOCK POSITION). THIS POINT MAY BE ADJUSTED (ROTATED) TO ENSURE IT DOES NOT GO PAST THE BELT EXIT POINT ON THE HEAD PULLEY. MARK THE HOLE LOCATIONS FROM THE FIXED POINT BRACKET AND DRILL THE MOUNTING HOLES (IF NOT WELDING IN PLACE). BOLT OR WELD THE FIXED POINT BRACKET TO THE INSIDE OF THE CHUTE WALL.
 - ON THE OPERATORS SIDE OF THE CHUTE WALL MARK THE LOCATION OF THE TENSIONER CUTOUTS. LOCATE THE TOP TENSIONER CUTOUT WITH THE BOTTOM OF THE CUTOUT ON THE HORIZONTAL CENTERLINE (AT THE 3:00 O'CLOCK POSITION), AND THE INSIDE OF THE CUTOUT ON THE BELT EDGE. ADJUST THE TENSIONER CUTOUTS AS REQUIRED TO KEEP THE CLEANER BELOW THE PRODUCT DISCHARGE POINT AND AT THE SPECIFIED INSTALLATION ANGLE. THE TOP OF THE CLEANER SHOULD NOT BE ABOVE THE 2:00 O'CLOCK POSITION. SEE THE CUTOUT DETAIL. WELD THE TENSIONER MOUNT BRACKETS TO THE CHUTE WALL POSITIONED OVER THE CUTOUTS. BOLT THE TENSIONERS TO THE TENSIONER MOUNT BRACKETS. LEAVE THE ADJUSTMENT BOLTS LOOSE AT THIS TIME.
 - ASSEMBLE THE CHAIN AND THE CHAIN LINKS TO THE TENSIONER END OF THE BLADE. INSTALL THE CLEANER TO THE FIXED POINT BRACKET. LEAVE THE ADJUSTMENT BOLTS LOOSE AT THIS TIME. HOLD THE CLEANER TO THE HEAD PULLEY AND ROUTE THE CHAINS THROUGH THE CHUTE WALL AND HOOK ONTO THE TENSIONERS. MAKE SURE THE TENSIONER ADJUSTMENT NUTS ARE AT THE END OF THE TENSIONER THREADED ROD. TIGHTEN THE TENSIONER ADJUSTMENT NUT UNTIL THE CLEANER IS HELD FIRMLY AGAINST THE HEAD PULLEY. ADJUST THE FIXED POINT BRACKET AND TENSIONER BRACKETS SO THE OUTER TWO ELEMENTS ON EACH SIDE OF THE CLEANER ARE APPROXIMATELY 3.3 [1.31] AWAY FROM THE BELT. INCREASE THE RELIEF AS NECESSARY TO ENSURE MECHANICAL SPLICES WILL PASS. TIGHTEN ALL BOLTS.
 - TENSION THE CLEANER PER THE RECOMMENDED TENSION IN THE MANUAL. THE LENGTH OF THE CHAIN OR CABLE MUST NOT EXCEED 125 [5.00] ON EITHER SIDE OF THE CLEANER. EXCESS CHAIN OR CABLE COULD RESULT IN VIBRATION THAT COULD DAMAGE THE BELT OR THE CLEANER.



TENSIONER CHUTE CUTOUTS AND FIXED POINT BRACKET LOCATION
SCALE 5:32



BLADE DETAIL
SCALE 1:4



NO.	DESCRIPTION	ECN	DATE	BY
SOLIDWORKS	REVISION			

Copyright 2020 Martin Engineering. All rights reserved. Covered by U.S. and foreign patents pending and issued. ® and TM indicate trademarks of Martin Engineering.

MARTIN ENGINEERING—USA
NEPONSET, IL USA

MARTIN ENGINEERING
MARTIN ENGINEERING

TITLE	CLEANSRAPE LARGE CLEANER ASM'S WITH SINGLE 4.2KN TENS	DRAWN RND	DATE 03/09/20
CHECKED		CHECKED	
ENG.		DATE	03/17/20
APPROVED		DATE	03/17/20
SALES DRAWING		SCALE	5:32

NO. DESCRIPTION ECN DATE BY

PR13491 S50137-L