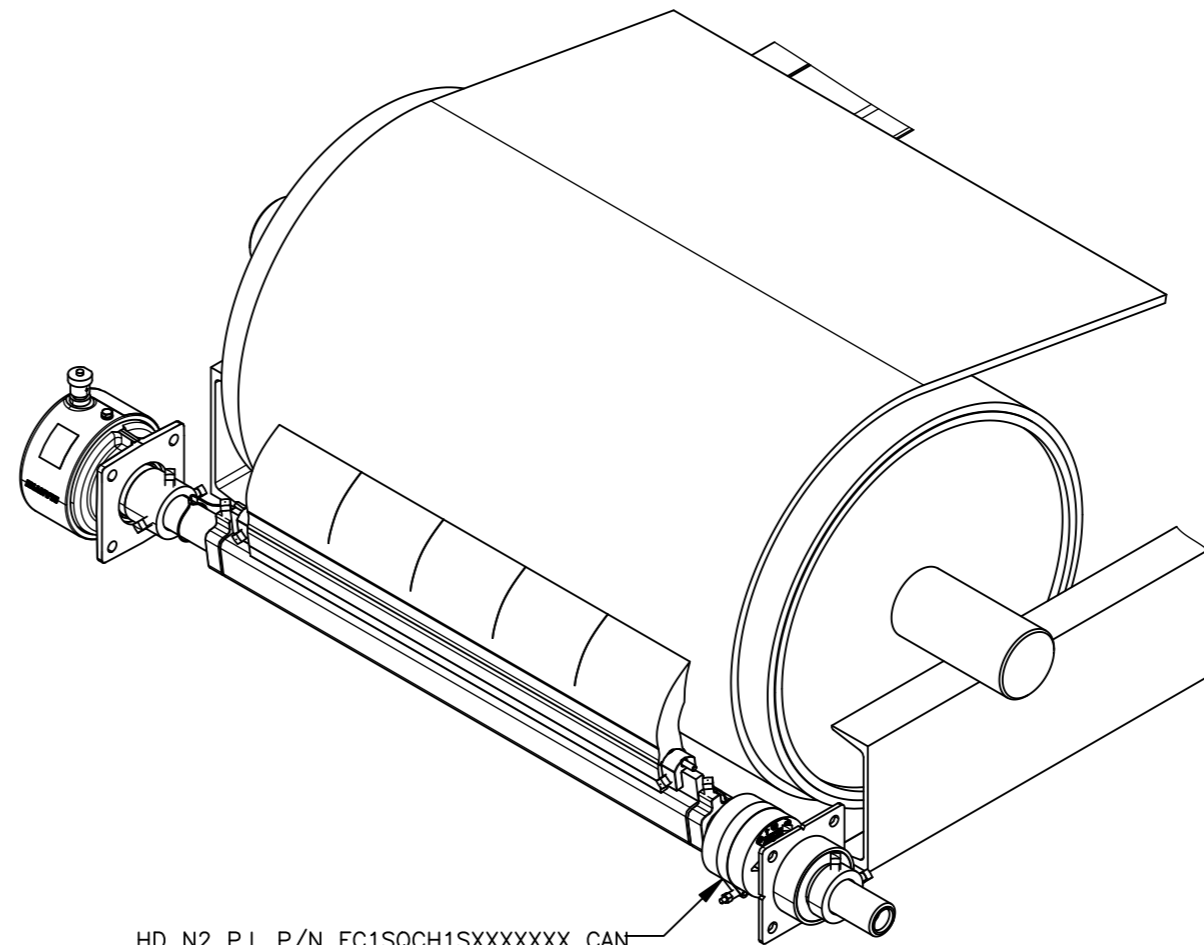


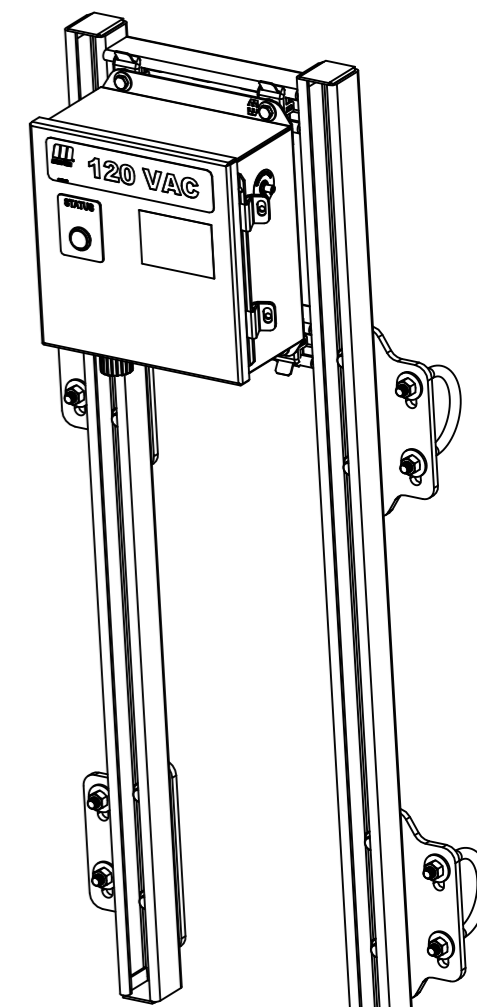
ISOMETRIC VIEW OF
P/N EC1SQCH1SXXXXXXX HD N2 P.I.
MOUNTED OUTSIDE OF CHUTE WORK

HD N2 P.I. P/N EC1SQCH1SXXXXXXX CAN
BE MOUNTED ON EITHER END OF THE
CLEANER

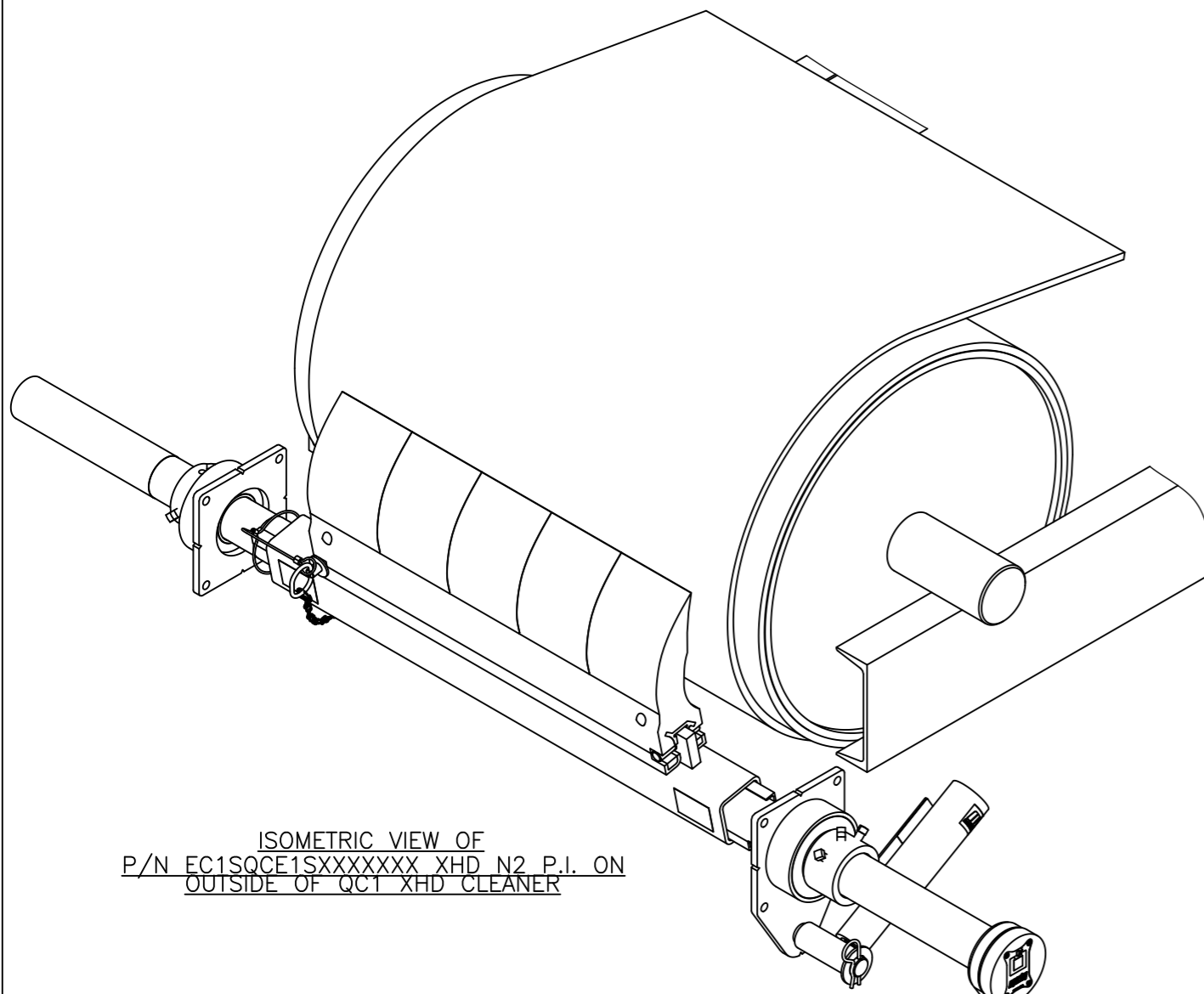


HD N2 P.I. P/N EC1SQCH1SXXXXXXX CAN
BE MOUNTED ON EITHER END OF THE
CLEANER

ISOMETRIC VIEW OF
P/N EC1SQCH1SXXXXXXX HD N2 P.I.
MOUNTED INSIDE CHUTE WORK



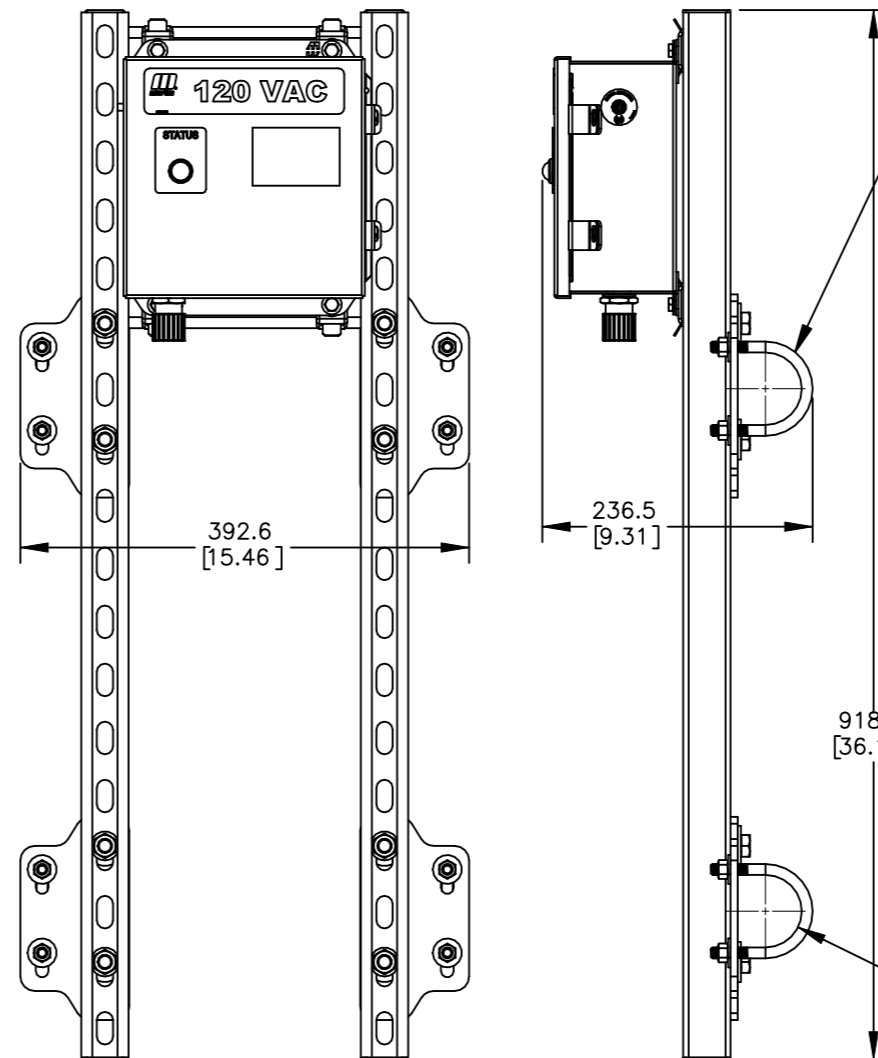
P/N EGC006XXXXXXX
ISOMETRIC VIEW
SCALE 3:16



ISOMETRIC VIEW OF
P/N EC1SQCE1SXXXXXXX XHD N2 P.I. ON
OUTSIDE OF QC1 XHD CLEANER

XHD N2 P.I. P/N EC1SQCE1SXXXXXXX
CAN BE MOUNTED ON EITHER END OF THE CLEANER

MOUNT ON SIDE NEAREST
FACING N2 GATEWAY



P/N EGC006XXXXXXX
N2 CELLULAR GATEWAY CABINET
SCALE 3:16

ADJUSTABLE BRACKETS FOR MOUNTING
ON THE CATWALK HANDRAIL BARS

- N2 CELLULAR GATEWAY CONTROL PANEL APPLICATION NOTES:
- 1) MOUNT CONTROL PANEL AT HIGHEST ELEVATION NEAREST THE CENTER OF ALL N2 POSITION INDICATORS.
 - 2) INSTALL ALL SENSORS WITHIN 800M [.5 MILE] OF SENSOR, NO CLOSER THAN 3M [9 FT] OF CONTROL PANEL.
 - 3) CONNECT BOTH ANTENNAS PRIOR TO POWERING ON.
 - 4) CONNECT 9V BATTERY INSIDE CONTROL PANEL PRIOR TO CONNECTING A/C POWER.
 - 5) OPERATING RANGE: -30°C TO +70°C [-22°F TO +158°F].
 - 6) SEE MANUAL M4139 FOR SETUP INSTRUCTIONS.
 - 7) 50HZ/60HZ 85-304VAC. 83W @ 110VAC 115W @ 220VAC MAX.

- POSITION INDICATOR (P.I.) APPLICATION NOTES:
- 1) CONTACT MARTIN ENGINEERING FOR ALTERNATE MOUNTING LOCATIONS.
 - 2) OPERATING RANGE: -40°C TO +70°C [-22°F TO +140°F].
 - 3) SEE MANUAL M4142 FOR SETUP INSTRUCTIONS.
 - 4) POWER: 2X AA L91 LITHIUM BATTERIES.
 - 5) EC1SQCE1SXXXXXXX COMPATIBLE WITH XHD AND HD MAX ASSEMBLIES.
 - 6) EC1SQCH1SXXXXXXX COMPATIBLE WITH HD AND PIT VIPER ASSEMBLIES.

- NOTES:
- 1) ALL DIMENSIONS ARE GIVEN IN MM [INCHES].
 - 2) ALL DIMENSIONS ARE FOR REFERENCE ONLY.

© Copyright 2020 Martin Engineering. All rights reserved. Covered by U.S. and foreign patents pending and issued. ® and ™ indicate trademarks of Martin Engineering.



MARTIN ENGINEERING
NEPONSET, IL USA

TITLE		DRAWN RND	
N2 POSITION INDICATORS W/ N2 CELLULAR GATEWAY CABINET		DATE 01/14/20	
SALES DRAWING		CHECKED	
MD0911		ENG. <i>JAH</i>	
S50134		DATE 01/20/20	
		APPROVED <i>JAH</i>	
		DATE 01/20/20	
		SCALE 3:16	

NO.	DESCRIPTION	ECN	DATE	BY
	REVISION			