

PART NUMBER	BELT WIDTH	DIM "A" FRAME LENGTH	DIM "B" BLADE WIDTH
C2C1S1802XXXX	18.00	400-500	48.00 [1219]
C2C1S1803XXXX	18.00	400-500	48.00 [1219]
C2C1S2403XXXX	24.00	500-650	54.00 [1372]
C2C1S2404XXXX	24.00	500-650	54.00 [1372]
C2C1S3004XXXX	30.00	650-800	60.00 [1524]
C2C1S3005XXXX	30.00	650-800	60.00 [1524]
C2C1S3605XXXX	36.00	800-1000	66.00 [1676]
C2C1S3606XXXX	36.00	800-1000	66.00 [1676]
C2C1S4206XXXX	42.00	1000-1200	72.00 [1829]
C2C1S4207XXXX	42.00	1000-1200	72.00 [1829]
C2C1S4807XXXX	48.00	1200-1400	78.00 [1981]
C2C1S4808XXXX	48.00	1200-1400	78.00 [1981]
C2C1S5408XXXX	54.00	1400-1600	84.00 [2137]
C2C1S5409XXXX	54.00	1400-1600	84.00 [2137]
C2C1S6009XXXX	60.00	1600-1800	90.00 [2286]
C2C1S6010XXXX	60.00	1600-1800	90.00 [2286]
C2C1S6610XXXX	66.00	1600-1800	96.00 [2438]
C2C1S6611XXXX	66.00	1600-1800	96.00 [2438]
C2C1S7211XXXX	72.00	1800-1900	102.00 [2591]
C2C1S7212XXXX	72.00	1800-1900	102.00 [2591]
C2C1S7812XXXX	78.00	1900-2000	108.00 [2743]
C2C1S7813XXXX	78.00	1900-2000	108.00 [2743]
C2C1S8413XXXX	84.00	2000-2100	114.00 [2896]
C2C1S8414XXXX	84.00	2000-2100	114.00 [2896]
C2C1S9014XXXX	90.00	2100-2200	120.00 [3048]
C2C1S9015XXXX	90.00	2100-2200	120.00 [3048]
C2C1S9615XXXX	96.00	2200-2400	126.00 [3200]
C2C1S9616XXXX	96.00	2200-2400	126.00 [3200]

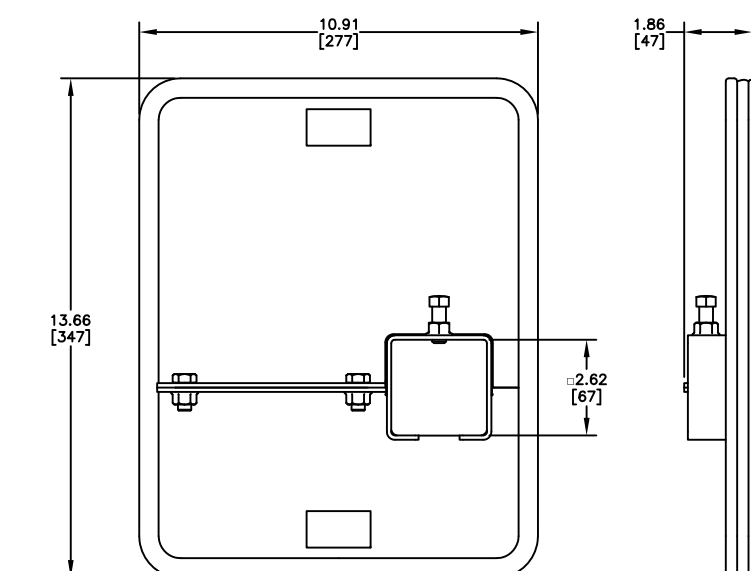
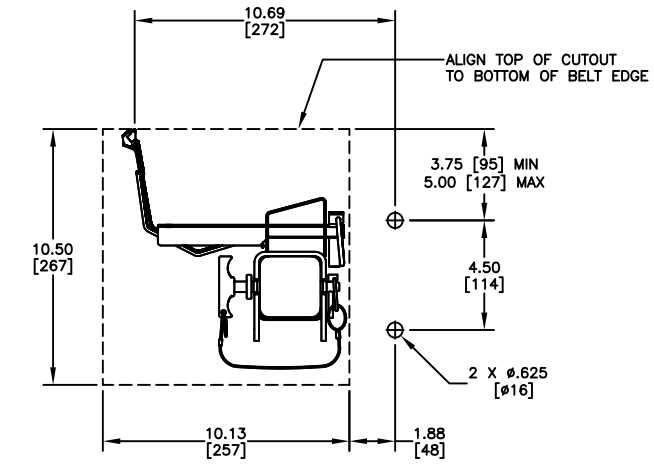
PART NUMBER	BELT WIDTH	DIM "A" FRAME LENGTH
C2C1S1802XXXX	18.00	400-500
C2C1S1803XXXX	18.00	400-500
C2C1S2403XXXX	24.00	500-650
C2C1S2404XXXX	24.00	500-650
C2C1S3004XXXX	30.00	650-800
C2C1S3005XXXX	30.00	650-800
C2C1S3605XXXX	36.00	800-1000
C2C1S3606XXXX	36.00	800-1000
C2C1S4206XXXX	42.00	1000-1200
C2C1S4207XXXX	42.00	1000-1200
C2C1S4807XXXX	48.00	1200-1400
C2C1S4808XXXX	48.00	1200-1400
C2C1S5408XXXX	54.00	1400-1600
C2C1S5409XXXX	54.00	1400-1600
C2C1S6009XXXX	60.00	1600-1800
C2C1S6010XXXX	60.00	1600-1800
C2C1S6610XXXX	66.00	1600-1800
C2C1S6611XXXX	66.00	1600-1800
C2C1S7211XXXX	72.00	1800-1900
C2C1S7212XXXX	72.00	1800-1900
C2C1S7812XXXX	78.00	1900-2000
C2C1S7813XXXX	78.00	1900-2000
C2C1S8413XXXX	84.00	2000-2100
C2C1S8414XXXX	84.00	2000-2100
C2C1S9014XXXX	90.00	2100-2200
C2C1S9015XXXX	90.00	2100-2200
C2C1S9615XXXX	96.00	2200-2400
C2C1S9616XXXX	96.00	2200-2400

BLADE CHART	
PART NUMBER	BLADE MATERIAL
C2C1SXXXX1XXX	TUNGSTEN CARBIDE

TENSIONER CHART		
PART NUMBER	P/N ITEM 2	MATERIAL
C2C1SXXXXXSX	38664-SS	316 SS
C2C1SXXXXXTX	38664	STEEL

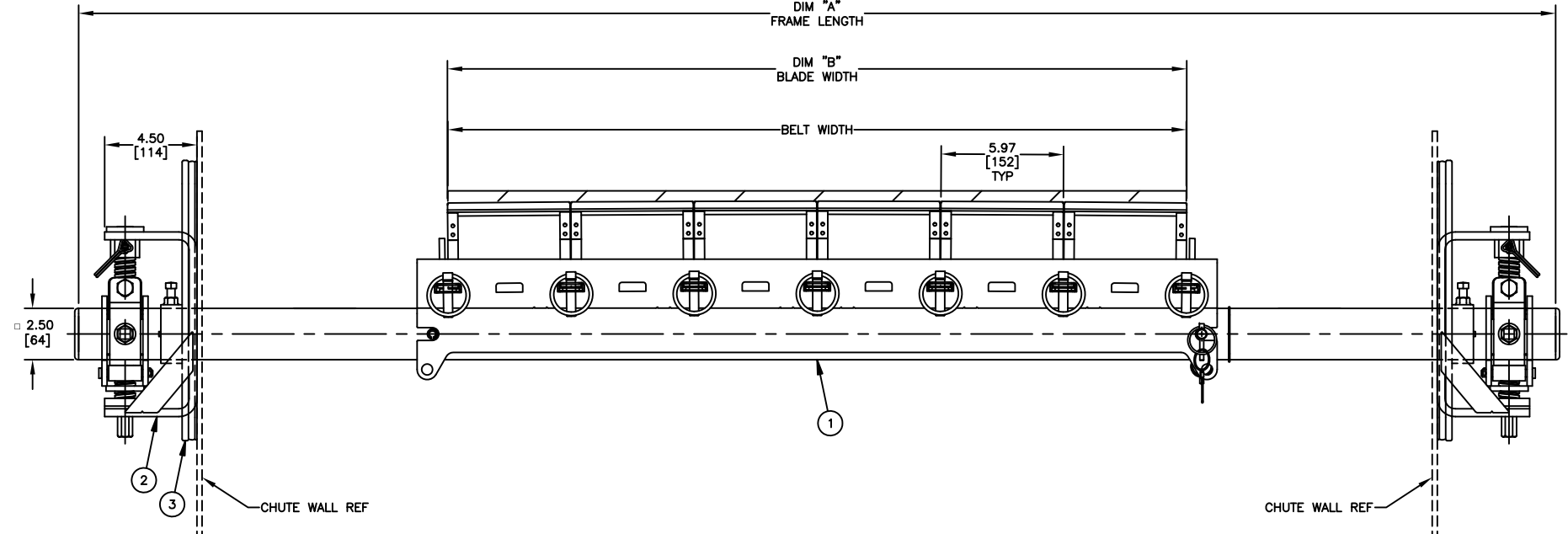
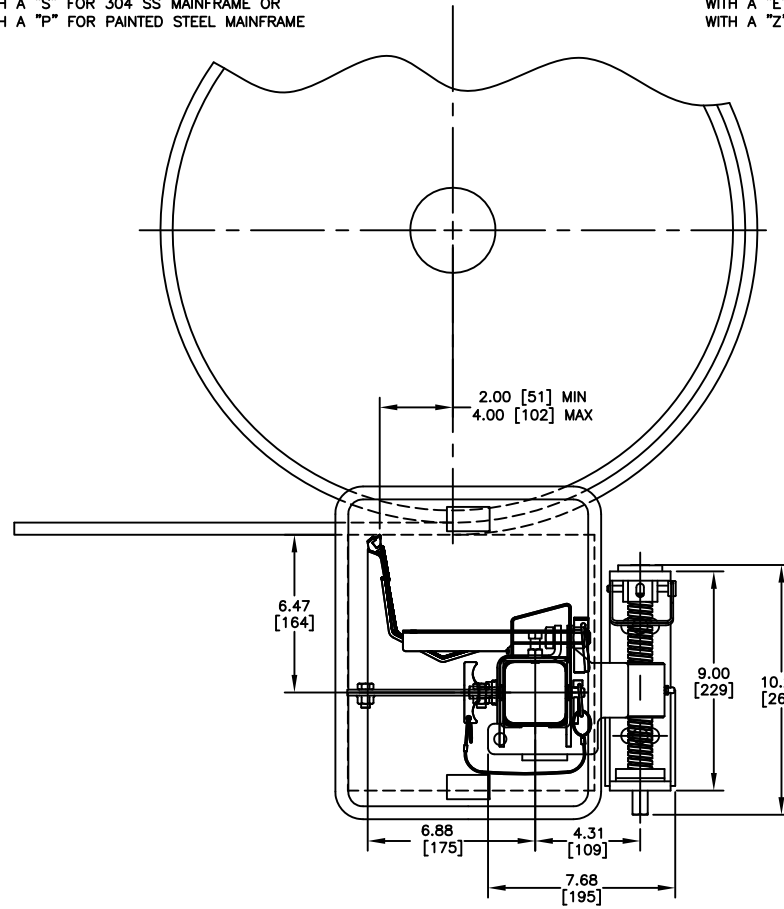
COVER DOOR CHART		
PART NUMBER	P/N ITEM 3	MATERIAL
C2C1SXXXXXSX	C2CP1027S	316 SS
C2C1SXXXXXTX	C2CP1027	STEEL

ITEM	QTY.	DESCRIPTION	PART NUMBER
1	1	CLEANSRAPE SECONDARY ASM	SEE CHART
2	1	SQUARE MAINFRAME TENSIONER ASM	SEE CHART
3	1	CLEANSRAPE SECONDARY COVER DOOR ASM	SEE CHART



REPLACE THE SECOND "X" IN THIS P/N WITH A "S" FOR 304 SS MAINFRAME OR WITH A "P" FOR PAINTED STEEL MAINFRAME

REPLACE THE SECOND "X" IN THIS P/N WITH A "E" FOR EXTENDED 304 SS MAINFRAME OR WITH A "Z" FOR EXTENDED PAINTED STEEL MAINFRAME



- NOTES:
- ALL DIMENSIONS ARE GIVEN IN INCHES [MM].
  - ALL DIMENSIONS ARE FOR REFERENCE ONLY.
  - FOR EASE OF ACCESSIBILITY AND MAINTENANCE MARTIN ENGINEERING RECOMMENDS BOLTING CLEANER TO EXISTING STRUCTURE WHEN APPLICABLE.
  - DUE TO STRUCTURAL TOLERANCES IN THE FIELD, DIMENSIONS AND LOCATIONS MAY VARY.
  - WHERE EXTREME AND UNUSUAL CONDITIONS EXIST, OR SPECIAL MAINFRAME LENGTHS ARE REQUIRED, CONTACT MARTIN ENGINEERING.
  - CUSTOMER MAY HAVE TO MODIFY STRUCTURE TO PROPERLY INSTALL CLEANER.
  - REFER TO OPERATOR'S MANUAL (M4128) FOR ADDITIONAL AND OPTIONAL INSTALLATION INSTRUCTIONS.
  - MARTIN ENGINEERING RECOMMENDS POSITIONING OF AN IDLER FOR PROPER BACKING SUPPORT OF THE BLADE IF NOT LOCATED ON THE HEAD PULLEY.
  - MAINFRAME IS SUPPLIED LONGER THAN REQUIRED, FIELD CUT TO DESIRED LENGTH.
  - LOCATE AND DRILL HOLES FOR TENSIONER BEFORE LOCATING ACCESS WINDOW.

- NOTES (CONT'D):
- 1) IN THE "C2C" PART NUMBER:
- THE 1 INDICATES CARTRIDGE TYPE MAINFRAME.
  - THE SXX INDICATES THE BELT WIDTH IN STANDARD INCH UNITS.
  - THE NEXT XX INDICATES THE NUMBER OF BLADES.
  - THE NEXT X INDICATES BLADE TUNGSTEN TYPE:
  - 1 = TUNGSTEN CARBIDE
  - THE NEXT X INDICATES THE MAINFRAME TYPE:
  - E = EXTENDED STAINLESS STEEL
  - S = STAINLESS STEEL
  - P = PAINTED STEEL
  - Z = EXTENDED PAINTED STEEL
  - THE NEXT X INDICATES THE TENSIONER OPTIONS:
  - 0 = NO TENSIONER
  - S = STAINLESS STEEL
  - T = STEEL
  - THE LAST X INDICATES THE DOOR OPTIONS:
  - 0 = NO DOOR
  - D = MILD STEEL
  - S = STAINLESS STEEL

Copyright 2019 Martin Engineering. All rights reserved. Covered by U.S. and foreign patents pending and issued. ® and TM indicate trademarks of Martin Engineering.

MARTIN ENGINEERING  
NEPONSET, IL USA

NO.	DESCRIPTION	ECN	DATE	BY
B	ADDED PAINTED STEEL MAINFRAME & TENSIONER OPTIONS TO CHARTS & NOTE: P = PAINTED STEEL, Z = EXTENDED PAINTED & T = STEEL (PR13975)	----	03/31/20	JAH
A	ADDED EXTENDED LENGTH MAINFRAME & DOOR OPTIONS	15476	10/21/19	JAH

TITLE	DATE	CHECKED	SCALE
MARTIN CLEANSRAPE SECONDARY BELT CLEANER	06/13/19	JAH	1/4

SALES DRAWING	NO.	DESCRIPTION	ECN	DATE	BY
PR13808	S50130				