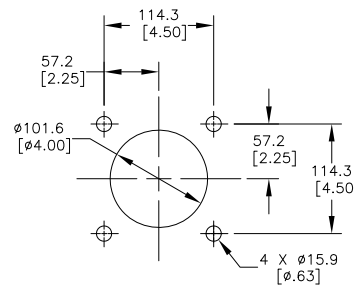


PART NUMBER	BELT WIDTH	DIMENSION "A" BLADE COVERAGE	DIMENSION "B" FRAME LENGTH
C1QCH3S18S8XXFX	457.2 [18.00]	254.0 [10.00]	863.6 [34.00]
C1QCH3S18S6XXFX	457.2 [18.00]	304.8 [12.00]	863.6 [34.00]
C1QCH3S18S4XXFX	457.2 [18.00]	355.6 [14.00]	863.6 [34.00]
C1QCH3S24S8XXFX	609.6 [24.00]	406.4 [16.00]	1168.4 [46.00]
C1QCH3S24S6XXFX	609.6 [24.00]	457.2 [18.00]	1168.4 [46.00]
C1QCH3S24S4XXFX	609.6 [24.00]	508.0 [20.00]	1168.4 [46.00]
C1QCH3S30S8XXFX	762.0 [30.00]	558.8 [22.00]	1320.8 [52.00]
C1QCH3S30S6XXFX	762.0 [30.00]	609.6 [24.00]	1320.8 [52.00]
C1QCH3S30S4XXFX	762.0 [30.00]	660.4 [26.00]	1320.8 [52.00]
C1QCH3S36S8XXFX	914.4 [36.00]	711.2 [28.00]	1524.0 [60.00]
C1QCH3S36S6XXFX	914.4 [36.00]	762.0 [30.00]	1524.0 [60.00]
C1QCH3S36S4XXFX	914.4 [36.00]	812.8 [32.00]	1524.0 [60.00]
C1QCH3S42S8XXFX	1066.8 [42.00]	863.6 [34.00]	1828.8 [72.00]
C1QCH3S42S6XXFX	1066.8 [42.00]	914.4 [36.00]	1828.8 [72.00]
C1QCH3S42S4XXFX	1066.8 [42.00]	965.2 [38.00]	1828.8 [72.00]
C1QCH3S48S8XXFX	1219.2 [48.00]	1016.0 [40.00]	1981.2 [78.00]
C1QCH3S48S6XXFX	1219.2 [48.00]	1066.8 [42.00]	1981.2 [78.00]
C1QCH3S48S4XXFX	1219.2 [48.00]	1117.6 [44.00]	1981.2 [78.00]

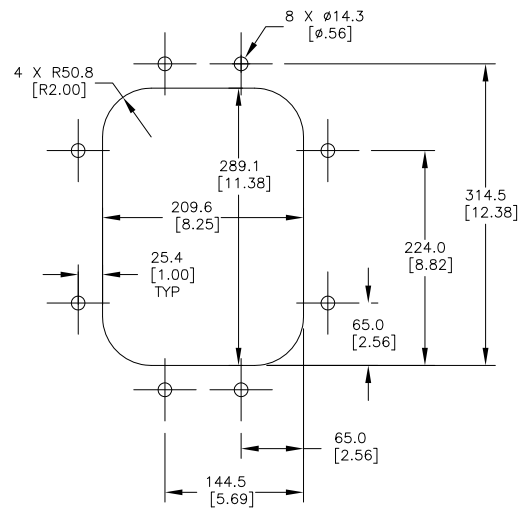
NOTES:

- 1) ALL DIMENSIONS ARE GIVEN IN MILLIMETERS [INCHES] AND ARE FOR REFERENCE ONLY.
- 2) IN THE C1QCH3 PART NUMBER THE FIRST SXX INDICATES THE BELT WIDTH IN STANDARD INCH UNITS FOR BELT WIDTHS 18 THRU 48.  
S18 = 18  
S24 = 24  
S30 = 30  
S36 = 36  
S42 = 42  
S48 = 48  
THE NEXT SX INDICATES THE LESS BELT WIDTH BLADE COVERAGE IN STANDARD INCH UNITS.  
00 = NO BLADE  
S4 = 4 LESS BELT WIDTH  
S6 = 6 LESS BELT WIDTH  
S8 = 8 LESS BELT WIDTH  
THE FOURTH X IN THE PART NUMBER INDICATES THE BLADE COLOR:  
0 = NO BLADE  
B = BROWN  
T = TAN  
G = GREEN  
N = NAVY BLUE  
O = ORANGE  
THE FIFTH X INDICATES IF THE BLADE IS SOLID OR SEGMENTED:  
0 = SEGMENTED BLADE / NO BLADE  
1 = SOLID BLADE  
THE F IN THE PART NUMBER INDICATES A STAINLESS STEEL MAINFRAME  
THE LAST X INDICATES THE TENSIONER OPTIONS:  
BLANK = NO TENSIONER  
F = STAINLESS STEEL TWIST TENSIONER (31443-SS)  
P = STAINLESS STEEL SPRING TENSIONER (38180-SS)  
ADD AN L TO THE END OF THE PART NUMBER TO GET A CLEANER LESS THE TORQUE TUBES.
- 3) THE FRAME IS ADJUSTABLE TO DESIRED LENGTH.
- 4) FOR BELT WIDTHS 54 AND OVER A DUAL SPRING TENSIONER ASSEMBLY IS REQUIRED (P/N 38180-2SS). SEE S50129-SS.
- 5) WHERE EXTREME OR UNUSUAL CONDITIONS EXIST, OR SPECIAL MAINFRAME LENGTHS ARE REQUIRED CONTACT MARTIN ENGINEERING.
- 6) SPRING TENSIONER MAY BE BOLTED OR WELDED IN PLACE. MARTIN ENGINEERING RECOMMENDS BOLTING WHEN APPLICABLE FOR EASIER MAINTENANCE AND ACCESSIBILITY.
- 7) REFER TO OPERATOR'S MANUALS M3263 AND M4124 FOR INSTALLATION INSTRUCTIONS.
- 8) CLEANER CAN BE LOCATED ANYWHERE ALONG THE ARC, AS LONG AS THE MAINFRAME IS OUT OF MATERIAL TRAJECTORY AND THE BLADE TIPS ARE BELOW THE HORIZONTAL CENTERLINE OF THE HEAD PULLEY.
- 9) THE QC1+ HD PRE-CLEANER BLADE IS DESIGNED TO REMOVE THE INITIAL CARRYBACK ONLY. DO NOT OVER TENSION.
- 10) THE QC1+ HD PRE-CLEANER BLADE IS DESIGNED FOR HEAD PULLEYS WITH A DIAMETER OF 406.4 [16.00] TO 558.8 [22.00].
- 11) BLADE COVERAGE IS LESS THAN BELT WIDTH, DUE TO POSSIBLE MISTRACKING OR DAMAGED EDGES OF THE BELT.
- 12) INSIDE CHUTE WALL WIDTH MUST BE A MINIMUM OF BELT WIDTH PLUS 127.0 [5.00] IN ORDER FOR CLEANER TO BE INSTALLED WITH TENSIONERS BOLTED DIRECTLY TO CHUTE WALL.

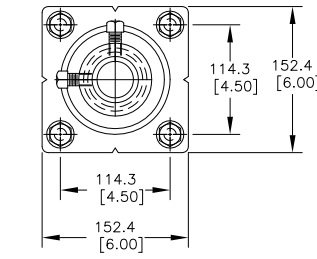
ASSEMBLY PART NO.	COLOR
C1QCH3SXXSXBFX	BROWN
C1QCH3SXXSXTFX	TAN
C1QCH3SXXSXGFX	GREEN
C1QCH3SXXSXNFX	NAVY BLUE
C1QCH3SXXSXOXFX	ORANGE



TENSIONER CHUTE WALL CUTOUT DETAIL  
TYPICAL BOTH SIDES

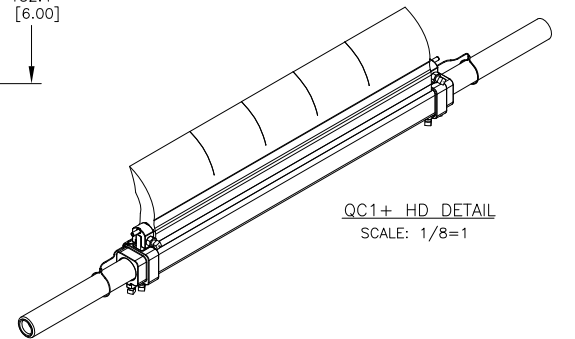


DOOR CUTOUT DETAIL  
FOR STEEL ACCESS DOOR

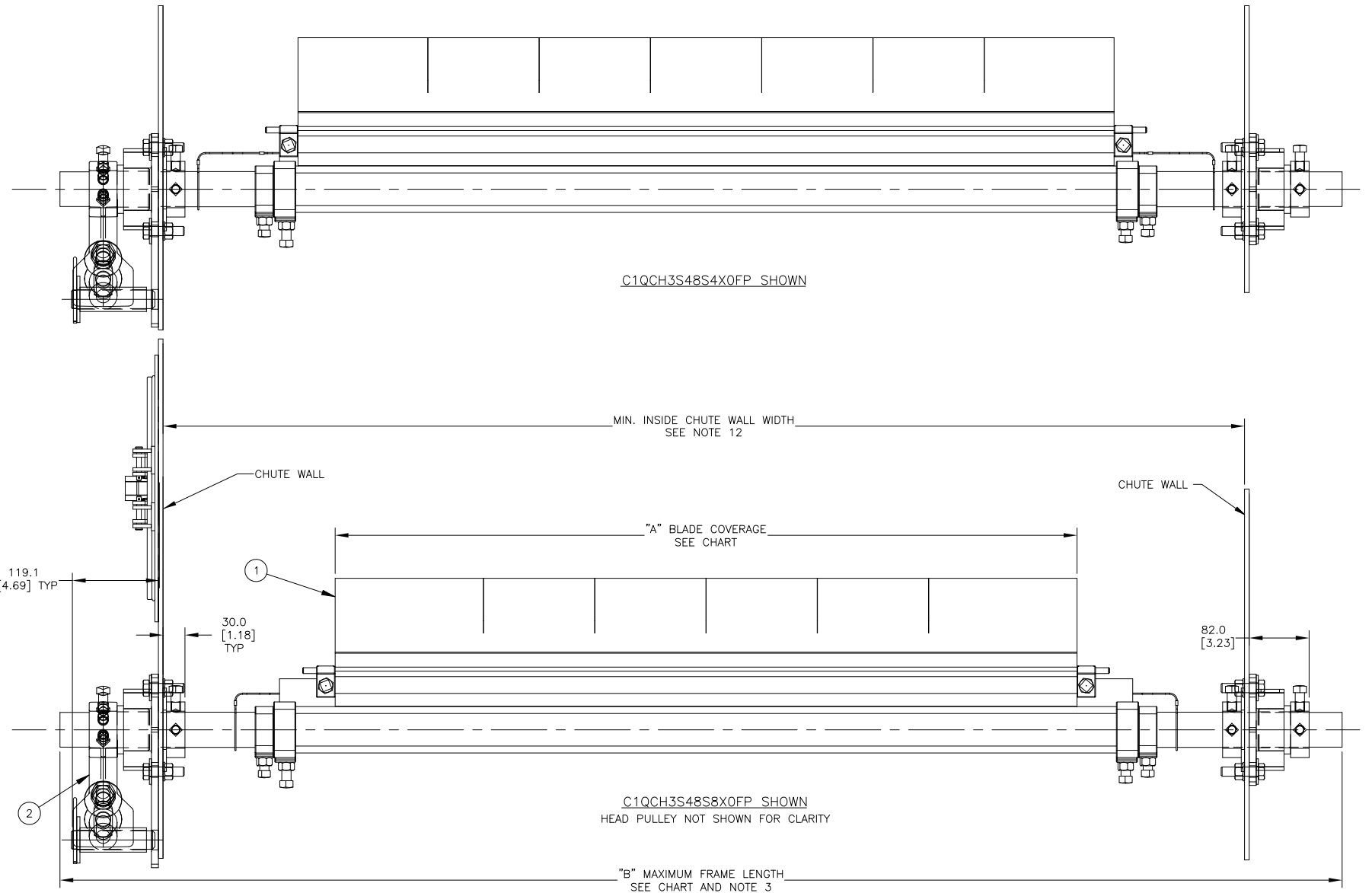
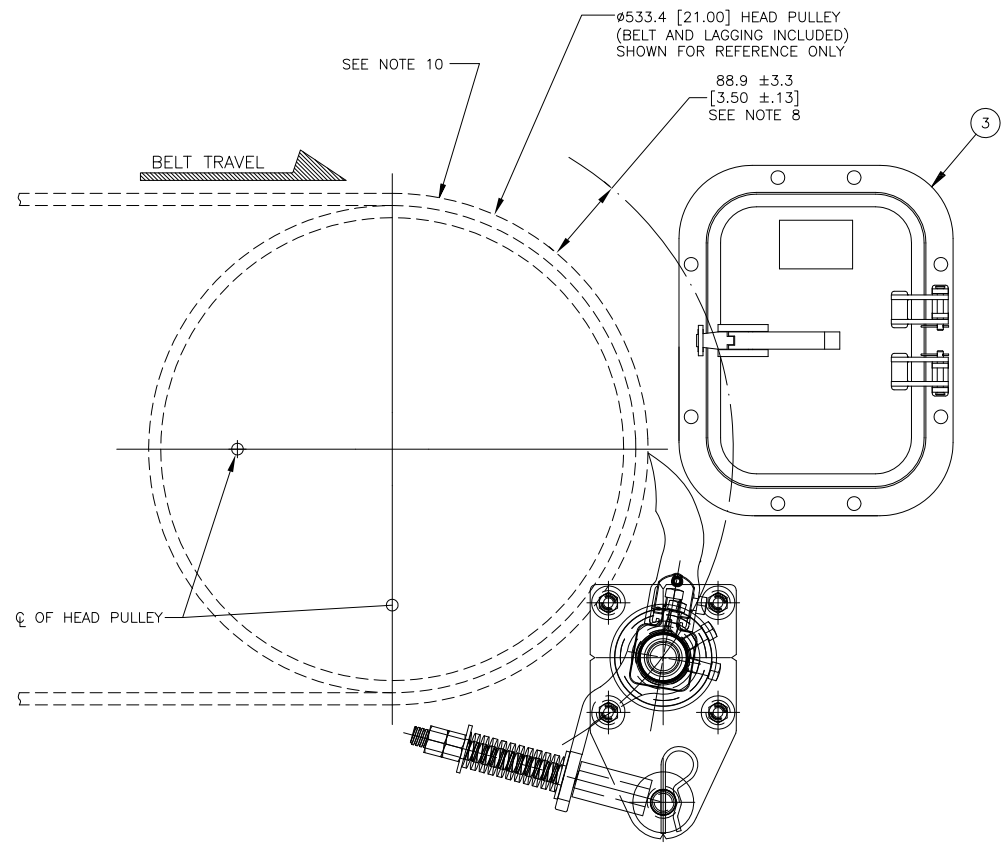


FARSIDE MOUNT DETAIL

ITEM	QTY.	DESCRIPTION	PART NUMBER
1	1	MARTIN QC1+ HD BLD SS MNFRM ASM	C1QCH3SXXSXXFX
2	1	MARTIN SS SPRING TENSIONER ASM	38180-SS
3	1	MARTIN LOW PROFILE SS DOOR 9X12	CYA-0912S



QC1+ HD DETAIL  
SCALE: 1/8=1



© Copyright 2019 Martin Engineering. All rights reserved. Covered by U.S. and foreign patents pending and issued. ® and TM indicate trademarks of Martin Engineering.



MARTIN ENGINEERING  
NEPONSET, IL USA

TITLE	DATE	REV	DESCRIPTION	BY	DATE	REV	DESCRIPTION
MARTIN QC1+ HD SS 3-PC ASM SS SPR TENSIONER ASM & SS STEEL DOOR 228.6 [9] X 304.8 [12]	05/14/19	1		JAH	10/06/20	1	

NO.	DESCRIPTION	ECN	DATE	BY
A	UPDATED P/N NOTE	15751	10/06/20	JAH

SALES DRAWING  
PR13753  
S50129-SSS  
SCALE 1/4