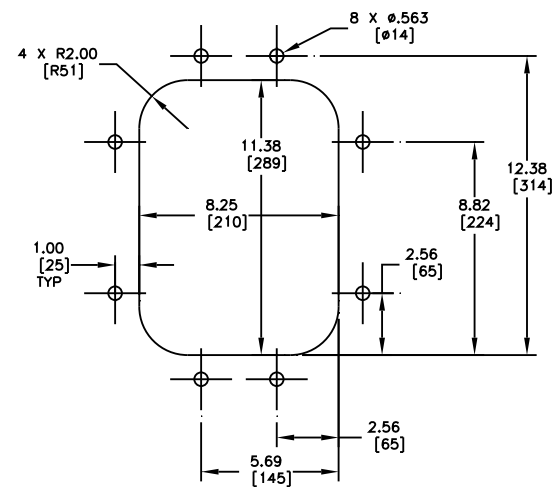


PART NUMBER	BELT WIDTH	DIMENSION "A" BLADE COVERAGE	DIMENSION "B" FRAME LENGTH
39424-181X12XXX	18.00 [400-500]	12.00 [305]	44.00 [1119]
39424-181X16XXX	18.00 [400-500]	16.00 [406]	44.00 [1119]
39424-241X18XXX	24.00 [500-650]	18.00 [457]	50.00 [1270]
39424-241X22XXX	24.00 [500-650]	22.00 [559]	50.00 [1270]
39424-301X24XXX	30.00 [650-800]	24.00 [610]	62.00 [1575]
39424-301X28XXX	30.00 [650-800]	28.00 [711]	62.00 [1575]
39424-361X30XXX	36.00 [800-1000]	30.00 [762]	68.00 [1727]
39424-361X34XXX	36.00 [800-1000]	34.00 [864]	68.00 [1727]
39424-421X36XXX	42.00 [1000-1200]	36.00 [914]	74.00 [1880]
39424-421X40XXX	42.00 [1000-1200]	40.00 [1016]	74.00 [1880]
39424-481X42XXX	48.00 [1200-1400]	42.00 [1067]	80.00 [2032]
39424-481X46XXX	48.00 [1200-1400]	46.00 [1168]	80.00 [2032]
39424-541X48XXX	54.00 [1400-1600]	48.00 [1219]	86.00 [2184]
39424-541X52XXX	54.00 [1400-1600]	52.00 [1321]	86.00 [2184]
39424-601X54XXX	60.00 [1600-1800]	54.00 [1372]	98.00 [2489]
39424-601X58XXX	60.00 [1600-1800]	58.00 [1473]	98.00 [2489]
39424-661X60XXX	66.00 [1600-1800]	60.00 [1524]	104.00 [2642]
39424-661X64XXX	66.00 [1600-1800]	64.00 [1626]	104.00 [2642]
39424-721X66XXX	72.00 [1800-2000]	66.00 [1676]	110.00 [2794]
39424-721X70XXX	72.00 [1800-2000]	70.00 [1778]	110.00 [2794]

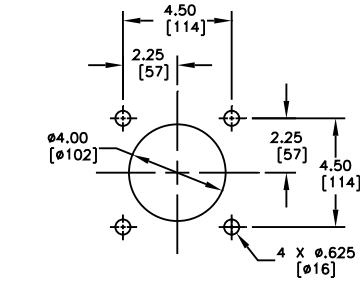
ASSEMBLY PART NO.	COLOR
39424-XX1XXXBRX	BROWN
39424-XX1XXXCLX	TAN
39424-XX1XXXGRX	GREEN
39424-XX1XXXNBX	NAVY BLUE
39424-XX1XXXORX	ORANGE

- NOTES:
- 1) ALL DIMENSIONS ARE GIVEN IN INCHES [MM] AND ARE FOR REFERENCE ONLY.
 - 2) IN THE 39424-XX1XXXXX PART NUMBER THE FIRST TWO XX'S INDICATE THE BELT WIDTH. THE "1" INDICATES A BLADE WITHOUT SLITS. SLITS ARE NOT AVAILABLE ON THIS BLADE ASSEMBLY. THE THIRD X INDICATES A SOLID (1) OR SEGMENTED (0) BLADE. THE NEXT TWO XX'S INDICATE THE BLADE COLOR/MATERIAL (SEE BLADE COLOR CHART), THE LAST X INDICATES IF A TENSIONER IS INCLUDED.
- EXAMPLES:
 39424-3611300RT = 36" BELT WIDTH, 30" BLADE W/O SLITS AND SEGMENTS, WITH A TENSIONER.
 39424-3611240R = 36" BELT WIDTH, 24" BLADE W/O SLITS AND SEGMENTS, WITHOUT A TENSIONER.
- 3) THE FRAME IS ADJUSTABLE TO DESIRED LENGTH.
 - 4) FOR BELT WIDTHS 54.00 [1372] AND OVER, MARTIN ENGINEERING RECOMMENDS USING A DUAL TWIST TENSIONER ASSEMBLY (P/N 38850-2).
 - 5) WHERE EXTREME OR UNUSUAL CONDITIONS EXIST, OR SPECIAL MAINFRAME LENGTHS ARE REQUIRED CONTACT MARTIN ENGINEERING.
 - 6) TWIST TENSIONER MAY BE BOLTED OR WELDED IN PLACE. MARTIN ENGINEERING RECOMMENDS BOLTING WHEN APPLICABLE FOR EASIER MAINTENANCE AND ACCESSIBILITY. IF WELDING IS REQUIRED USE TWIST TENSIONER P/N 38850-A. REFER TO OPERATOR'S MANUALS M3837 AND M4052 FOR INSTALLATION INSTRUCTIONS.
 - 8) CLEANER CAN BE LOCATED ANYWHERE ALONG THE ARC, AS LONG AS THE MAINFRAME IS OUT OF MATERIAL TRAJECTORY AND THE BLADE TIPS ARE BELOW THE HORIZONTAL CENTERLINE OF THE HEAD PULLEY.
 - 9) FOR SEVERE APPLICATIONS WELD MAINFRAME ADAPTER DIRECTLY TO MAINFRAME.
 - 10) THE PV QB1 PRE-CLEANER BLADE IS DESIGNED TO REMOVE THE INITIAL CARRYBACK ONLY. DO NOT OVERTENSION.
 - 11) THE PV QB1 PRE-CLEANER BLADE IS DESIGNED FOR HEAD PULLEYS WITH A MINIMUM EFFECTIVE DIAMETER OF 12.00 [305] TO A MAXIMUM OF 16.00 [406].
 - 12) BLADE COVERAGE IS LESS THAN BELT WIDTH, DUE TO POSSIBLE MISTRACKING OR DAMAGED EDGES OF THE BELT.

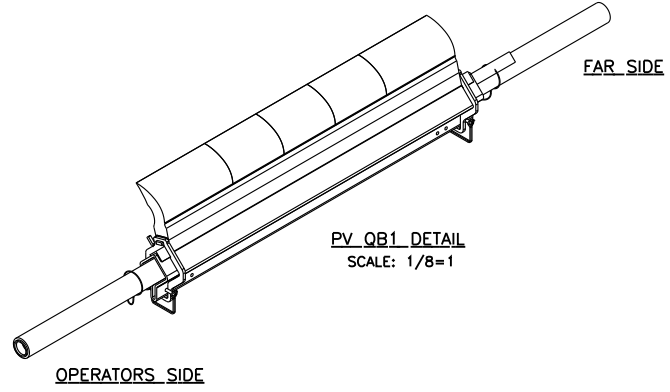
ITEM	QTY.	DESCRIPTION	PART NUMBER
1	1	MARTIN® PV QB1 BLADE MAINFRAME ASM	39424-XX1XXXXX
2	1	MARTIN® TWIST™ TENSIONER ASM	SEE CHART
3	1	MARTIN® LOW PROFILE STL DOOR 9X12	CYA-0912



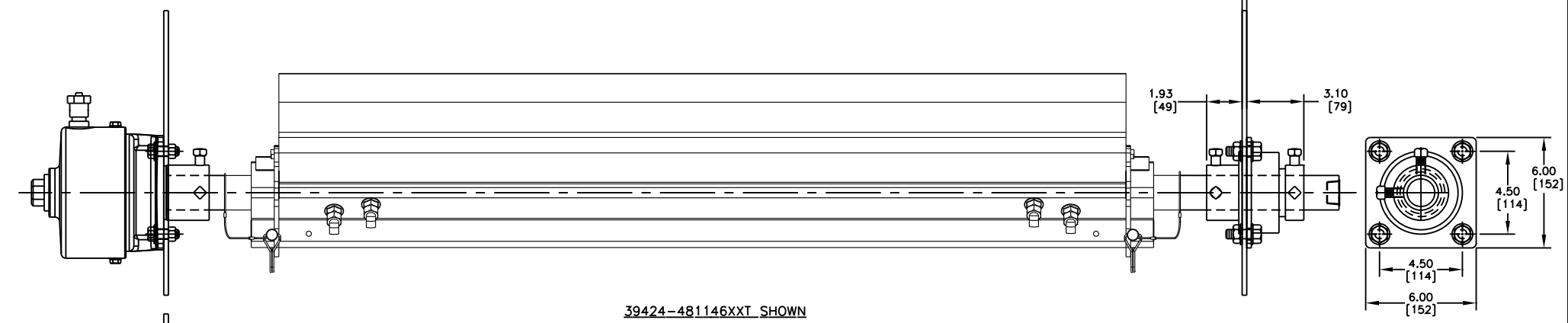
DOOR CUTOUT DETAIL
FOR STEEL ACCESS DOOR



TENSIONER CHUTE WALL CUTOUT DETAIL
TYPICAL BOTH SIDES

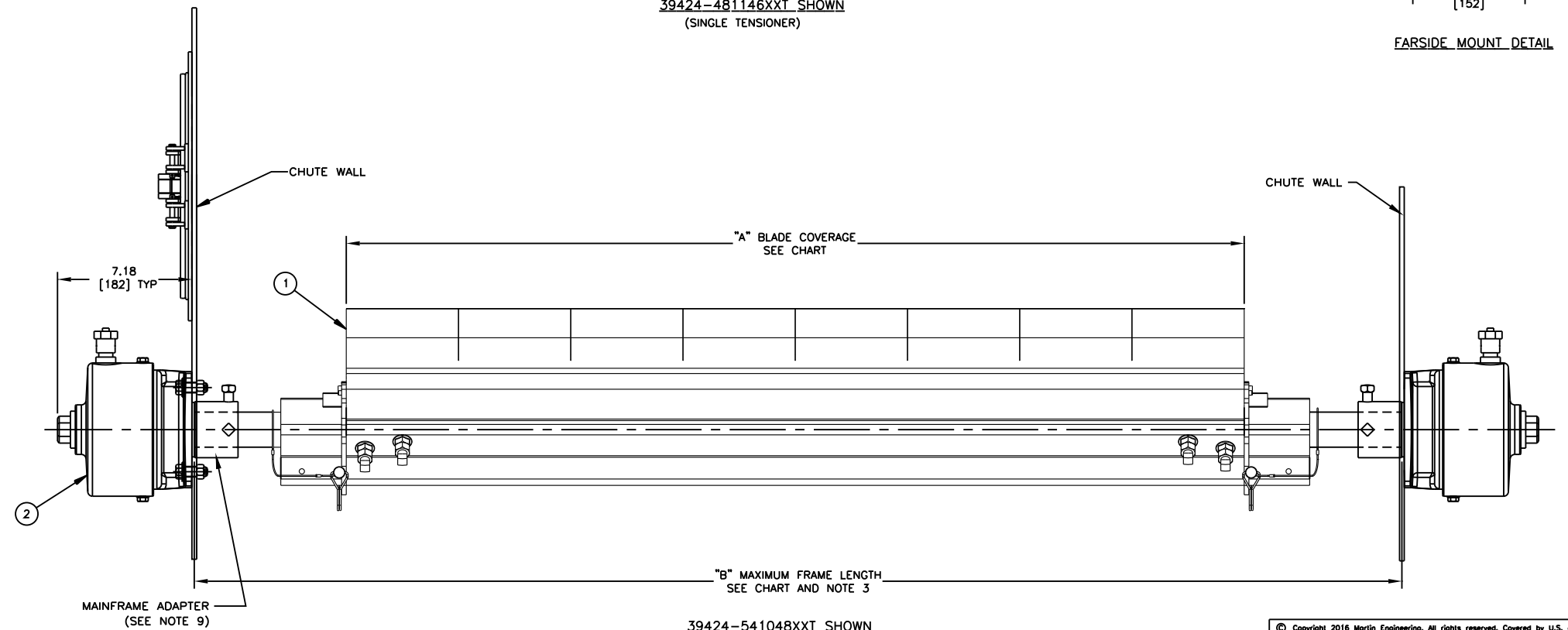
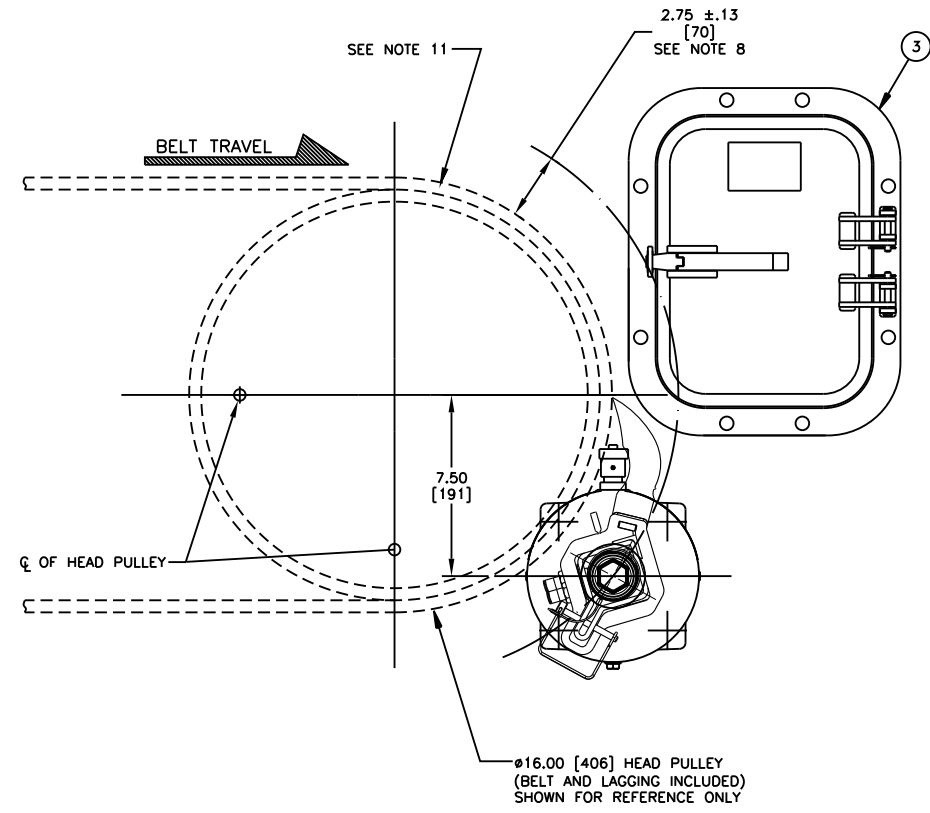


PV QB1 DETAIL
SCALE: 1/8=1



39424-481146XXT SHOWN
(SINGLE TENSIONER)

FAR SIDE MOUNT DETAIL



39424-541048XXT SHOWN
(DUAL TENSIONER)
HEAD PULLEY NOT SHOWN FOR CLARITY

© Copyright 2016 Martin Engineering. All rights reserved. Covered by U.S. and foreign patents pending and issued. ® and TM indicate trademarks of Martin Engineering.

		MARTIN ENGINEERING NEPONSET, IL USA	
TITLE	MARTIN PV QB1 ASM W/TWIST TENSIONER ASM & 9 X 12 STEEL DOOR	DRAWN RND	DATE 04/06/16
NO.	DESCRIPTION	ECN	DATE
AutoCAD	REVISION		
SALES DRAWING		APPROVED	
PR15194		DATE	
S50093-PVQB1		SCALE 1/4	

