

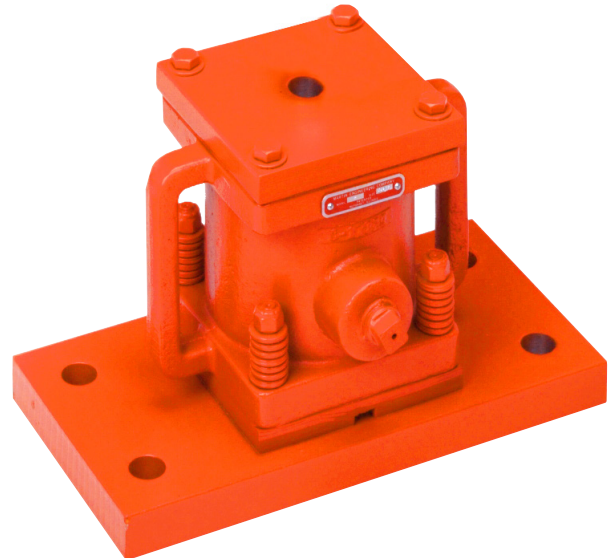
Martin® Thumper™ Series Timed Impactor

The **Martin® Thumper™ Series Timed Impactor** delivers power impactive blows through effective use of air power—producing a sledgehammer effect with minimal noise and hopper damage.

Heavy workloads are handled easily even where an air supply is limited. Well-suited for applications where flow rates are low or where a sledgehammer has proven successful.

These versatile units can be furnished with permanent mount or with quick-release adapter to facilitate easy movement from one location to another. Impactor units deliver controlled blows at a choice of intervals.

Best uses: sticky, clinging materials that adhere to chutes, hoppers and bins.



PERFORMANCE DATA

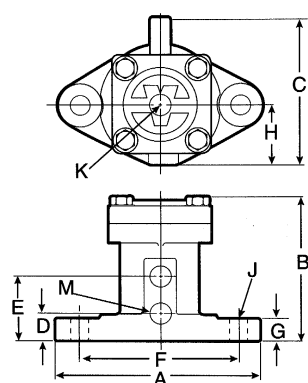
Model	Part Number	80 psi (5.51 bar) (1 stroke)						Max. Weight in Sloped Section of Bin lb (kg)	
		Force Output lb (kg)	Air Consumption (Cu. Ft.)						
			20 psi	40 psi	60 psi	80 psi			
T-125	21685	142 (64)	.002	.003	.004	.005	20,000	(9072)	
T-200	21682	376 (171)	.007	.011	.015	.019	30,000	(13,608)	
T-250	19078	571 (259)	.012	.018	.025	.032	40,000	(18,144)	
T-300	21572	835 (379)	.024	.030	.030	.050	60,000	(27,216)	
T-400	17589	1400 (635)	.062	.083	.103	.114	100,000	(45,360)	

NOTE: Air consumption per impact. Martin® Thumper™ Series Timed Impactors may be operated in temperatures -40° to 250°F (-40° to 120°C).

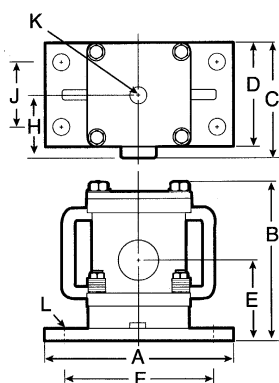
TECHNICAL DATA SHEET

DIMENSIONS—in. (mm)

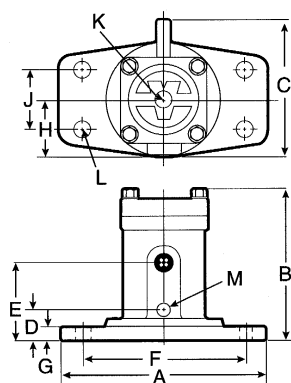
Model	A	B	C	D	E	F	G	H	J	Inlet NPT	L	Exhaust NPT
T-125	5.75 [146]	4.00 [101]	4.19 [106]	0.84 [21]	1.84 [47]	4.5 [114]	0.62 [16]	1.69 [43]	0.50 [13]	1/4	—	1/4
T-200	8.87 [225]	6.00 [152]	5.75 [146]	1.56 [40]	2.76 [70]	7.5 [190]	0.75 [19]	2.47 [63]	0.62 [16]	1/2	—	1/4
T-250	11.62 [290]	7.25 [184]	6.19 [157]	6.00 [152]	3.75 [95]	9.5 [241]	1.00 [25]	3.19 [81]	3.50 [89]	1/2	0.75 [19]	—
T-300	12.00 [305]	8.62 [219]	7.69 [195]	1.75 [44]	4.00 [102]	9.5 [241]	0.75 [19]	3.25 [83]	3.50 [89]	3/4	0.75 [19]	1/2
T-400	12.00 [305]	11.88 [301]	7.38 [187]	6.00 [152]	4.25 [108]	10.0 [254]	2.50 [63]	4.40 [112]	4.00 [102]	3/4	—	3/4



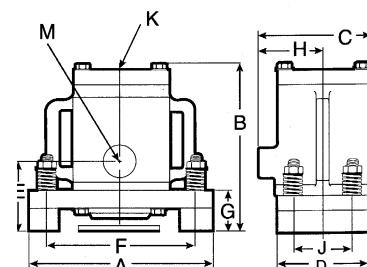
T-125, T-200



T-250



T-300



T-400

ACCESSORIES

Part Number	Description
See Chart	Channel Mount
	Mounting Kit
32271	Safety Cable Assembly
39504	Control Line Kit
14824-PR	Ball Valve 1/2" NPT
14760-PR	Filter, Regulator, Lubricator Combination, 1/2" NPT
14766-PR	Air Motor Oil (qt)
38902	Pneumatic Controller/Timer - Single Circuit
38901	Pneumatic Controller/Timer - Multiple Circuit
36343-NC	Solenoid Valve 115/1/60, 1/2" NPT

Model	Channel Mount	Mounting Kit
T-125	29928-01	29810
T-200	29928-02	29811
T-250	29928-05	29812
T-300	29928-05	29812
T-400	N/A	N/A



Martin Engineering USA

3600 Cougar Drive
Peru, IL 61354 USA
855 394 4885
Fax 800 814 1553
www.martin-eng.com

COMPANY WITH
QUALITY SYSTEM
CERTIFIED BY DNV GL
= ISO 9001 =

Problem Solved™ GUARANTEED!

Form No. L2733-02-07/20
© Martin Engineering Company 1998, 2020