



Martin® DT2 HD Cleaner is the heavy duty version of Secondary cleaner featuring split-track blade cartridge that allows the blades to be easily slide in and out. This Cleaner comes with auto-tensioning.

FEATURES & BENEFITS

- Slide-in/slide-out blade cartridge allows quick and easy blade service that minimizes conveyor downtime. Even when the cleaner is encrusted with material, one-half of the split frame can be removed to allow blade change.
- Blades are made of moulded PU with TC tipped steel backing plate.
- Automatic Tensioner provided for more efficient cleaning and easy maintenance.

SPECIFICATIONS

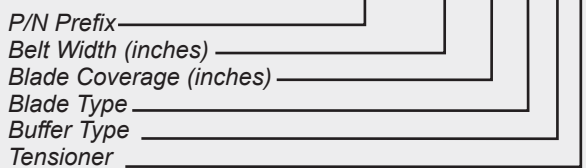
Belt Width	Belt Speed	Max. Service Temperature	Compatible with Reversing Belts
up to 2400 mm	up to 6.1 m/s	up to 70°C	Yes

Note: For any queries contact your Martin Engineering representative

NOMENCLATURE

FULL ASSEMBLY

DT2S - XX XX X X X



Blade Type

- C:** Tungsten Carbide Reversing Blade MS backing plate
- S:** Tungsten Carbide Reversing Blade SS backing plate

Buffer Type

- U:** Urethane Suitable for Ambient conditions

Tensioner Type

- P:** Spring Tensioner
- B:** Manual Tensioner

SPARE BLADE

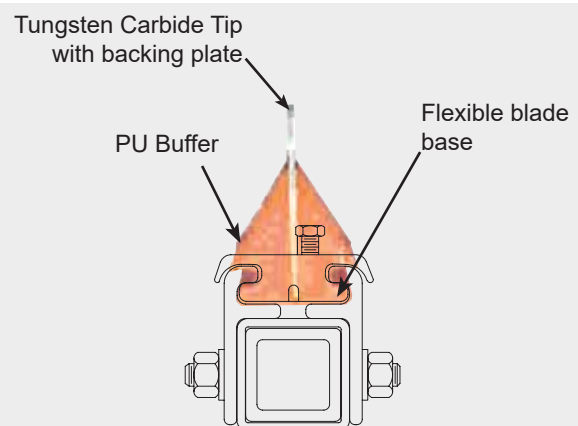
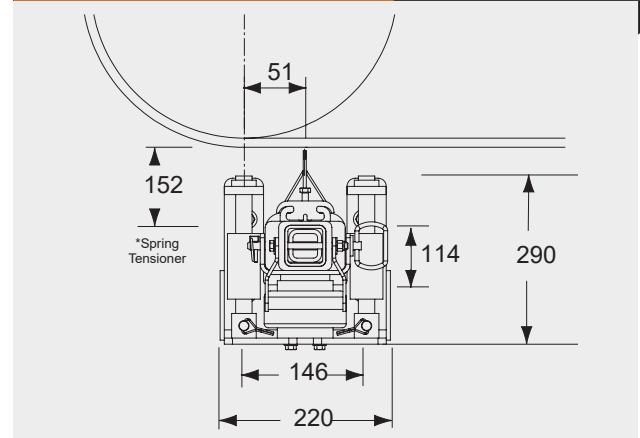
31104 - X



Blade Type

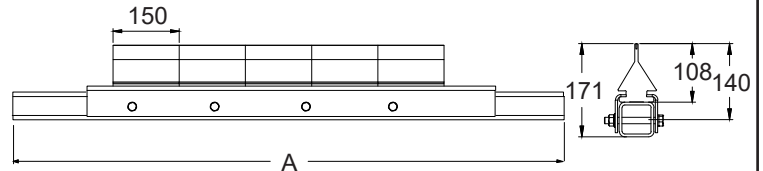
- C:** Tungsten Carbide Reversing Blade MS backing plate
- S:** Tungsten Carbide Reversing Blade SS backing plate

MOUNTING LOCATION



DIMENSIONS

Belt Width	Mainframe Length mm	Blade Coverage mm (in.)
450 (18)	1500	300 (12)
600 (24)	1650	450 (18)
750 (30)	1800	600 (24)
800 (36)	1950	750 (30)
1000 (42)	2100	900 (36)
1200 (48)	2250	1050 (42)
1400 (54)	2400	1200 (48)
1600 (60)	2750	1350 (54)
1800 (72)	3050	1650 (66)
2000 (78)	3280	1800 (72)
2200 (90)	3500	2100 (84)
2400 (96)	3650	2250 (90)



OTHER BELT CLEANERS RANGE AVAILABLE

Belt Cleaner	Belt Width (mm)	Max. Belt Speed (mm)
SQC2S™ Mini	400-1800	2.5
DT2 Standard Duty	400-2400	4.6