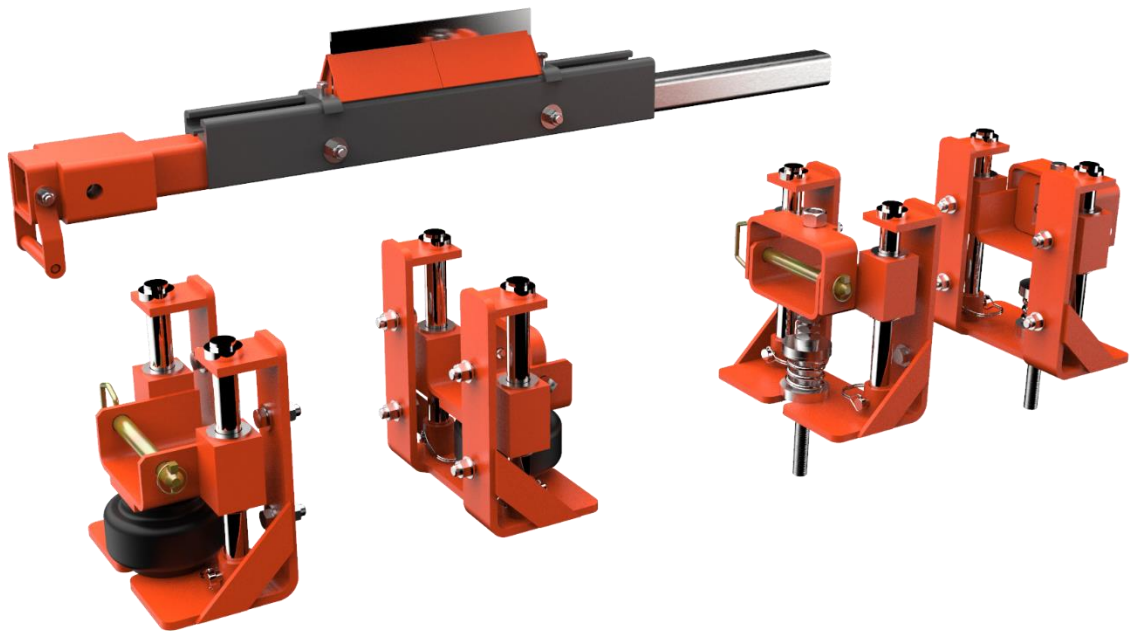


DT2S Secondary Cleaner



Operating Instructions Part 2

Version: 0
Language: ENG
M3687EUK-01/21

Table of Contents

1	General	2
1.1	About these operating instructions	2
1.2	Accompanying Documents	2
1.3	Part number	3
1.4	Technical Data	3
2	Installation	4
2.1	Determining the installation position	4
2.2	Mounting the tensioner	5
2.3	Adjust spring tensioner 37707-...+E	6
2.4	Adjust air tensioner 37707-A...+E	7
2.5	Placing labels	8
2.6	Removing Blades	9
3	Scope of delivery and spare parts	10
3.1	Secondary cleaner	10
3.2	Tensioner	11

1 General



NOTE

Before starting work on the cleaner or the conveyor, part 1 and 2 of these operating instructions must be read and understood completely

1.1 About these operating instructions

These operating instructions apply solely for cleaners and are intended for those persons who install cleaners, commission them, and monitor their usage.

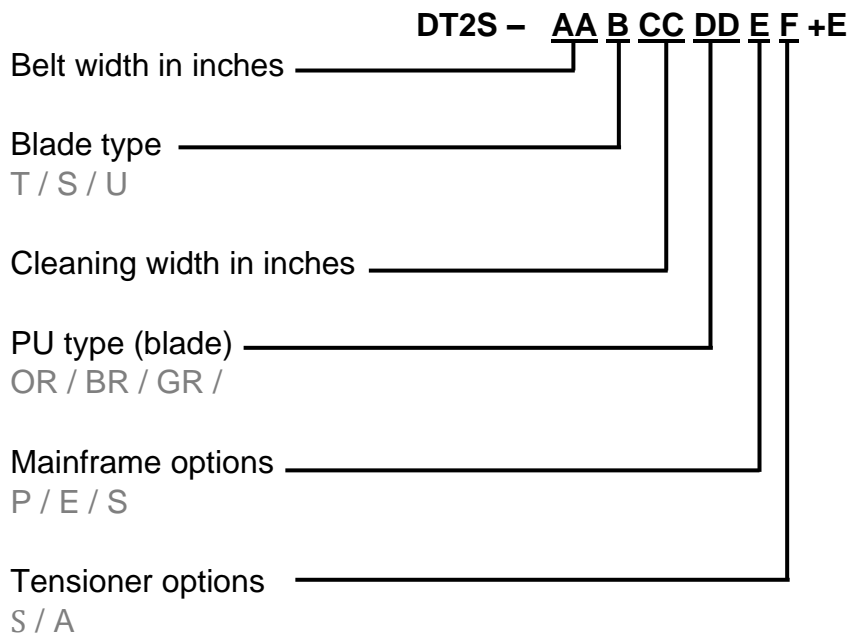
The operating instructions must be kept for the lifetime of the cleaners and must be made available in an orderly condition to all persons entrusted with work with and on the cleaners.

1.2 Accompanying Documents

Part 1 of the operating instructions, which is provided separately, is an integral part of these operating instructions.

1.3 Part number

Cleaner



Tensioner

- Inline-Reversing (Spring) Tensioner: 37707-...+E
- Air Tensioner: 37707-A...+E

1.4 Technical Data

The cleaner is suitable for the following operating parameters:

	Operating parameter
Belt widths:	500 – 3.000 mm
Belt speed:	Max. 4,3 m/s
Temperature range:	-40 - +150 °C depending on PU type
Reversing operation:	Possible

2 Installation



NOTE

For a general description of cleaner installation, refer to Part 1 of the operator's manual.



NOTE

The Spring Tensioner can be used in the bottom mount (standard) position or the top mount position.

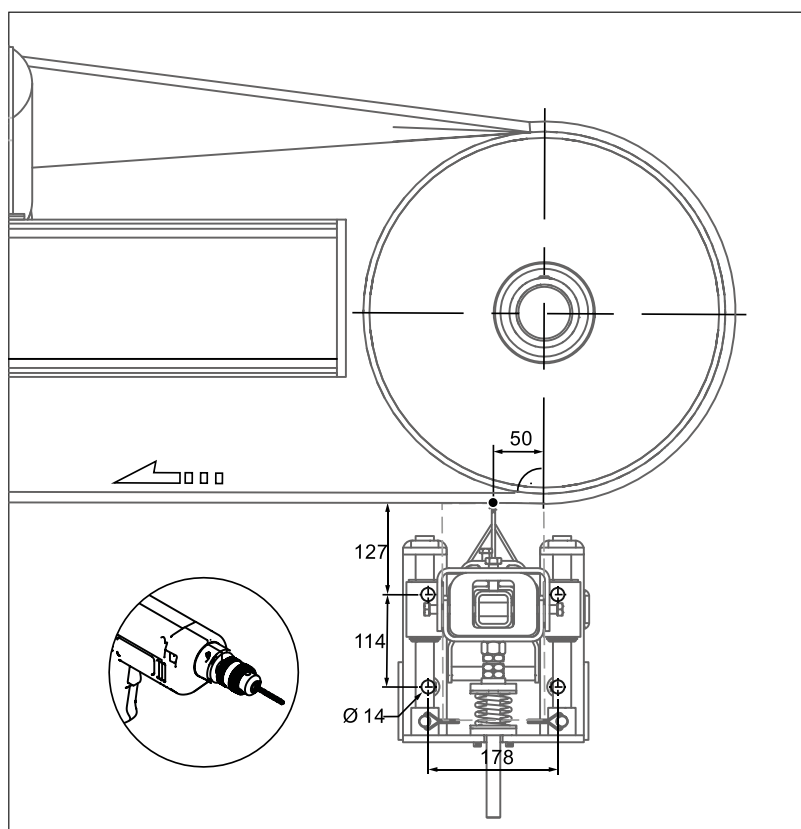
Bottom mount position: the spring acts as a compression spring

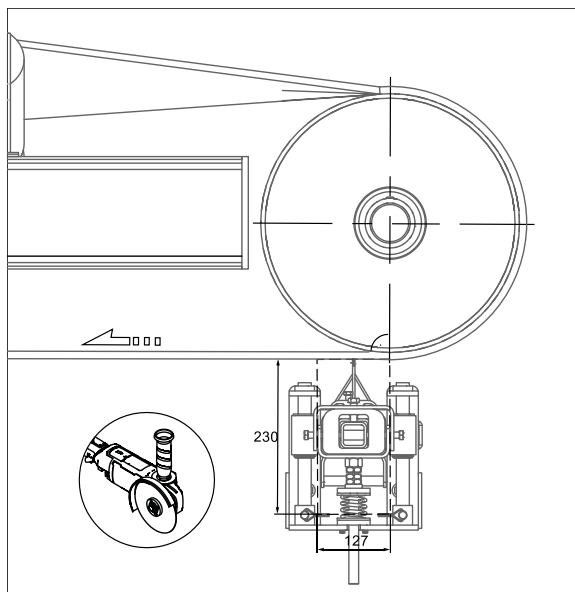
Top mount position: the spring acts as a tension spring

The Spring Tensioner must be modified if the top mount variant is to be used. To do this, the Spring Tensioner must be partially disassembled and the spring converted.

For more details please refer to the drawing at the end of these instructions.

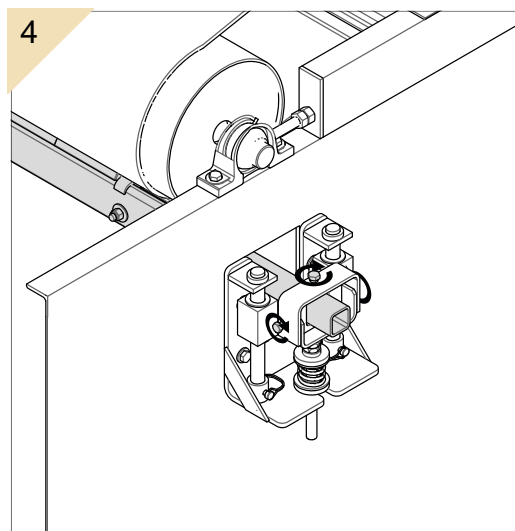
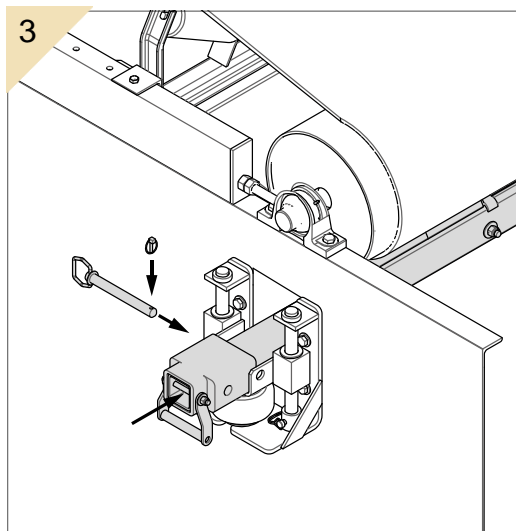
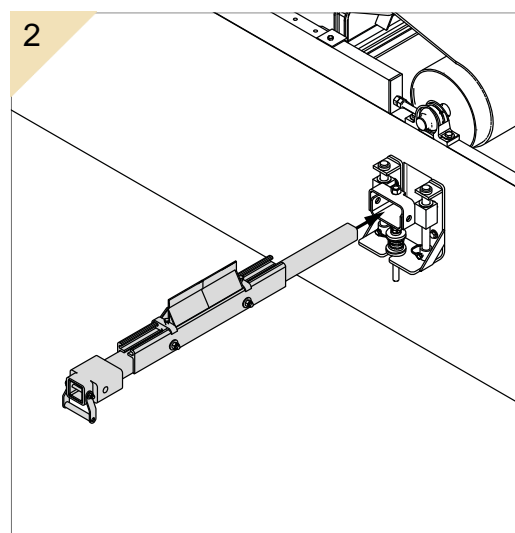
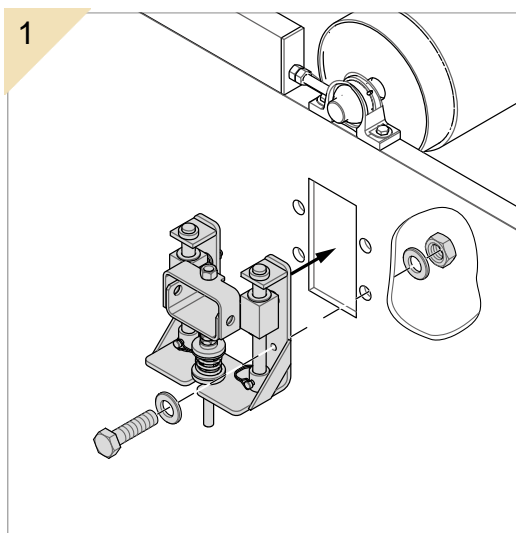
2.1 Determining the installation position



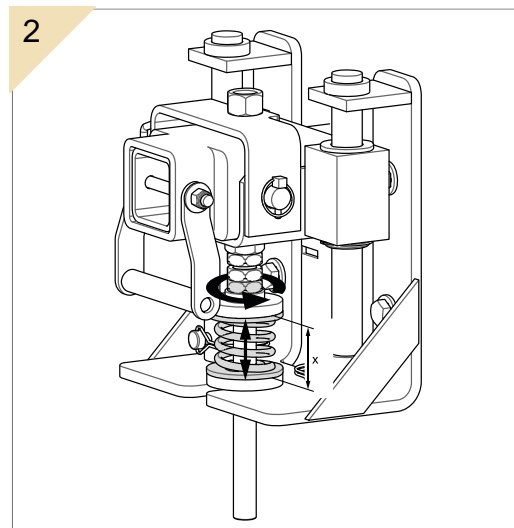
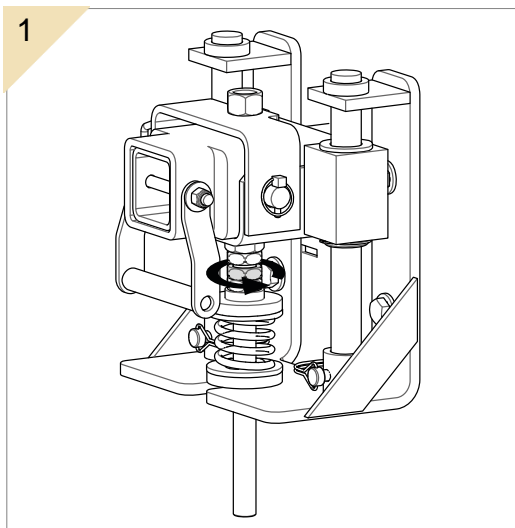


Cut out in the chute wall for mounting and servicing the belt cleaner
(Minimum dimensions)

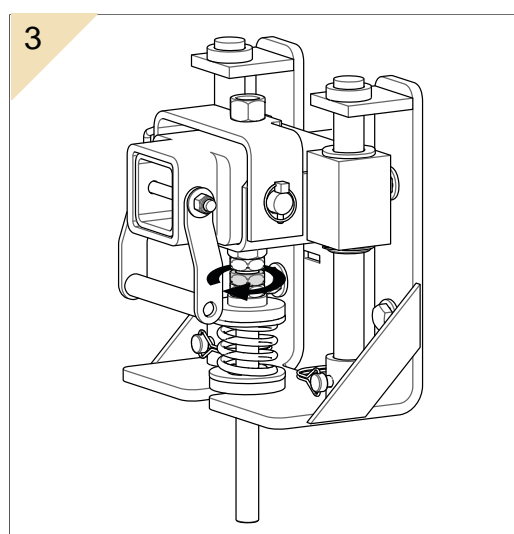
2.2 Mounting the tensioner



2.3 Adjust spring tensioner 37707-...+E



Belt width		Top Mount	Bottom Mount
in	mm		
18	500	57	38
24	650	57	38
30	800	54	35
36	1000	54	35
42	1200	54	35
48	1400	51	32
54	1600	51	32
60	1800	51	32
72	2000	48	48
84	2200	48	48
96	2400	44	44
102	2600	44	44
110	2800	44	44



In mm Spring length (distance between washers)

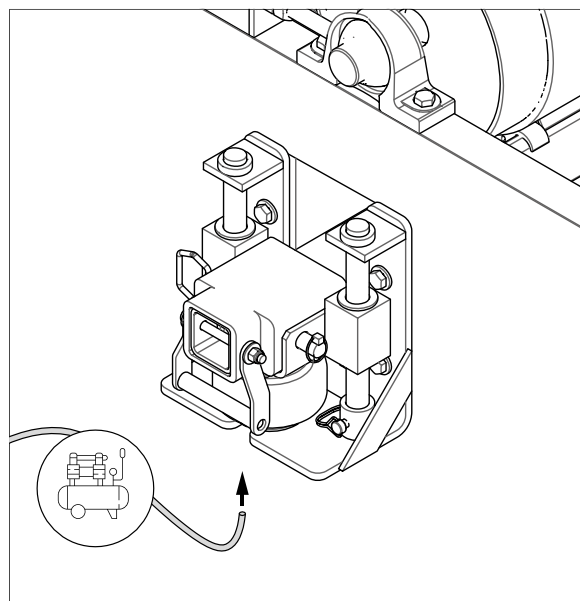
2.4 Adjust air tensioner 37707-A...+E



NOTE

The compressed air system is provided by the customer and is not part of the scope of delivery.

Belt width		Compressed air pressure in bar
in	mm	
18	500	0,34
24	650	0,41
30	800	0,55
36	1000	0,69
42	1200	0,76
48	1400	0,90
54	1600	0,97
60	1800	1,03
72	2000	1,24
84	2200	1,45
96	2400	1,59
102	2600	1,65
110	2800	1,72



2.5 Placing labels

2.5.1 Safety label

The safety label below must be attached to the conveyor system in the immediate vicinity of the cleaner:

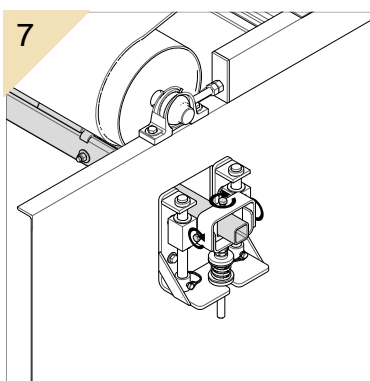
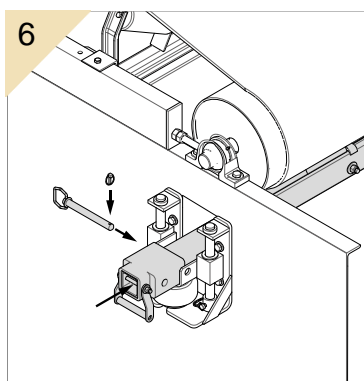
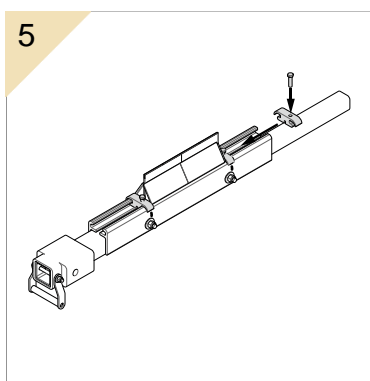
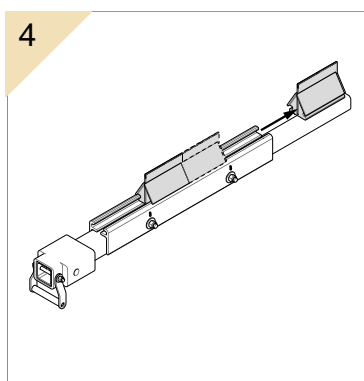
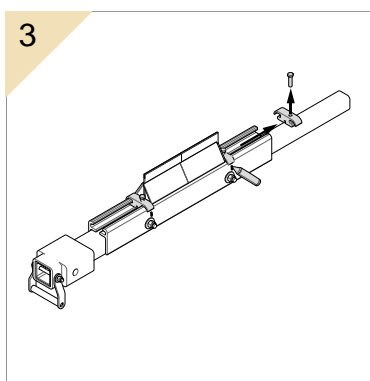
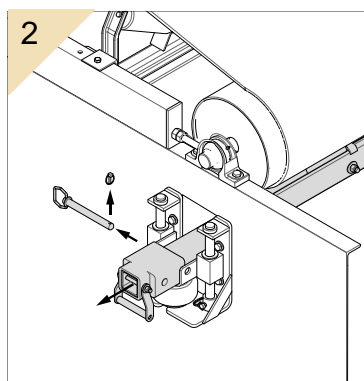
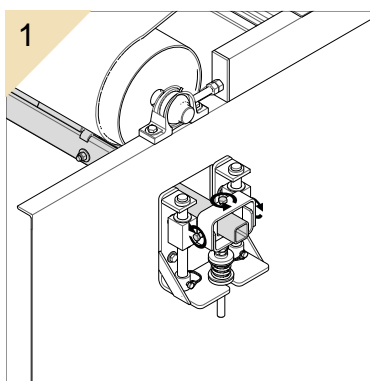


2.5.2 Other labels

The labels below are attached to the product:

1. Sticker showing the address of the Martin Engineering branch and the designation of the product
2. A sticker containing the tension values for the respective tensioner

2.6 Removing Blades



3 Scope of delivery and spare parts

3.1 Secondary cleaner

Part number / Teilenummer	DM	Material / Rohmaterial	Qty. / Anz.	Description / Beschreibung	PN / Teile-Nr.
D12S-10L2XXXXX4E	305	CL	1	D12S Cartridge with blades / D12S Kartusche ohne Abstreifblätter C / s.t.	
D12S-10L18XXXXX4E	686	918	1	D12S Cartridge with blades / D12S Kartusche ohne Abstreifblätter C / s.t.	
D12S-24M18XXXXX4E	457	800	1	D12S Cartridge with blades / D12S Kartusche ohne Abstreifblätter C / s.t.	
D12S-30M20XXXXX4E	457	800	1	D12S Cartridge with blades / D12S Kartusche ohne Abstreifblätter C / s.t.	
D12S-30M20XXXXX4E	610	800	1	D12S Cartridge with blades / D12S Kartusche ohne Abstreifblätter C / s.t.	
D12S-30M20XXXXX4E	752	800	1	D12S Cartridge with blades / D12S Kartusche ohne Abstreifblätter C / s.t.	
D12S-42M20XXXXX4E	914	1166	1	D12S Cartridge with blades / D12S Kartusche ohne Abstreifblätter C / s.t.	
D12S-42M20XXXXX4E	1007	1236	1	D12S Cartridge with blades / D12S Kartusche ohne Abstreifblätter C / s.t.	
D12S-48M20XXXXX4E	1210	1446	1	D12S Cartridge with blades / D12S Kartusche ohne Abstreifblätter C / s.t.	
D12S-54M20XXXXX4E	1210	1600	1	D12S Cartridge with blades / D12S Kartusche ohne Abstreifblätter C / s.t.	
D12S-60M20XXXXX4E	1525	1730	1	D12S Cartridge with blades / D12S Kartusche ohne Abstreifblätter C / s.t.	
D12S-60M20XXXXX4E	1670	1905	1	D12S Cartridge with blades / D12S Kartusche ohne Abstreifblätter C / s.t.	
D12S-72M20XXXXX4E	1650	2090	1	D12S Cartridge with blades / D12S Kartusche ohne Abstreifblätter C / s.t.	
D12S-84M20XXXXX4E	1901	2390	1	D12S Cartridge with blades / D12S Kartusche ohne Abstreifblätter C / s.t.	
D12S-96M20XXXXX4E	1970	2590	1	D12S Cartridge with blades / D12S Kartusche ohne Abstreifblätter C / s.t.	
D12S-108M20XXXXX4E	2090	2790	1	D12S Cartridge with blades / D12S Kartusche ohne Abstreifblätter C / s.t.	
D12S-120M20XXXXX4E	2090	2990	1	D12S Cartridge with blades / D12S Kartusche ohne Abstreifblätter C / s.t.	

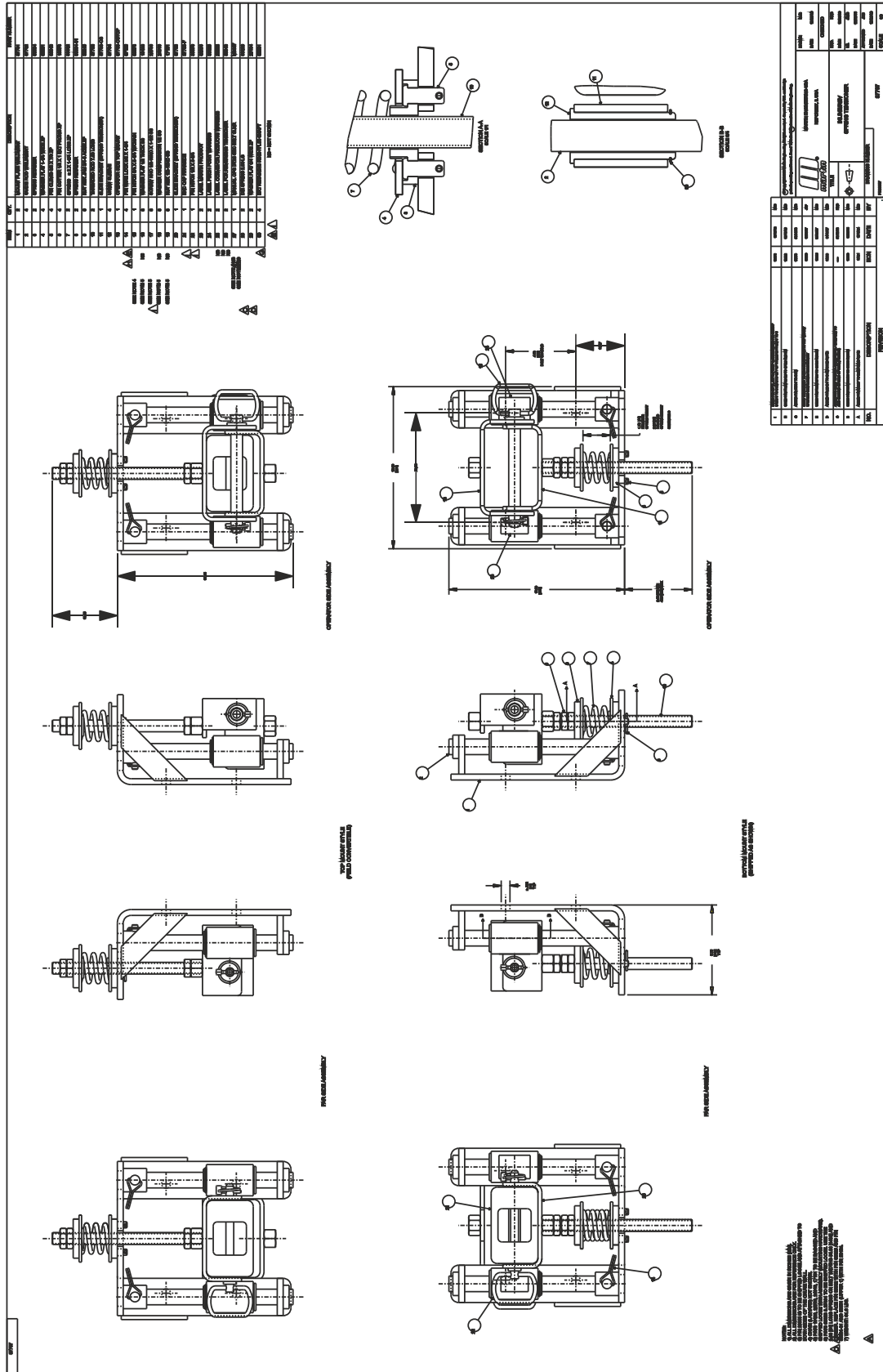
Part number / Teilenummer	DM	Material / Rohmaterial	Qty. / Anz.	Description / Beschreibung	PN / Teile-Nr.
D12S-180XXXXX4E	152	18	3	Blade type / Blatttyp	
D12S-24M18XXXXX4E	152	18	3	Blade type / Blatttyp	
D12S-30M20XXXXX4E	152	18	3	Blade type / Blatttyp	
D12S-42M20XXXXX4E	152	18	3	Blade type / Blatttyp	
D12S-48M20XXXXX4E	152	18	3	Blade type / Blatttyp	
D12S-54M20XXXXX4E	152	18	3	Blade type / Blatttyp	
D12S-60M20XXXXX4E	152	18	3	Blade type / Blatttyp	
D12S-72M20XXXXX4E	152	18	3	Blade type / Blatttyp	
D12S-84M20XXXXX4E	152	18	3	Blade type / Blatttyp	
D12S-96M20XXXXX4E	152	18	3	Blade type / Blatttyp	
D12S-108M20XXXXX4E	152	18	3	Blade type / Blatttyp	
D12S-120M20XXXXX4E	152	18	3	Blade type / Blatttyp	

Part number / Teilenummer	DM	Material / Rohmaterial	Qty. / Anz.	Description / Beschreibung	PN / Teile-Nr.
D12S-300XXXXX4E	4	3707A	4	Reversing IC	
D12S-300XXXXX4E	4	3707B	4	Reversing SS	
D12S-300XXXXX4E	4	3707C	4	Reversing Urethane	
D12S-300XXXXX4E	4	3707D	4	Reversing Urethane	

Reversing (Option T, S, U) with air tensioner / mit Luftspannvorrichtung

Part number / Teilenummer	DM	Material / Rohmaterial	Qty. / Anz.	Description / Beschreibung	PN / Teile-Nr.
D12S-suborder-E				Feederhead in Zoll	
a				Beit width in inch	
b				Reversing blade WTC insert	
T				Reversing blade with Hermetall	
S				Reversing blade - Stainless steel	
U				Reversing blade - Urethane	
c				Reversing blade - Urethane	
d				Cleaning width in inch	
RR				Urethane color	
GR				Green (temperature resistant)	
OR				Orange	
e				Mainframe options	
P				Mid steel (L10307) - Painted (RAL 2004)	
E				Mid steel (L10307) - Powder - Painted (RAL 2004)	
S				Mid steel (L10307) - Laser-cut - Painted (RAL 2004)	
f				Tensioner options	
S				Spring tensioner	
A				Air tensioner	

3.2 Tensioner





Germany

Martin Engineering GmbH
In der Rehbach 14, 65396 Walluf, Germany
Tel. +49 (0)6123 97820; Fax +49 (0)6123 75533
info@martin-eng.de; www.martin-eng.de

Spain

Martin Engineering Spain
c/Balmes 297 1er 2a, 08006 Barcelona, Spain
Tel. +34 (0)876 245114; Fax +34 (0)966 719371
info@martin-eng.es; www.martin-eng.es

Great Britain

Martin Engineering Ltd.
8, Experian Way, NG2 Business Park,
Nottingham NG2 1EP, Nottinghamshire, Great Britain
Tel +44 115 946 4746; Fax +44 115 946 5550
info@martin-eng.co.uk; www.martin-eng.co.uk

Turkey

Martin Engineering Türkiye
Yukarı Dudullu İmes Sanayi Sitesi, B Blok 205 Sokak No.6
34775 Ümraniye İstanbul, Turkey
Tel +90 216 499 34 91; Fax +90 216 499 34 90
info@martin-eng.com.tr; www.martin-eng.com.tr

France

Martin Engineering SARL
50 Avenue d'Alsace, 68025 Colmar Cedex, France
Tel +33 389 20 63204; Fax +33 389 20 4379
info@martin-eng.fr; www.martin-eng.fr

Italy

Martin Engineering Italy Srl
Via Buonarroti, 43/A, 20064 Gorgonzola (MI), Italy
Tel +39 295 3838 51; Fax +39 295 3838 15
info@martin-eng.it; www.martin-eng.it

Russia

OOO Martin Engineering
Ul. Bolshaya Dmitrovka, 23/1
125009 Moscow, Russia
Tel +7 495 181 33 43; Fax +7 499 720 62 12
info@martin-eng.ru; www.martin-eng.ru