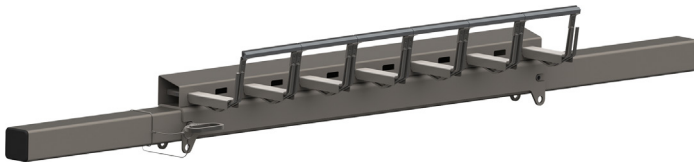


# CleanScape® Secondary Cleaner

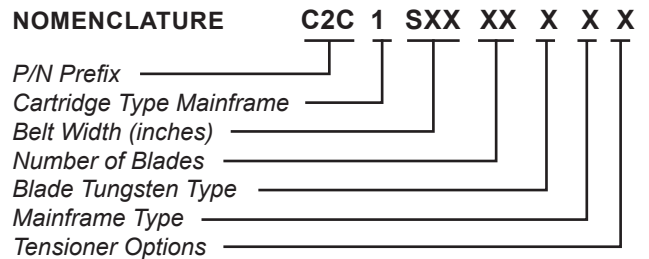


The **CleanScape® Secondary Cleaner** is an all stainless steel assembly featuring independent 6 inch wide blades with carbide tips. Each blade tip is supported on spring loaded arms at both ends. The load springs allow independent blade rotation back and forward as well as up and down. This “range-of-motion” provides equal load pressure across each blade, absorbs obstructions, conforms to ever-changing belt undulations, and is able to arc safely in the event of reversing belt direction or belt roll back.

### FEATURES & BENEFITS

- Optimum cleaning results
- “Free Flow” design allows for material to pass through arms
- Crowned Mainframe design compensates for belt wear in the center
- Low Blade-to-Belt pressure
- Simple installation inside or outside of chute
- Removed material returns to main flow
- Requires less tensioning over lifespan
- Handles reversing belts and belt rollback without damage to belt
- Easy cartridge removal
- Easy adjustment of cleaning pressure

### NOMENCLATURE



### BLADE TUNGSTEN

**TYPE 1:** Tungsten Carbide

### MAINFRAME TYPE

**S:** Stainless Steel  
**E:** Extended Length

### TENSIONER OPTIONS

**Blank:** No Tensioner  
**S:** Stainless Steel

### DOOR OPTIONS

**Blank:** No Door  
**D:** Mild Steel  
**S:** Stainless Steel

### SPECIFICATIONS

Cleaner Type	Belt Width in. (mm)	Maximum Belt Speed fpm (m/sec)	
		Vulcanized Splice	Mechanical Splice
C2C1SXXXXXXXX	18–96 (457–2438)	900 (5)	600 (3)



**Martin Engineering Germany**  
In der Rehbach 14  
65396 Walluf, Germany  
Ph.: 0049 (0)6123 9782 0  
Fax 0049 (0)6123 7 55 33  
info@martin-eng.eu | www.martin-eng.de

**Martin Engineering Ltd**  
8, Experian Way, NG2 Business Park  
Nottingham NG2 1EP Nottinghamshire, UK  
Ph.: 0044 (0)115 946 4746  
Fax 0044 (0)115 946 5550  
info@martin-eng.co.uk | www.martin-eng.co.uk



Subject to change without prior notice. Quality management system certified according to DNV - ISO 9001