

Upper unit

Lower unit

Painted designed shown

The conveyor-belt rollers shown are not a component of the Martin® Tracker™ belt tracking systems

Technical data

Max. belt speed	5.0 m/s*
Belt width	380 - 2150 mm*
Reversing operation	No
Design variations	painted (RAL 2004) or galvanised
Operating temperature	-20°C to +70°C

* Depending on the chosen design

Available in a wide range of technical designs

- **Mini**
For small loads up to a belt width of 560 mm.
- **Basic**
For all types of standard industrial applications.
- **Heavy-Duty**
For thicker conveyor belts with high speeds, tonnage and belt widths.
- **Monster**
For the harshest usage conditions.

Die Martin® Tracker™ belt tracking systems enable direct, continuous, and precise alignment of the belt line.

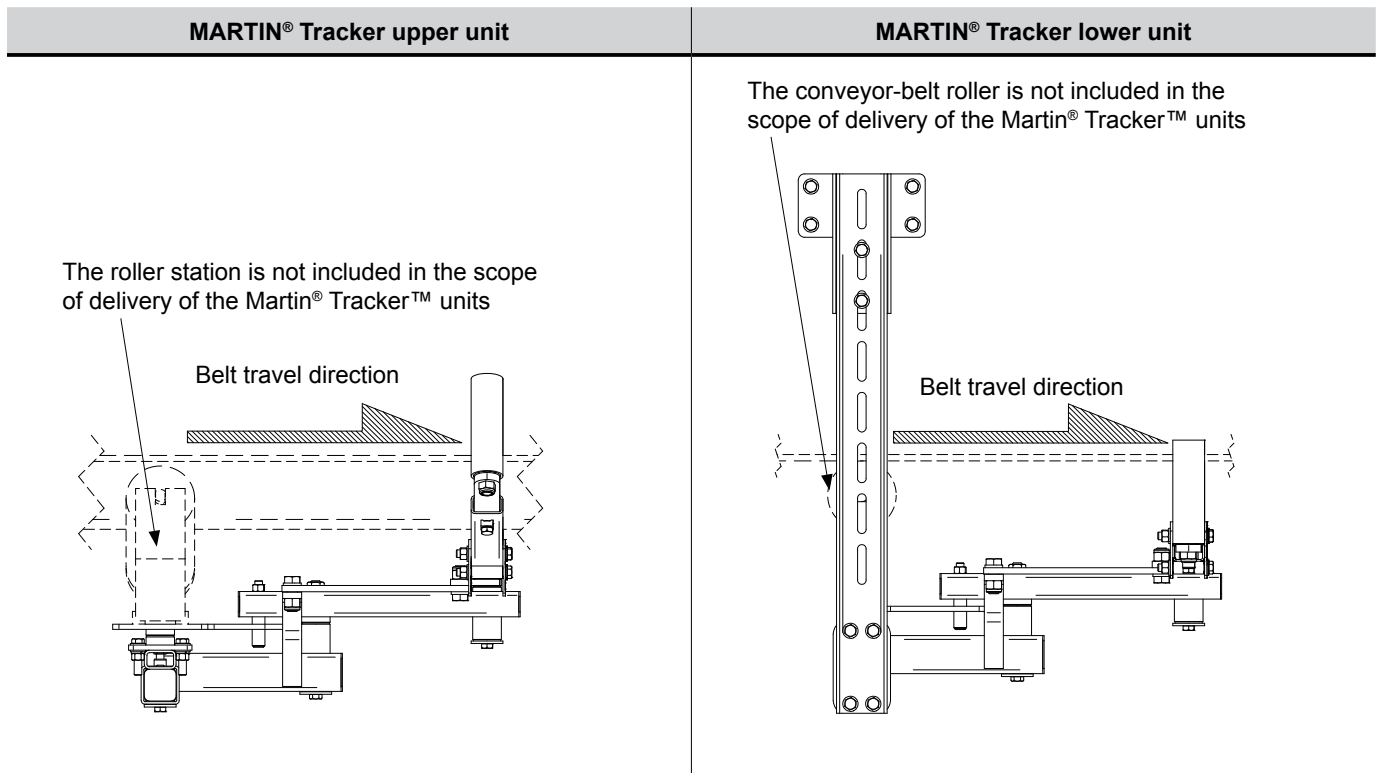
They effectively prevent material losses and unnecessary conveyor downtimes which can be caused by damage to the conveyor belt and its structure.

Features

- **Can be used universally**
The Martin® Tracker™ can be used on all roller-guided conveyor systems and in the carrying run and bottom belt conveyor up to a trough of 45°.
- **High Compatibility**
The telescoping capacity of the support structure, roller mount, and sensor arms makes it possible to adapt and use the Martin® Tracker™ units in a wide range of highly diverse conveyor-system designs.

Moreover, the open design eliminates the need for special rollers; the conveyor-belt rollers provided at the site can be used together with their stations. This is achieved by installing the roller station which was removed for this purpose on the mounting bracket of the Martin® Tracker™ units on the upper unit. The return idler removed for this purpose is installed in the roller mount provided on the lower unit.
- **Continuous alignment**
The guide rollers continuously record the belt alignment and react to the smallest deviations. These are transmitted directly to the guide roller by an adjusting rod. The conveyor belt is continuously monitored in this way and corrected as needed.
- **Maintenance-free**
No lubricating and/or maintenance work required. The moving parts of the Martin® Tracker™ units are equipped with maintenance-free bronze liners and the guide rollers with self-lubricating ball bearings.
- **Also for contoured conveyor belts**
In special cases and in consultation with Martin Engineering, the Martin® Tracker™ units can also be used for every type of contoured conveyor belts.
- **Additional Martin Engineering centring units**
Should the Martin® Tracker™ units not be suited for your individual application, e.g. due to space restrictions or for reversing belts, Martin Engineering offers a wide range of other centring units. Please contact Martin Engineering for further information.

Martin® Tracker™ - Installation position



Installation instructions

The Martin® Tracker™ should be installed at a point which lies three to four times the belt width away from the point, from which the conveyor belt leaves its track.

To maintain conveyor-belt tracking in the loading zone, Martin Engineering recommends the installation of a lower unit in the bottom belt conveyor at a point which is around 5 times the belt width away from the head pulley before the conveyor belt reaches it.

For belt widths greater than 1000 mm, Martin Engineering recommends that the upper unit be installed immediately downstream of the loading zone. Additional units may be required for further optimisation of the belt tracking.

Note

The Martin® Tracker™ operates best with rubber rollers or rubber-coated steel rollers; standard steel rollers can also be used, however.

They cannot be used on reversing belts or conveyor belts with strong belt reverse.

Please contact Martin Engineering for further information or for installing reversing belts.

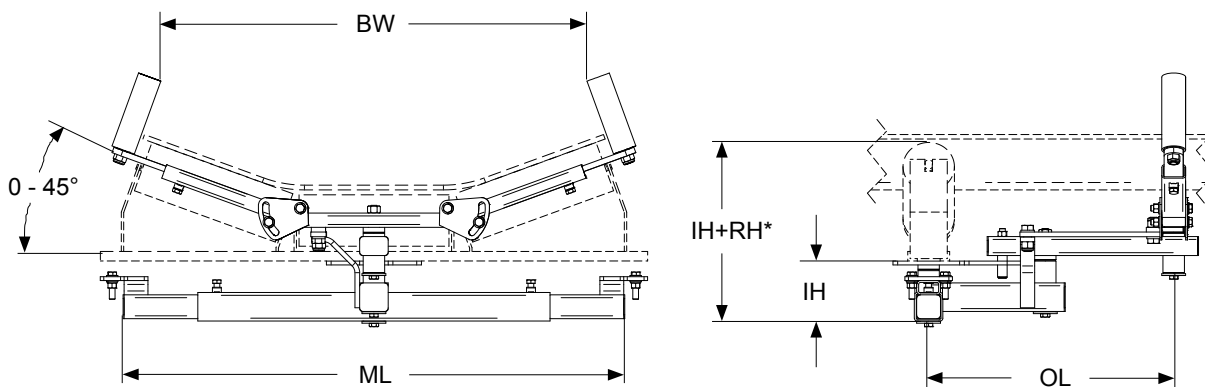
The roller station for the upper unit and the guide roller or conveyor-belt roller for the lower unit is generally provided by the customer and is not included in the scope of delivery of the belt tracking system.

The roller station or conveyor-belt roller which was removed from the point where the tracker unit is installed is typically used for this.

Martin® Tracker™ - Dimensions

Dimensions [mm]

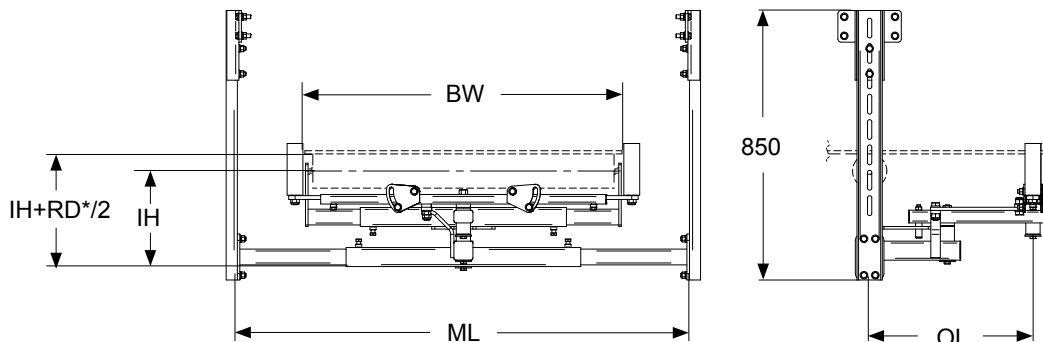
MARTIN® Tracker upper unit



*RH = roller height

Part number	DIM					Weight	
	ML		BW		OL		IH
	min.	max.	min.	max.		[kg]	
41142-0405XUMI	540	790	388	588	480	116	71
41142-0609XUBA	794	1290	588	1008	642	126	113
41142-1013XUBA	1245	1740	928	1406	642	126	206
41142-1013XUHD	1355	2190	988	1418	812	135	244
41142-1417XUHD	1655	2690	1388	1818	812	135	304
41142-1417XUMO	1690	2570	1388	1818	932	145	432
41142-1820XUMO	2090	2970	1388	2168	932	145	456

MARTIN® Tracker lower unit



*RD = roller diameter

Part number	DIM					Weight	
	ML		BW		OL		IH
	min.	max.	min.	max.		[kg]	
41142-0405XLMI	450	810	388	588	480	215	83
41142-0609XLBA	900	1440	588	1008	667	298	131
41142-1013XLBA	1190	1840	928	1406	667	298	223
41142-1013XLHD	1200	2390	988	1418	787	338	273
41142-1417XLHD	1590	2790	1388	1818	787	338	331
41142-1417XLMO	1590	2790	1388	1818	842	432	465
41142-1820XLMO	2066	3190	1388	2168	842	432	487

Selection Guide

The different Martin® Tracker™ belt tracking systems are selected according to belt width and belt speed.

Design		Mini	Basic		Heavy-Duty		Monster	
Belt width as per DIN 22107	Part no.	41142-						
	Possible belt widths	0405XXMI	0609XXBA	1013XXBA	1013XXHD	1417XXHD	1417XXMO	1820XXMO
		380 - 560	600 - 910	910 - 1340	1010 - 1460	1410 - 1860	1410 - 1860	1380 - 2150
400 - 500								
500 - 1000								
1000 - 1400								
1400 - 1800								
1800 - 2200								
Belt speed		<= 1.5 m/s	<= 3.5 m/s		<= 4.0 m/s		<= 5.0 m/s	

Part-number clarification - 41142-aabbccdee

a	Belt width in dm (min)
b	Belt width in dm (max)
c	Design P: painted (RAL 2004) Z: electrogalvanised
d	Unit type U: Upper unit L: Lower unit
e	Design MI: Mini BA: Basic HD: Heavy-Duty MO: Monster



Martin Engineering GmbH
 In der Rehbach 14
 65396 Walluf, Germany
 Tel. +49 6123 97820
 Fax +49 6123 75533
 info@martin-eng.de | www.martin-eng.de

Martin Engineering Ltd.
 8, Experian Way, NG2 Business Park,
 Nottingham NG2 1EP, Nottinghamshire,
 Great Britain
 Phone +44 115 946 4746
 Fax +44 115 946 5550
 info@martin-eng.co.uk | www.martin-eng.co.uk



Subject to technical modifications. Quality management system certified by DNV - ISO 9001

Problem Solved™ GUARANTEED!

Publication no. L3298-11UK-05/16
 © Martin Engineering Company 2016