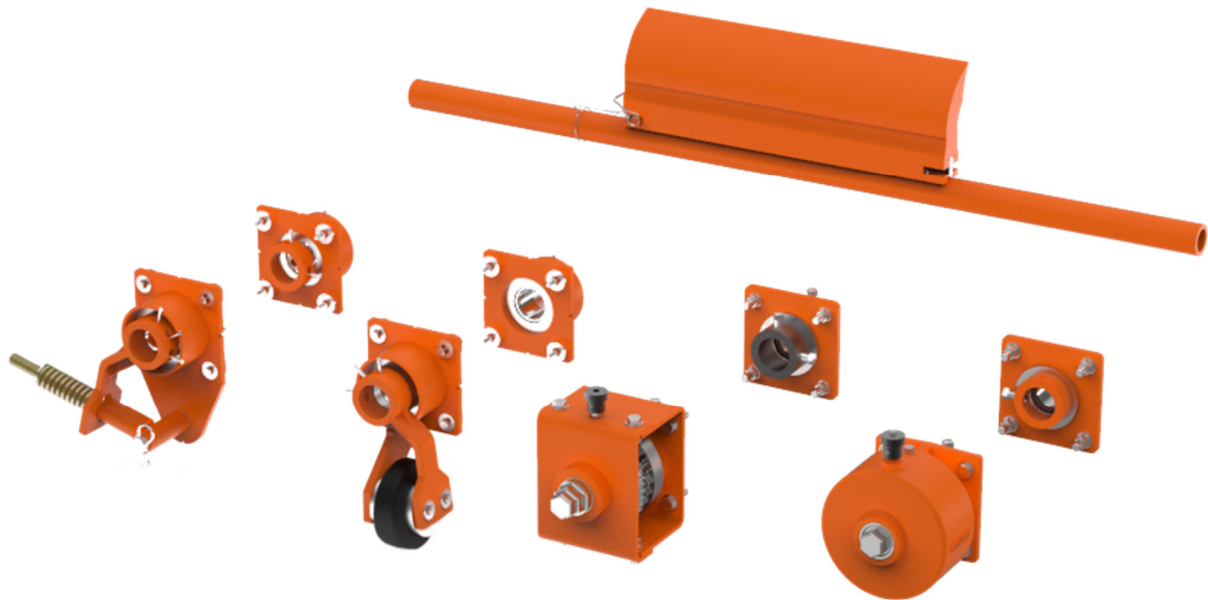


Pit Viper™ Vorabstreifer



Betriebsanleitung Teil 2

Version: 0
Sprache: DE
M3735EDE-02/21

Inhaltsverzeichnis

1	Allgemeines	2
1.1	Zu dieser Betriebsanleitung	2
1.2	Mitgeltende Unterlagen.....	2
1.3	Artikelnummer	3
1.4	Technische Daten:.....	3
2	Einbau	4
2.1	Bestimmung der Installationsposition	4
2.2	Vorbereitung der Montage	5
2.3	Montage der Spannvorrichtung	5
2.4	Montage des Abstreifers.....	6
2.5	Einstellwerte der Twist Tensioner 31443-... und 38850-.....	6
2.6	Einstellwerte der Federspannvorrichtung 38180-.....	7
2.7	Einstellwerte der Seilzugspannvorrichtung 37944-... ..	7
2.8	Einstellwerte der Luftspannvorrichtung 32745-... ..	8
2.9	Kennzeichnungen platzieren	8
3	Lieferumfang und Ersatzteile	9
3.1	Vorabstreifer	9
3.2	Spannvorrichtungen	10

1 Allgemeines



HINWEIS

Vor Beginn der Arbeiten am Abstreifer oder des Förderers muss diese Betriebsanleitung Teil 1 und Teil 2 komplett durchgelesen und verstanden werden.

1.1 Zu dieser Betriebsanleitung

Diese Betriebsanleitung gilt ausschließlich für Abstreifer und richtet sich an diejenigen Personen, die Abstreifer installieren, in Betrieb nehmen und dessen Einsatz überwachen.

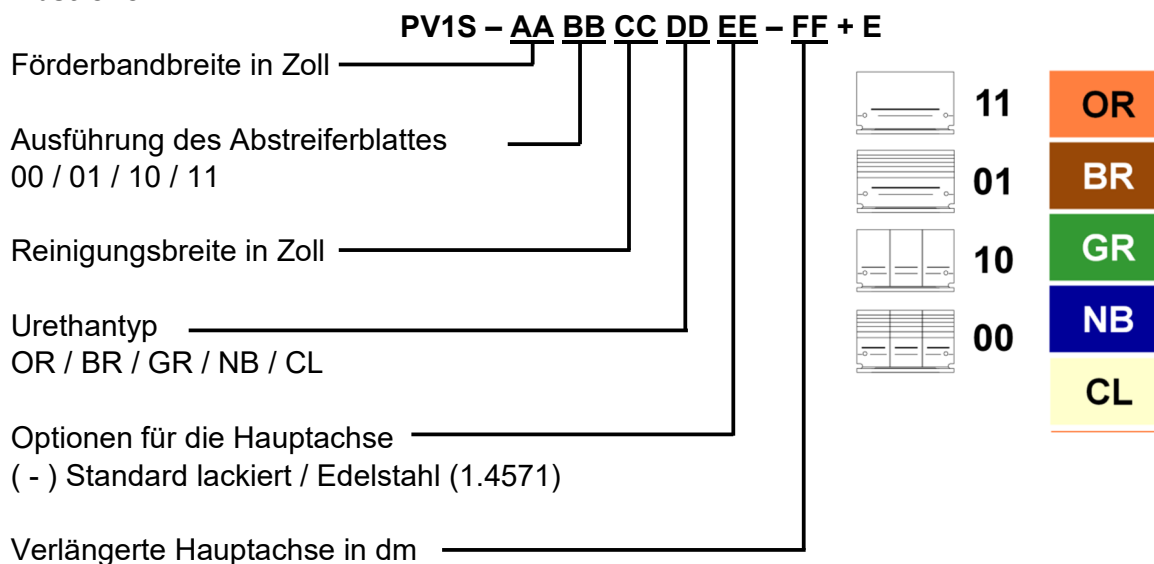
Die Betriebsanleitung muss für die Lebensdauer der Abstreifer aufbewahrt werden und in ordentlichem Zustand allen Personen zugänglich gemacht werden, die mit Arbeiten mit und an Abstreifern betraut sind.

1.2 Mitgeltende Unterlagen

Die separat bereitgestellte Betriebsanleitung Teil 1 ist Bestandteil dieser Betriebsanleitung

1.3 Artikelnummer

Abstreifer



Spannvorrichtung

- Twist tensioner (rund) 38850-...
- Twist tensioner (quadratisch) 31443-...+E
- Spring tensioner: 38180-...
- Seilzugspannvorrichtung 37944-...
- Air tensioner: 32745-...+E

1.4 Technische Daten:

Der Abstreifer ist für folgende Betriebsparameter geeignet:

	Betriebsparameter
Förderbandbreite:	400 – 2.000 mm
Kopftrommeldurchmesser:	200 - 400 mm
Förderbandgeschwindigkeit :	Max. 2,5 m/s
Einsatztemperatur:	-40 - 150 °C abhängig vom verwendeten Urethan
Reversierbetrieb:	Möglich, jedoch ohne Reinigungseffekt

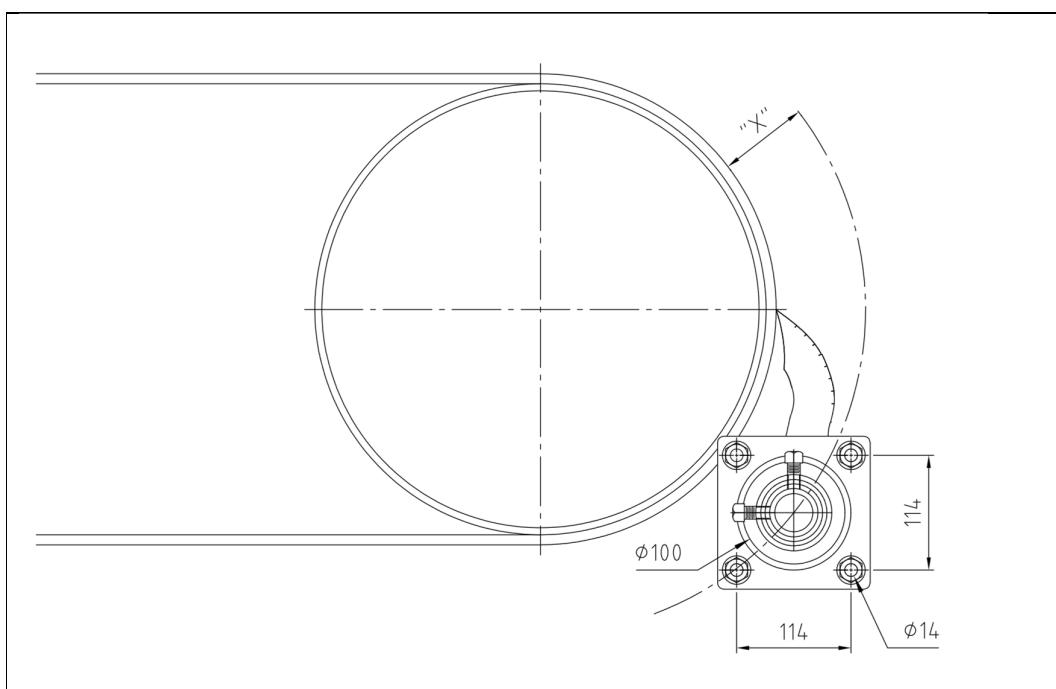
2 Einbau



HINWEIS

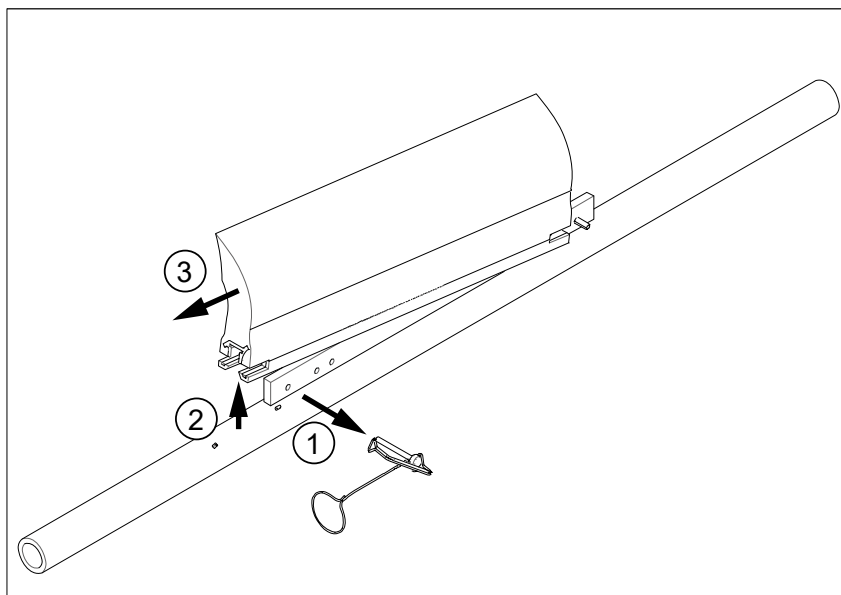
Eine allgemeine Beschreibung der Abstreiferinstallation finden Sie in Teil 1 dieser Betriebsanleitung.

2.1 Bestimmung der Installationsposition

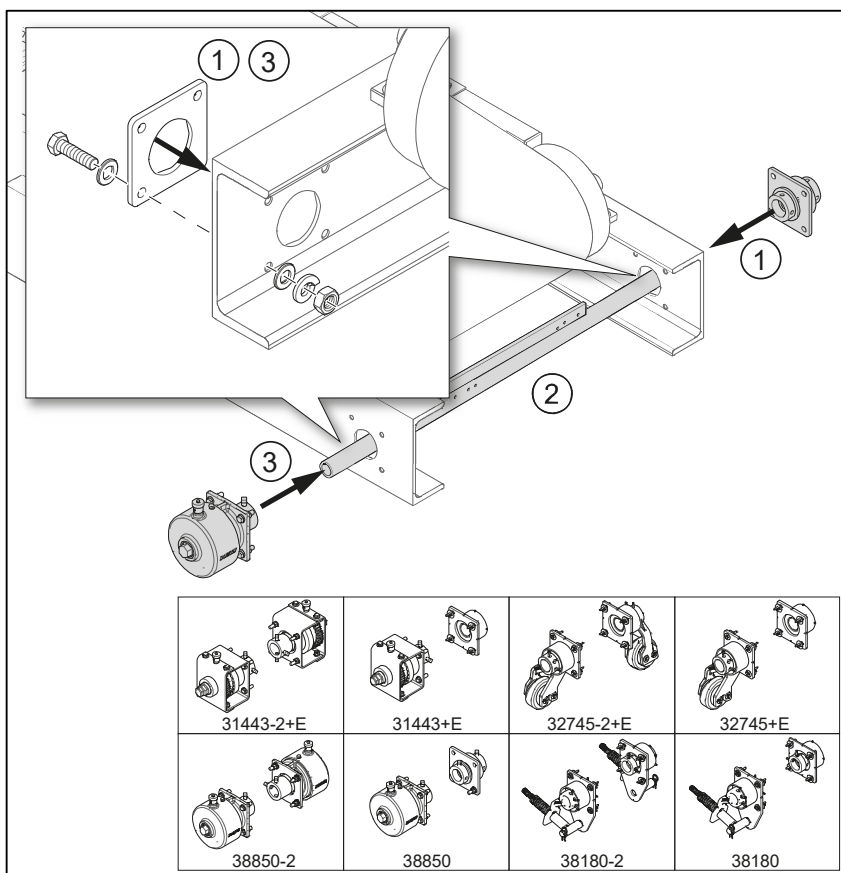


Kopftrommeldurchmesser * in mm	Länge x in mm
200 - 400	76
*(Inklusive Belagstärke und Förderbanddicke)	

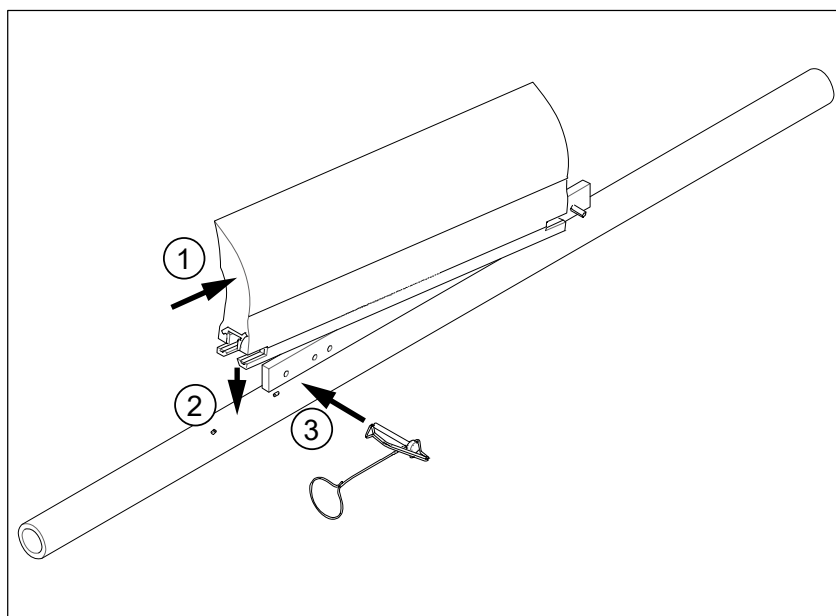
2.2 Vorbereitung der Montage



2.3 Montage der Spannvorrichtung



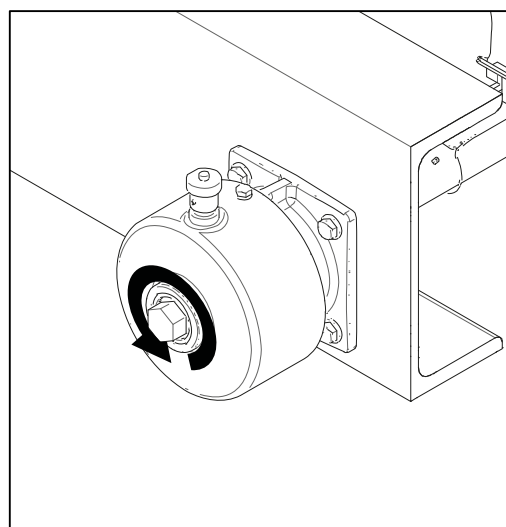
2.4 Montage des Abstreifers



2.5 Einstellwerte der Twist Tensioner 31443-... und 38850-...

Gurtbreite		Anzahl der Rasten (Klicks)
in	mm	
18	500	3
24	650	4
30	800	4
36	1000	4
42	1200	5
48	1400	5
54	1600	4*
60	1800	4*
72	2000	5*

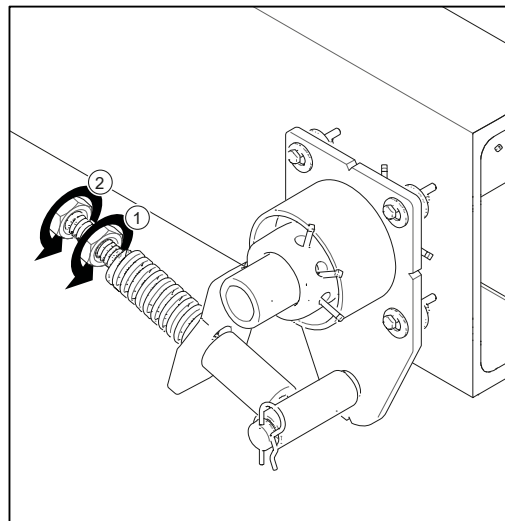
*Pro Spannvorrichtung;
Doppel-Spannvorrichtung benötigt



2.6 Einstellwerte der Federspannvorrichtung 38180-...

Gurtbreite		Länge der Druckfeder in mm
in	mm	
18	500	92
24	650	90
30	800	86
36	1000	83
42	1200	79
48	1400	76
54	1600	86*
60	1800	86*
72	2000	83*

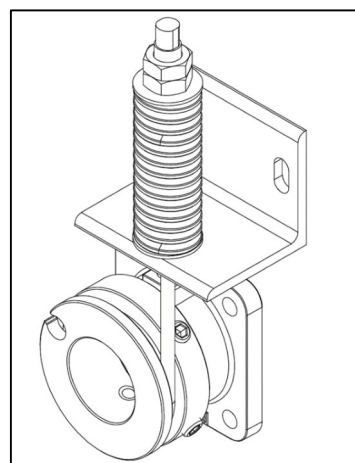
*Pro Spannvorrichtung;
Doppel-Spannvorrichtung benötigt



2.7 Einstellwerte der Seilzugspannvorrichtung 37944-...

Gurtbreite		Länge der Druckfeder in mm
in	mm	
18	500	83
24	650	79
30	800	76
36	1000	67
42	1200	64
48	1400	57
54	1600	73*
60	1800	70*
72	2000	64*

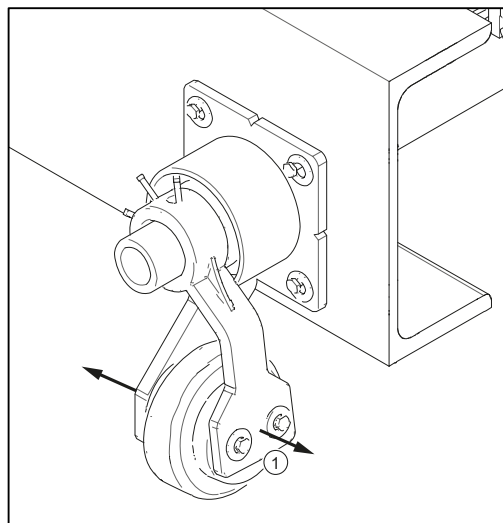
*Pro Spannvorrichtung;
Doppel-Spannvorrichtung benötigt



2.8 Einstellwerte der Luftspannvorrichtung 32745-...

Gurtbreite		Luftdruck in bar
in	mm	
18	500	0,4
24	650	0,6
30	800	0,8
36	1000	1,0
42	1200	1,2
48	1400	1,4
54	1600	0,8*
60	1800	0,9*
72	2000	1,1*

*Per tensioner;
Dual tensioners are needed



2.9 Kennzeichnungen platzieren

2.9.1 Sicherheitskennzeichnung

Die folgende Sicherheitskennzeichnung ist an der Förderanlage in unmittelbarer Nähe zum Abstreifer anzubringen:



2.9.2 Weitere Kennzeichnungen

Die aufgeführten Kennzeichnungen sind bereits am Produkt angebracht:

1. Aufkleber mit der Adresse der Niederlassung von Martin Engineering und der Bezeichnung des Produkts
2. Ein Aufkleber mit den Spannungswerten für das jeweilige Spannsystem

3.2 Spannvorrichtungen

Item / Pos.	Qty. / Anz.	Description / Beschreibung	P/N / Teile-Nr.
1	2	Adjustment ring dia 76 x 25 mm / Stellung	16845
2	1	Sleeve / Spannelement	31388
3	1	Ratchet adjusting knob / Ratschen Einstellknopf	33570-TT
4	1	Tensioner plunger / Schaltstift	33572
5	1	Compressions spring 1" / Druckfeder	33573
6	1	Spring pin 1/8" x 1" / Hohlspannstift	33574
7	1	Self revealing coupling / Selbstauslösende Kupplung	33671
8	1	Tensioning drive / Spannungtriebe	33672
9	1	Coupling / Kupplung	33673
10	1	Nylon bushing dia 44 mm - ID / Nylonbuchse	33674
11	1	Nylon bushing / Nylonhülse	33675
12	1	Shock ring / Dämpfungerring	33681
13	1	Coupling housing / Kupplunggehäuse	38711
14	1	Spring housing / Spannunggehäuse	38712
15	2	Compression washer 5/16" / Federscheibe	11452
16	2	Screw HHC 5/16 x 3/4 / Sechskantkopfschraube	12250
17	6	Square head screw 1/2 x 1 / Vierkantverschraubung	22763-03
18	8	HHC screw M12 x 45 - DIN 933, (1.0032) galv. / Sechskantkopfschraube	41081-12045BZP98
19	8	Hex nut M12 - DIN 934, (1.0032) galv. / Sechskantmutter	41086-12BZP
20	16	Washer flat M12 - DIN 125 A, (1.0032) galv. / Unterlegscheibe	41088-12AZP
21	8	Washer spring M12 - DIN 127, (1.0032) galv. / Federring	41090-12AZP
22	1	Flange / Gegenflansch	32496
23	1	Shock ring / Gummidämpfer	32501
24	1	Nylon bushing / Nylonbuchse	33335
25	1	Washer flat / Unterlegscheibe	34802

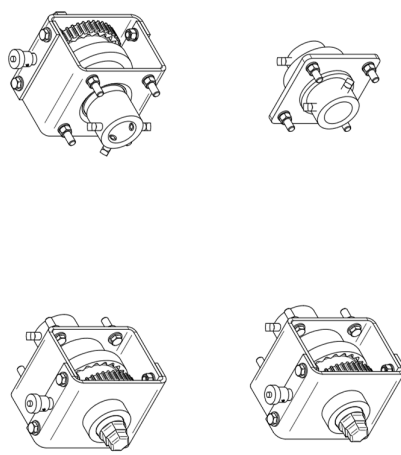
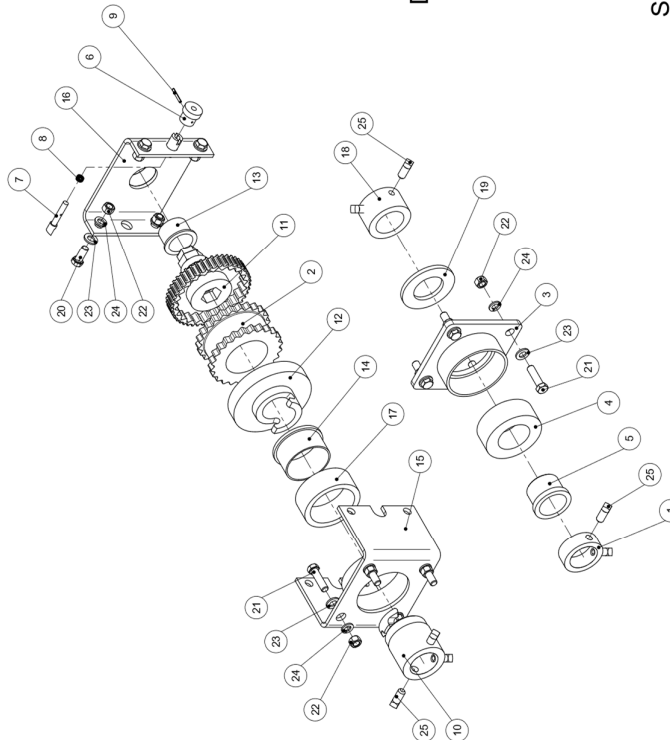
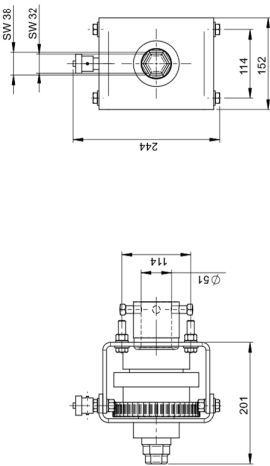
Flat side on knob indicates plunger orientation /
Flache Seite des Knopfes zeigt die Ausrichtung der Anreiterung an

38850-ab
 a Type Ausführung
 Ø: Single Single
 2: Dual Dual
 b Additional options Zusätzliche Optionen
 A: with w eldable adapter plate mit Schweißhalterung
 L: with L-Bracket mit L-Halterung

Notes: Dimensions are given in mm
 2) Weight: Single: 9,8 Kg
 Dual: 13,6 Kg
 Bauschulung: 1400mm
 1) Alle Maße sind in mm
 2) Gewicht: Single: 9,8 Kg
 Dual: 13,6 Kg

© Copyright 2015 Martin Engineering. All rights reserved. Covered by U.S. and foreign patents pending and issued. "pat" indicates trademark of Martin Engineering.
 Date: 09/2014
 File: N.N.
 Date: 09/2014
 Date: 17/2014
 Appr.:
 Plot date: 24.01.2019
 Page: 1/1
 Scale: 1:10
 Title: Twist™ Spannvorrichtung
 Twist™ tensioner
 Drawing No.: 38850-XX

Item/Pos.	Qty./Anz.	Description / Beschreibung	PN / Teil-Nr.
1	1	Locking collar / Sicherungsring	16845+E
2	1	Sleeve / Spannelement	31988
3	1	Flange / Gegenflansch	32498
4	1	Shock ring / Gummidämpfer	32501
5	1	Nylon bushing / Nylonbuchse	33535
6	1	Retainer / Ratschen Einstellknopf	33570-TT
7	1	Tensioner plunger / Schallsift	33572
8	1	Compression spring / Druckfeder	33573
9	1	Spring pin 1/8" x 1" / Hohlspannsift	33574
10	1	Self-revelling coupling / Selbstauslösende Kupplung	33671
11	1	Gear casing / Spannerad	33672+HE
12	1	Locking gear / Kupplung	33673+HE
13	1	Nylon bushing 1,3/4" / Nylonbuchse	33674-I
14	1	Nylon bushing / Nylonhülse	33675
15	1	Base support / Basisaufnahme	33676
16	1	Tensioning support / Spannvorrichtungsaufnahme	33677
17	1	Shock ring / Dämpfungsring	33681
18	1	Mounting hub (Metric) / Sicherungsring	34603+E
19	1	Washer flat / Unterlegscheibe	34802
20	4	HHC screw M12 x 30 - DIN 933. (1.0032)galv. / Sechskantschraube	41081-12030BZF-B
21	8	HHC screw M12 x 45 - DIN 933. (1.0032)galv. / Sechskantschraube	41081-12045BZF-B
22	12	Hex nut M12 - DIN 934. (1.0032)galv. / Sechskennmutter	41086-12BZP
23	12	Washer flat M12 - DIN 125 A. (1.0032)galv. / Unterlegscheibe	41088-12AZP
24	12	Washer spring M12 - DIN 127 / Federung	41090-12AZP
25	7	Screw S4 M12x25 (DIN 479) / Vierkantschraube	41444-12025BZP



Dual

Single

Part number / Teilenummer	
a	31443-zabb-b+E
Type	Ausführung
Q	Single
ZR	Dual
b	Body type
I	Steel body (1.0037)
IL	Steel body with extended coupling
ICL	Steel body with side cover (black)
C	Steel body with side cover (orange)
Ac	Stainless steel body (1.4571)
c	Finish
Q	Orange (RAL 2004) - Standard
C	Orange (RAL 2004) - CSW

REVISIO	
No.	31443-3000004E
Date	
Drawn by	
Checked by	
Approved by	
Scale	1:1
Page	15

© Copyright 2004 Martin Engineering, Inc. All Rights Reserved. Printed in the USA.
 Martin Engineering, Inc. 10000 Highway 100, P.O. Box 100, Dayton, OH 45424
 Martin Engineering GmbH
 65386 Walluf, Germany
 TWIST Technology (Schäufelung)
 TWIST Technology (Schäufelung)

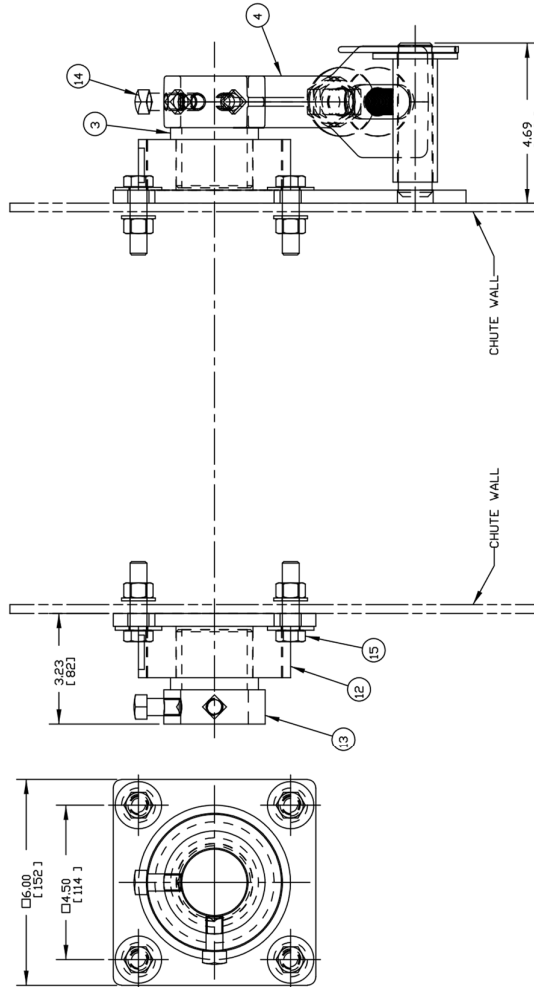
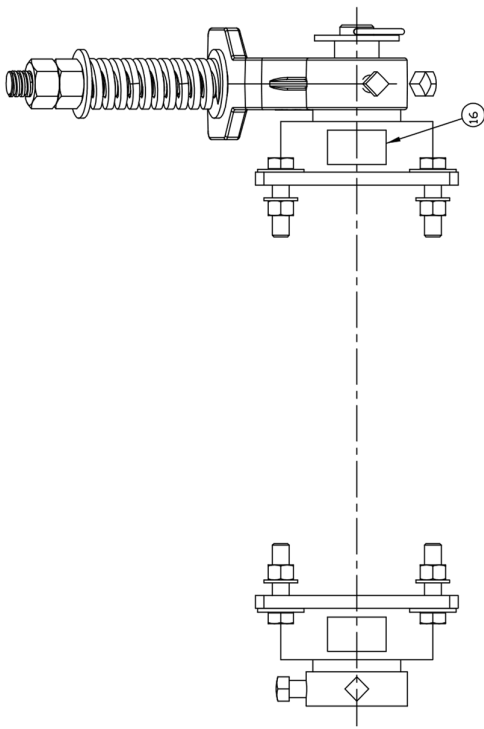
ITEM	QTY.	DESCRIPTION	PART NUMBER
1	1	SPRING TENS MNT PLT WELDMT	32517
2	2	CHECK RING	32501
3	2	NYLON BUSHING	32325
4	1	SPRING TENSIONER PADDLE ARM	305889-ST
5	1	ROD WELDMENT W/SS ROD	38176
6	1	WASHER FLAT 1 REGULAR ZP	32315
7	1	HAIRPIN CUTTER 18 DIA X 3.56 ZP	35171
8	2	WASHER FLAT 3/4 WIDE ZP	20164
9	1	MEDIUM DUTY SPRING	32244-M
10	1	MEDIUM- HEAVY DUTY SPRING	32244-MH
11	2	NUT HEX 3/4-6 ACME ZP	38170
12	1	FLANGE PLATE WELDMT	32496
13	1	MOUNTING HUB	16845
14	5	SCREW SHS 1/2-13NC X 1 SS	22763-03
15	1	MOUNTING HARDWARE KIT	34498
16	2	LABEL MARTIN PRODUCTS	32238
17	1	LABEL PINCH POINT WARNING	30528
18	2	LABEL CONVEYOR PRODUCTS WARNING	23395
19	1	LABEL SPRING TENSIONER	32259
20	1	MANUAL OPERATOR'S	M3263

SEE NOTE 3
SEE NOTE 3 NS

NS

NS

NS = NOT SHOWN



- NOTES:
 1) ALL DIMENSIONS ARE GIVEN IN INCHES (MM).
 2) PRE-CLEANERS ARE TO BE USED FOR ASSEMBLY.
 3) TENSIONER IS ASSEMBLED FOR USE IN PRIMARY PRE-CLEANERS (WITH THE GREEN SPRING P/N 32244-M). CHANGE SPRING FOR USE ON SECONDARY CLEANERS (USE THE SHIPPED LOOSE BLUE SPRING P/N 32244-MH).
 4) (K) INSTALLED SHIPPED LOOSE AND (S) SHIPPED LOOSE. (L) INSTALLED SHIPPED LOOSE LABELS ON CHUTE WALL NEXT TO TENSIONER.
 5) SHIP ONE COPY OF DRAWING 38180 WITH ASSEMBLY.
 6) WEIGHT: 22.0 LBS.

		NEPONSET ILLINOIS USA	DRAWN RND DATE 06/25/07
STANDARD DUTY SINGLE SPRING TENSIONER ASM F/48.00 BELTS & BELOW		CHECKED MJB DATE 07/20/07	ENGR MJB DATE 07/20/07
APPROVED DM		DATE 07/22/07	SCALE 7/16
DRAWING NUMBER 38180		PART NUMBER 38180	

NO.	DESCRIPTION	ECN	DATE	BY

38180

Pos./Item	Anz./Qty	Beschreibung / Description	Teile-Nr./P/N
1	1	Gummidämpfungs-Luftspanner / Shockmount air paddle tensioner	32745
2	1	Reduziernippel 1/4" NPT OD-G1/4" ID / Reducer nipple	41254-02

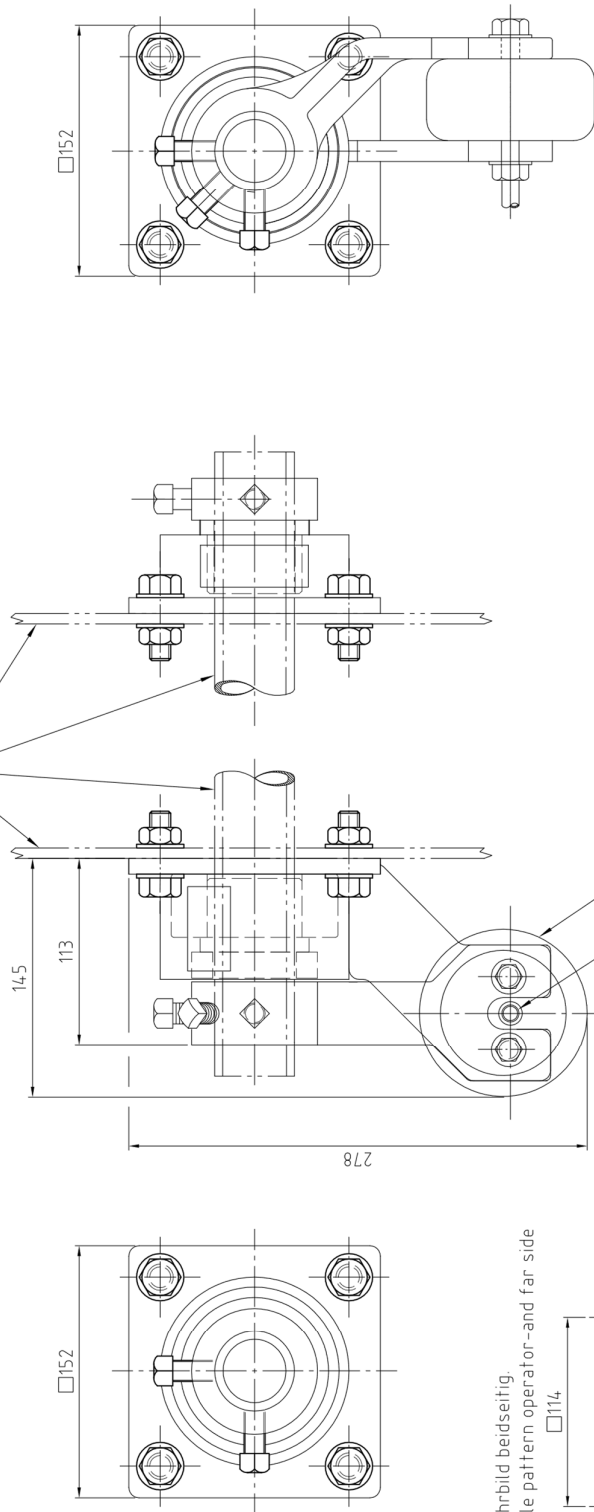
Bemerkung:

- 1) Alle Maße sind in mm.
- 2) Alle Maße ca. Angaben

Note:

- 1) All dimension are given in mm.
- 2) All dimensions are for reference only.

Nur zur Verdeutlichung gezeigt.
Only shown for clarity.



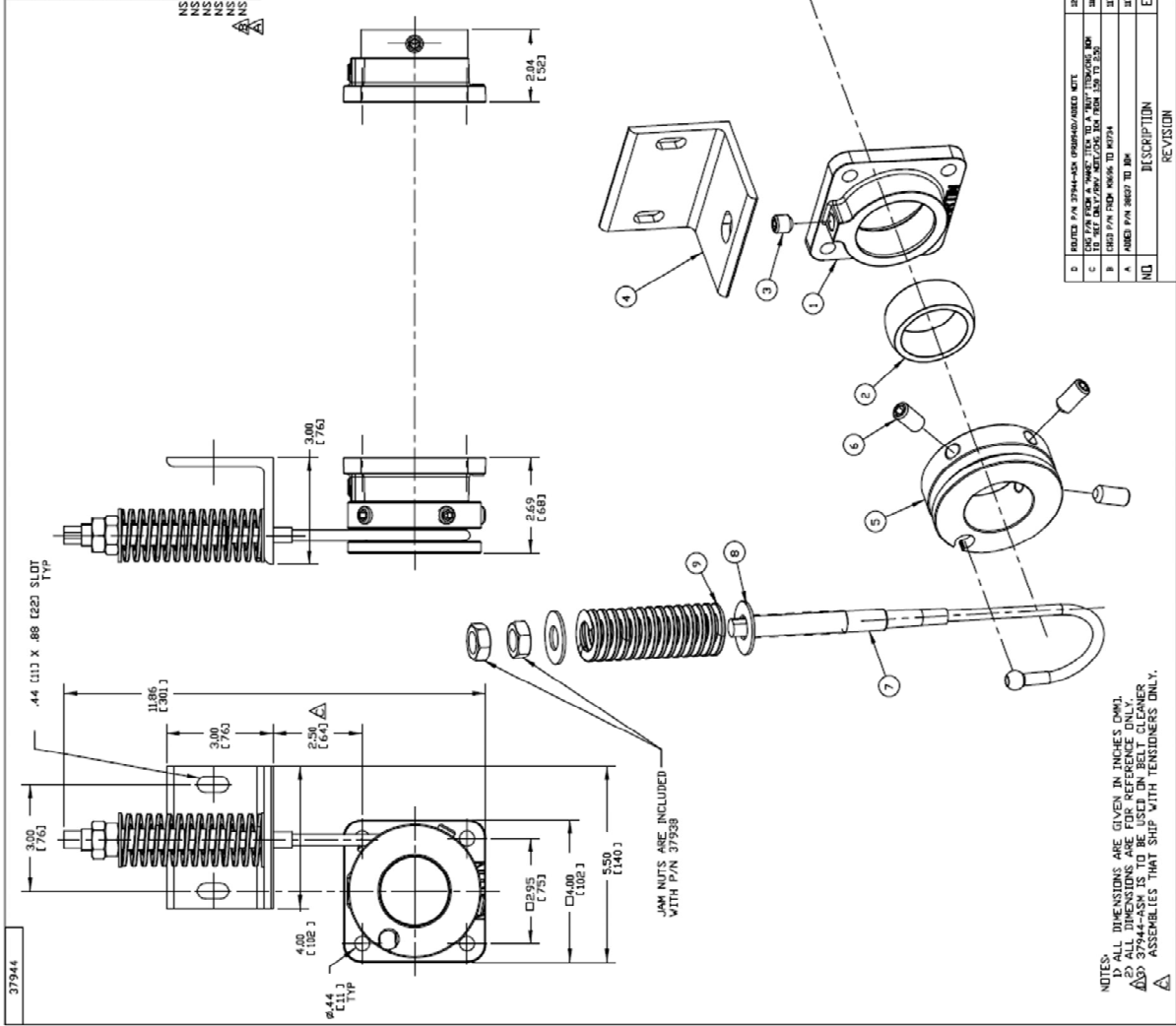
Bohrbild beidseitig.
Hole pattern operator- and far side

<p>© Copyright 1995 Martin Engineering. All rights reserved. Covered by U.S. and foreign patents pending and issued. ® and ® indicate trademarks of Martin Engineering.</p>	
Drawn: sbe	Date: 14.05.2008
Kontrolliert	Checked
Eng.:	Date:
Aggr.:	Date:
Plott	Date: 14.05.2008
Ms./Ver:	1:2.5
<p>MARTIN ENGINEERING GMBH In der Rehbach 14 65396 Walluf GERMANY</p>	
<p>Gummidämpfungs-Luftspanner Shockmount air paddle tensioner</p>	
Bemerkung Title	
Zeichn.Nr. Drawing No.	32745+E
<p>1/1 Überarbeitet/changed by sbe</p>	

C			
B			
A	Zeichnung komplett überarbeitet.	14.05.08	sbe
Nr. No.	Bemennung (Description)	Datum date	Name by
	Änderung (Revision)		

ITEM	QTY	DESCRIPTION	PART NUMBER
1	2	CABLE TENS BEARING HOUSING	37934
2	2	CABLE TENSIDNER NYLON BEARING	37935
3	2	SCREW SET SDC CUP 1/2-13NC X 1/2 SS	37943
4	1	TENSIDNER BEARING BRACKET	37939
5	1	CABLE TENSIDNER HUB	37941
6	3	SCREW SET SDC CUP 1/2-13NC X 1 SS	37941
7	1	CABLE TENSIDNER CABLE ASSEMBLY	37938
8	2	WASHER FLAT 5/8 SS	23343
9	1	SPRING STEEL COLLAR	37939
10	1	SCREW SET SDC CUP 1/2-13NC X 5/8 SS	37942
11	1	CABLE TENS MOUNTING HARDWARE KIT	37942
12	1	CABLE TENSIDNER TENSIDNER	37932
13	1	LABEL TENSIDNER WARNING	37932
14	1	LABEL TENSIDNER WARNING	37932
15	1	MANUAL OPERATORS WARNING	37932
16	1	MANUAL OPERATORS WARNING	37932
17	1	ALLEN WRENCH 6MM	38037

NS = NOT SHOWN
 △ = DIM FOR REFERENCE ONLY



DATE	BY	DESCRIPTION	REVISION
02/06/06	EM	REVISED P/N 37944-ASX (PREVIOUS REVISED KIT)	1
02/06/06	EM	REVISED P/N 37944-ASX (PREVIOUS REVISED KIT)	2
02/06/06	EM	REVISED P/N 37944-ASX (PREVIOUS REVISED KIT)	3
02/06/06	EM	REVISED P/N 37944-ASX (PREVIOUS REVISED KIT)	4
02/06/06	EM	REVISED P/N 37944-ASX (PREVIOUS REVISED KIT)	5
02/06/06	EM	REVISED P/N 37944-ASX (PREVIOUS REVISED KIT)	6
02/06/06	EM	REVISED P/N 37944-ASX (PREVIOUS REVISED KIT)	7
02/06/06	EM	REVISED P/N 37944-ASX (PREVIOUS REVISED KIT)	8
02/06/06	EM	REVISED P/N 37944-ASX (PREVIOUS REVISED KIT)	9
02/06/06	EM	REVISED P/N 37944-ASX (PREVIOUS REVISED KIT)	10
02/06/06	EM	REVISED P/N 37944-ASX (PREVIOUS REVISED KIT)	11
02/06/06	EM	REVISED P/N 37944-ASX (PREVIOUS REVISED KIT)	12
02/06/06	EM	REVISED P/N 37944-ASX (PREVIOUS REVISED KIT)	13
02/06/06	EM	REVISED P/N 37944-ASX (PREVIOUS REVISED KIT)	14
02/06/06	EM	REVISED P/N 37944-ASX (PREVIOUS REVISED KIT)	15
02/06/06	EM	REVISED P/N 37944-ASX (PREVIOUS REVISED KIT)	16
02/06/06	EM	REVISED P/N 37944-ASX (PREVIOUS REVISED KIT)	17

DATE	BY	DESCRIPTION	REVISION
02/06/06	EM	REVISED P/N 37944-ASX (PREVIOUS REVISED KIT)	1
02/06/06	EM	REVISED P/N 37944-ASX (PREVIOUS REVISED KIT)	2
02/06/06	EM	REVISED P/N 37944-ASX (PREVIOUS REVISED KIT)	3
02/06/06	EM	REVISED P/N 37944-ASX (PREVIOUS REVISED KIT)	4
02/06/06	EM	REVISED P/N 37944-ASX (PREVIOUS REVISED KIT)	5
02/06/06	EM	REVISED P/N 37944-ASX (PREVIOUS REVISED KIT)	6
02/06/06	EM	REVISED P/N 37944-ASX (PREVIOUS REVISED KIT)	7
02/06/06	EM	REVISED P/N 37944-ASX (PREVIOUS REVISED KIT)	8
02/06/06	EM	REVISED P/N 37944-ASX (PREVIOUS REVISED KIT)	9
02/06/06	EM	REVISED P/N 37944-ASX (PREVIOUS REVISED KIT)	10
02/06/06	EM	REVISED P/N 37944-ASX (PREVIOUS REVISED KIT)	11
02/06/06	EM	REVISED P/N 37944-ASX (PREVIOUS REVISED KIT)	12
02/06/06	EM	REVISED P/N 37944-ASX (PREVIOUS REVISED KIT)	13
02/06/06	EM	REVISED P/N 37944-ASX (PREVIOUS REVISED KIT)	14
02/06/06	EM	REVISED P/N 37944-ASX (PREVIOUS REVISED KIT)	15
02/06/06	EM	REVISED P/N 37944-ASX (PREVIOUS REVISED KIT)	16
02/06/06	EM	REVISED P/N 37944-ASX (PREVIOUS REVISED KIT)	17

DATE	BY	DESCRIPTION	REVISION
02/06/06	EM	REVISED P/N 37944-ASX (PREVIOUS REVISED KIT)	1
02/06/06	EM	REVISED P/N 37944-ASX (PREVIOUS REVISED KIT)	2
02/06/06	EM	REVISED P/N 37944-ASX (PREVIOUS REVISED KIT)	3
02/06/06	EM	REVISED P/N 37944-ASX (PREVIOUS REVISED KIT)	4
02/06/06	EM	REVISED P/N 37944-ASX (PREVIOUS REVISED KIT)	5
02/06/06	EM	REVISED P/N 37944-ASX (PREVIOUS REVISED KIT)	6
02/06/06	EM	REVISED P/N 37944-ASX (PREVIOUS REVISED KIT)	7
02/06/06	EM	REVISED P/N 37944-ASX (PREVIOUS REVISED KIT)	8
02/06/06	EM	REVISED P/N 37944-ASX (PREVIOUS REVISED KIT)	9
02/06/06	EM	REVISED P/N 37944-ASX (PREVIOUS REVISED KIT)	10
02/06/06	EM	REVISED P/N 37944-ASX (PREVIOUS REVISED KIT)	11
02/06/06	EM	REVISED P/N 37944-ASX (PREVIOUS REVISED KIT)	12
02/06/06	EM	REVISED P/N 37944-ASX (PREVIOUS REVISED KIT)	13
02/06/06	EM	REVISED P/N 37944-ASX (PREVIOUS REVISED KIT)	14
02/06/06	EM	REVISED P/N 37944-ASX (PREVIOUS REVISED KIT)	15
02/06/06	EM	REVISED P/N 37944-ASX (PREVIOUS REVISED KIT)	16
02/06/06	EM	REVISED P/N 37944-ASX (PREVIOUS REVISED KIT)	17

DATE	BY	DESCRIPTION	REVISION
02/06/06	EM	REVISED P/N 37944-ASX (PREVIOUS REVISED KIT)	1
02/06/06	EM	REVISED P/N 37944-ASX (PREVIOUS REVISED KIT)	2
02/06/06	EM	REVISED P/N 37944-ASX (PREVIOUS REVISED KIT)	3
02/06/06	EM	REVISED P/N 37944-ASX (PREVIOUS REVISED KIT)	4
02/06/06	EM	REVISED P/N 37944-ASX (PREVIOUS REVISED KIT)	5
02/06/06	EM	REVISED P/N 37944-ASX (PREVIOUS REVISED KIT)	6
02/06/06	EM	REVISED P/N 37944-ASX (PREVIOUS REVISED KIT)	7
02/06/06	EM	REVISED P/N 37944-ASX (PREVIOUS REVISED KIT)	8
02/06/06	EM	REVISED P/N 37944-ASX (PREVIOUS REVISED KIT)	9
02/06/06	EM	REVISED P/N 37944-ASX (PREVIOUS REVISED KIT)	10
02/06/06	EM	REVISED P/N 37944-ASX (PREVIOUS REVISED KIT)	11
02/06/06	EM	REVISED P/N 37944-ASX (PREVIOUS REVISED KIT)	12
02/06/06	EM	REVISED P/N 37944-ASX (PREVIOUS REVISED KIT)	13
02/06/06	EM	REVISED P/N 37944-ASX (PREVIOUS REVISED KIT)	14
02/06/06	EM	REVISED P/N 37944-ASX (PREVIOUS REVISED KIT)	15
02/06/06	EM	REVISED P/N 37944-ASX (PREVIOUS REVISED KIT)	16
02/06/06	EM	REVISED P/N 37944-ASX (PREVIOUS REVISED KIT)	17



Germany

Martin Engineering GmbH
In der Rehbach 14, 65396 Walluf, Germany
Tel. +49 (0)6123 97820; Fax +49 (0)6123 75533
info@martin-eng.de; www.martin-eng.de

Spain

Martin Engineering Spain
c/Balmes 297 1er 2a, 08006 Barcelona, Spain
Tel. +34 (0)876 245114; Fax +34 (0)966 719371
info@martin-eng.es; www.martin-eng.es

Great Britain

Martin Engineering Ltd.
8, Experian Way, NG2 Business Park,
Nottingham NG2 1EP, Nottinghamshire, Great Britain
Tel +44 115 946 4746; Fax +44 115 946 5550
info@martin-eng.co.uk; www.martin-eng.co.uk

Turkey

Martin Engineering Türkiye
Yukarı Dudullu İmes Sanayi Sitesi, B Blok 205 Sokak No.6
34775 Ümraniye İstanbul, Turkey
Tel +90 216 499 34 91; Fax +90 216 499 34 90
info@martin-eng.com.tr; www.martin-eng.com.tr

France

Martin Engineering SARL
50 Avenue d'Alsace, 68025 Colmar Cedex, France
Tel +33 389 20 63204; Fax +33 389 20 4379
info@martin-eng.fr; www.martin-eng.fr

Italy

Martin Engineering Italy Srl
Via Buonarroti, 43/A, 20064 Gorgonzola (MI), Italy
Tel +39 295 3838 51; Fax +39 295 3838 15
info@martin-eng.it; www.martin-eng.it

Russia

OOO Martin Engineering
Ul. Bolshaya Dmitrovka, 23/1
125009 Moscow, Russia
Tel +7 495 181 33 43; Fax +7 499 720 62 12
info@martin-eng.ru; www.martin-eng.ru