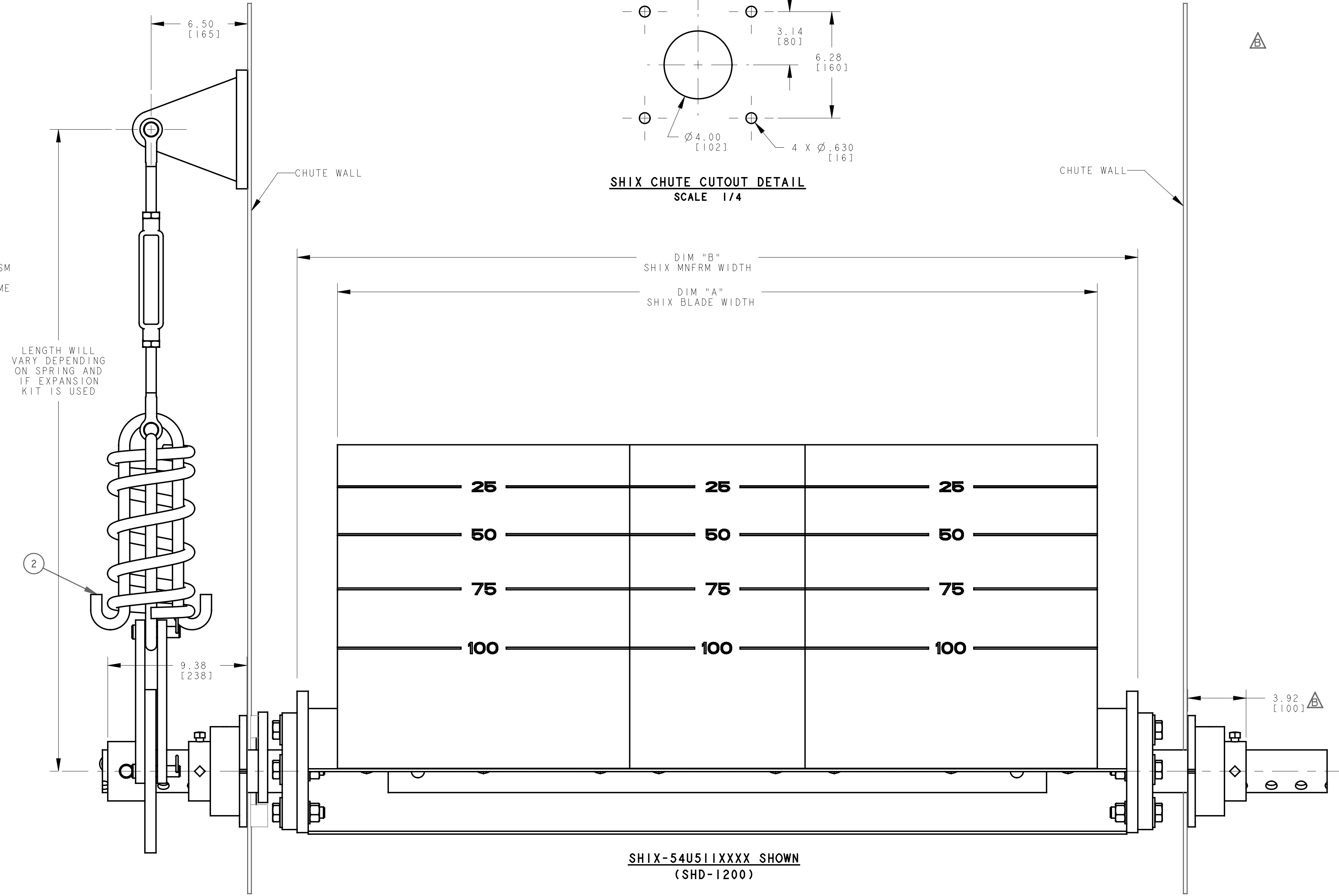
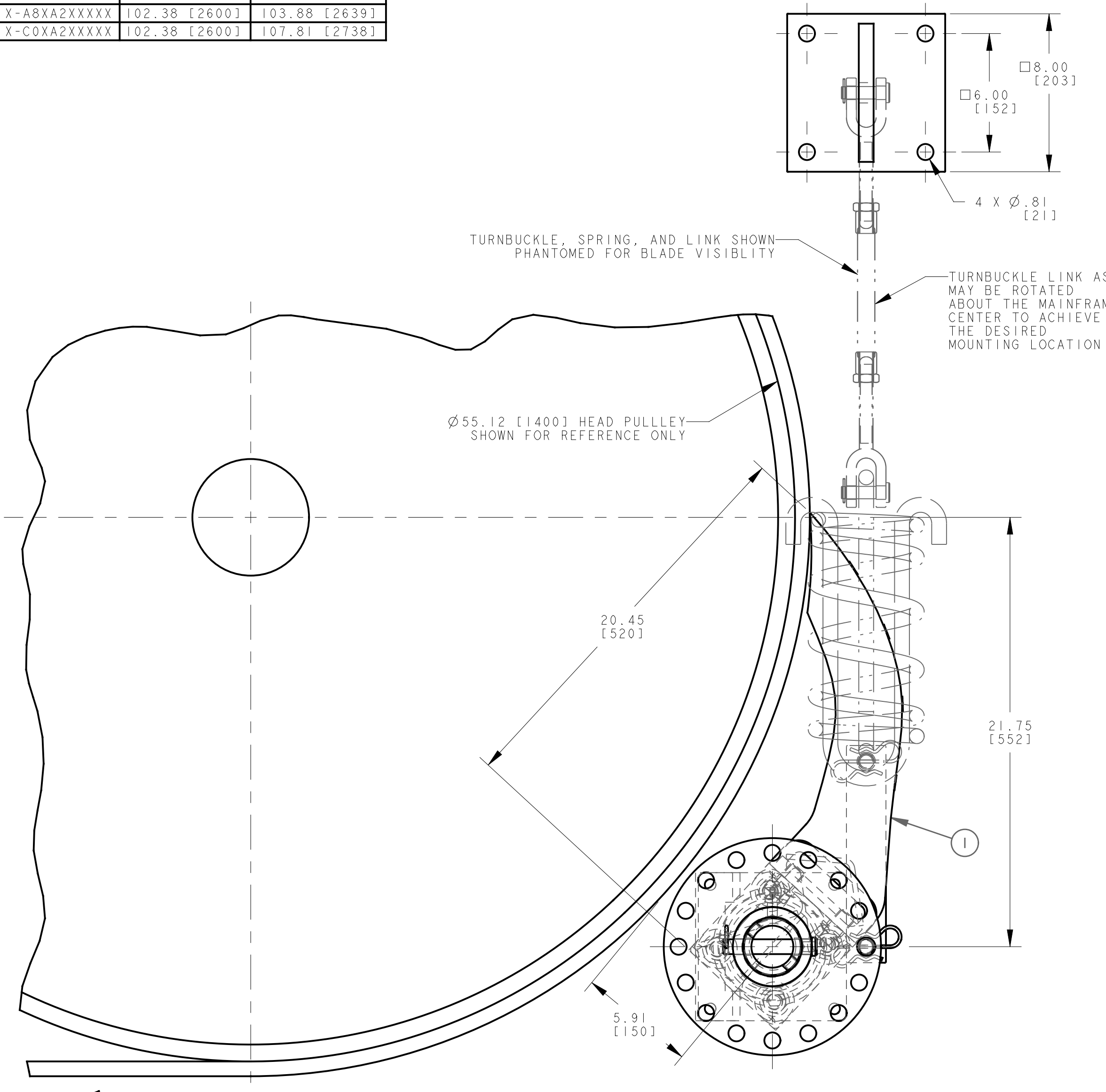
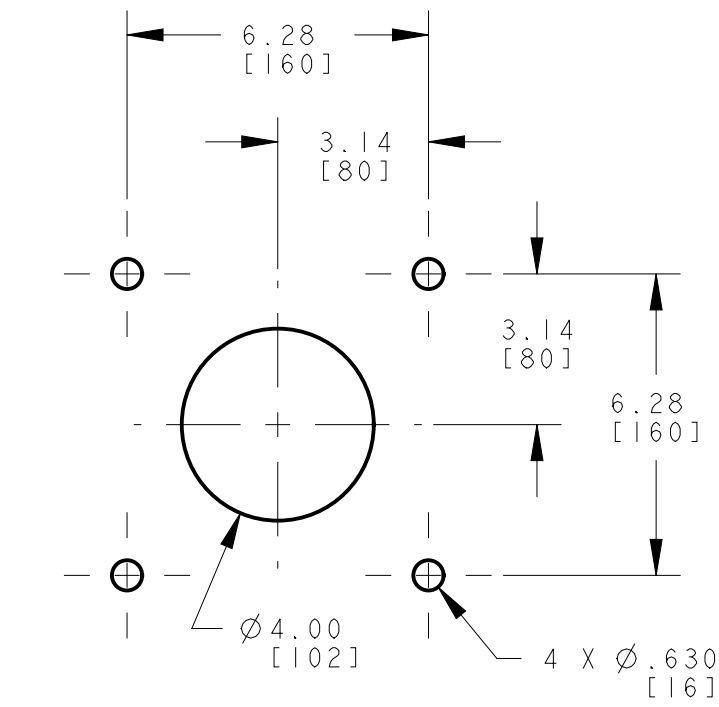


ASSEMBLY PART NUMBER	DIM "A" BLADE LENGTH	DIM "B" MNFRM LENGTH
SHIX-36X32XXXX	31.50 [800]	36.93 [938]
SHIX-42X39XXXX	39.38 [1000]	44.81 [1138]
SHIX-48X43XXXX	43.31 [1100]	48.75 [1238]
SHIX-54X51XXXX	51.19 [1300]	56.63 [1438]
SHIX-60X59XXXX	59.06 [1500]	64.50 [1638]
SHIX-72X71XXXX	70.88 [1800]	76.31 [1938]
SHIX-84X71XXXX	70.88 [1800]	84.19 [2138]
SHIX-84X79XXXX	78.75 [2000]	84.19 [2138]
SHIX-96X83XXXX	82.69 [2100]	88.13 [2239]
SHIX-A8X71XXXX	70.88 [1800]	103.88 [2639]
SHIX-A8X98XXXX	98.44 [2500]	103.88 [2639]
SHIX-A8XA2XXXX	102.38 [2600]	103.88 [2639]
SHIX-C0XA2XXXX	102.38 [2600]	107.81 [2738]

ITEM	QTY.	DESCRIPTION	PART NUMBER
1	1	SHIX PRIMARY CLEANER ASM	SHIX-XXXXXXXXXX
2	1	SPRING LINK TENSIONER ASM	SEE CHART



NOTES:  
 1) ALL DIMENSIONS ARE GIVEN IN INCHES [MM].  
 2) ALL DIMENSIONS ARE FOR REFERENCE ONLY.  
 3) IN THE SHIX PART NUMBER THE SHIX INDICATES AN EXTRA HEAVY DUTY PRIMARY CLEANER. THE NEXT TWO XX'S INDICATE THE BELT WIDTH. THE NEXT X INDICATES BLADE TYPE  
 U = URETHANE  
 C = URETHANE W/CERAMIC BEADS  
 THE NEXT TWO XX'S INDICATE THE BLADE WIDTH. THE NEXT X INDICATES THE BLADE PROFILE  
 I = SHD-1200  
 6 = SHD-600  
 THE NEXT X INDICATES THE URETHANE TYPE  
 B = BROWN  
 G = GREEN  
 O = ORANGE  
 Y = CERAMIC/YELLOW  
 THE NEXT X INDICATES THE MAINFRAME OPTIONS  
 P = PAINTED ORANGE MAINFRAME  
 C = CORROSION RESISTANT MAINFRAME  
 THE NEXT X INDICATES THE END WELDMENT LENGTHS (INCHES)  
 2 = 20  
 3 = 30  
 4 = 40  
 THE NEXT X INDICATES THE TENSIONER AND ACCESSORY OPTIONS  
 L = WITH PAINTED LINK TENSIONER  
 C = WITH CORROSION RESISTANT LINK TENSIONER

NOTES:  
 4) WHERE EXTREME OR UNUSUAL CONDITIONS EXIST, OR SPECIAL MAINFRAME LENGTHS ARE REQUIRED, CONTACT MARTIN.  
 5) THE SHIX PRECLEANER BLADES ARE DESIGNED TO REMOVE HEAVY CARRYBACK ONLY. DO NOT OVERTENSION.  
 6) BLADE COVERAGE WILL BE LESS THAN BELT WIDTH DUE TO POSSIBLE MISTRACKING OR DAMAGED EDGES OF BELT.  
 7) REQUIRED EFFECTIVE HEAD PULLEY DIAMETERS (HEAD PULLEY + LAGGING + BELT THICKNESS) ARE 47.24 [1200] MINIMUM THRU 70.87 [1800] MAXIMUM FOR THE SHIX-1200.  
 8) FRAME LENGTH IS SUPPLIED LONGER THAN REQUIRED, CUT IN FIELD TO DESIRED LENGTH.  
 9) TENSIONER ASSEMBLY MAY BE BOLTED OR WELDED IN PLACE. MARTIN ENGINEERING RECOMMENDS BOLTING WHEN APPLICABLE FOR EASIER MAINTENANCE AND ACCESSIBILITY.  
 10) REFER TO OPERATOR'S MANUAL'S, FOR INSTALLATION AND TENSIONING INSTRUCTIONS.  
 11) CLEANER IS SHOWN IN RECOMMENDED POSITION.

ASSEMBLY PART NUMBER	PART NUMBER ITEM 2
SHIX-36X321XXXX	35978-D150M
SHIX-36X326XXXX	35978-D150M
SHIX-42X391XXXX	35978-D150M
SHIX-42X396XXXX	35978-S500M
SHIX-48X436XXXX	35978-D150M
SHIX-48X431XXXX	35978-S500M
SHIX-54X516XXXX	35978-D150M
SHIX-54X511XXXX	35978-S500M
SHIX-60X596XXXX	35978-D150M
SHIX-60X591XXXX	35978-S750M
SHIX-72X716XXXX	35978-S500M
SHIX-72X711XXXX	35978-S750M
SHIX-84X716XXXX	35978-S500M
SHIX-84X711XXXX	35978-S750M
SHIX-84X796XXXX	35978-S500M
SHIX-84X791XXXX	35978-S750M
SHIX-96X836XXXX	35978-S500M
SHIX-96X831XXXX	35978-D500M
SHIX-A8X716XXXX	35978-S500M
SHIX-A8X711XXXX	35978-S750M
SHIX-A8X986XXXX	35978-S750M
SHIX-A8X981XXXX	35978-D500M
SHIX-A8XA26XXXX	35978-S750M
SHIX-A8XA21XXXX	35978-D500M
SHIX-C0XA26XXXX	35978-S750M
SHIX-C0XA21XXXX	35978-D500M

ASSEMBLY PART NUMBER	PART NUMBER ITEM 2
SHIX-36X321XXXX	35978-C-D150M0
SHIX-36X326XXXX	35978-C-D150M0
SHIX-42X391XXXX	35978-C-D150M0
SHIX-42X396XXXX	35978-C-S500M0
SHIX-48X436XXXX	35978-C-D150M0
SHIX-48X431XXXX	35978-C-S500M0
SHIX-54X516XXXX	35978-C-D150M0
SHIX-54X511XXXX	35978-C-S500M0
SHIX-60X596XXXX	35978-C-D150M0
SHIX-60X591XXXX	35978-C-S750M0
SHIX-72X716XXXX	35978-C-S500M0
SHIX-72X711XXXX	35978-C-S750M0
SHIX-84X716XXXX	35978-C-S500M0
SHIX-84X711XXXX	35978-C-S750M0
SHIX-84X796XXXX	35978-C-S500M0
SHIX-84X791XXXX	35978-C-S750M0
SHIX-96X836XXXX	35978-C-S500M0
SHIX-96X831XXXX	35978-C-D500M0
SHIX-A8X716XXXX	35978-C-S500M0
SHIX-A8X711XXXX	35978-C-S750M0
SHIX-A8X986XXXX	35978-C-S750M0
SHIX-A8X981XXXX	35978-C-D500M0
SHIX-A8XA26XXXX	35978-C-S750M0
SHIX-A8XA21XXXX	35978-C-D500M0
SHIX-C0XA26XXXX	35978-C-S750M0
SHIX-C0XA21XXXX	35978-C-D500M0

SHEET 1 OF 2

©Copyright 2021 Martin Engineering. All rights reserved. Covered by U.S. and foreign patents pending and issued. ® and TM indicate trademarks of Martin Engineering.

**MARTIN ENGINEERING**  
NEPONSET, IL USA

<b>TITLE</b>		SHIX PRIMARY CLEANER (SHD-1200)		DRAWN RND	DATE 08/02/06
		W/SPR LINK TENSIONER		CHECKED	
				ENG. MJB	DATE 08/02/06
				APPROVED JMM	DATE 08/03/06
				SCALE 7/32	

NO.	DESCRIPTION	ECN	DATE	BY
B	(SHT 1) CHGD P/N IN BOM FROM 35978-D150M TO SEE CHART / ADDED TENSIONER CHARTS / CHGD TENSIONER IN VIEW FROM DUAL TO SINGLE / RMVD DIM 6.50 / CHGD DIM 9.38 TO 3.92	15920	06/22/21	JAH
A	(SHT 1) RMV OPTION "E" & "F" (TENSIONERS W/EXPANSION KIT) FROM TENSIONER & ACCESSORY OPTIONS NOTE	12650	08/05/09	MJB

SALES DRAWING

ND0668 **S50039**