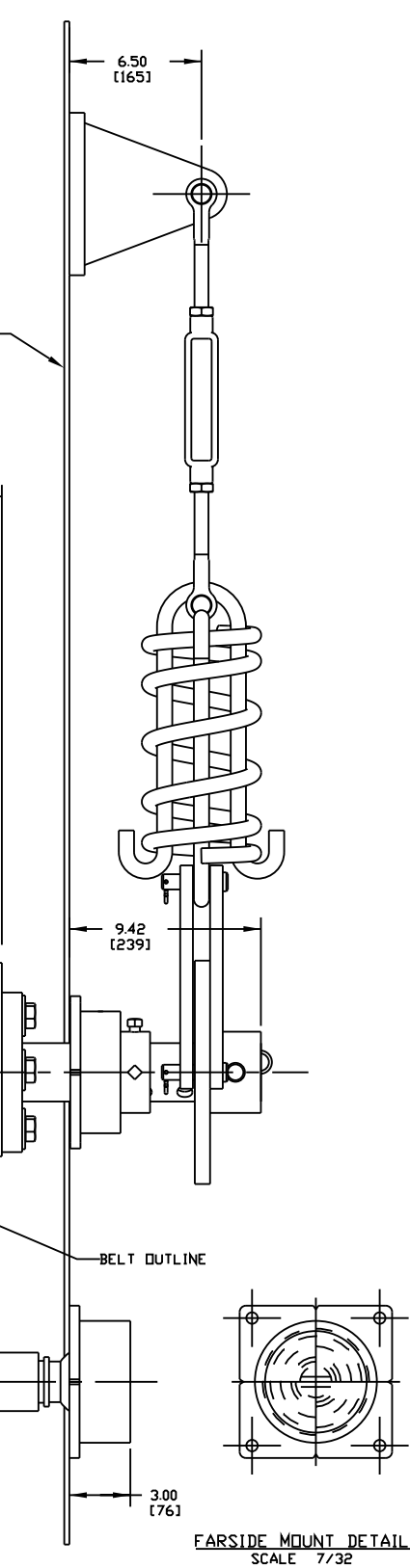
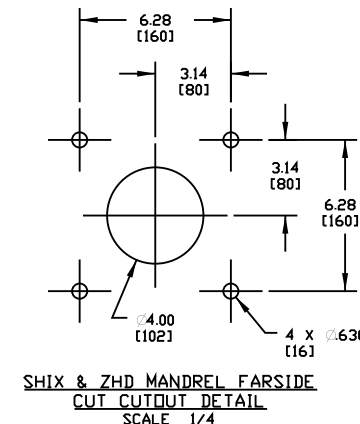
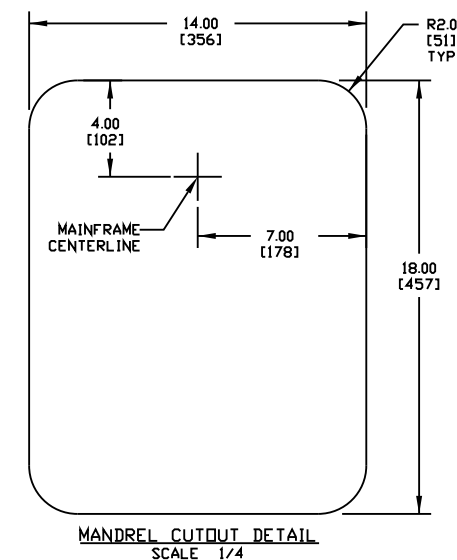
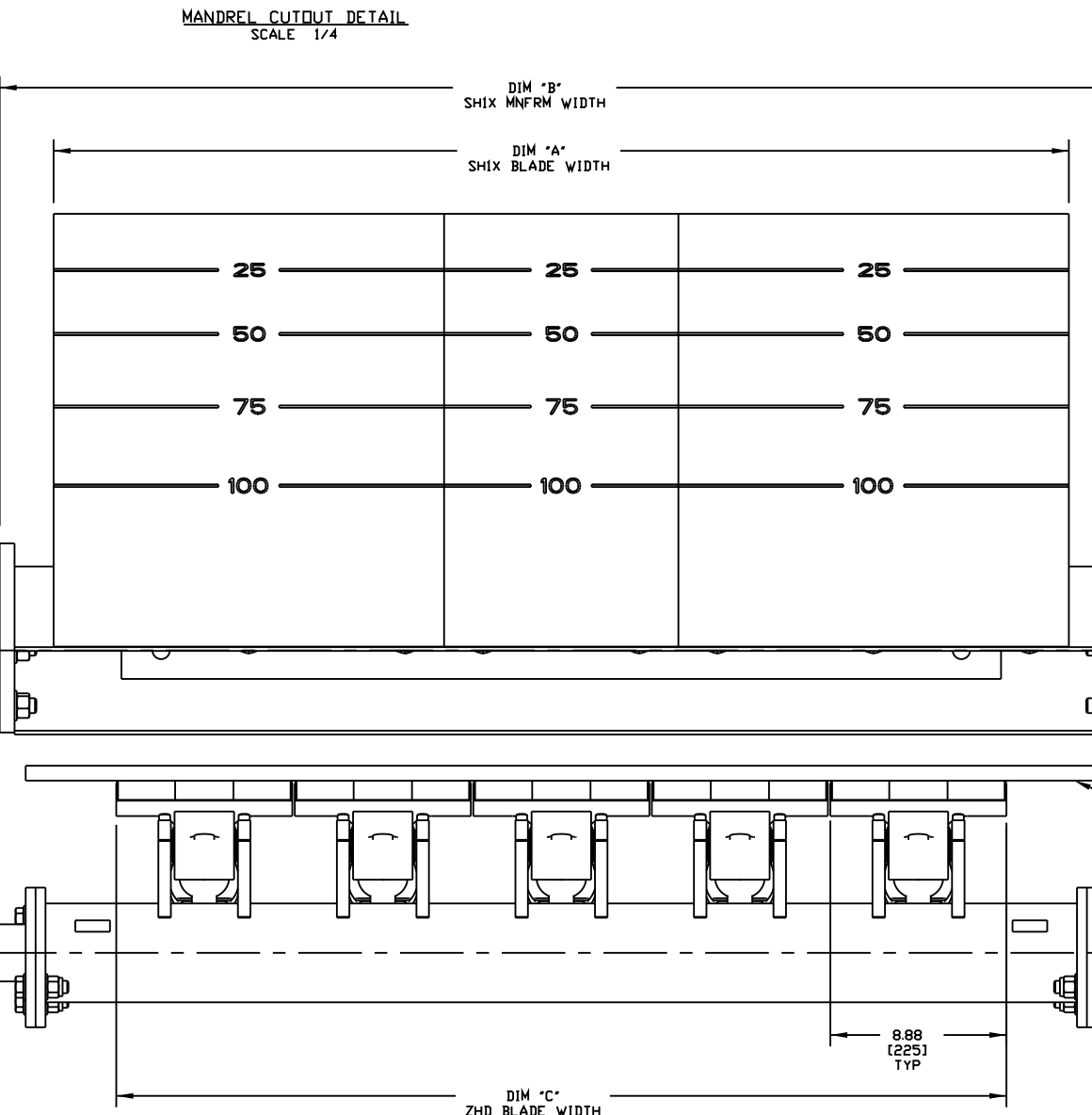
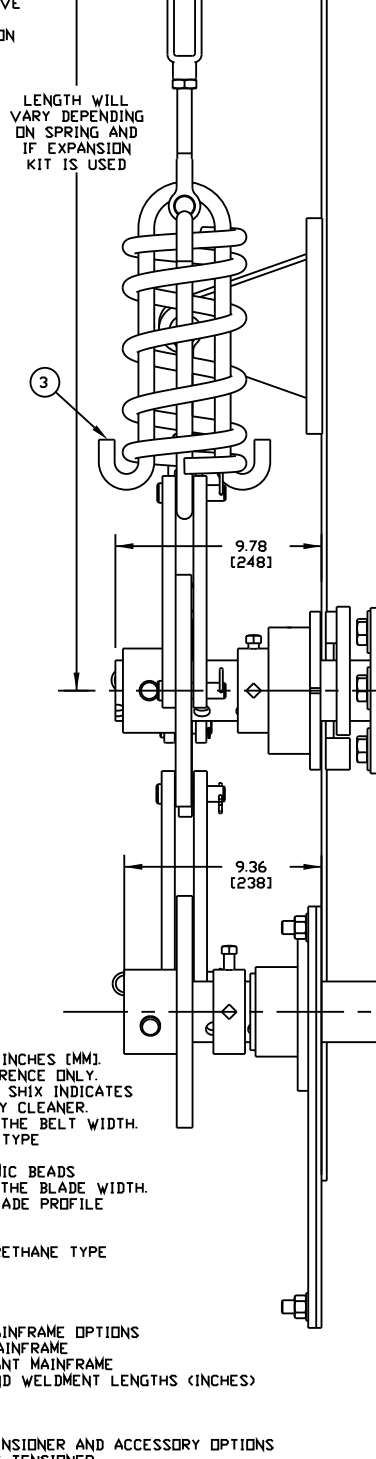
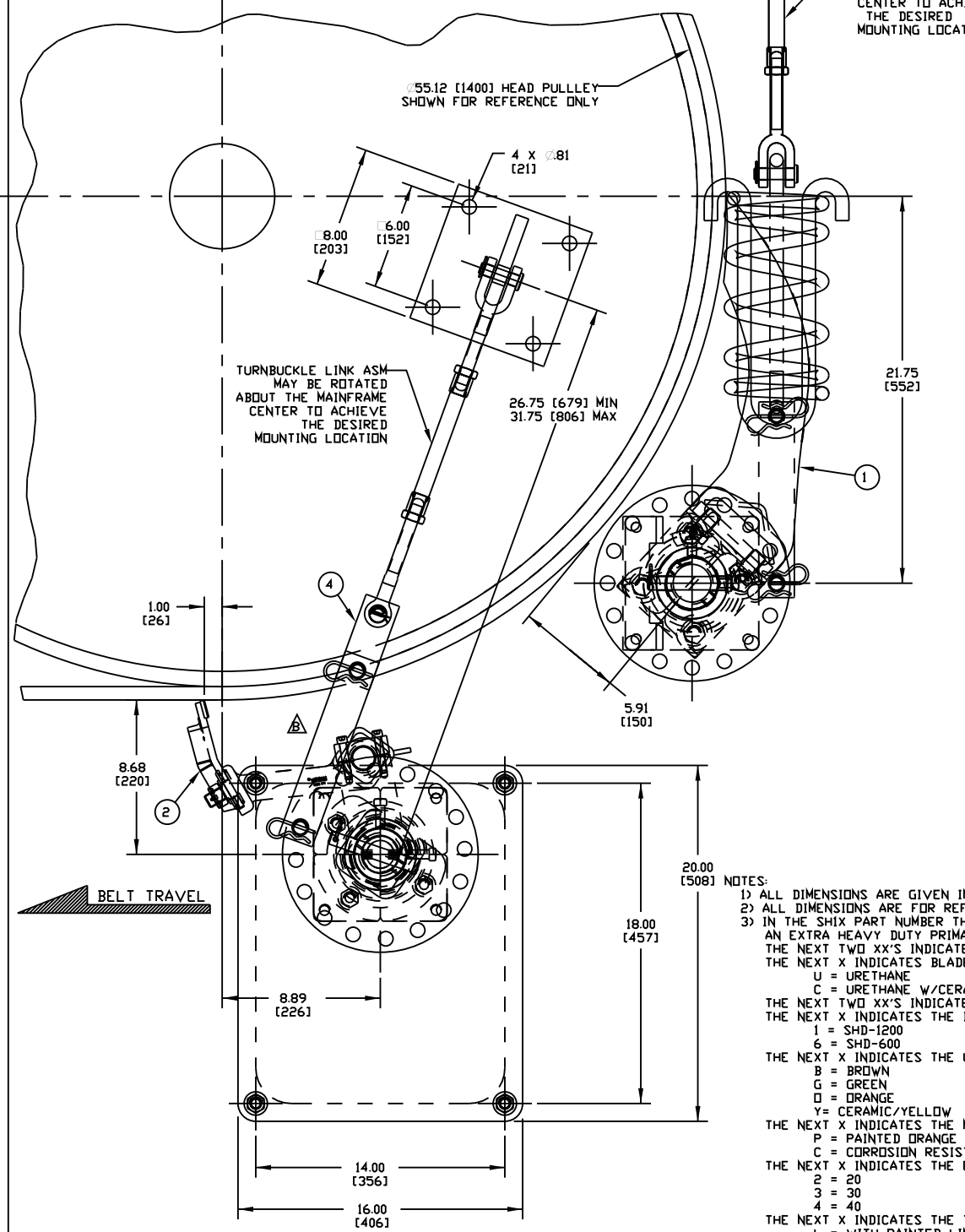


ASSEMBLY PART NUMBER	DIM "A" BLADE LENGTH	DIM "B" MNFRM LENGTH
SHIX-42X39XXXX	39.38 [1000]	44.81 [1138]
SHIX-48X43XXXX	43.31 [1100]	48.75 [1238]
SHIX-54X51XXXX	51.19 [1300]	56.63 [1438]
SHIX-60X59XXXX	59.06 [1500]	64.50 [1638]
SHIX-72X71XXXX	70.88 [1800]	76.31 [1938]
SHIX-84X79XXXX	78.75 [2000]	84.19 [2138]
SHIX-96X83XXXX	82.69 [2100]	88.13 [2239]
SHIX-ABX71XXXX	70.88 [1800]	103.88 [2639]
SHIX-ABX98XXXX	98.44 [2500]	103.88 [2639]
SHIX-C0XA2XXXX	102.38 [2600]	107.81 [2738]

PART NO.	DIM "C" BLADE WIDTH
36328-24	17.88 [454]
36328-30	26.88 [683]
36328-36	26.88 [683]
36328-42	35.88 [911]
36328-48	44.88 [1140]
36328-54	44.88 [1140]
36328-60	53.88 [1369]
36328-72	62.88 [1597]
36328-84	80.88 [2054]
36328-96	89.88 [2283]

ITEM	QTY.	DESCRIPTION	PART NUMBER
1	1	SHIX PRIMARY CLEANER ASM	SHIX-XXXXXXXXXX
2	1	ZHD SECONDARY CLEANER ASM	36328-XX
3	1	DUAL SPRING LINK TENSIONER ASM	35978-DXXMX
4	1	MANDREL MOUNT LINK TENSIONER ASM	36535-XX



NOTES:

1) ALL DIMENSIONS ARE GIVEN IN INCHES [MM].

2) ALL DIMENSIONS ARE FOR REFERENCE ONLY.

3) IN THE SHIX PART NUMBER THE SHIX INDICATES AN EXTRA HEAVY DUTY PRIMARY CLEANER. THE NEXT TWO XX'S INDICATE THE BELT WIDTH. THE NEXT X INDICATES THE BLADE TYPE

U = URETHANE  
C = URETHANE W/CERAMIC BEADS  
THE NEXT TWO XX'S INDICATE THE BLADE WIDTH. THE NEXT X INDICATES THE BLADE PROFILE

1 = SHD-1200  
6 = SHD-600  
THE NEXT X INDICATES THE URETHANE TYPE

B = BROWN  
G = GREEN  
D = DRANGE  
Y = CERAMIC/YELLOW

THE NEXT X INDICATES THE MAINFRAME OPTIONS

P = PAINTED ORANGE MAINFRAME  
C = CORROSION RESISTANT MAINFRAME  
THE NEXT X INDICATES THE END WELDMENT LENGTHS (INCHES)

2 = 20  
3 = 30  
4 = 40

THE NEXT X INDICATES THE TENSIONER AND ACCESSORY OPTIONS

L = WITH PAINTED LINK TENSIONER  
C = WITH CORROSION RESISTANT LINK TENSIONER

NOTES:

4) WHERE EXTREME OR UNUSUAL CONDITIONS EXIST, OR SPECIAL MAINFRAME LENGTHS ARE REQUIRED, CONTACT MARTIN

5) THE SHIX PRECLEANER BLADES ARE DESIGNED TO REMOVE HEAVY CARRYBACK ONLY. DO NOT OVERTENSION.

6) BLADE COVERAGE WILL BE LESS THAN BELT WIDTH DUE TO POSSIBLE MISTRACKING OR DAMAGED EDGES OF BELT.

7) REQUIRED EFFECTIVE HEAD PULLEY DIAMETERS (HEAD PULLEY + LAGGING + BELT THICKNESS) ARE 47.24 [1200] MINIMUM THRU 70.87 [1800] MAXIMUM FOR THE SHIX-1200.

8) FRAME LENGTH IS SUPPLIED LONGER THAN REQUIRED, CUT IN FIELD TO DESIRED LENGTH.

9) TENSIONER ASSEMBLY MAY BE BOLTED OR WELDED IN PLACE. MARTIN ENGINEERING RECOMMENDS BOLTING WHEN APPLICABLE FOR EASIER MAINTENANCE AND ACCESSIBILITY.

10) REFER TO OPERATOR'S MANUAL'S, FOR INSTALLATION AND TENSIONING INSTRUCTIONS.

11) CLEANERS ARE SHOWN IN RECOMMENDED POSITIONS.

Copyright 2004 Martin Engineering. All rights reserved. Covered by U.S. and Foreign patents pending and issued. ® and TM indicate trademarks of Martin Engineering.

MARTIN ENGINEERING-USA  
NEPONSET, IL USA

TITLE	SHIX PRIMARY CLEANER AND ZHD SECONDARY CLEANER SPR LINK/MANDREL TENS	DRAWN	RND
DATE	05/26/05	CHECKED	
ENG.	MJB	DATE	05/27/05
APPROVED	JMM	DATE	05/27/05
SCALE	7/32		

SALES DRAWING

M00630 S50025

NO.	DESCRIPTION	ECN	DATE	BY
B	ROTATED AND RELOCATED TURNBUCKLE TO SECONDARY CLEANER (M00630)	-----	04/21/10	RND
A	TRAVEL OPTION "E" & "F" (TENSIONERS W/EXPANSION KIT) FROM THE TENSIONER AND ACCESSORY OPTIONS NOTE	12650	06/04/09	MJB

