

The drawing is the confidential information of Marsh Engineering Company and cannot be shared with any third party without Marsh Engineering Company's express prior written consent.

PART NUMBER	DIM "A"	DIM "B"	ITEM 1	ITEM 2	ITEM 3	ITEM 4	ITEM 5	ITEM 6	ITEM 7	ITEM 8	ITEM 9
UBUS265XXXX	608.6 (24.00)	2419.3 (100.12)	UBPS265X	UBPS265X	UBPS265X	UBPS265X	UBPS265X	UBPS265X	UBPS265X	UBPS265X	UBPS265X
UBUS306XXXX	608.6 (24.00)	2419.3 (100.12)	UBPS306X	UBPS306X	UBPS306X	UBPS306X	UBPS306X	UBPS306X	UBPS306X	UBPS306X	UBPS306X
UBUS350XXXX	608.6 (24.00)	2419.3 (100.12)	UBPS350X	UBPS350X	UBPS350X	UBPS350X	UBPS350X	UBPS350X	UBPS350X	UBPS350X	UBPS350X
UBUS400XXXX	608.6 (24.00)	2419.3 (100.12)	UBPS400X	UBPS400X	UBPS400X	UBPS400X	UBPS400X	UBPS400X	UBPS400X	UBPS400X	UBPS400X
UBUS450XXXX	608.6 (24.00)	2419.3 (100.12)	UBPS450X	UBPS450X	UBPS450X	UBPS450X	UBPS450X	UBPS450X	UBPS450X	UBPS450X	UBPS450X
UBUS500XXXX	608.6 (24.00)	2419.3 (100.12)	UBPS500X	UBPS500X	UBPS500X	UBPS500X	UBPS500X	UBPS500X	UBPS500X	UBPS500X	UBPS500X
UBUS550XXXX	608.6 (24.00)	2419.3 (100.12)	UBPS550X	UBPS550X	UBPS550X	UBPS550X	UBPS550X	UBPS550X	UBPS550X	UBPS550X	UBPS550X
UBUS600XXXX	608.6 (24.00)	2419.3 (100.12)	UBPS600X	UBPS600X	UBPS600X	UBPS600X	UBPS600X	UBPS600X	UBPS600X	UBPS600X	UBPS600X
UBUS650XXXX	608.6 (24.00)	2419.3 (100.12)	UBPS650X	UBPS650X	UBPS650X	UBPS650X	UBPS650X	UBPS650X	UBPS650X	UBPS650X	UBPS650X
UBUS700XXXX	608.6 (24.00)	2419.3 (100.12)	UBPS700X	UBPS700X	UBPS700X	UBPS700X	UBPS700X	UBPS700X	UBPS700X	UBPS700X	UBPS700X

PART NUMBER	ITEM 1	ITEM 2	ITEM 3	ITEM 4	ITEM 5	ITEM 6	ITEM 7	ITEM 8	ITEM 9
UBUS265XXXX	3	14	7	36.9 (1.41)					
UBUS306XXXX	3	14	7	36.9 (1.41)					
UBUS350XXXX	3	14	7	40.6 (1.60)					
UBUS400XXXX	3	14	7	44.4 (1.75)					
UBUS450XXXX	5	18	9	44.4 (1.75)					
UBUS500XXXX	5	18	9	48.0 (1.90)					
UBUS550XXXX	5	18	9	48.0 (1.90)					
UBUS600XXXX	7	22	11	51.0 (1.97)					
UBUS650XXXX	7	22	11	55.1 (2.17)					
UBUS700XXXX	9	26	13	59.2 (2.33)					
UBUS725XXXX	11	30	15	66.6 (2.62)					

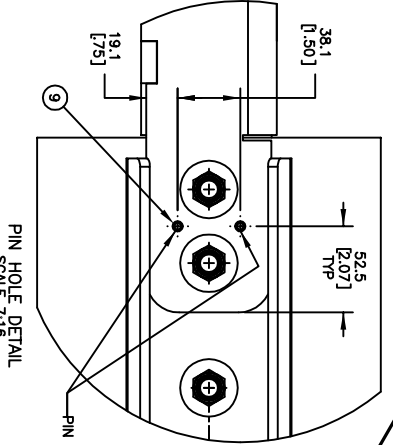
PART NUMBER	P/N	COLOR
UBUSXXXXXX	UBS10	ORANGE
UBUSXXXXXX	UBS18	BROWN
UBUSXXXXXX	UBS19	BROWN
UBUSXXXXXX	UBS20	GREEN

ITEM	QTY.	DESCRIPTION	PART NUMBER
1	1	URETHANE BLADE	SEE CHART
2	1	BACK PLATE	SEE CHART
3	1	FRONT PLATE	SEE CHART
4	2	FRAME END WELDMENT	SEE CHART
5	4	SOREN HHC 1/2-13NC X 4-1/2	SEE CHART
6	4	SOREN HHC 1/2-13NC X 3-1/2	SEE CHART
7	4	SOREN HHC 1/2-13NC X 3-1/2	SEE CHART
8	4	WASHER FLAT 1/2 WIDE	SEE CHART
9	4	NUT HEX ELASTIC LOCK 1/2-13NC	SEE CHART
10	1	TENSIONER ASSEMBLY	SEE TENS CHART
11	1	COVER DOOR ASSEMBLY	SEE CHART
12	1	MANUAL OPERATORS	M4207
13	2	PLUG FOR 2.50 SQ. TUBE	34898-02
14	2	LABEL MARTIN PRODUCT	39048

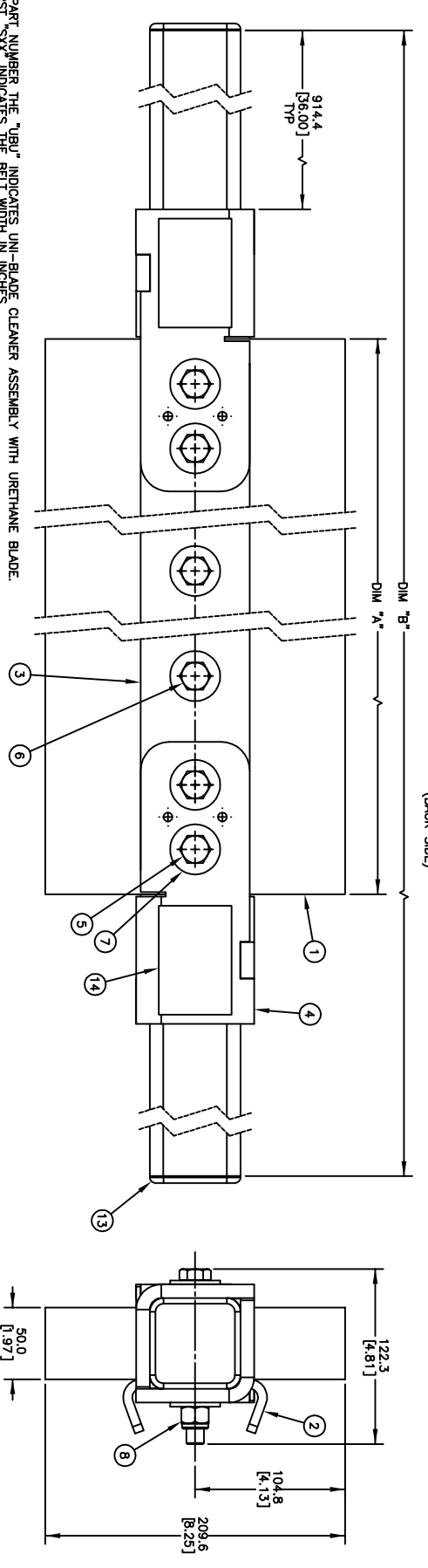
S/C = SEE CHART
NS = NOT SHOWN

PART NUMBER	P/N 2	P/N 3	P/N 4	P/N 5	P/N 6	P/N 7	P/N 8	P/N 9
UBUS265XXXX	UBPS265X	UBPS265X	UBPS265X	UBPS265X	UBPS265X	UBPS265X	UBPS265X	UBPS265X
UBUS306XXXX	UBPS306X	UBPS306X	UBPS306X	UBPS306X	UBPS306X	UBPS306X	UBPS306X	UBPS306X
UBUS350XXXX	UBPS350X	UBPS350X	UBPS350X	UBPS350X	UBPS350X	UBPS350X	UBPS350X	UBPS350X
UBUS400XXXX	UBPS400X	UBPS400X	UBPS400X	UBPS400X	UBPS400X	UBPS400X	UBPS400X	UBPS400X
UBUS450XXXX	UBPS450X	UBPS450X	UBPS450X	UBPS450X	UBPS450X	UBPS450X	UBPS450X	UBPS450X
UBUS500XXXX	UBPS500X	UBPS500X	UBPS500X	UBPS500X	UBPS500X	UBPS500X	UBPS500X	UBPS500X
UBUS550XXXX	UBPS550X	UBPS550X	UBPS550X	UBPS550X	UBPS550X	UBPS550X	UBPS550X	UBPS550X
UBUS600XXXX	UBPS600X	UBPS600X	UBPS600X	UBPS600X	UBPS600X	UBPS600X	UBPS600X	UBPS600X
UBUS650XXXX	UBPS650X	UBPS650X	UBPS650X	UBPS650X	UBPS650X	UBPS650X	UBPS650X	UBPS650X
UBUS700XXXX	UBPS700X	UBPS700X	UBPS700X	UBPS700X	UBPS700X	UBPS700X	UBPS700X	UBPS700X

TENSIONER CHART	
PART NUMBER	P/N
UBUSXXXXXX	UBT
UBUSXXXXXX	UBTF



ISOMETRIC VIEW
SCALE 1:8
P/N UBUSZFXXXX SHOWN



PIN HOLE DETAIL
SCALE 7/16

COVER DOOR CHART

NOTES:
1) IN THE PART NUMBER THE "UB" INDICATES UN-BLADE CLEANER ASSEMBLY WITH URETHANE BLADE.
THE FIRST "SX" INDICATES THE BELT WIDTH IN INCHES.
THE NEXT "SX" INDICATES THE BELT COVERAGE IN INCHES.
SE = 6.00" BESS BELT WIDTH (SEE NOTE 2).
SO = 6.00" BESS BELT WIDTH (NOT AVAILABLE ON 24.00" & 29.00" BELT WIDTHS)
O = INDICATES THE BELT COLOR OPTIONS:
B = BROWN
G = GREEN
R = RED
C = COVERDOOR
F = 316 STAINLESS STEEL
T = 316 STAINLESS STEEL
N = NO COVER DOOR
S = 316 STAINLESS STEEL COVER DOOR
X = INDICATES THE DOOR OPTIONS:
D = STEEL COVER DOOR
N = NO COVER DOOR
E = 316 STAINLESS STEEL COVER DOOR
C = COVERDOOR

THE NEXT "X" INDICATES THE FRAME OPTIONS:
F = 316 STAINLESS STEEL
T = 316 STAINLESS STEEL
N = NO COVER DOOR
S = 316 STAINLESS STEEL COVER DOOR
E = 316 STAINLESS STEEL COVER DOOR

2) AFTER ASSEMBLING USE THE EXISTING \varnothing 6.4 [25] HOLES ON END WELDMENT AS PILOT HOLES TO DRILL 2 X \varnothing 6.15 [242] HOLES THROUGH THE SIDE PLATE (P/N UBPSFXXX), TYPICAL EACH END. AFTER DRILLING INSERT THE SLOTTED SPRING PINS INTO PIN HOLES.

REV	DESCRIPTION	DATE	BY
1	MATERIAL: SEE NOTES		
2	FINISH: SEE NOTES		
3	TOLERANCES: IN MM [INCH]		
4	SURFACE FINISH: ANGULAR: 4 DRAFT ANGLE: -		

Copyright 2024 Marsh Engineering. All rights reserved. Created by U.S. and foreign patents pending and issued. ® and TM indicate trademarks of Marsh Engineering.

MARTIN ENGINEERING
NEPONSET, IL USA

DATE: 11/25/24

DRAWN: JWH

CHECKED:

DATE: 11/25/24

UNI-BLADE CLEANER ASSEMBLY WITH URETHANE BLADE

PART NUMBER: UBUSXXXXXX

SCALE: 7:16

DATE: 11/25/24

APPROVED: 9/28

DATE: 11/25/24