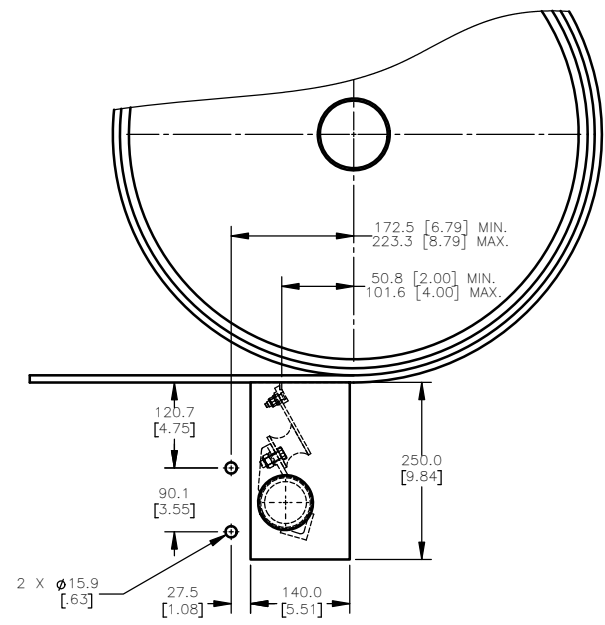


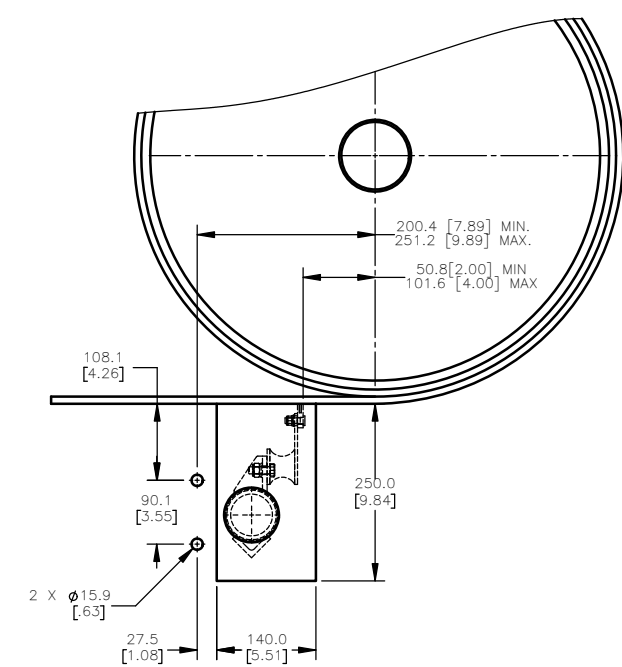
PART NUMBER	BELT WIDTH	DIM "A"	DIM "B"	NO. OF BLADES
C2PH1S1801XXXX	457.2 [18.00]	1676.4 [66.000]	200.0 [7.87]	1
C2PH1S1802XXXX	457.2 [18.00]	1676.4 [66.000]	400.0 [7.87]	2
C2PH1S2402XXXX	609.6 [24.00]	1828.8 [72.00]	400.0 [7.87]	2
C2PH1S2403XXXX	609.6 [24.00]	1828.8 [72.00]	600.0 [23.62]	3
C2PH1S3003XXXX	762.0 [30.00]	1981.2 [78.00]	600.0 [23.62]	3
C2PH1S3004XXXX	762.0 [30.00]	1981.2 [78.00]	800.0 [31.50]	4
C2PH1S3603XXXX	914.4 [36.00]	2133.6 [84.00]	600.0 [23.62]	3
C2PH1S3604XXXX	914.4 [36.00]	2133.6 [84.00]	800.0 [31.50]	4
C2PH1S4204XXXX	1066.8 [42.00]	2286.0 [90.00]	800.0 [31.50]	4
C2PH1S4205XXXX	1066.8 [42.00]	2286.0 [90.00]	1000.0 [39.37]	5
C2PH1S4805XXXX	1219.2 [48.00]	2438.4 [96.00]	1000.0 [39.37]	5
C2PH1S4806XXXX	1219.2 [48.00]	2438.4 [96.00]	1200.0 [47.24]	6
C2PH1S5405XXXX	1371.6 [54.00]	2590.8 [102.00]	1000.0 [39.37]	5
C2PH1S5406XXXX	1371.6 [54.00]	2590.8 [102.00]	1200.0 [47.24]	6
C2PH1S6006XXXX	1524.0 [60.00]	2743.2 [108.00]	1200.0 [47.24]	6
C2PH1S6007XXXX	1524.0 [60.00]	2743.2 [108.00]	1400.0 [55.12]	7
C2PH1S6607XXXX	1676.4 [66.00]	2895.6 [114.00]	1400.0 [55.12]	7
C2PH1S6608XXXX	1676.4 [66.00]	2895.6 [114.00]	1600.0 [63.00]	8
C2PH1S7208XXXX	1828.8 [72.00]	3048.0 [120.00]	1600.0 [63.00]	8
C2PH1S7209XXXX	1828.8 [72.00]	3048.0 [120.00]	1800.0 [70.89]	9
C2PH1S7809XXXX	1981.2 [78.00]	3200.4 [126.00]	1800.0 [70.89]	9
C2PH1S7810XXXX	1981.2 [78.00]	3200.4 [126.00]	2000.0 [78.74]	10
C2PH1S8409XXXX	2133.6 [84.00]	3352.8 [132.00]	1800.0 [70.89]	9
C2PH1S8410XXXX	2133.6 [84.00]	3352.8 [132.00]	2000.0 [78.74]	10
C2PH1S9010XXXX	2286.0 [90.00]	3505.2 [138.00]	2000.0 [78.74]	10
C2PH1S9011XXXX	2286.0 [90.00]	3505.2 [138.00]	2200.0 [86.61]	11
C2PH1S9611XXXX	2438.4 [96.00]	3657.6 [144.00]	2200.0 [86.61]	11
C2PH1S9612XXXX	2438.4 [96.00]	3657.6 [144.00]	2400.0 [94.49]	12
C2PH1SA212XXXX	2590.8 [102.00]	3810.0 [150.00]	2400.0 [94.49]	12
C2PH1SA213XXXX	2590.8 [102.00]	3810.0 [150.00]	2600.0 [102.36]	13

EXTENDED MAINFRAME CHART	
PART NUMBER	DIM "A"
C2PH1S1801XXEX	1676.4 [66.00]
C2PH1S1802XXEX	1676.4 [66.00]
C2PH1S2402XXEX	1828.8 [72.00]
C2PH1S2403XXEX	1828.8 [72.00]
C2PH1S3003XXEX	1981.2 [78.00]
C2PH1S3004XXEX	1981.2 [78.00]
C2PH1S3603XXEX	2133.6 [84.00]
C2PH1S3604XXEX	2133.6 [84.00]
C2PH1S4204XXEX	2286.0 [90.00]
C2PH1S4205XXEX	2286.0 [90.00]
C2PH1S4805XXEX	2438.4 [96.00]
C2PH1S4806XXEX	2438.4 [96.00]
C2PH1S5405XXEX	2590.8 [102.00]
C2PH1S5406XXEX	2590.8 [102.00]
C2PH1S6006XXEX	2743.2 [108.00]
C2PH1S6007XXEX	2743.2 [108.00]
C2PH1S6607XXEX	2895.6 [114.00]
C2PH1S6608XXEX	2895.6 [114.00]
C2PH1S7208XXEX	3048.0 [120.00]
C2PH1S7209XXEX	3048.0 [120.00]
C2PH1S7808XXEX	3200.4 [126.00]
C2PH1S7809XXEX	3200.4 [126.00]
C2PH1S8409XXEX	3352.8 [132.00]
C2PH1S8410XXEX	3352.8 [132.00]
C2PH1S9010XXEX	3505.2 [138.00]
C2PH1S9011XXEX	3505.2 [138.00]
C2PH1S9611XXEX	3657.6 [144.00]
C2PH1S9612XXEX	3657.6 [144.00]
C2PH1SA212XXEX	3810.0 [150.00]
C2PH1SA213XXEX	3810.0 [150.00]

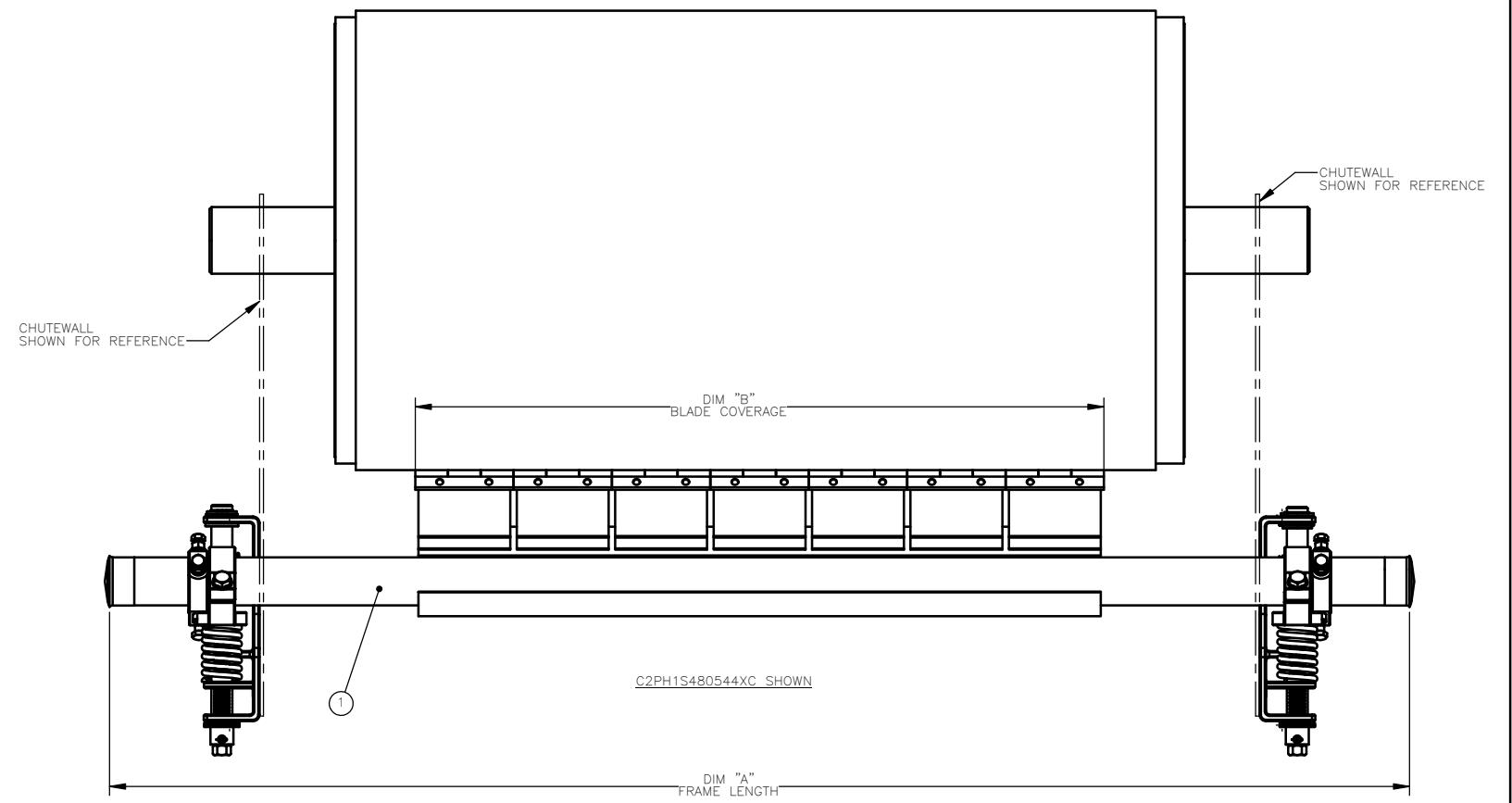
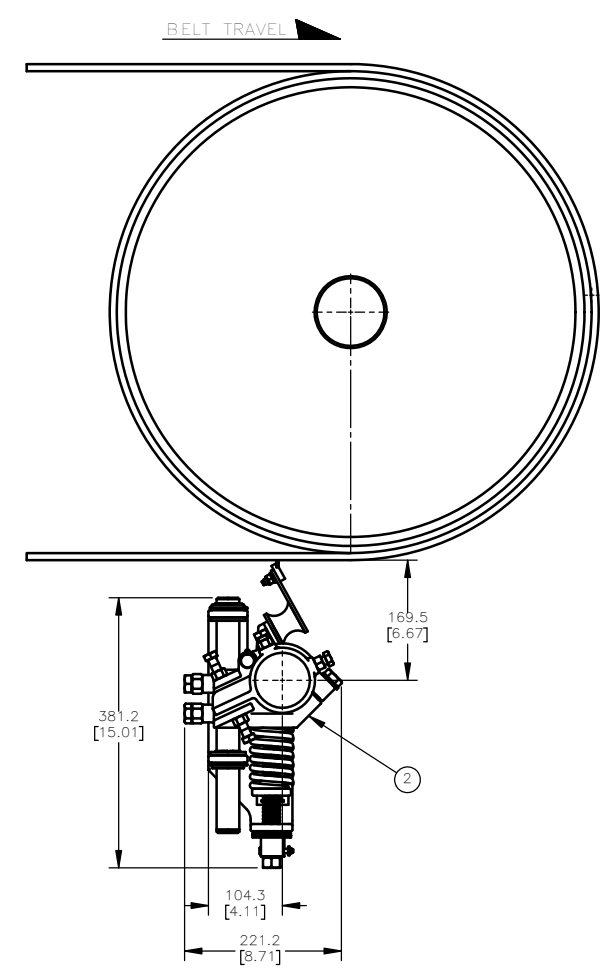
USE P/N C2PH1SXXXXXXZ FOR 304 SS EXTENDED MAINFRAMES



CHUTEWALL CUTOUT DETAIL WITH 10 X 3 & 15 X 5 TIP SCALE 1:4



CHUTEWALL CUTOUT DETAIL WITH C TIP SCALE 1:4



NOTES:

- 1) IN THE PART NUMBER, THE PREFIX C2PH1 REFERS TO  
C = CONVEYOR PRODUCT  
2 = SECONDARY CLEANER  
P = P2 STYLE  
H = HEAVY DUTY MAINFRAME  
1 = 1 PIECE MAINFRAME  
THE "SXX" INDICATES BELT WIDTH IN INCHES (18 THRU 102)  
THE NEXT "XX" INDICATES NUMBER OF TIPS  
THE NEXT "X" INDICATES TIP TYPE  
4 = V TIP 10X3  
5 = V TIP 15X5  
C = C TIP  
N = NONE  
THE NEXT "X" INDICATES BUFFER TYPE  
5 = 55A SS  
7 = 70A SS  
N = NONE  
THE NEXT "X" INDICATES MAINFRAME MATERIAL  
P = PAINTED STEEL  
E = EXTENDED PAINTED STEEL  
F = 304 SS  
Z = 304 SS EXTENDED  
THE NEXT "X" INDICATES TENSIONER  
C = COMPRESSION SPRING TENSIONER
- 2) THE EXTENDED MAINFRAME IS 457.2 MM (18 IN.) LONGER THAN STANDARD MAINFRAMES.
- 3) ENSURE THE BLADE TIP & MAINFRAME ARE OUT OF THE PATH OF MATERIAL TRAJECTORY.
- 4) CLEANER IS SHOWN IN RECOMMENDED WORKING POSITION.
- 5) WHERE EXTREME OR UNUSUAL CONDITIONS EXIST, CONTACT MARTIN ENGINEERING.
- 6) REFER TO OPERATOR'S MANUAL M4228 FOR COMPLETE INSTALLATION INSTRUCTIONS.

ITEM	QTY	DESCRIPTION	PART NUMBER
1	1	MARTIN P2 SECONDARY ASSEMBLY	SEE CHART
2	1	P2 COMPRESSION SPRING TENSIONER	B34-10-005

Copyright 2026 Martin Engineering. All rights reserved. Covered by U.S. and foreign patents pending and issued. ® and TM indicate trademarks of Martin Engineering.

**MARTIN ENGINEERING**  
NEPONSET, IL USA

DRAWN: JRB  
DATE: 03/31/26  
CHECKED:  
ENG: JRB  
DATE: 04/17/26  
I.E.: JRB  
DATE: 04/21/26  
APPROVED: JRB  
DATE: 04/21/26  
SCALE: 3:16

TITLE: MARTIN P2 HD SECONDARY HD BELT CLEANER WITH COMPRESSION SPRING TENSIONER

DRAWING NUMBER: PR14890D S50157-C

REV	DESCRIPTION	ECN	DATE	BY

MATERIAL: FINISH: WEIGHT: SURFACE FINISH: UNLESS OTHERWISE SPECIFIED TOLERANCES IN MM [INCH]: .X = ± .XX = ± .XXX = ± ANGULAR: ±1 DRAFT ANGLE: - DIMENSIONS ARE IN MM [INCH] DIMENSIONS FOR REFERENCE ONLY

SOLIDWORKS