

PART NUMBER	BELT WIDTH	DIM "A"	DIM "B"	NO. OF BLADES
C1HH1XS1801XXXX	457.2 [18.00]	1676.4 [66.000]	200.0 [7.87]	1
C1HH1XS1802XXXX	457.2 [18.00]	1676.4 [66.000]	400.0 [7.87]	2
C1HH1XS2402XXXX	609.6 [24.00]	1828.8 [72.00]	400.0 [7.87]	2
C1HH1XS2403XXXX	609.6 [24.00]	1828.8 [72.00]	600.0 [23.62]	3
C1HH1XS3003XXXX	762.0 [30.00]	1981.2 [78.00]	600.0 [23.62]	3
C1HH1XS3004XXXX	762.0 [30.00]	1981.2 [78.00]	800.0 [31.50]	4
C1HH1XS3603XXXX	914.4 [36.00]	2133.6 [84.00]	600.0 [23.62]	3
C1HH1XS3604XXXX	914.4 [36.00]	2133.6 [84.00]	800.0 [31.50]	4
C1HH1XS4204XXXX	1066.8 [42.00]	2286.0 [90.00]	800.0 [31.50]	4
C1HH1XS4205XXXX	1066.8 [42.00]	2286.0 [90.00]	1000.0 [39.37]	5

EXTENDED MAINFRAME CHART	
PART NUMBER	DIM "A"
C1HH1XS1801XXEX	1981.2 [78.00]
C1HH1XS1802XXEX	1981.2 [78.00]
C1HH1XS2402XXEX	2133.6 [84.00]
C1HH1XS2403XXEX	2133.6 [84.00]
C1HH1XS3003XXEX	2286.0 [90.00]
C1HH1XS3004XXEX	2286.0 [90.00]
C1HH1XS3603XXEX	2438.4 [96.00]
C1HH1XS3604XXEX	2438.4 [96.00]
C1HH1XS4204XXEX	2590.8 [102.00]
C1HH1XS4205XXEX	2590.8 [102.00]

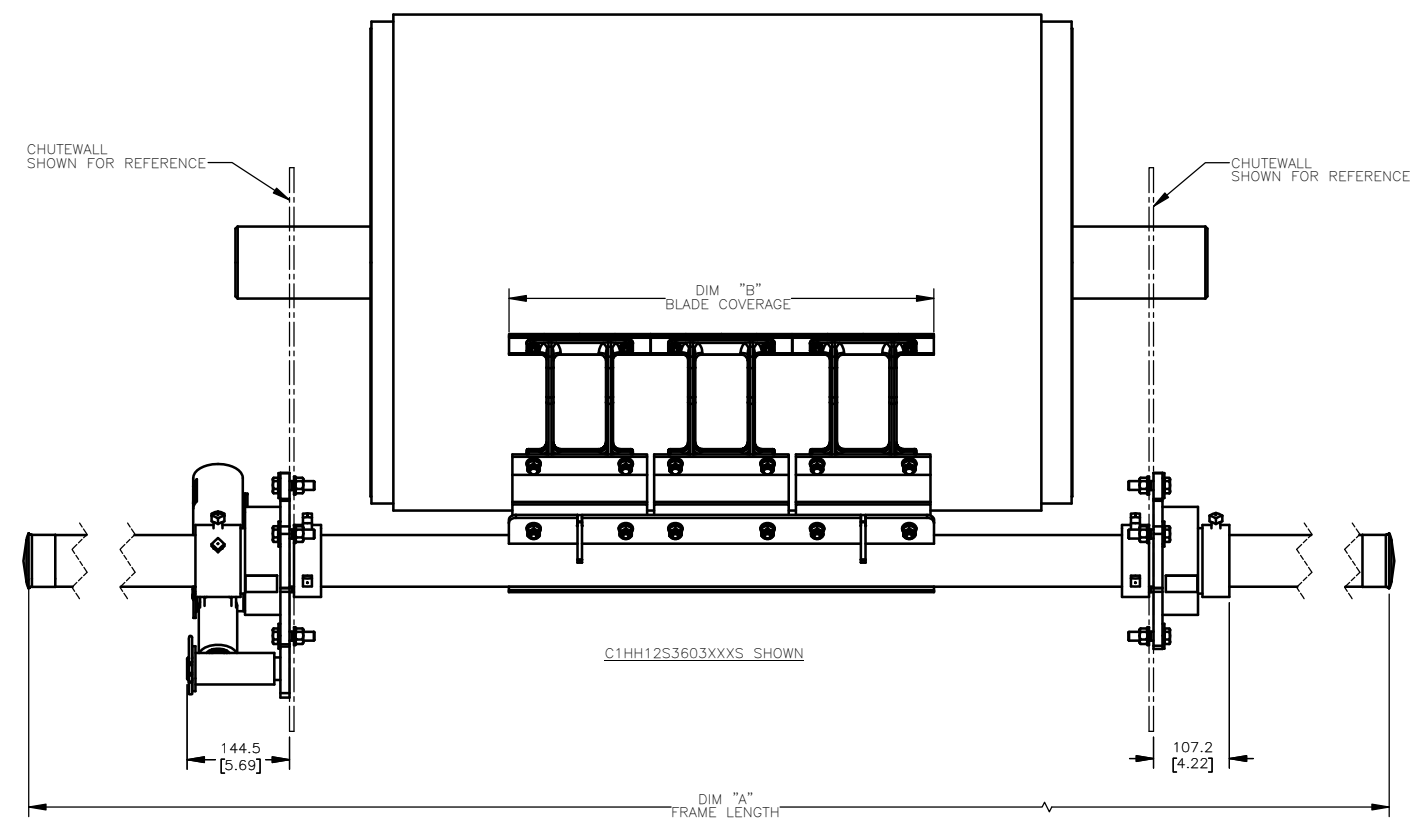
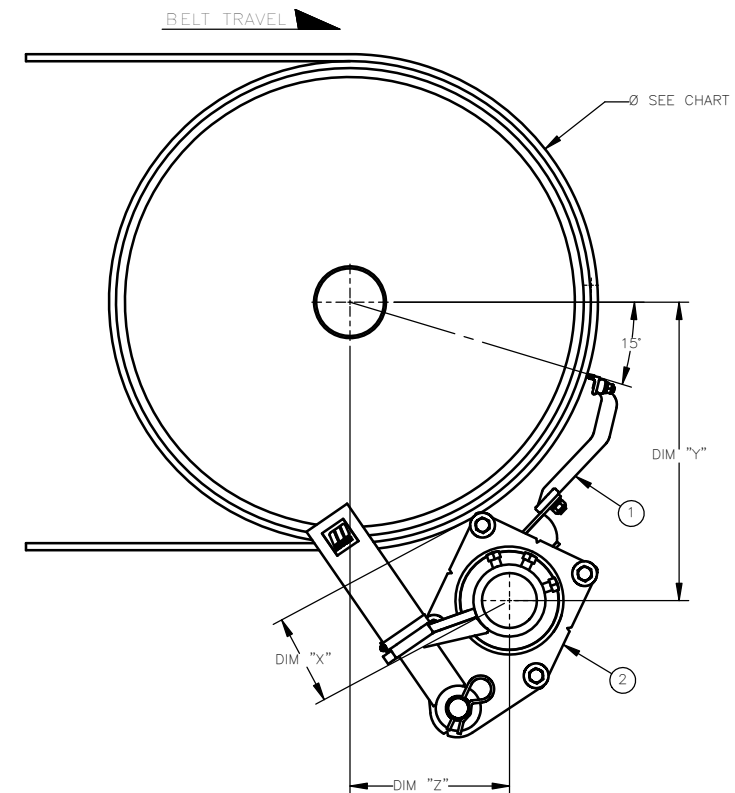
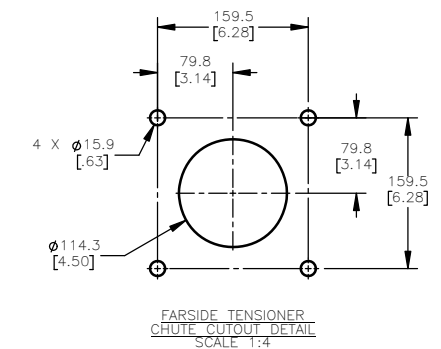
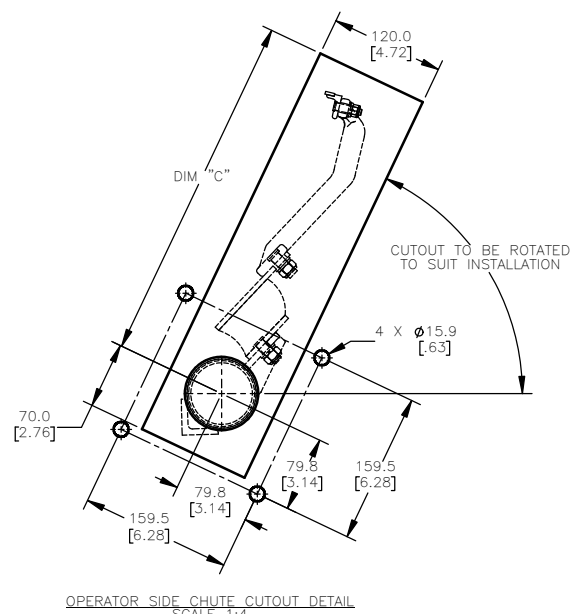
USE P/N C1HH1XSXXXXXZ FOR 304 SS EXTENDED MAINFRAMES

CHUTE CUTOUT DETAILS	
ARM SIZE	OPERATOR SIDE DIM "C"
SS	320 [12.6]
S	370 [14.6]
M	480 [18.7]
L	490 [19.3]
LL	580 [22.8]

ITEM	QTY	DESCRIPTION	PART NUMBER
1	1	MARTIN H1 PRIMARY ASSEMBLY	SEE CHART
2	1	MARTIN UNIVERSAL SPRING TENSIONER	38003

MOUNTING LOCATION CHART

ARM SIZE	PULLEY DIA+LAGGING + BELT THICKNESS		X		Y		Z	
	MM	IN	MM	IN	MM	IN	MM	IN
SS	250	9.8	185	7.3	308	12.1	31	1.2
	300	11.8	170	6.7	315	12.4	55	2.2
	350	13.8	156	6.1	321	12.6	79	3.1
	400	15.7	144	5.7	328	12.9	103	4.1
	450	17.7	132	5.2	334	13.1	127	5.0
S	500	19.7	123	4.8	341	13.4	151	5.9
	600	23.6	167	6.6	396	15.6	129	5.1
	700	27.6	146	5.7	409	16.1	177	7.0
M	800	31.5	113	4.4	434	17.1	273	10.7
	700	27.6	162	6.4	467	18.4	210	8.3
	800	31.5	145	5.7	480	18.9	258	10.2
L	900	35.4	130	5.1	493	19.4	306	12.0
	1000	39.4	118	4.6	506	19.9	355	14.0
	1000	39.4	124	4.9	529	20.8	350	13.8
LL	1100	43.3	111	4.4	542	21.3	378	14.9
	1200	47.2	100	3.9	555	21.9	427	16.8
	1200	47.2	189	7.4	669	26.3	418	16.5
LL	1300	51.2	176	6.9	682	26.9	466	18.3
	1400	55.1	164	6.5	695	27.4	514	20.2
	1500	59.1	154	6.1	708	27.9	562	22.1
	1600	63.0	145	5.7	721	28.4	611	24.1
	1700	66.9	136	5.4	734	28.9	659	25.9



- NOTES:
- IN THE PART NUMBER, THE PREFIX C1HH1 REFERS TO
C = CONVEYOR PRODUCT
1 = PRIMARY CLEANER
H = H1 STYLE
H = HEAVY DUTY MAINFRAME
1 = 1 PIECE MAINFRAME
THE NEXT "X" INDICATES ARM TYPE
1 = SS
2 = S
3 = M
4 = L
5 = LL
N = NONE
THE "SXX" INDICATES BELT WIDTH IN INCHES (18 THRU 102)
THE NEXT "XX" INDICATES NUMBER OF TIPS
THE NEXT "X" INDICATES TIP TYPE
1 = 10X3
2 = 15X5
N = NONE
THE NEXT "X" INDICATES BUFFER TYPE
5 = 55A SS
7 = 70A SS
N = NONE
THE NEXT "X" INDICATES MAINFRAME MATERIAL
P = PAINTED STEEL
E = EXTENDED PAINTED STEEL
F = 304 SS
7 = 304 SS EXTENDED
THE NEXT "X" INDICATES TENSIONER
S = SPRING TENSIONER
 - THE EXTENDED MAINFRAME IS 305M (12 IN.) LONGER THAN STANDARD MAINFRAMES.
 - ENSURE THE BLADE TIP & MAINFRAME ARE OUT OF THE PATH OF MATERIAL TRAJECTORY. CLEANER IS SHOWN IN RECOMMENDED WORKING POSITION.
 - WHERE EXTREME OR UNUSUAL CONDITIONS EXIST, CONTACT MARTIN ENGINEERING.
 - REFER TO OPERATOR'S MANUAL M4226 FOR COMPLETE INSTALLATION INSTRUCTIONS.
 - FOR BELT WIDTHS [48.00] AND LARGER, MARTIN ENGINEERING RECOMMENDS USING A DUAL SPRING TENSIONER.

REV	DESCRIPTION	ECN	DATE	BY

UNLESS OTHERWISE SPECIFIED, TOLERANCES IN MM [INCH]: SURFACE FINISH: DIMENSIONS ARE IN MM [INCH] .X = ±.1 .XX = ±.05 .XXX = ±.025 ANGULAR: ±1 DRAFT ANGLE: -

TITLE	MARTIN H1 HD PRIMARY BELT CLEANER WITH UNIVERSAL SPRING TENSIONER	ENG. DATE	04/17/26
DRAWING NUMBER	PR14890D	CHECKED	JRB
DRAWN	JRB	DATE	03/31/26
DATE	04/21/26	APPROVED	JRB
SCALE	3:16		