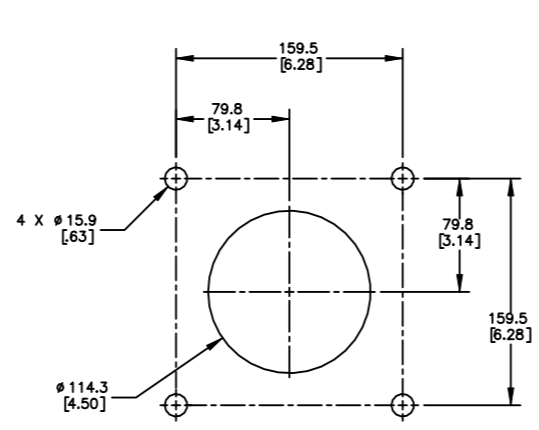
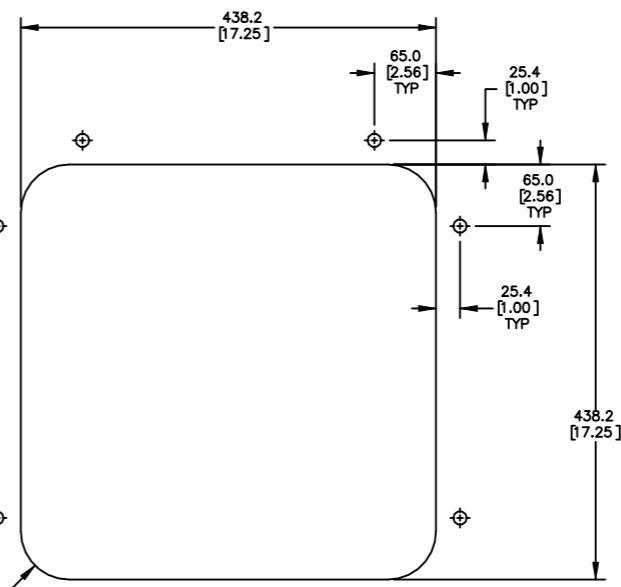


PART NUMBER	BELT WIDTH	DIM "A" MAX FRAME LENGTH	DIM "B" BLADE COVERAGE
C1QCG1S18S6XXPX	400-500 [18.00]	1676.4 [66.00]	304.8 [12.00]
C1QCG1S18S8XXPX	400-500 [18.00]	1676.4 [66.00]	254.0 [10.00]
C1QCG1S18SXXPX	400-500 [18.00]	1676.4 [66.00]	152.4 [6.00]
C1QCG1S24S6XXPX	500-650 [24.00]	1828.8 [72.00]	457.2 [18.00]
C1QCG1S24S8XXPX	500-650 [24.00]	1828.8 [72.00]	406.4 [16.00]
C1QCG1S24SXXPX	500-650 [24.00]	1828.8 [72.00]	304.8 [12.00]
C1QCG1S30S6XXPX	650-800 [30.00]	1981.2 [78.00]	609.6 [24.00]
C1QCG1S30S8XXPX	650-800 [30.00]	1981.2 [78.00]	558.8 [22.00]
C1QCG1S30SXXPX	650-800 [30.00]	1981.2 [78.00]	457.2 [18.00]
C1QCG1S36S6XXPX	800-1000 [36.00]	2133.6 [84.00]	762.0 [30.00]
C1QCG1S36S8XXPX	800-1000 [36.00]	2133.6 [84.00]	711.2 [28.00]
C1QCG1S36SXXPX	800-1000 [36.00]	2133.6 [84.00]	609.6 [24.00]
C1QCG1S42S6XXPX	1000-12000 [42.00]	2286.0 [90.00]	914.4 [36.00]
C1QCG1S42S8XXPX	1000-12000 [42.00]	2286.0 [90.00]	863.6 [34.00]
C1QCG1S42SXXPX	1000-12000 [42.00]	2286.0 [90.00]	762.0 [30.00]

BLADE COLOR CHART	
ASSEMBLY PART NO.	BLADE COLOR
C1QCGBSXXSXOX	ORANGE
C1QCGBSXXSXBX	BROWN
C1QCGBSXXSXTX	TAN
C1QCGBSXXSXGX	GREEN
C1QCGBSXXSXNX	NAVY BLUE



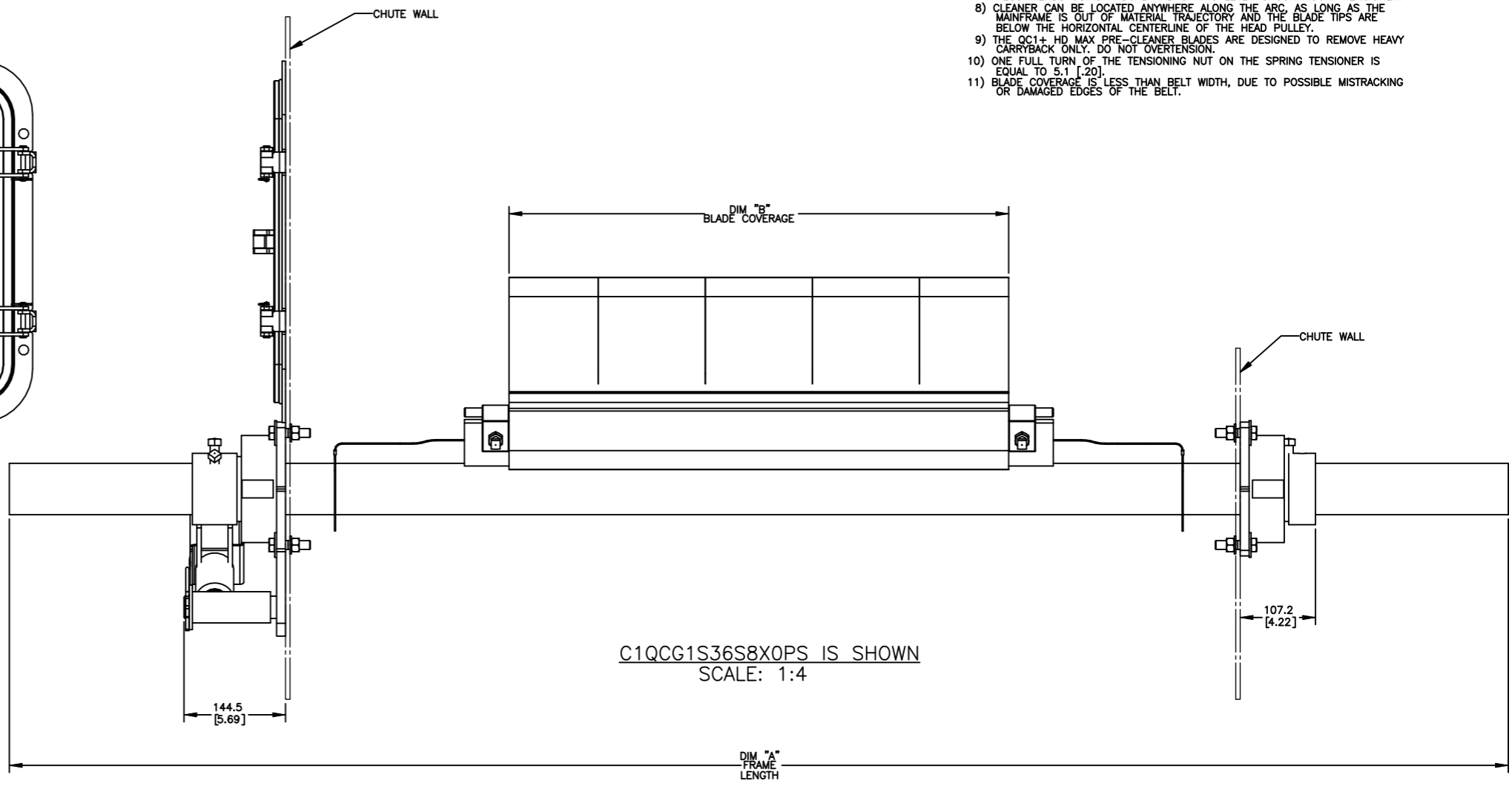
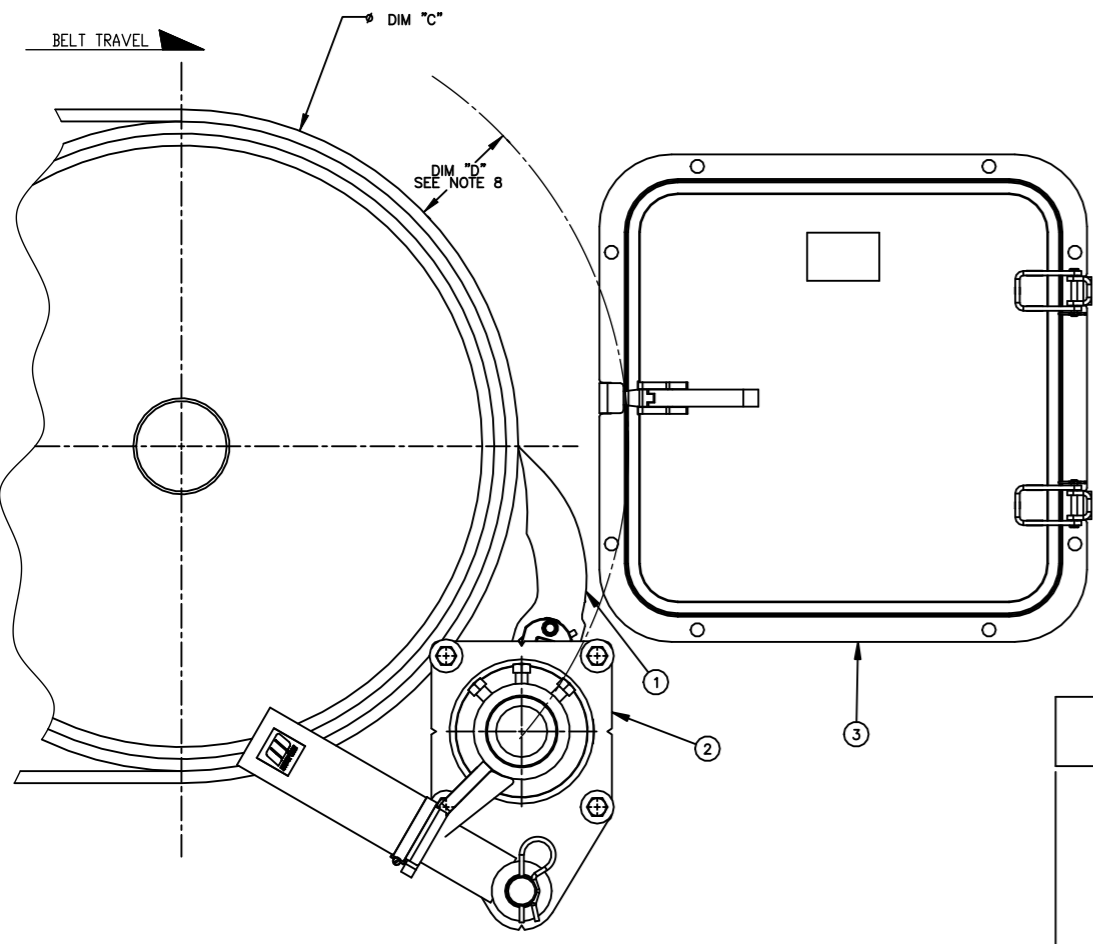
TENSIONER CHUTE CUTOUT DETAIL
SCALE 3:8
TYPICAL BOTH SIDES



ACCESS DOOR CUTOUT DETAIL
SCALE 1:4

- NOTES:
- ALL DIMENSIONS ARE GIVEN IN MM [INCHES]. ALL DIMENSIONS ARE FOR REFERENCE ONLY.
 - IN THE C1QCG PART NUMBER THE FIRST SXX INDICATES THE BELT WIDTH IN STANDARD INCH UNITS FOR BELT WIDTHS 18-42.
 - THE NEXT SX INDICATES THE LESS BELT WIDTH BLADE COVERAGE IN STANDARD INCH UNITS.
 00 = NO BLADE
 S6 = 6 LESS BELT WIDTH
 S8 = 8 LESS BELT WIDTH
 S18 = 18
 S24 = 24
 S42 = 42
 - THE FOURTH X IN THE PART NUMBER INDICATES THE BLADE COLOR:
 0 = NO BLADE
 B = BROWN
 T = TAN
 G = GREEN
 N = NAVY BLUE
 O = ORANGE
 - THE FIFTH X INDICATES IF THE BLADE IS SOLID OR SEGMENTED:
 0 = SEGMENTED BLADE / NO BLADE
 1 = SOLID BLADE
 - THE P IN THE PART NUMBER INDICATES A PAINTED STEEL MAINFRAME.
 THE LAST X INDICATES THE TENSIONER OPTIONS:
 BLANK = NO TENSIONER
 S = UNIVERSAL SPRING TENSIONER (38003)
 - FOR EASY ACCESSIBILITY AND MAINTENANCE, MARTIN ENGINEERING RECOMMENDS BOLTING CLEANER TO EXISTING STRUCTURE WHEN APPLICABLE.
 - CLEANER IS SHOWN IN RECOMMENDED WORKING POSITION.
 - WHERE EXTREME OR UNUSUAL CONDITIONS EXIST, OR SPECIAL MAINFRAME LENGTHS ARE REQUIRED CONTACT MARIN ENGINEERING.
 - REFER TO OPERATOR'S MANUALS M4173, & M3891 FOR COMPLETE INSTALLATION INSTRUCTIONS.
 - FOR BELT WIDTHS [48.00] AND LARGER, MARTIN ENGINEERING RECOMMENDS USING A DUAL XHD SPRING LEVER SHOCK MOUNT TENSIONER.
 - CLEANER CAN BE LOCATED ANYWHERE ALONG THE ARC, AS LONG AS THE MAINFRAME IS OUT OF MATERIAL TRAJECTORY AND THE BLADE TIPS ARE BELOW THE HORIZONTAL CENTERLINE OF THE HEAD PULLEY.
 - THE QC1+ HD MAX PRE-CLEANER BLADES ARE DESIGNED TO REMOVE HEAVY CARRYBACK ONLY. DO NOT OVERTENSION.
 - ONE FULL TURN OF THE TENSIONING NUT ON THE SPRING TENSIONER IS EQUAL TO 5.1 [20].
 - BLADE COVERAGE IS LESS THAN BELT WIDTH, DUE TO POSSIBLE MISTRACKING OR DAMAGED EDGES OF THE BELT.

MOUNTING LOCATION CHART	
HEAD PULLEY DIA. INCLUDING BELT AND LAGGING	DIM "D"
406.4 [16.00]	146.1 [5.75]
508.0 [20.00]	139.7 [5.50]
609.6 [24.00]	133.4 [5.25]
711.2 [28.00]	127.0 [5.00]
762.0-3048.0 [30.00-120.00]	120.7 [4.75]



C1QCG1S36S8X0PS IS SHOWN
SCALE: 1:4

DIM "A"
FRAME LENGTH

© Copyright 2022 Martin Engineering. All rights reserved. Covered by U.S. and foreign patents pending and issued. O and TM indicate trademarks of Martin Engineering.

		MARTIN ENGINEERING NEPONSET, IL USA	
TITLE MARTIN QC1+ HD MAX 1PC PRE-CLEANER W/UNIVERSAL SPRING TENSIONER & 18X18 ACCESS DOOR		DRAWN MH DATE 05/05/22 CHECKED ENG. JLR DATE 05/05/22 APPROVED JLR DATE 05/06/22	
SALES DRAWING		SALES DRAWING	
NO. DESCRIPTION ECN DATE BY		PR14323 S50146-S	
SOLIDWORKS REVISION		SCALE 1:4	