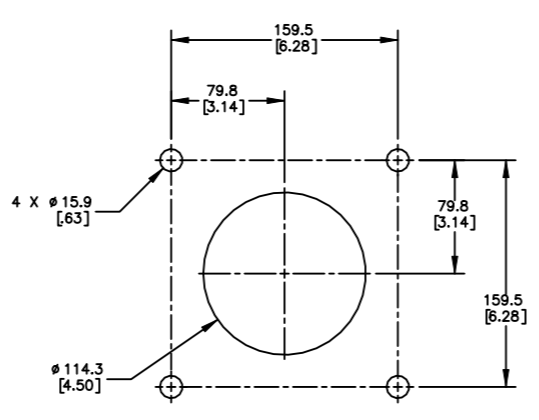


PART NUMBER	BELT WIDTH	DIM "A" MAX FRAME LENGTH	DIM "B" BLADE COVERAGE
C1QCG3S48S6XXPX	1200-1400 [48.00]	2438.4 [96.00]	1066.8 [42.00]
C1QCG3S48S8XXPX	1200-1400 [48.00]	2438.4 [96.00]	1016.0 [40.00]
C1QCG3S48SCXXPX	1200-1400 [48.00]	2438.4 [96.00]	914.4 [36.00]
C1QCG3S54S6XXPX	1400-1600 [54.00]	2590.8 [102.00]	1219.2 [48.00]
C1QCG3S54S8XXPX	1400-1600 [54.00]	2590.8 [102.00]	1168.4 [46.00]
C1QCG3S54SCXXPX	1400-1600 [54.00]	2590.8 [102.00]	1066.8 [42.00]
C1QCG3S60S6XXPX	1600-1800 [60.00]	2743.2 [108.00]	1371.6 [54.00]
C1QCG3S60S8XXPX	1600-1800 [60.00]	2743.2 [108.00]	1320.8 [52.00]
C1QCG3S60SCXXPX	1600-1800 [60.00]	2743.2 [108.00]	1219.2 [48.00]
C1QCG3S66S6XXPX	1700-1800 [66.00]	2895.6 [114.00]	1524.0 [60.00]
C1QCG3S66S8XXPX	1700-1800 [66.00]	2895.6 [114.00]	1473.2 [58.00]
C1QCG3S66SCXXPX	1700-1800 [66.00]	2895.6 [114.00]	1371.6 [54.00]
C1QCG3S72S6XXPX	1800-2000 [72.00]	3048.0 [120.00]	1676.4 [66.00]
C1QCG3S72S8XXPX	1800-2000 [72.00]	3048.0 [120.00]	1625.6 [64.00]
C1QCG3S72SCXXPX	1800-2000 [72.00]	3048.0 [120.00]	1524.0 [60.00]

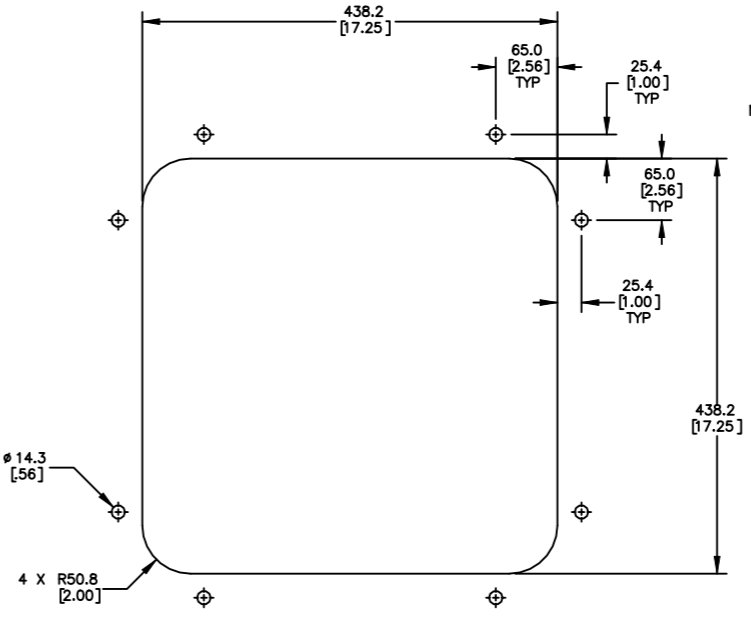
BLADE COLOR CHART	
ASSEMBLY PART NO.	BLADE COLOR
C1QCGBSXXSXOX	ORANGE
C1QCGBSXXSXB	BROWN
C1QCGBSXXSXTX	TAN
C1QCGBSXXSXGX	GREEN
C1QCGBSXXSXNX	NAVY BLUE

ITEM	QTY.	DESCRIPTION	PART NUMBER
1	1	MARTIN QC1+ HD MAX ASSEMBLY	SEE CHART
2	1	MARTIN DUAL UNIVERSAL SPRING TENSIONER	38003-2
3	1	MARTIN LOW PROFILE ACCESS DOOR	CYA-1818

MOUNTING LOCATION CHART	
Ø DIM "C" HEAD PULLEY DIA. INCLUDING BELT AND LAGGING	DIM "D"
406.4 [16.00]	146.1 [5.75]
508.0 [20.00]	139.7 [5.50]
609.6 [24.00]	133.4 [5.25]
711.2 [28.00]	127.0 [5.00]
762.0-3048.0 [30.00-120.00]	120.7 [4.75]

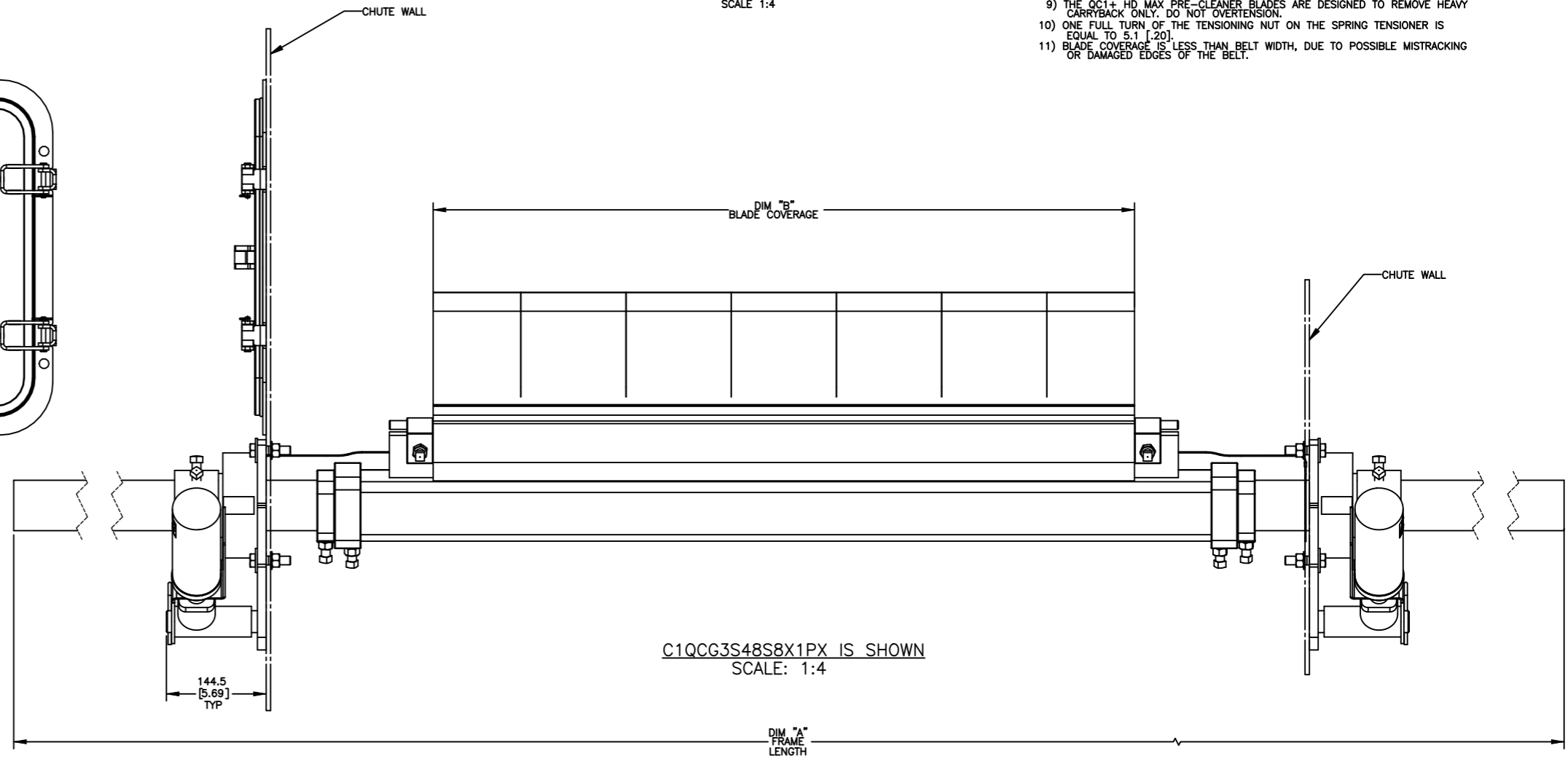
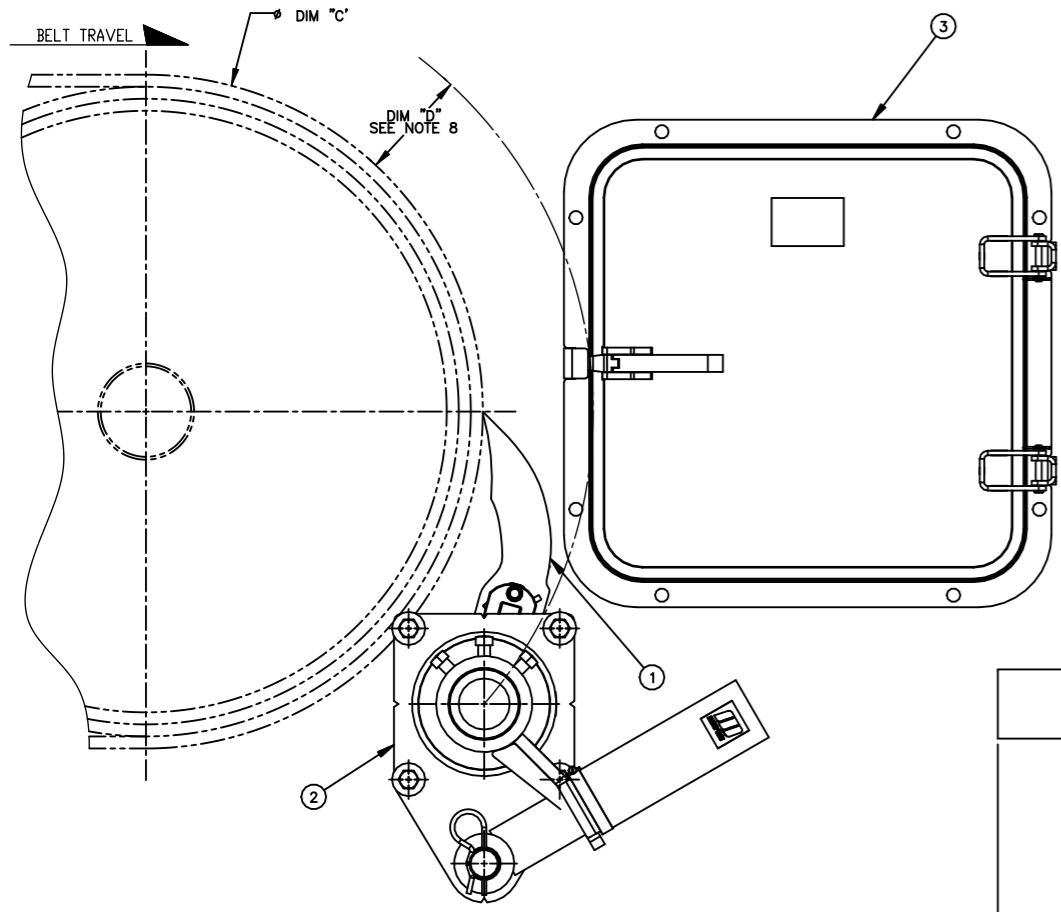


TENSIONER CHUTE CUTOUT DETAIL
SCALE 3:8
TYPICAL BOTH SIDES



ACCESS DOOR CUTOUT DETAIL
SCALE 1:4

- NOTES:
- ALL DIMENSIONS ARE GIVEN IN MM [INCHES]. ALL DIMENSIONS ARE FOR REFERENCE ONLY. IN THE C1QCG3 PART NUMBER THE FIRST SXX INDICATES THE BELT WIDTH IN STANDARD INCH UNITS FOR BELT WIDTHS 48-72.
 - S48 = 48
S54 = 54
S72 = 72
THE NEXT SXX INDICATES THE LESS BELT WIDTH BLADE COVERAGE IN STANDARD INCH UNITS.
00 = NO BLADE
S6 = 6 LESS BELT WIDTH
S8 = 8 LESS BELT WIDTH
SC = 12 LESS BELT WIDTH
 - THE FOURTH X IN THE PART NUMBER INDICATES THE BLADE COLOR:
0 = NO BLADE
B = BROWN
T = TAN
G = GREEN
N = NAVY BLUE
O = ORANGE
 - THE FIFTH X INDICATES IF THE BLADE IS SOLID OR SEGMENTED:
0 = SEGMENTED BLADE / NO BLADE
1 = SOLID BLADE
 - THE P IN THE PART NUMBER INDICATES A PAINTED STEEL MAINFRAME.
THE LAST X INDICATES THE TENSIONER OPTIONS:
BLANK = NO TENSIONER
S = DUAL UNIVERSAL SPRING TENSIONER (38003-2)
 - FOR EASY ACCESSIBILITY AND MAINTENANCE, MARTIN ENGINEERING RECOMMENDS BOLTING CLEANER TO EXISTING STRUCTURE WHEN APPLICABLE.
 - CLEANER IS SHOWN IN RECOMMENDED WORKING POSITION.
 - WHERE EXTREME OR UNUSUAL CONDITIONS EXIST, OR SPECIAL MAINFRAME LENGTHS ARE REQUIRED, CONTACT MARTIN ENGINEERING.
 - REFER TO OPERATOR'S MANUALS M4173, & M3891 FOR COMPLETE INSTALLATION INSTRUCTIONS.
 - FOR BELT WIDTHS [42.00] AND SMALLER, MARTIN ENGINEERING RECOMMENDS USING A SINGLE SPRING LEVER SHOCK MOUNT TENSIONER.
 - CLEANER CAN BE LOCATED ANYWHERE ALONG THE ARC, AS LONG AS THE MAINFRAME IS OUT OF MATERIAL TRAJECTORY AND THE BLADE TIPS ARE BELOW THE HORIZONTAL CENTERLINE OF THE HEAD PULLEY.
 - THE QC1+ HD MAX PRE-CLEANER BLADES ARE DESIGNED TO REMOVE HEAVY CARRYBACK ONLY. DO NOT OVERTENSION.
 - ONE FULL TURN OF THE TENSIONING NUT ON THE SPRING TENSIONER IS EQUAL TO 5.1 [0.20].
 - BLADE COVERAGE IS LESS THAN BELT WIDTH, DUE TO POSSIBLE MISTRACKING OR DAMAGED EDGES OF THE BELT.



C1QCG3S48S8X1PX IS SHOWN
SCALE: 1:4

© Copyright 2022 Martin Engineering. All rights reserved. Covered by U.S. and foreign patents pending and issued. ® and ™ indicate trademarks of Martin Engineering.

MARTIN ENGINEERING
NEPONSET, IL USA

TITLE: MARTIN QC1+ HD MAX 3PC PRE-CLEANER WITH DUAL UNIVERSAL SPRING TENSIONER & 18X18 ACCESS DOOR

DRAWN: MH DATE: 03/11/22
CHECKED: [Signature] DATE: 03/14/22
APPROVED: [Signature] DATE: 03/14/22

SALES DRAWING: PR14198

NO. DESCRIPTION ECN DATE BY

SOLIDWORKS REVISION

S50145-D SCALE 1:4