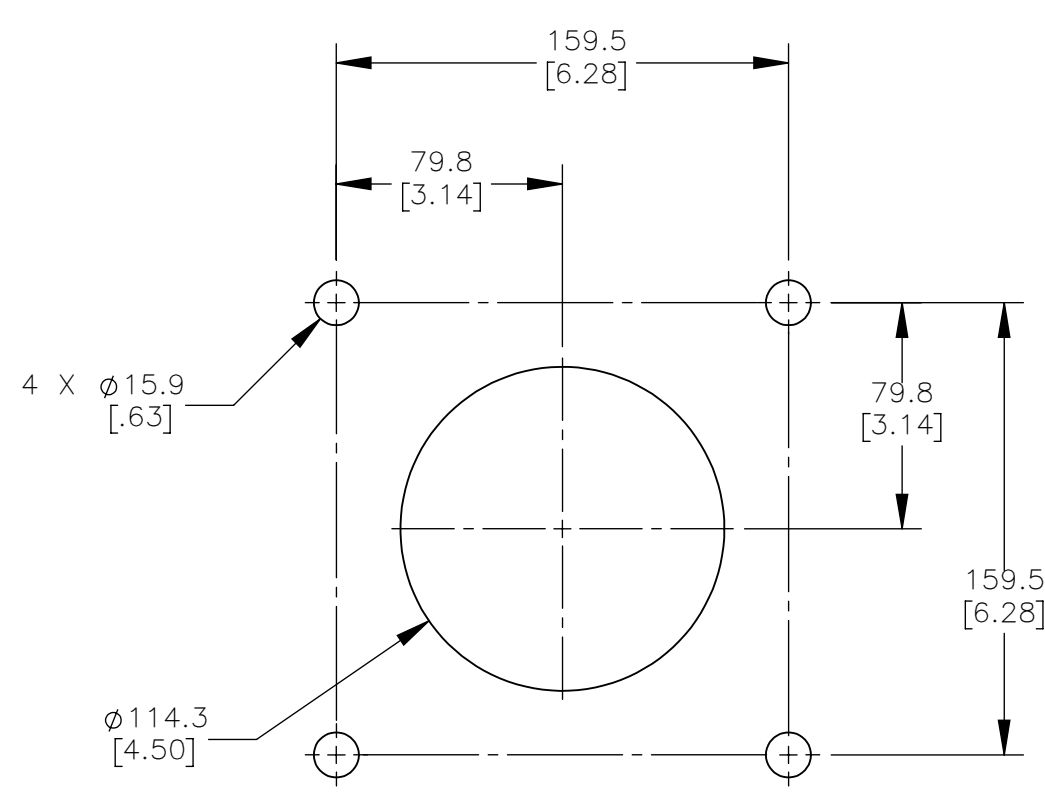


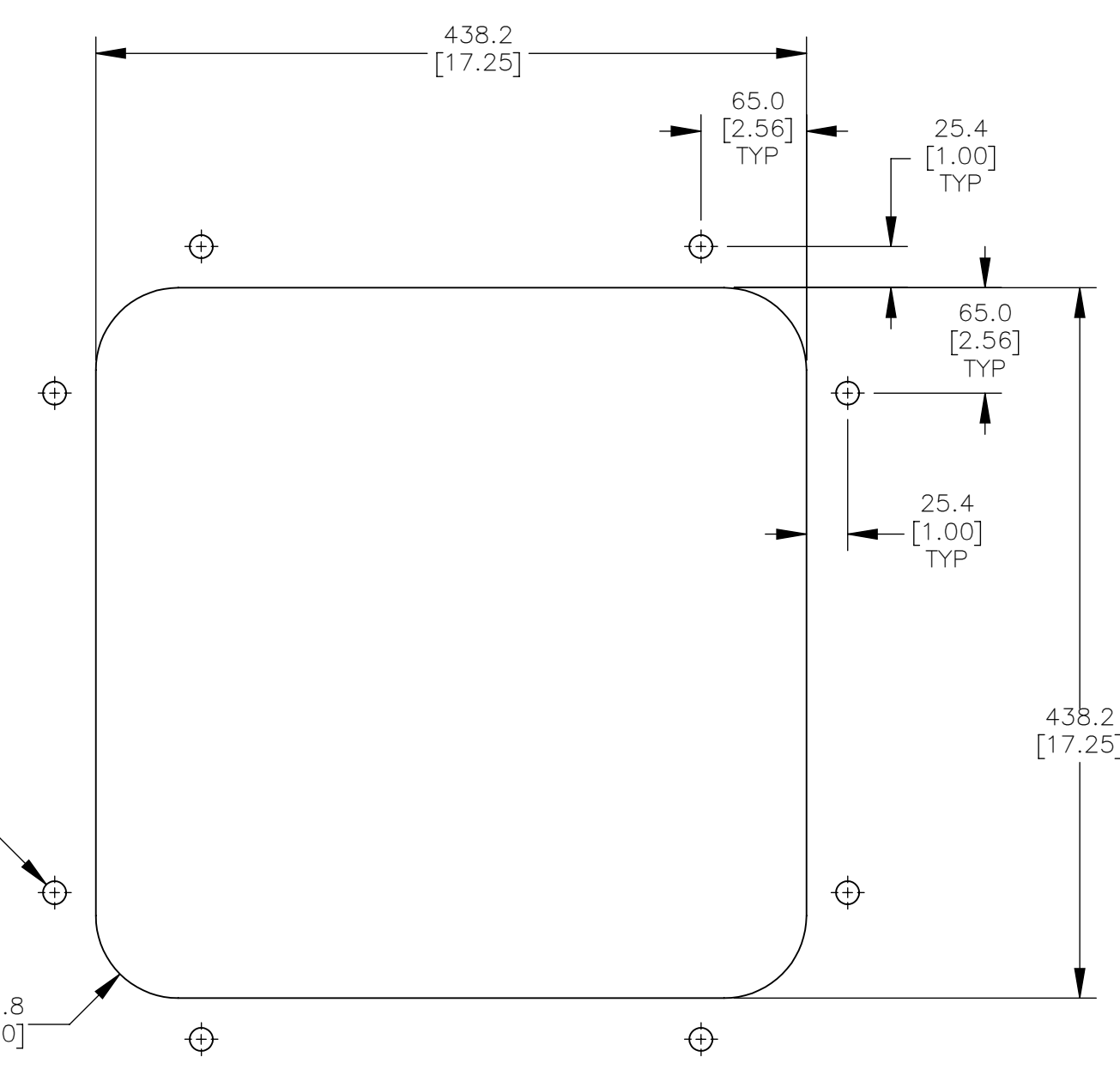
PART NUMBER	BELT WIDTH	DIM "A" MAX FRAME LENGTH	DIM "B" BLADE COVERAGE
C1QCE3S48S6XXPX	1200-1400 [48.00]	2438.4 [96.00]	1066.8 [42.00]
C1QCE3S48S8XXPX	1200-1400 [48.00]	2438.4 [96.00]	1016.0 [40.00]
C1QCE3S48SCXXPX	1200-1400 [48.00]	2438.4 [96.00]	914.4 [36.00]
C1QCE3S54S6XXPX	1400-1600 [54.00]	2590.8 [102.00]	1219.2 [48.00]
C1QCE3S54S8XXPX	1400-1600 [54.00]	2590.8 [102.00]	1168.4 [46.00]
C1QCE3S54SCXXPX	1400-1600 [54.00]	2590.8 [102.00]	1066.8 [42.00]
C1QCE3S60S6XXPX	1600-1800 [60.00]	2743.2 [108.00]	1371.6 [54.00]
C1QCE3S60S8XXPX	1600-1800 [60.00]	2743.2 [108.00]	1320.8 [52.00]
C1QCE3S60SCXXPX	1600-1800 [60.00]	2743.2 [108.00]	1219.2 [48.00]
C1QCE3S66S6XXPX	1700-1800 [66.00]	2895.6 [114.00]	1524.0 [60.00]
C1QCE3S66S8XXPX	1700-1800 [66.00]	2895.6 [114.00]	1473.2 [58.00]
C1QCE3S66SCXXPX	1700-1800 [66.00]	2895.6 [114.00]	1371.6 [54.00]
C1QCE3S72S6XXPX	1800-2000 [72.00]	3048.0 [120.00]	1676.4 [66.00]
C1QCE3S72S8XXPX	1800-2000 [72.00]	3048.0 [120.00]	1625.6 [64.00]
C1QCE3S72SCXXPX	1800-2000 [72.00]	3048.0 [120.00]	1524.0 [60.00]

BLADE COLOR CHART	
ASSEMBLY PART NO.	BLADE COLOR
C1QCEBSXXSXOX	ORANGE
C1QCEBSXXSXB	BROWN
C1QCEBSXXSXTX	TAN
C1QCEBSXXSXGX	GREEN
C1QCEBSXXSXNX	NAVY BLUE
C1QCEBSXXSXCX	YELLOW W/CERAMIC BEADS

\*\* = THESE BLADES ARE ONLY OFFERED AS SEGMENTED (10). THESE BLADES ARE INDIVIDUAL 152.4 [6.00] WIDE BLADES. ALL THE OTHER COLOR BLADES CAN BE SEGMENTED BY CUTTING THE SOLID BLADE. SEGMENTS HAVE 0.0 [0.00] WIDTH WITH NO MATERIAL REMOVED.



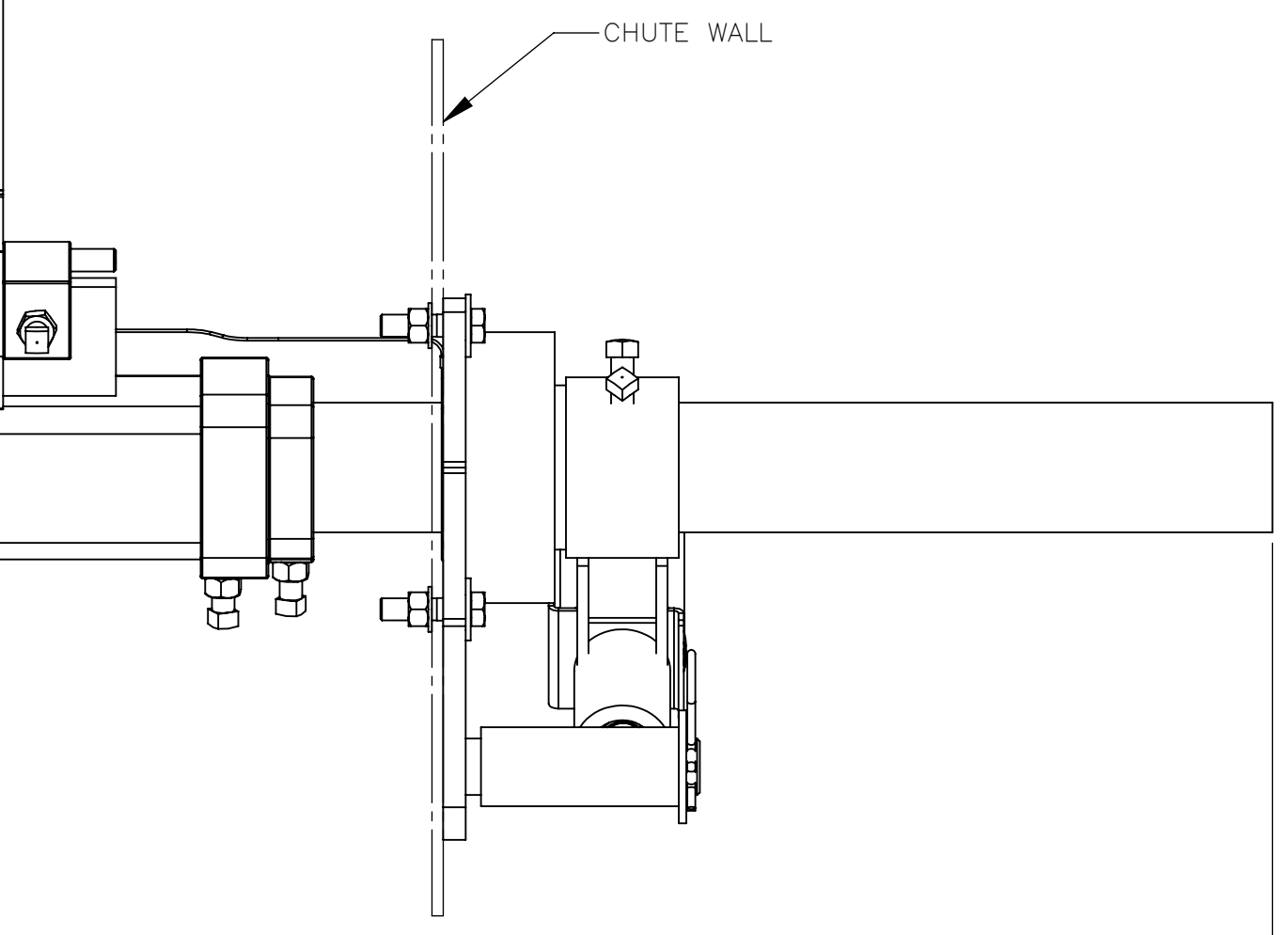
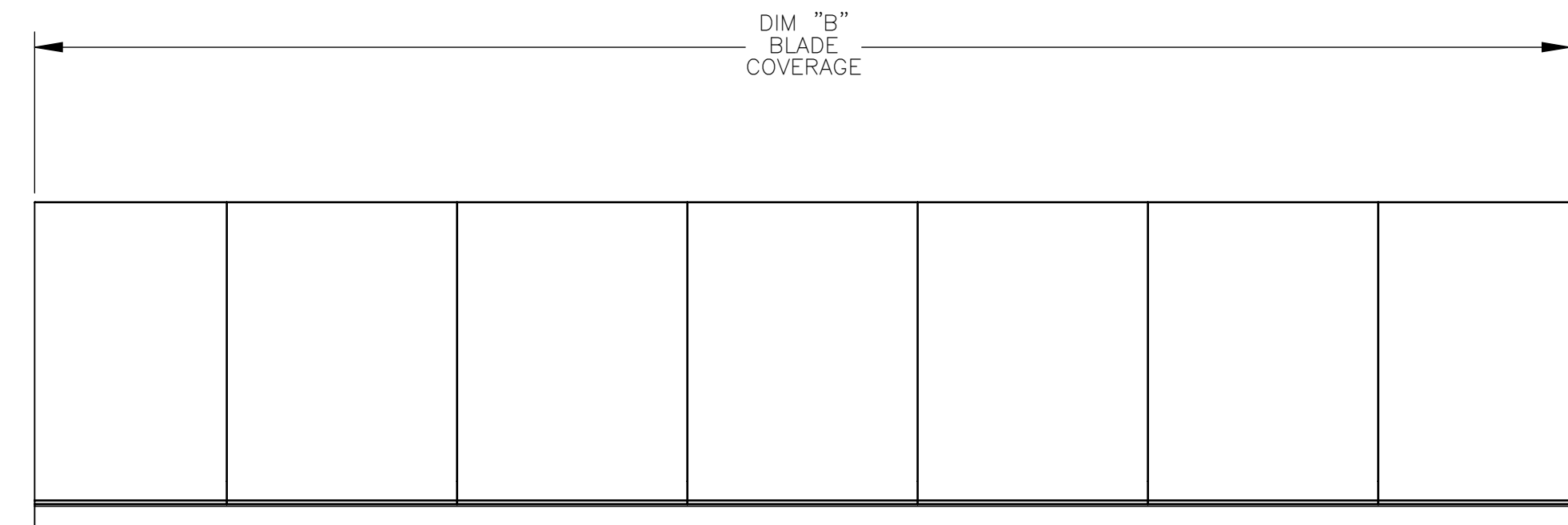
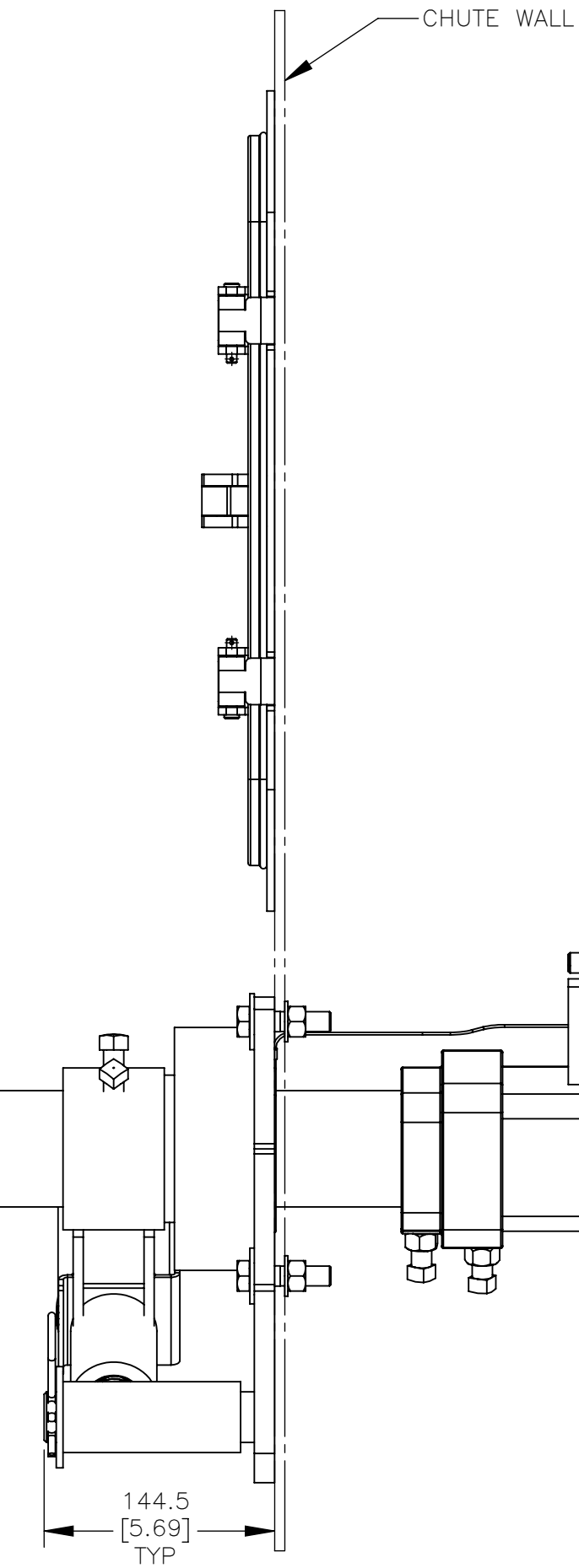
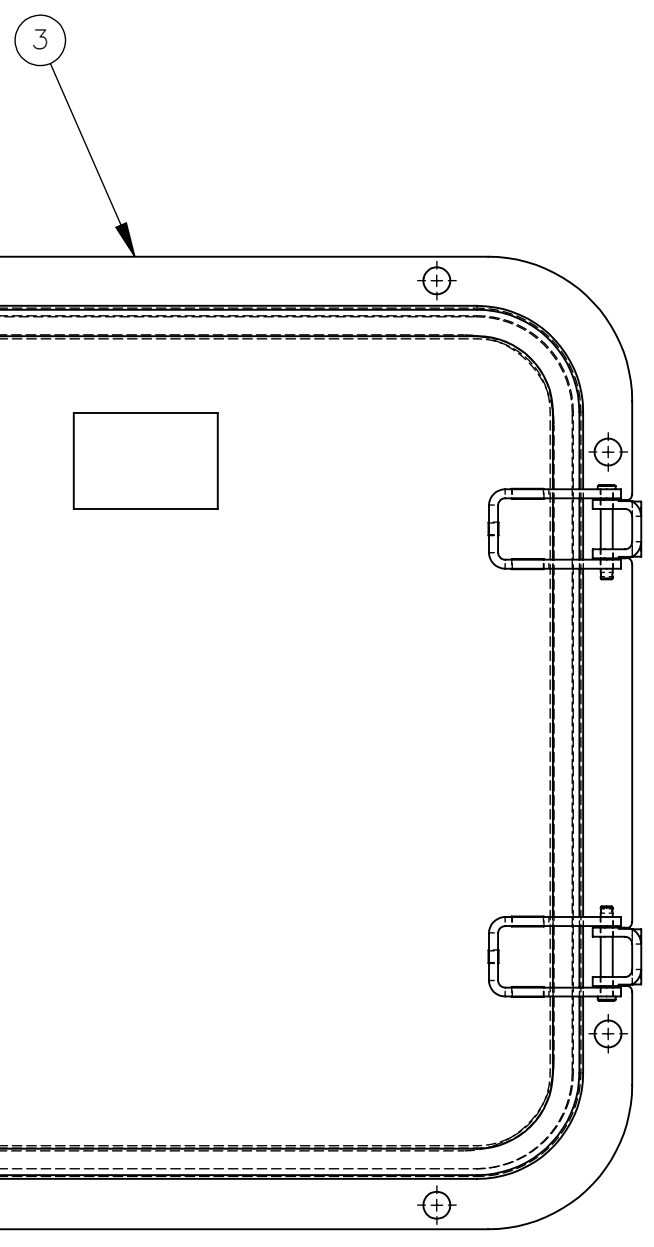
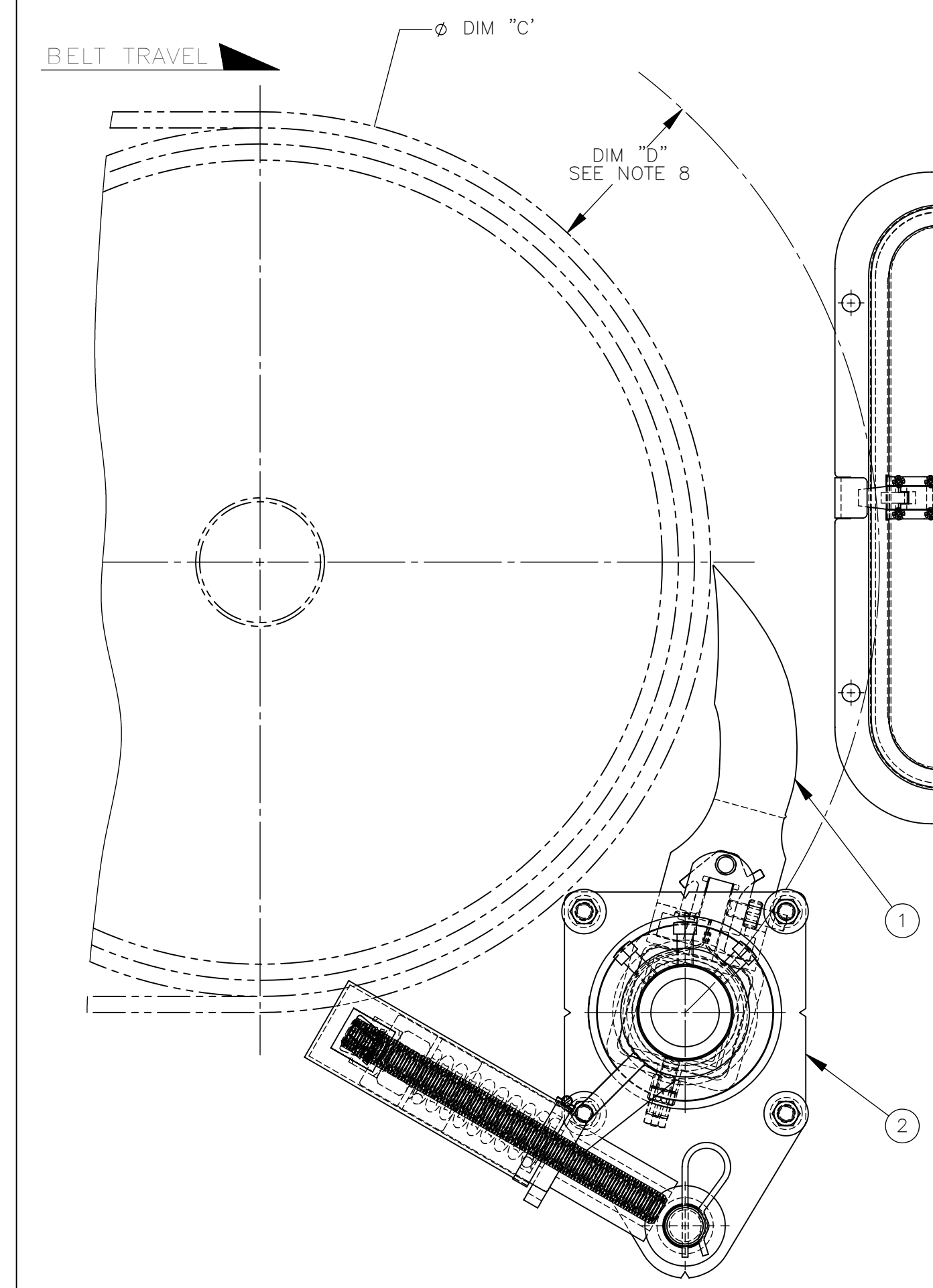
TENSIONER CHUTE CUTOUT DETAIL  
SCALE 3:8  
TYPICAL BOTH SIDES



ACCESS DOOR CUTOUT DETAIL  
SCALE 1:4

- NOTES:
- ALL DIMENSIONS ARE GIVEN IN MM [INCHES]. ALL DIMENSIONS ARE FOR REFERENCE ONLY.
  - IN THE C1QCE3S PART NUMBER THE FIRST SXX INDICATES THE BELT WIDTH IN STANDARD INCH UNITS FOR BELT WIDTHS 48-72.  
S48 = 48  
S54 = 54  
S72 = 72  
THE NEXT SX INDICATES THE LESS BELT WIDTH BLADE COVERAGE IN STANDARD INCH UNITS.  
00 = NO BLADE  
S6 = 6 LESS BELT WIDTH  
S8 = 8 LESS BELT WIDTH  
SC = 12 LESS BELT WIDTH  
THE FOURTH X IN THE PART NUMBER INDICATES THE BLADE COLOR:  
0 = NO BLADE  
B = BROWN  
T = TAN  
G = GREEN  
N = NAVY BLUE  
O = ORANGE  
C = YELLOW WITH CERAMIC BEADS (ONLY AVAILABLE AS A SEGMENTED BLADE)  
THE FIFTH X INDICATES IF THE BLADE IS SOLID OR SEGMENTED:  
0 = SEGMENTED BLADE / NO BLADE  
1 = SOLID BLADE  
THE P IN THE PART NUMBER INDICATES A PAINTED STEEL MAINFRAME.  
THE LAST X INDICATES THE TENSIONER OPTIONS:  
BLANK = NO TENSIONER  
S = DUAL UNIVERSAL SPRING TENSIONER (38003-2)
  - FOR EASY ACCESSIBILITY AND MAINTENANCE, MARTIN ENGINEERING RECOMMENDS BOLTING CLEANER TO EXISTING STRUCTURE WHEN APPLICABLE.
  - CLEANER IS SHOWN IN RECOMMENDED WORKING POSITION.
  - WHERE EXTREME OR UNUSUAL CONDITIONS EXIST, OR SPECIAL MAINFRAME LENGTHS ARE REQUIRED CONTACT MARIN ENGINEERING.
  - REFER TO OPERATOR'S MANUALS M4175, & M3891 FOR COMPLETE INSTALLATION INSTRUCTIONS.
  - FOR BELT WIDTHS [42.00] AND SMALLER, MARTIN ENGINEERING RECOMMENDS USING A SINGLE UNIVERSAL SPRING TENSIONER.
  - CLEANER CAN BE LOCATED ANYWHERE ALONG THE ARC, AS LONG AS THE MAINFRAME IS OUT OF MATERIAL TRAJECTORY AND THE BLADE TIPS ARE BELOW THE HORIZONTAL CENTERLINE OF THE HEAD PULLEY.
  - THE XHD QC1 PRE-CLEANER BLADES ARE DESIGNED TO REMOVE HEAVY CARRYBACK ONLY. DO NOT OVERTENSION.
  - ONE FULL TURN OF THE TENSIONING NUT ON THE SPRING TENSIONER IS EQUAL TO 5.1 [0.20].
  - BLADE COVERAGE IS LESS THAN BELT WIDTH, DUE TO POSSIBLE MISTRACKING OR DAMAGED EDGES OF THE BELT.

MOUNTING LOCATION CHART	
Ø DIM "C" HEAD PULLEY DIA. INCLUDING BELT AND LAGGING	DIM "D"
406.4 [16.00]	146.1 [5.75]
508.0 [20.00]	139.7 [5.50]
609.6 [24.00]	133.4 [5.25]
711.2 [28.00]	127.0 [5.00]
762.0-3048.0 [30.00-120.00]	120.7 [4.75]



C1QCE3S48S8X0PS IS SHOWN

DIM "A" FRAME LENGTH

NO.	DESCRIPTION	ECN	DATE	BY
SOLIDWORKS	REVISION			

Copyright 2022 Martin Engineering. All rights reserved. Covered by U.S. and foreign patents pending and issued. ® and TM indicate trademarks of Martin Engineering.

**MARTIN ENGINEERING**  
NEPONSET, IL USA

TITLE: MARTIN QC1+ XHD 3PC PRE-CLEANER W/DUAL UNIVERSAL SPRING TENSIONER & 18X18 ACCESS DOOR

DRAWN: MH DATE: 10/26/22  
CHECKED: [Signature] DATE: 10/26/22  
APPROVED: [Signature] DATE: 10/26/22

SALES DRAWING: PR14163A S50144-SD SCALE: 1:4