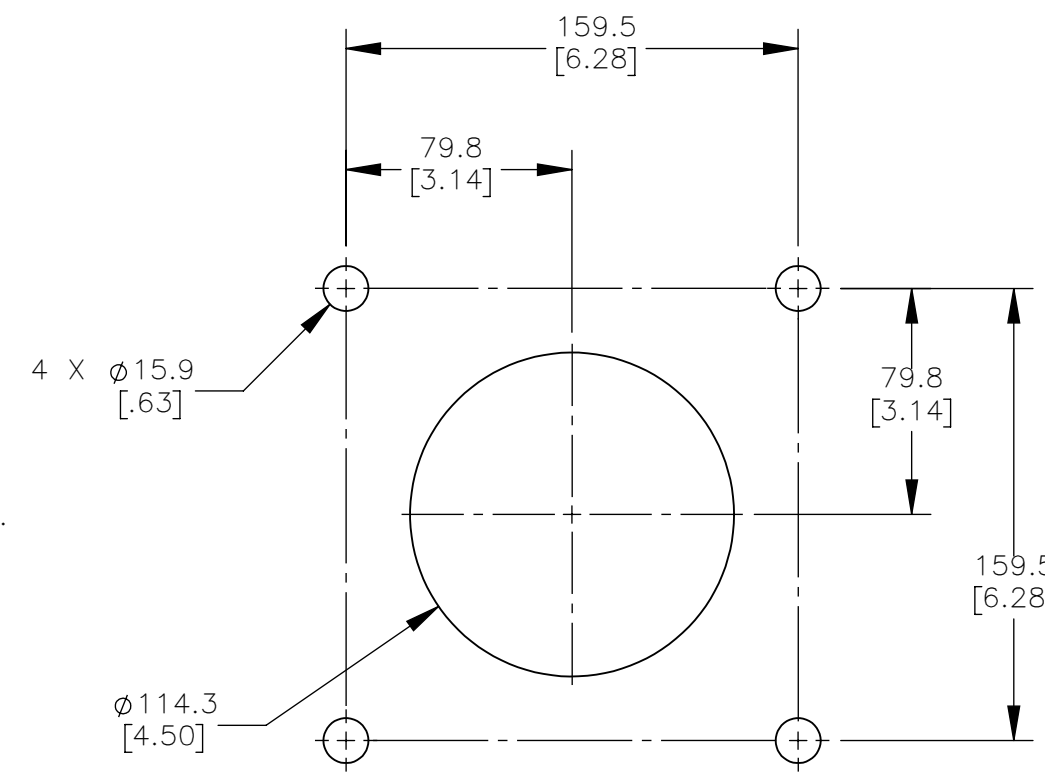


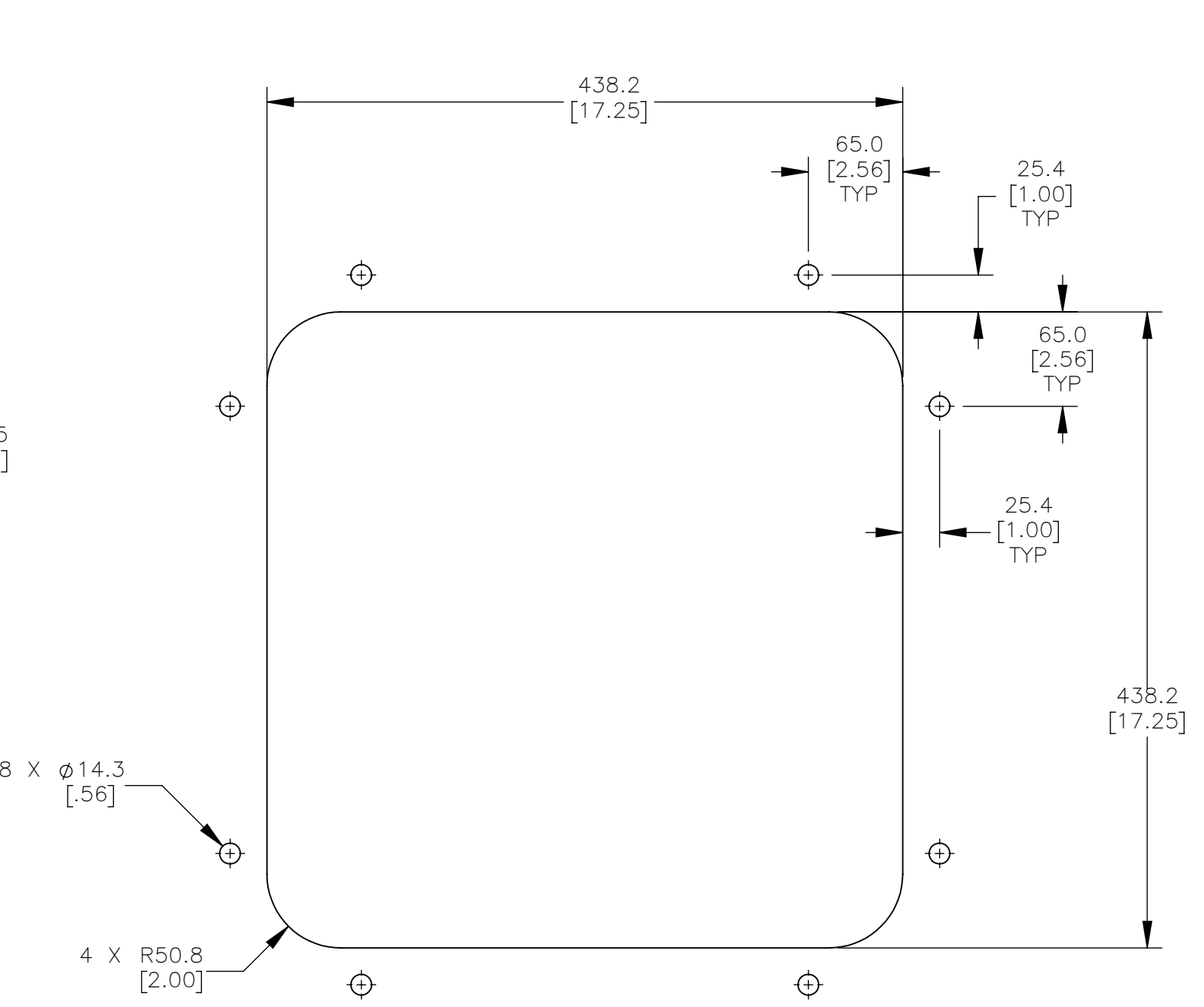
PART NUMBER	BELT WIDTH	DIM "A" MAX FRAME LENGTH	DIM "B" BLADE COVERAGE
C1QCEDS54S6XXPX	1350-1400 [54.00]	2590.8 [102.00]	1219.2 [48.00]
C1QCEDS54SCXXPX	1350-1400 [54.00]	2590.8 [102.00]	1066.8 [42.00]
C1QCEDS60S6XXPX	1600-1800 [60.00]	2743.2 [108.00]	1371.6 [54.00]
C1QCEDS60SCXXPX	1600-1800 [60.00]	2743.2 [108.00]	1219.2 [48.00]
C1QCEDS72S6XXPX	1800-2000 [72.00]	3048.0 [120.00]	1676.4 [66.00]
C1QCEDS72SCXXPX	1800-2000 [72.00]	3048.0 [120.00]	1524.0 [60.00]
C1QCEDS78S6XXPX	1950-2000 [78.00]	3200.4 [126.00]	1828.8 [72.00]
C1QCEDS78SCXXPX	1950-2000 [78.00]	3200.4 [126.00]	1676.4 [66.00]
C1QCEDS84S6XXPX	2100-2150 [84.00]	3352.8 [132.00]	1981.2 [78.00]
C1QCEDS84SCXXPX	2100-2150 [84.00]	3352.8 [132.00]	1828.8 [72.00]
C1QCEDS96S6XXPX	2400-2450 [96.00]	3657.6 [144.00]	2286.0 [90.00]
C1QCEDS96SCXXPX	2400-2450 [96.00]	3657.6 [144.00]	2133.6 [84.00]
C1QCEDSA2S6XXPX	2550-2600 [102.00]	3810.0 [150.00]	2438.4 [96.00]
C1QCEDSA2SCXXPX	2550-2600 [102.00]	3810.0 [150.00]	2286.0 [90.00]
C1QCEDSA8S6XXPX	2700-2750 [108.00]	3962.4 [156.00]	2590.8 [102.00]
C1QCEDSA8SCXXPX	2700-2750 [108.00]	3962.4 [156.00]	2438.4 [96.00]
C1QCEDSC0S6XXPX	3000-3050 [120.00]	4267.2 [168.00]	2895.6 [114.00]
C1QCEDSC0SCXXPX	3000-3050 [120.00]	4267.2 [168.00]	2743.2 [108.00]
C1QCEDSC6S6XXPX	3200 [126.00]	4419.6 [174.00]	3048.0 [120.00]
C1QCEDSC6SCXXPX	3200 [126.00]	4419.6 [174.00]	2895.6 [114.00]

BLADE COLOR CHART	
ASSEMBLY PART NO.	BLADE COLOR
C1QCEKXXXXOX	ORANGE
C1QCEKXXXXBX	BROWN
C1QCEKXXXXTX	TAN
C1QCEKXXXXGX	GREEN
C1QCEKXXXXNX	NAVY BLUE
C1QCEKXXXXCX	YELLOW W/CERAMIC BEADS

** = THESE BLADES ARE ONLY OFFERED AS SEGMENTED. THESE BLADES ARE INDIVIDUAL 152.4 [6.00] WIDE BLADES. ALL THE OTHER COLOR BLADES CAN BE SEGMENTED BY CUTTING THE SOLID BLADE. SEGMENTS HAVE 0.0 [0.00] WIDTH WITH NO MATERIAL REMOVED.



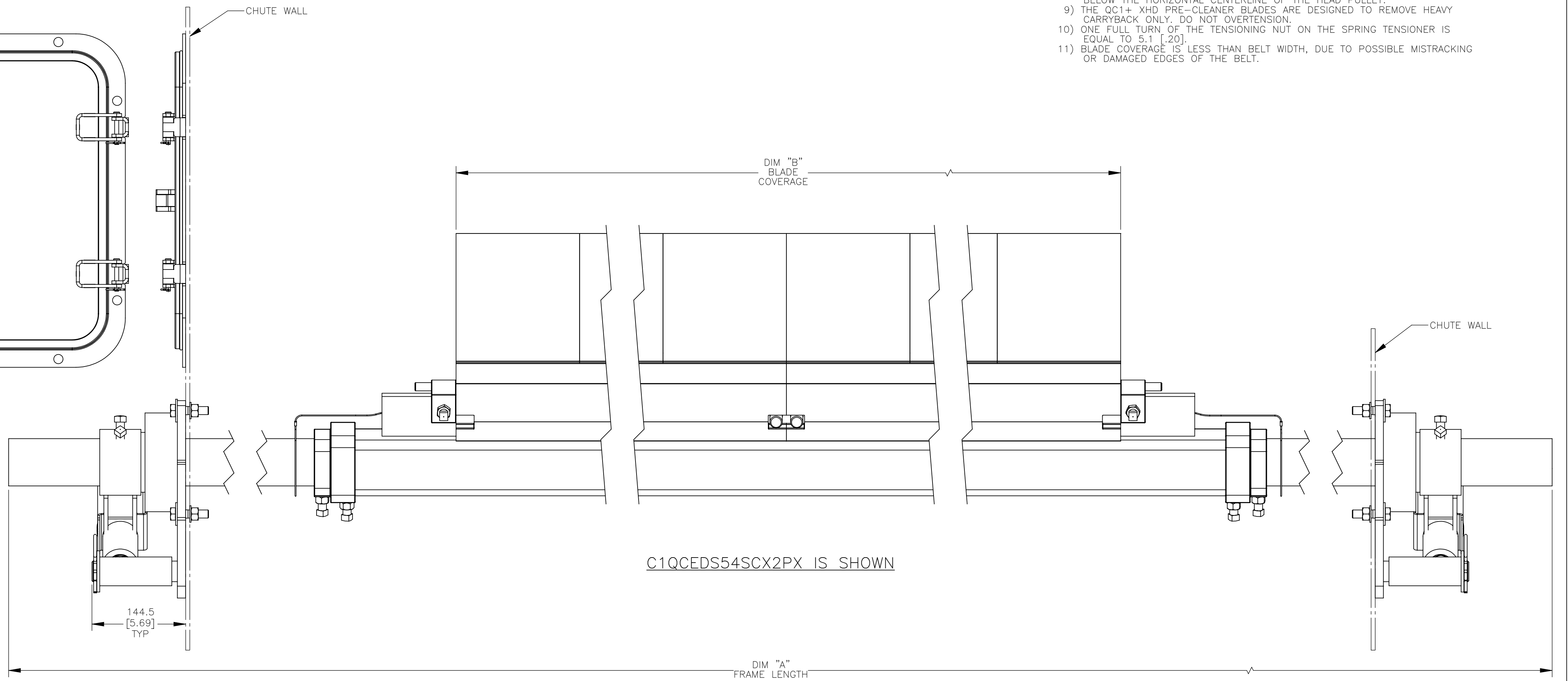
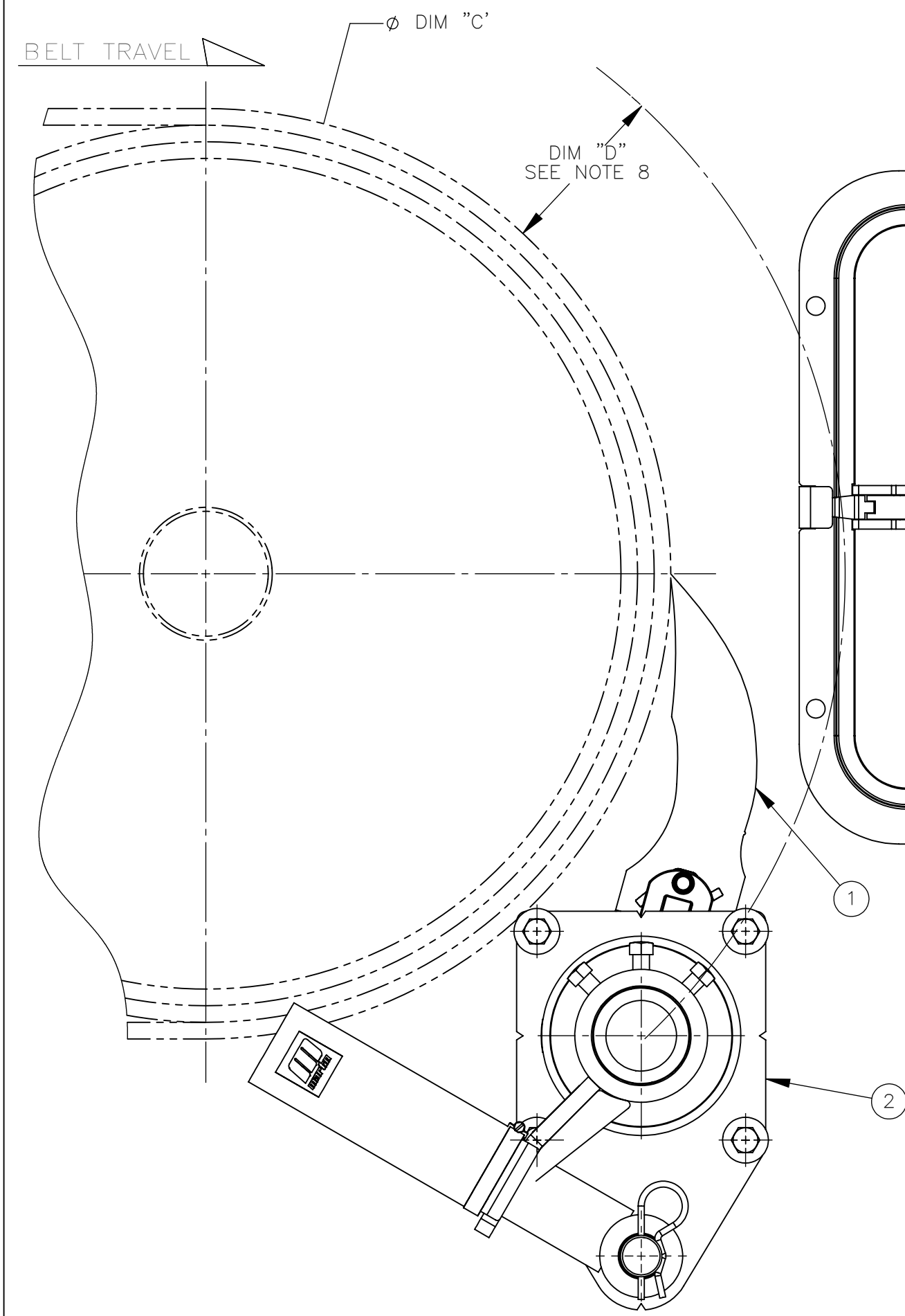
TENSIONER CHUTE CUTOUT DETAIL
SCALE 3:8
TYPICAL BOTH SIDES



ACCESS DOOR CUTOUT DETAIL
SCALE 1:4

- NOTES:
- ALL DIMENSIONS ARE GIVEN IN MM [INCHES]. ALL DIMENSIONS ARE FOR REFERENCE ONLY.
 - IN THE C1QCED PART NUMBER THE FIRST SXX INDICATES THE BELT WIDTH IN STANDARD INCH UNITS FOR BELT WIDTHS 54-126.
S54 = 54
S60 = 60
S66 = 66
S72 = 72
S78 = 78
S84 = 84
S90 = 90
S96 = 96
S102 = 102
S108 = 108
S114 = 114
S120 = 120
S126 = 126
THE NEXT SX INDICATES THE LESS BELT WIDTH BLADE COVERAGE IN STANDARD INCH UNITS.
00 = NO BLADE
S6 = 6 LESS BELT WIDTH
S12 = 12 LESS BELT WIDTH
THE FOURTH X IN THE PART NUMBER INDICATES THE BLADE COLOR:
O = NO BLADE
B = BROWN
T = TAN
G = GREEN
N = NAVY BLUE
C = YELLOW WITH CERAMIC BEADS (ONLY AVAILABLE AS A SEGMENTED BLADE)
THE FIFTH X INDICATES IF THE BLADE IS SOLID OR SEGMENTED:
0 = NO BLADE
2 = SEGMENTED BLADE WITH SLOTS
3 = SOLID BLADE WITH SLOTS
THE P IN THE PART NUMBER INDICATES A PAINTED STEEL MAINFRAME.
THE LAST X INDICATES THE TENSIONER OPTIONS:
BLANK = NO TENSIONER
S = DUAL UNIVERSAL SPRING TENSIONER (38003-2)
 - FOR EASY ACCESSIBILITY AND MAINTENANCE, MARTIN ENGINEERING RECOMMENDS BOLTING CLEANER TO EXISTING STRUCTURE WHEN APPLICABLE.
 - CLEANER IS SHOWN IN RECOMMENDED WORKING POSITION.
 - WHERE EXTREME OR UNUSUAL CONDITIONS EXIST, OR SPECIAL MAINFRAME LENGTHS ARE REQUIRED CONTACT MARIN ENGINEERING.
 - REFER TO OPERATOR'S MANUALS M4175, & M3891 FOR COMPLETE INSTALLATION INSTRUCTIONS.
 - CLEANER CAN BE LOCATED ANYWHERE ALONG THE ARC, AS LONG AS THE MAINFRAME IS OUT OF MATERIAL TRAJECTORY AND THE BLADE TIPS ARE BELOW THE HORIZONTAL CENTERLINE OF THE HEAD PULLEY.
 - THE QC1+ XHD PRE-CLEANER BLADES ARE DESIGNED TO REMOVE HEAVY CARRYBACK ONLY. DO NOT OVERTENSION.
 - ONE FULL TURN OF THE TENSIONING NUT ON THE SPRING TENSIONER IS EQUAL TO 5.1 [0.20].
 - BLADE COVERAGE IS LESS THAN BELT WIDTH, DUE TO POSSIBLE MISTRACKING OR DAMAGED EDGES OF THE BELT.

MOUNTING LOCATION CHART	
Ø DIM "C" HEAD PULLEY DIA. INCLUDING BELT AND LAGGING	DIM "D"
406.4 [16.00]	146.1 [5.75]
508.0 [20.00]	139.7 [5.50]
609.6 [24.00]	133.4 [5.25]
711.2 [28.00]	127.0 [5.00]
762.0-3048.0 [30.00-120.00]	120.7 [4.75]



NO.	DESCRIPTION	ECN	DATE	BY
A	CHGD P/N CYA-1218 TO CYA-1818 IN BOM / CHGD DOOR CUTOUT DETAIL FROM CYA-1218 TO CYA-1818.	16025B	05/04/22	MH

Copyright 2021 Martin Engineering. All rights reserved. Covered by U.S. and foreign patents pending and issued. ® and TM indicate trademarks of Martin Engineering.

MARTIN ENGINEERING
NEPONSET, IL USA

TITLE: MARTIN QC1+ XHD DUAL BLD PRE-CLEANER W/DUAL UNIVERSAL SPRING TENSIONER & 18X18 ACCESS DOOR

DRAWN: MH
DATE: 07/27/21
CHECKED: [Signature]
DATE: 08/09/21
APPROVED: [Signature]
DATE: 09/21/21
SCALE: 1:4

SALES DRAWING
PR14163B
S50143D-D