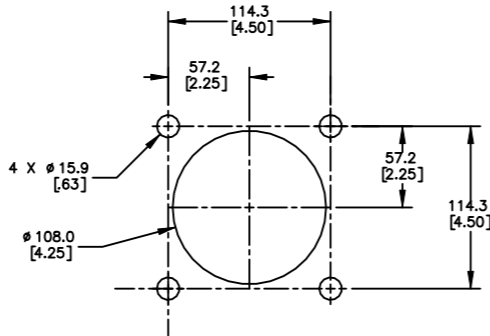


| PART NUMBER | BELT WIDTH | DIM "A" FRAME LENGTH | EXTENDED FRAME LENGTH | BLADE DIM "B" COVERAGE |
|-----------------|----------------|----------------------|-----------------------|------------------------|
| C1QCF1S18S4XXPX | 457.2 [18.00] | 1219.2 [48.00] | 1676.4 [66.00] | 355.6 [14.00] |
| C1QCF1S18S6XXPX | 457.2 [18.00] | 1219.2 [48.00] | 1676.4 [66.00] | 304.8 [12.00] |
| C1QCF1S18S8XXPX | 457.2 [18.00] | 1219.2 [48.00] | 1676.4 [66.00] | 254.0 [10.00] |
| C1QCF1S24S4XXPX | 609.6 [24.00] | 1371.6 [54.00] | 1828.8 [72.00] | 508.0 [20.00] |
| C1QCF1S24S6XXPX | 609.6 [24.00] | 1371.6 [54.00] | 1828.8 [72.00] | 457.2 [18.00] |
| C1QCF1S24S8XXPX | 609.6 [24.00] | 1371.6 [54.00] | 1828.8 [72.00] | 406.4 [16.00] |
| C1QCF1S30S4XXPX | 762.0 [30.00] | 1524.0 [60.00] | 1981.2 [78.00] | 660.4 [26.00] |
| C1QCF1S30S6XXPX | 762.0 [30.00] | 1524.0 [60.00] | 1981.2 [78.00] | 609.6 [24.00] |
| C1QCF1S30S8XXPX | 762.0 [30.00] | 1524.0 [60.00] | 1981.2 [78.00] | 558.8 [22.00] |
| C1QCF1S36S4XXPX | 914.4 [36.00] | 1676.4 [66.00] | 2133.6 [84.00] | 812.8 [32.00] |
| C1QCF1S36S6XXPX | 914.4 [36.00] | 1676.4 [66.00] | 2133.6 [84.00] | 762.0 [30.00] |
| C1QCF1S36S8XXPX | 914.4 [36.00] | 1676.4 [66.00] | 2133.6 [84.00] | 711.2 [28.00] |
| C1QCF1S42S4XXPX | 1066.8 [42.00] | 1828.8 [72.00] | 2286.0 [90.00] | 965.2 [38.00] |
| C1QCF1S42S6XXPX | 1066.8 [42.00] | 1828.8 [72.00] | 2286.0 [90.00] | 914.4 [36.00] |
| C1QCF1S42S8XXPX | 1066.8 [42.00] | 1828.8 [72.00] | 2286.0 [90.00] | 863.6 [34.00] |
| C1QCF1S48S4XXPX | 1219.2 [48.00] | 1981.2 [78.00] | 2438.4 [96.00] | 1117.6 [44.00] |
| C1QCF1S48S6XXPX | 1219.2 [48.00] | 1981.2 [78.00] | 2438.4 [96.00] | 1066.8 [42.00] |
| C1QCF1S48S8XXPX | 1219.2 [48.00] | 1981.2 [78.00] | 2438.4 [96.00] | 1016.0 [40.00] |

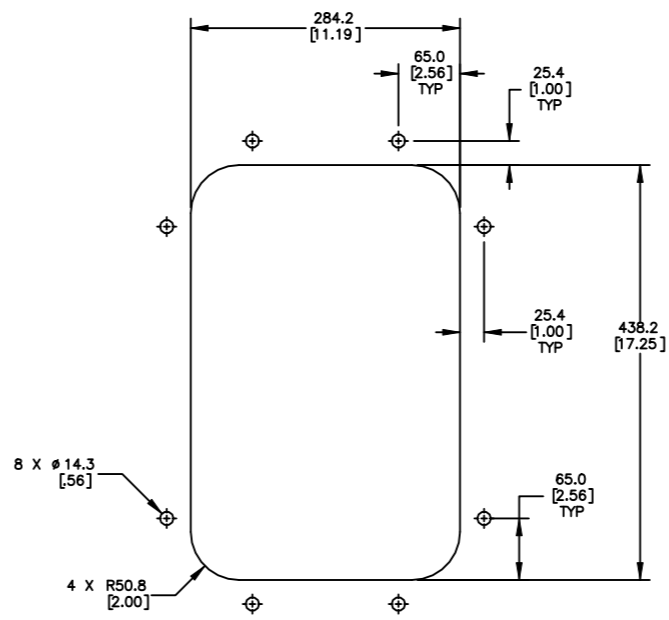
| BLADE COLOR CHART | |
|-------------------|----------------------------|
| ASSEMBLY PART NO. | BLADE COLOR |
| C1QCHBSXXSXOX | ORANGE |
| C1QCHBSXXSXBX | BROWN |
| C1QCHBSXXSXTX | TAN |
| C1QCHBSXXSXGX | GREEN |
| C1QCHBSXXSXNX | NAVY BLUE |
| C1QCHBSXXSXCX | SOL YELLOW W/CERAMIC BEADS |

| ITEM | QTY. | DESCRIPTION | PART NUMBER |
|------|------|------------------------------------|-------------|
| 1 | 1 | MARTIN QC1+ PD BLADE MAINFRAME ASM | SEE CHART |
| 2 | 1 | MARTIN TWIST TENSIONER | 38554 |
| 3 | 1 | MARTIN LOW PROFILE ACCESS DOOR | CYA-1218 |

| MOUNTING LOCATION CHART | |
|---|------------|
| Ø DIM "C" HEAD PULLEY DIA. INCLUDING BELT AND LAGGING | DIM "D" |
| 305 [12.00] THRU 381 [15.00] | 102 [4.00] |
| 406 [16.00] AND OVER | 89 [3.50] |

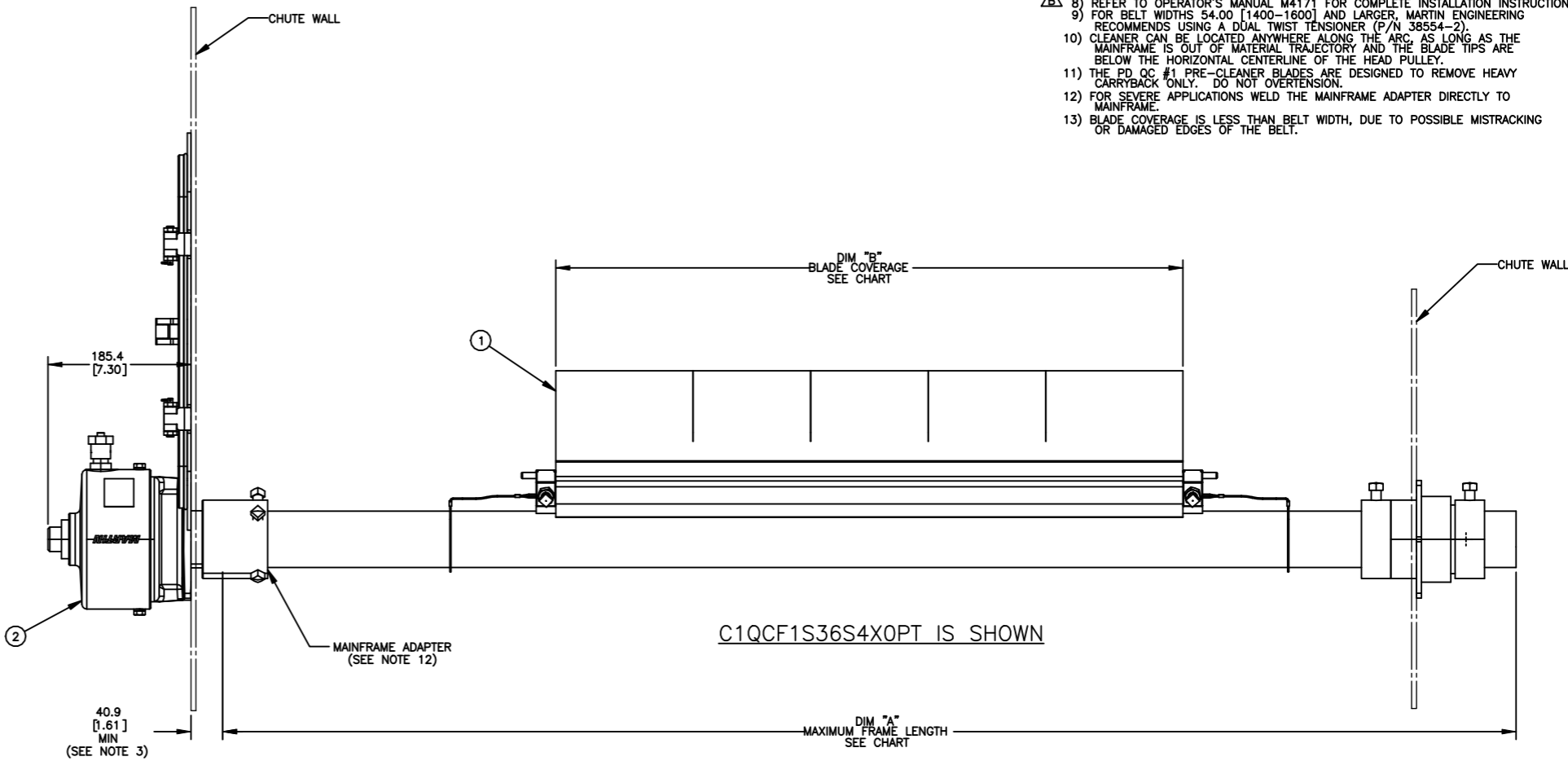
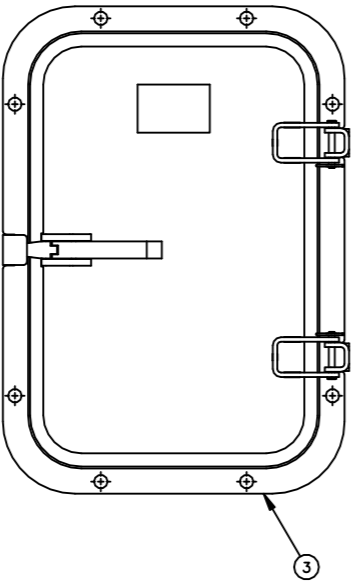
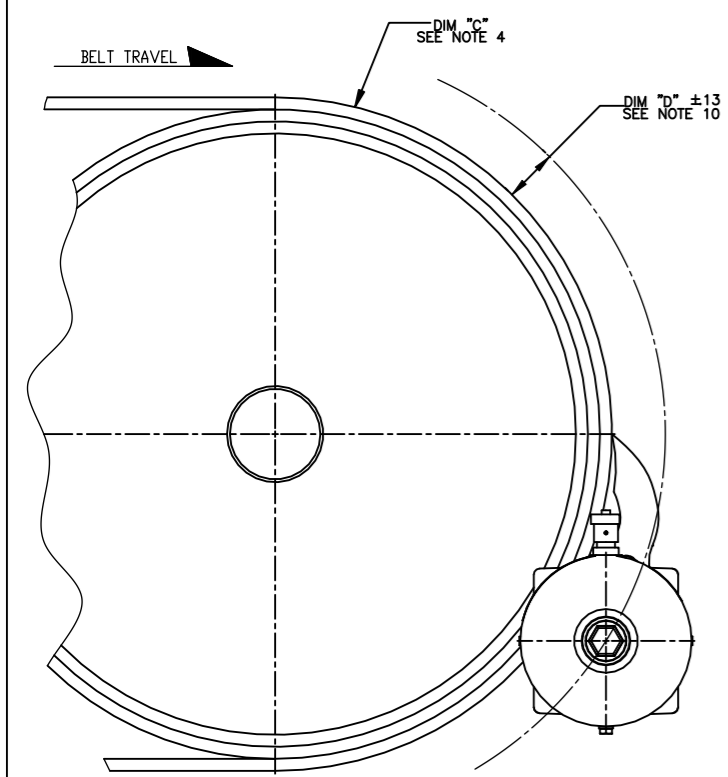


TENSIONER CHUTE CUTOUT DETAIL
SCALE 3:8
TYPICAL BOTH SIDES



ACCESS DOOR CUTOUT DETAIL

- NOTES:
- ALL DIMENSIONS ARE GIVEN IN MM [INCHES]. ALL DIMENSIONS ARE FOR REFERENCE ONLY.
 - IN THE C1QCF1 PART NUMBER THE FIRST SXX INDICATES THE BELT WIDTH IN STANDARD INCH UNITS FOR BELT WIDTHS 18-48.
S18 = 18
S24 = 24
S48 = 48
THE NEXT SX INDICATES THE LESS BELT WIDTH BLADE COVERAGE IN STANDARD INCH UNITS.
00 = NO BLADE
S4 = 4 LESS BELT WIDTH
S6 = 6 LESS BELT WIDTH
S8 = 8 LESS BELT WIDTH
THE FOURTH X IN THE PART NUMBER INDICATES THE BLADE COLOR:
0 = NO BLADE
B = BROWN
T = TAN
G = GREEN
N = NAVY BLUE
O = ORANGE
C = YELLOW W/CERAMIC BEADS (72.00 MAX. BLADE WIDTH)
THE FIFTH X INDICATES IF THE BLADE IS SOLID OR SEGMENTED:
0 = SEGMENTED BLADE / NO BLADE
1 = SOLID BLADE
THE P IN THE PART NUMBER INDICATES A PAINTED STEEL MAINFRAME.
THE E IN THE PART NUMBER INDICATES A EXTENDED STEEL MAINFRAME.
THE LAST X INDICATES THE TENSIONER OPTION:
BLANK = NO TENSIONER
T = TWIST TENSIONER (38554)
 - CUT MAINFRAME TO LENGTH, WITH BLADE CENTERED ON THE BELT MEASURE HOW FAR THE MAINFRAME IS OUTSIDE THE CHUTE WALL AND ADD 1.63 [41] MINIMUM TO CUT OFF.
 - THE PRE-CLEANER BLADE IS DESIGNED FOR HEAD PULLEY'S WITH A MINIMUM EFFECTIVE DIAMETER OF 12.00 [305].
 - CLEANER IS SHOWN IN RECOMMENDED WORKING POSITION.
 - WHERE EXTREME OR UNUSUAL CONDITIONS EXIST, OR SPECIAL MAINFRAME LENGTHS ARE REQUIRED CONTACT MARTIN ENGINEERING.
 - SPRING TENSIONER MAY BE BOLTED OR WELDED IN PLACE. MARTIN ENGINEERING RECOMMENDS BOLTING WHEN APPLICABLE FOR EASIER MAINTENANCE AND ACCESSIBILITY.
 - REFER TO OPERATOR'S MANUAL M4171 FOR COMPLETE INSTALLATION INSTRUCTIONS.
 - FOR BELT WIDTHS 54.00 [1400-1600] AND LARGER, MARTIN ENGINEERING RECOMMENDS USING A DUAL TWIST TENSIONER (P/N 38554-2).
 - CLEANER CAN BE LOCATED ANYWHERE ALONG THE ARC AS LONG AS THE MAINFRAME IS OUT OF MATERIAL TRAJECTORY AND THE BLADE TIPS ARE BELOW THE HORIZONTAL CENTERLINE OF THE HEAD PULLEY.
 - THE PD QC #1 PRE-CLEANER BLADES ARE DESIGNED TO REMOVE HEAVY CARRYBACK ONLY. DO NOT OVERTENSION.
 - FOR SEVERE APPLICATIONS WELD THE MAINFRAME ADAPTER DIRECTLY TO MAINFRAME.
 - BLADE COVERAGE IS LESS THAN BELT WIDTH, DUE TO POSSIBLE MISTRACKING OR DAMAGED EDGES OF THE BELT.



Copyright 2021 Martin Engineering. All rights reserved. Covered by U.S. and foreign patents pending and issued. ® and ™ indicate trademarks of Martin Engineering.



| NO. | DESCRIPTION | ECN | DATE | BY |
|-----|--|--------|----------|----|
| C | CHGD P/N CYA-0912 TO CYA-1218 IN BOM / CHGD DOOR CUTOUT DETAIL FROM CYA-0912 TO CYA-1218. | 16025B | 05/04/22 | MH |
| B | N NOTE 8: CHNGD M3798 TO M4171. | 15967 | 09/24/21 | MH |
| A | ADDED (C1QCHBSXXSXCX) BLADE COLOR OPTION TO CHART & (C = YELLOW W/...) OPTION TO NOTES. (PR141568) | ---- | 06/25/21 | MH |

| | | | |
|---------------|---|-----------|-----------|
| TITLE | MARTIN QC1+ PERFORMANCE DUTY WITH TWIST TENSIONER 12 X 18 ACCESS DOOR | DRAWN | MH |
| DATE | 06/04/21 | CHECKED | |
| ENG. | 929 | DATE | 06/08/21 |
| APPROVED | 929 | DATE | 06/09/21 |
| SALES DRAWING | PR141568 | S50142-TS | SCALE 1:4 |