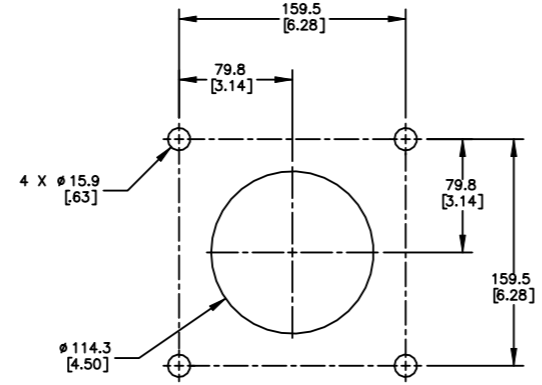
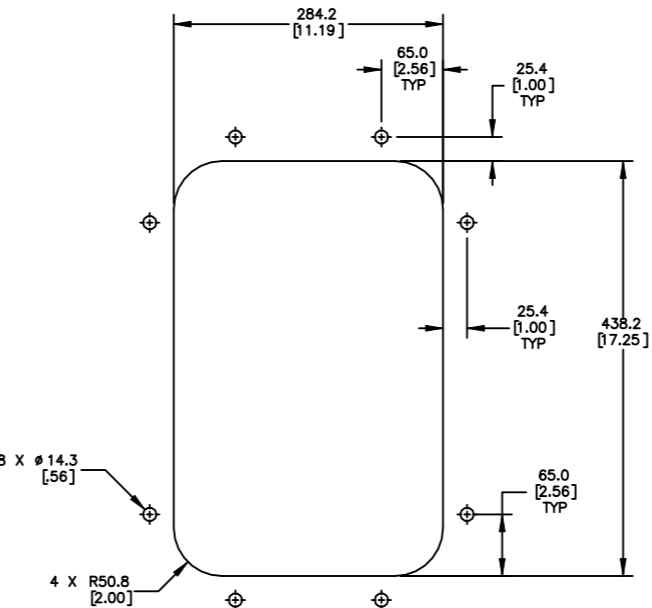


PART NUMBER	BELT WIDTH	DIM "A" FRAME LENGTH	EXTENDED FRAME LENGTH	BLADE COVERAGE
C1QCF1S18S4XXPX	457.2 [18.00]	1219.2 [48.00]	1676.4 [66.00]	355.6 [14.00]
C1QCF1S18S6XXPX	457.2 [18.00]	1219.2 [48.00]	1676.4 [66.00]	304.8 [12.00]
C1QCF1S18S8XXPX	457.2 [18.00]	1219.2 [48.00]	1676.4 [66.00]	254.0 [10.00]
C1QCF1S24S4XXPX	609.6 [24.00]	1371.6 [54.00]	1828.8 [72.00]	508.0 [20.00]
C1QCF1S24S6XXPX	609.6 [24.00]	1371.6 [54.00]	1828.8 [72.00]	457.2 [18.00]
C1QCF1S24S8XXPX	609.6 [24.00]	1371.6 [54.00]	1828.8 [72.00]	406.4 [16.00]
C1QCF1S30S4XXPX	762.0 [30.00]	1524.0 [60.00]	1981.2 [78.00]	660.4 [26.00]
C1QCF1S30S6XXPX	762.0 [30.00]	1524.0 [60.00]	1981.2 [78.00]	609.6 [24.00]
C1QCF1S30S8XXPX	762.0 [30.00]	1524.0 [60.00]	1981.2 [78.00]	558.8 [22.00]
C1QCF1S36S4XXPX	914.4 [36.00]	1676.4 [66.00]	2133.6 [84.00]	812.8 [32.00]
C1QCF1S36S6XXPX	914.4 [36.00]	1676.4 [66.00]	2133.6 [84.00]	762.0 [30.00]
C1QCF1S36S8XXPX	914.4 [36.00]	1676.4 [66.00]	2133.6 [84.00]	711.2 [28.00]
C1QCF1S42S4XXPX	1066.8 [42.00]	1828.8 [72.00]	2286.0 [90.00]	965.2 [38.00]
C1QCF1S42S6XXPX	1066.8 [42.00]	1828.8 [72.00]	2286.0 [90.00]	914.4 [36.00]
C1QCF1S42S8XXPX	1066.8 [42.00]	1828.8 [72.00]	2286.0 [90.00]	863.6 [34.00]
C1QCF1S48S4XXPX	1219.2 [48.00]	1981.2 [78.00]	2438.4 [96.00]	1117.6 [44.00]
C1QCF1S48S6XXPX	1219.2 [48.00]	1981.2 [78.00]	2438.4 [96.00]	1066.8 [42.00]
C1QCF1S48S8XXPX	1219.2 [48.00]	1981.2 [78.00]	2438.4 [96.00]	1016.0 [40.00]

BLADE COLOR CHART	
ASSEMBLY PART NO.	BLADE COLOR
C1QCHBSXXSXOX	ORANGE
C1QCHBSXXSXBX	BROWN
C1QCHBSXXSXTX	TAN
C1QCHBSXXSXGX	GREEN
C1QCHBSXXSXNX	NAVY BLUE
C1QCHBSXXSXCX	SOL YELLOW W/CERAMIC BEADS



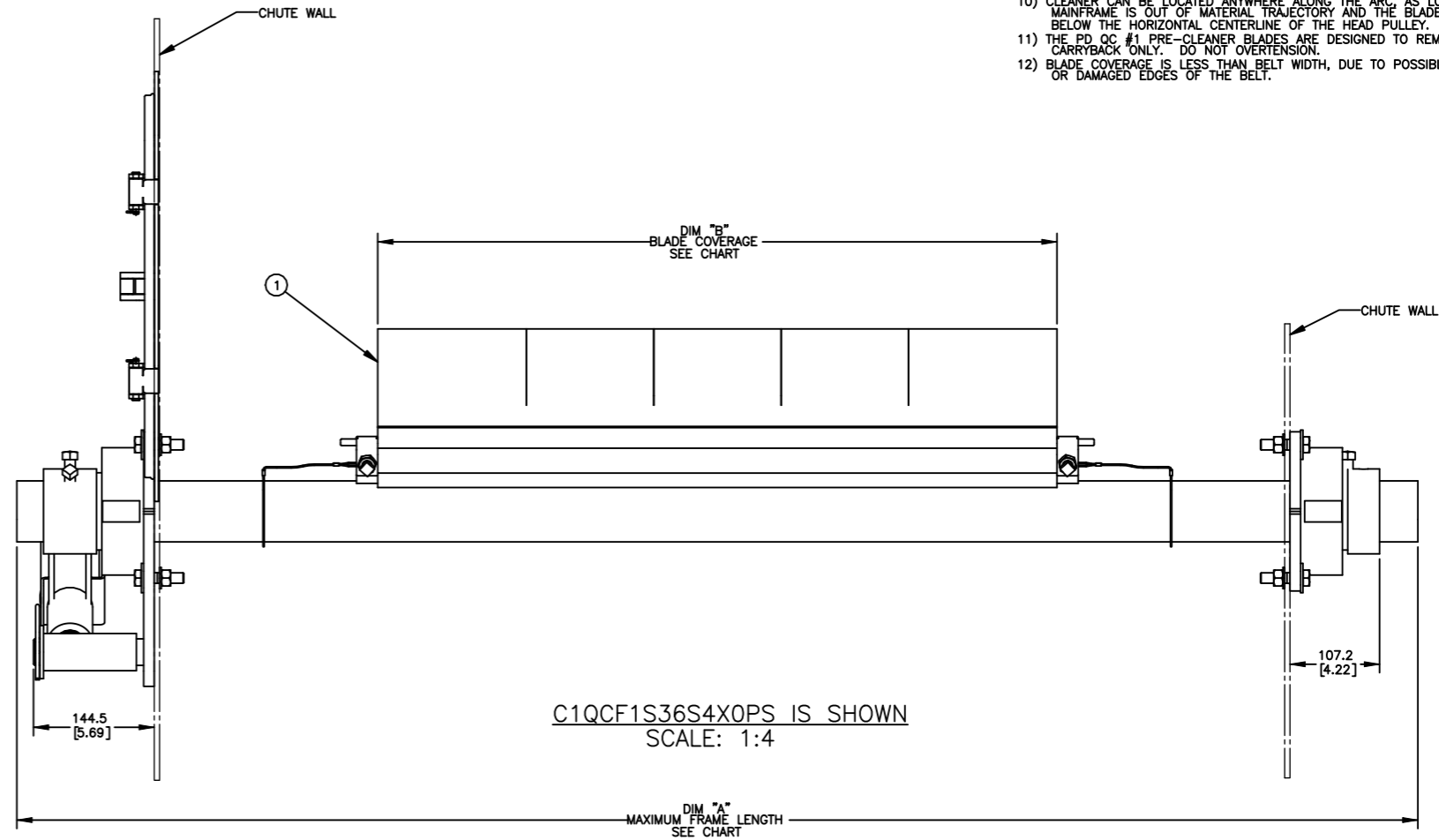
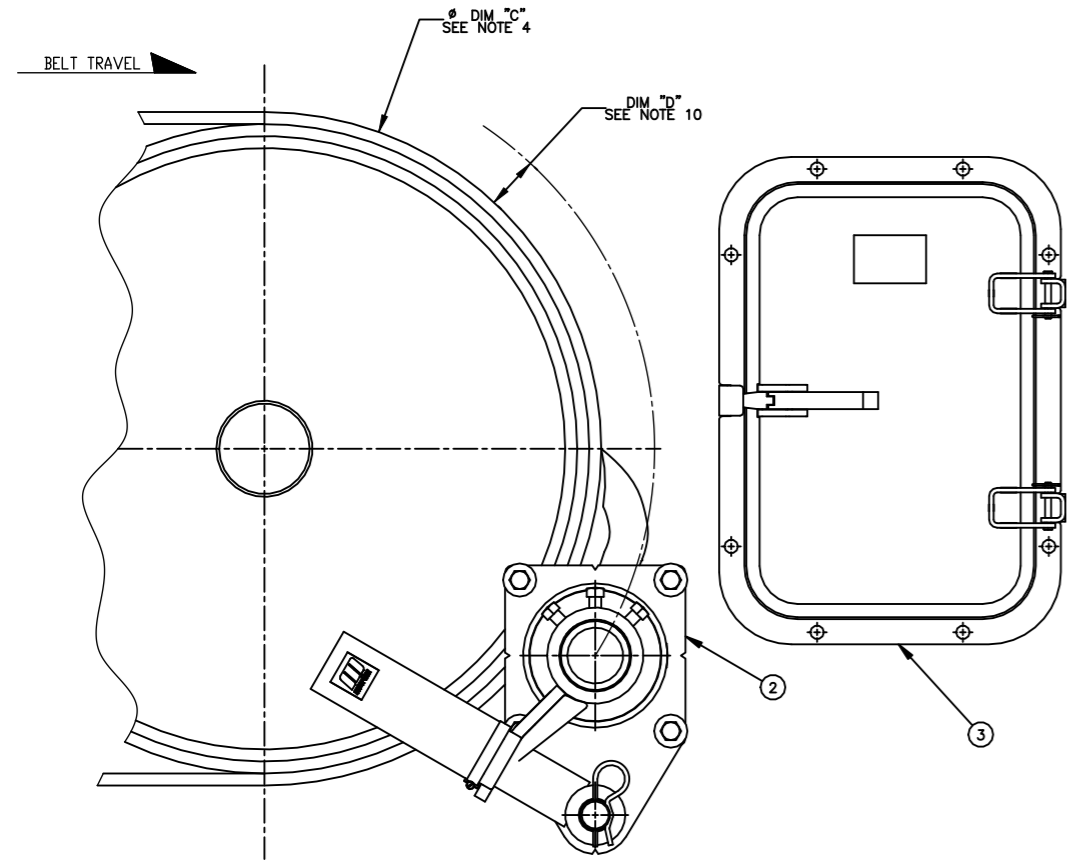
TENSIONER CHUTE CUTOUT DETAIL  
SCALE 3:8  
TYPICAL BOTH SIDES



ACCESS DOOR CUTOUT DETAIL  
SCALE 1:4

- NOTES:
- ALL DIMENSIONS ARE GIVEN IN MM [INCHES]. ALL DIMENSIONS ARE FOR REFERENCE ONLY.
  - IN THE C1QCF1 PART NUMBER THE FIRST SXX INDICATES THE BELT WIDTH IN STANDARD INCH UNITS FOR BELT WIDTHS 18-48.  
S18 = 18  
S24 = 24  
S48 = 48  
THE NEXT SX INDICATES THE LESS BELT WIDTH BLADE COVERAGE IN STANDARD INCH UNITS.  
00 = NO BLADE  
S4 = 4 LESS BELT WIDTH  
S6 = 6 LESS BELT WIDTH  
S8 = 8 LESS BELT WIDTH
  - THE FOURTH X IN THE PART NUMBER INDICATES THE BLADE COLOR:  
0 = NO BLADE  
B = BROWN  
T = TAN  
G = GREEN  
N = NAVY BLUE  
O = ORANGE  
C = YELLOW W/CERAMIC BEADS (72.00 MAX BLADE WIDTH)
  - THE FIFTH X INDICATES IF THE BLADE IS SOLID OR SEGMENTED:  
0 = SEGMENTED BLADE / NO BLADE  
1 = SOLID BLADE
  - THE P IN THE PART NUMBER INDICATES A PAINTED STEEL MAINFRAME. THE E IN THE PART NUMBER INDICATES AN EXTENDED STEEL MAINFRAME. THE LAST X INDICATES THE TENSIONER OPTION:  
BLANK = NO TENSIONER  
S = UNIVERSAL SPRING TENSIONER (38003)
  - CUT MAINFRAME TO LENGTH, WITH BLADE CENTERED ON THE BELT MEASURE. HOW FAR THE MAINFRAME IS OUTSIDE THE CHUTE WALL AND ADD 1.63 [41] MINIMUM TO CUT OFF.
  - THE PRE-CLEANER BLADE IS DESIGNED FOR HEAD PULLEY'S WITH A MINIMUM EFFECTIVE DIAMETER OF 12.00 [305].
  - CLEANER IS SHOWN IN UNRECOMMENDED WORKING POSITION.
  - WHERE EXTREME OR UNUSUAL CONDITIONS EXIST OR SPECIAL MAINFRAME LENGTHS ARE REQUIRED CONTACT MARTIN ENGINEERING.
  - SPRING TENSIONER MAY BE BOLTED OR WELDED IN PLACE. MARTIN ENGINEERING RECOMMENDS BOLTING WHEN APPLICABLE FOR EASIER MAINTENANCE AND ACCESSIBILITY.
  - REFER TO OPERATOR'S MANUAL M4171 FOR COMPLETE INSTALLATION INSTRUCTIONS.
  - FOR BELT WIDTHS 54.00 [1400-1600] AND LARGER, MARTIN ENGINEERING RECOMMENDS USING A DUAL SPRING TENSIONER (P/N 38003-2).
  - CLEANER CAN BE LOCATED ANYWHERE ALONG THE ARC, AS LONG AS THE MAINFRAME IS OUT OF MATERIAL TRAJECTORY AND THE BLADE TIPS ARE BELOW THE HORIZONTAL CENTERLINE OF THE HEAD PULLEY.
  - THE PD OC #1 PRE-CLEANER BLADES ARE DESIGNED TO REMOVE HEAVY CARRYBACK ONLY. DO NOT OVERTENSION.
  - BLADE COVERAGE IS LESS THAN BELT WIDTH, DUE TO POSSIBLE MISTRACKING OR DAMAGED EDGES OF THE BELT.

MOUNTING LOCATION CHART	
Ø DIM "C" HEAD PULLEY DIA. INCLUDING BELT AND LAGGING	DIM "D"
305 [12.00] THRU 381 [15.00]	102 [4.00]
406 [16.00] AND OVER	89 [3.50]



© Copyright 2021 Martin Engineering. All rights reserved. Covered by U.S. and foreign patents pending and issued. ® and ™ indicate trademarks of Martin Engineering.

MARTIN ENGINEERING  
NEPONSET, IL USA

NO.	DESCRIPTION	ECN	DATE	BY
C	CHGD P/N CYA-0812 TO CYA-1218 IN BOM / CHGD DOOR CUTOUT DETAIL FORM CYA-0812 TO CYA-1218	16025B	05/04/22	MH
B	IN NOTE 8: CHNGD M3798 TO M4171.	15967	09/24/21	MH
A	ADDED (C1QCHBSXXSXOX) BLADE COLOR OPTION TO CHART & (C = YELLOW W/...) OPTION TO NOTES. (PR14194)	----	06/25/21	MH

TITLE	MARTIN QC1+ PERFORMANCE DUTY W/UNIVERSAL SPRING TENSIONER 12 X 18 ACCESS DOOR	DRAWN	MH
DATE	04/23/21	CHECKED	
ENG.		DATE	06/08/21
APPROVED		DATE	06/09/21
SALES DRAWING	PR14156B	S50142-SS	SCALE 1:4