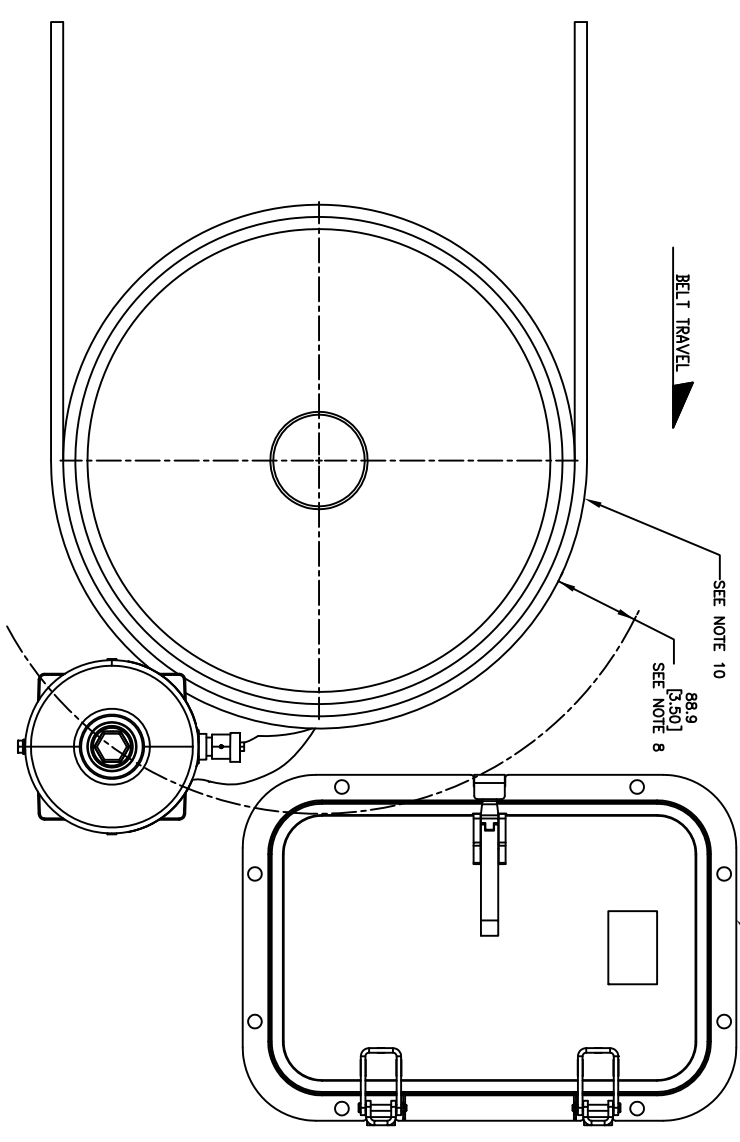


PART NUMBER	BELT WIDTH	DIMENSION "A" BLADE COVERAGE	DIMENSION "B" FRAME LENGTH
C100H35S48XXXXP	1371.6 [54.00]	1188.4 [46.00]	2133.6 [84.00]
C100H35S45XXXXP	1371.6 [54.00]	1219.2 [48.00]	2133.6 [84.00]
C100H35S42XXXXP	1371.6 [54.00]	1270.0 [50.00]	2133.6 [84.00]
C100H35S39XXXXP	1524.0 [60.00]	1320.8 [52.00]	2286.0 [90.00]
C100H35S36XXXXP	1524.0 [60.00]	1371.6 [54.00]	2286.0 [90.00]
C100H35S33XXXXP	1524.0 [60.00]	1422.4 [56.00]	2286.0 [90.00]
C100H35S30XXXXP	1676.4 [66.00]	1473.2 [58.00]	2438.4 [96.00]
C100H35S27XXXXP	1676.4 [66.00]	1524.0 [60.00]	2438.4 [96.00]
C100H35S24XXXXP	1828.8 [72.00]	1574.8 [62.00]	2438.4 [96.00]
C100H35S21XXXXP	1828.8 [72.00]	1625.6 [64.00]	2590.8 [102.00]
C100H35S18XXXXP	1828.8 [72.00]	1676.4 [66.00]	2590.8 [102.00]
C100H35S15XXXXP	1981.2 [78.00]	1727.2 [68.00]	2590.8 [102.00]
C100H35S12XXXXP	1981.2 [78.00]	1778.0 [70.00]	2743.2 [108.00]
C100H35S09XXXXP	1981.2 [78.00]	1828.8 [72.00]	2743.2 [108.00]
C100H35S06XXXXP	2133.6 [84.00]	1879.6 [74.00]	2743.2 [108.00]
C100H35S03XXXXP	2133.6 [84.00]	1930.4 [76.00]	2895.6 [114.00]
C100H35S00XXXXP	2133.6 [84.00]	2032.0 [80.00]	2895.6 [114.00]
C100H35S905XXXXP	2286.0 [90.00]	2082.8 [82.00]	3048.0 [120.00]
C100H35S805XXXXP	2286.0 [90.00]	2133.6 [84.00]	3048.0 [120.00]
C100H35S705XXXXP	2438.4 [96.00]	2184.4 [86.00]	3048.0 [120.00]
C100H35S605XXXXP	2438.4 [96.00]	2235.2 [88.00]	3200.4 [126.00]
C100H35S505XXXXP	2438.4 [96.00]	2286.0 [90.00]	3200.4 [126.00]
C100H35S405XXXXP	2590.8 [102.00]	2336.8 [92.00]	3200.4 [126.00]
C100H35S305XXXXP	2590.8 [102.00]	2387.6 [94.00]	3352.8 [132.00]
C100H35S205XXXXP	2590.8 [102.00]	2438.4 [96.00]	3352.8 [132.00]
C100H35S105XXXXP	2743.2 [108.00]	2489.2 [98.00]	3505.2 [138.00]
C100H35S05XXXXP	2743.2 [108.00]	2540.0 [100.00]	3505.2 [138.00]
C100H35S95XXXXP	2743.2 [108.00]	2590.8 [102.00]	3505.2 [138.00]
C100H35S85XXXXP	2743.2 [108.00]	2641.6 [104.00]	3505.2 [138.00]

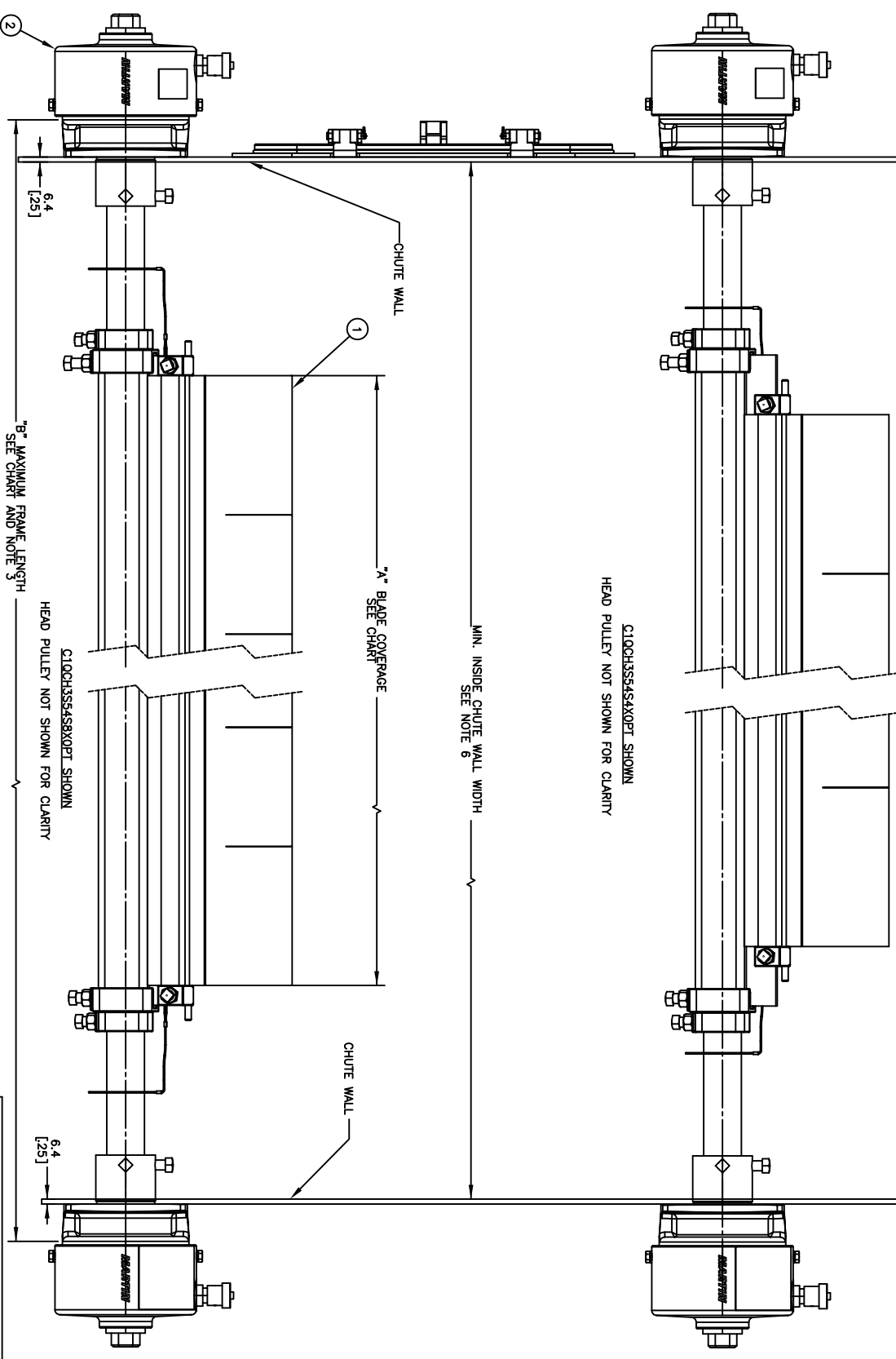
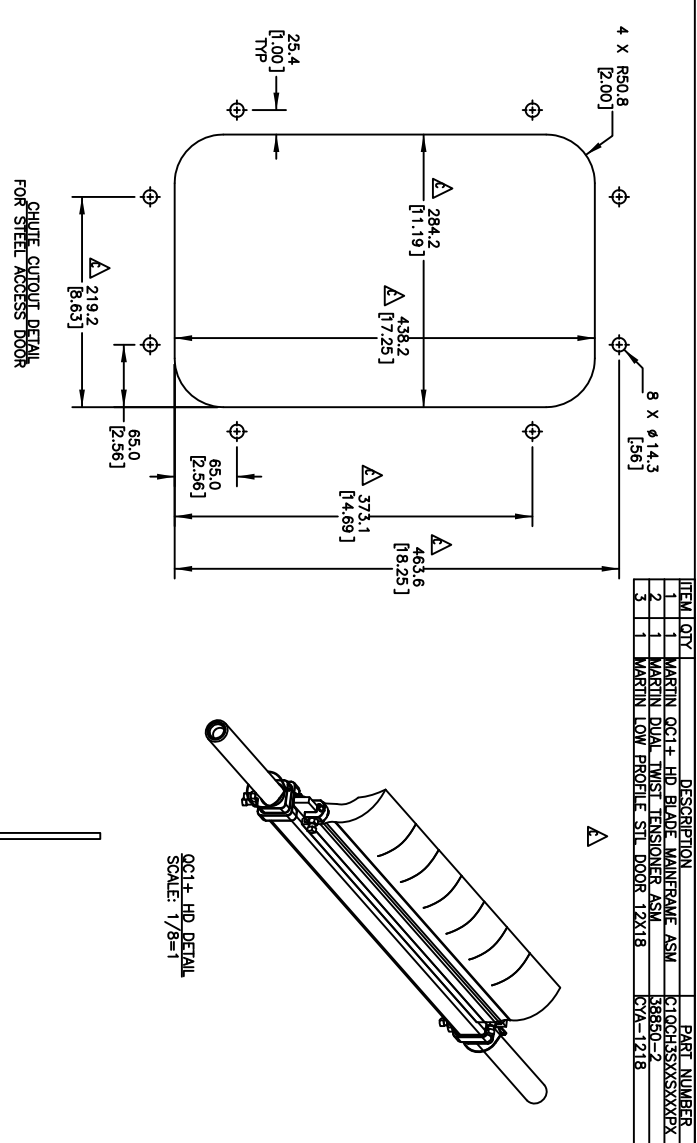
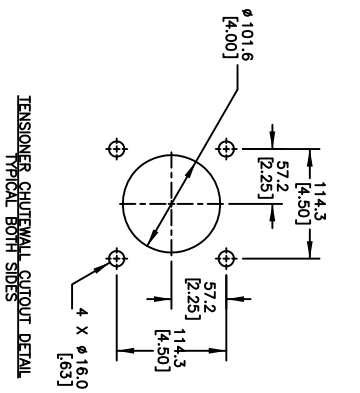
NOTES:
 1) ALL DIMENSIONS ARE GIVEN IN MILLIMETERS [INCHES] AND ARE FOR REFERENCE ONLY.
 2) IN THE C100H35 PART NUMBER THE FIRST SIXX INDICATES THE BELT WIDTH IN STANDARD INCH UNITS FOR BELT NUMBERS 54 THRU 108.

THE NEXT SIX INDICATES THE LESS BELT WIDTH BLADE COVERAGE IN STANDARD INCH UNITS.
 00 = NO BLADE
 S4 = 4 LESS BELT WIDTH
 S6 = 6 LESS BELT WIDTH
 S8 = 8 LESS BELT WIDTH
 THE FOURTH X IN THE PART NUMBER INDICATES THE BLADE COLOR:
 0 = NO BLADE
 B = BROWN
 T = TAN
 G = GREEN
 N = NAVY BLUE
 O = ORANGE
 C = YELLOW WITH CERAMIC BEADS (72.00 MAX. BLADE WIDTH)
 THE FIFTH X INDICATES IF THE BLADE IS SOLID OR SEGMENTED:
 1 = SEGMENTED BLADE / NO BLADE
 0 = SOLID BLADE / CERAMIC BLADE ONLY AVAILABLE AS SOLID
 THE P IN THE PART NUMBER INDICATES A PAINTED STEEL MAINFRAME
 BLANK = NO TENSIONER
 T = TWIST TENSIONER (38850-2)
 0 = STEEL TWIST TENSIONER (31443-2R)
 ADD AN L TO THE END OF THE PART NUMBER TO GET A CLEANER LESS THE TORQUE TUBES.

- FOR BELT WIDTHS 48 AND UNDER A SINGLE TWIST TENSIONER
- ASSEMBLY IS REQUIRED (P/N 38850). SEE S50129-TS.
- LENGTHS ARE REQUIRED CONTACT MARTIN ENGINEERING.
- INSIDE CHUTE WALL WIDTH MUST BE A MINIMUM OF BELT WIDTH PLUS 127.0 [5.00] IN ORDER FOR CLEANER TO BE INSTALLED WITH TENSIONERS BOLTED DIRECTLY TO CHUTE WALL.
- REFER TO OPERATOR'S MANUALS M3837 AND M4124 FOR INSTALLATION INSTRUCTIONS.
- CLEANER CAN BE LOCATED ANYWHERE ALONG THE ARC AS LONG AS THE MAINFRAME'S BLT OF MATERIAL FACTORY AND THE BLADE TIPS ARE BELOW THE HORIZONTAL CENTERLINE OF THE HEAD PULLEY.
- THE QC1+ HD PRE-CLEANER BLADE IS DESIGNED TO REMOVE THE INITIAL CARTRIDGE ONLY. DO NOT OVER TENSION.
- THE QC1+ HD PRE-CLEANER BLADE IS DESIGNED FOR HEAD PULLETS WITH A DIAMETER OF 406.4 [16.00] TO 558.8 [22.00].
- BLADE COVERAGE IS LESS THAN BELT WIDTH, DUE TO POSSIBLE MISTRACKING OR DAMAGED EDGES OF THE BELT.



ASSEMBLY PART NO.	COLOR
C100H35SXBXXEX	BROWN
C100H35SXKXXEX	TAN
C100H35SXGXXEX	GREEN
C100H35SXNXXEX	NAVY BLUE
C100H35SXKXXEX	ORANGE
C100H35SXKXXEX	YELLOW WITH CERAMIC BEADS



<p>Copyright 2022 Martin Engineering. All rights reserved. Covered by US and Foreign patents pending and issued. K and M indicate trademarks of Martin Engineering.</p>	
<p>MARTIN ENGINEERING NEPONSET, IL USA</p>	<p>MARTIN ENGINEERING NEPONSET, IL USA</p>
<p>MARTIN QC1+ HD 3-PC ASM W/DUAL TWIST TENS 304.8 [12.0] X 457.5 [18.0]</p>	<p>MARTIN QC1+ HD 3-PC ASM W/DUAL TWIST TENS 304.8 [12.0] X 457.5 [18.0]</p>
<p>DATE: 03/07/22 CHECKED:</p>	<p>DATE: 03/07/22 CHECKED:</p>
<p>DATE: 03/08/22 APPROVED: JMB</p>	<p>DATE: 03/08/22 APPROVED: JMB</p>
<p>SCALE: 1:4</p>	<p>SCALE: 1:4</p>

ITEM	QTY	DESCRIPTION	PART NUMBER
1	1	MARTIN QC1+ HD BLADE MAINFRAME ASM	C100H35SXBXXEX
2	1	MARTIN DUAL TWIST TENSIONER ASM	38850-2
3	1	MARTIN LOW PROFILE STL DOOR 12X18	CVA-1218