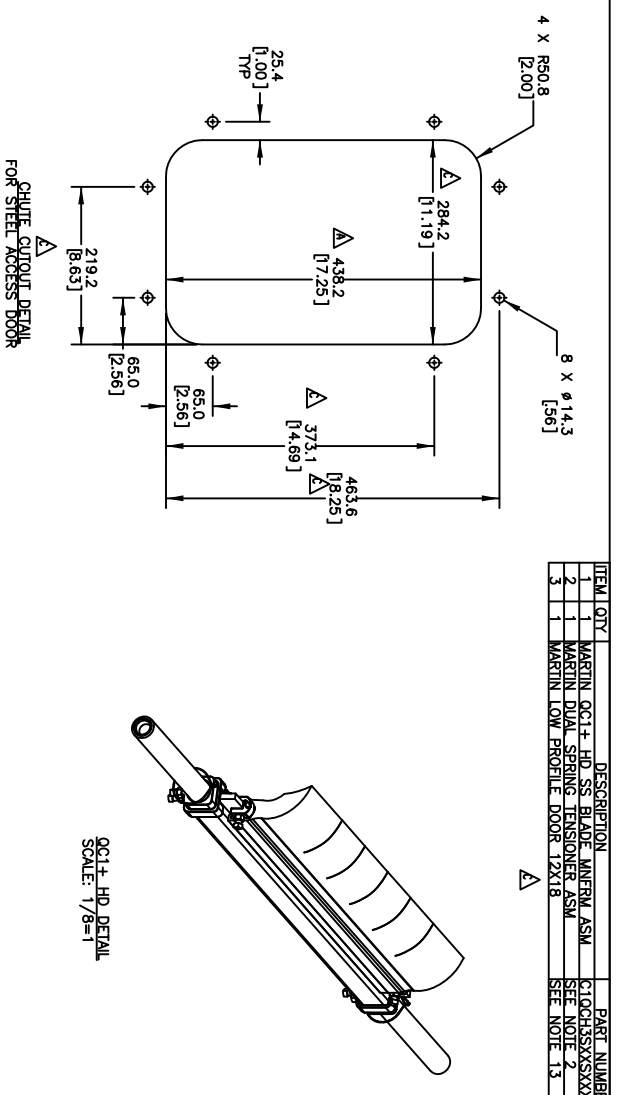
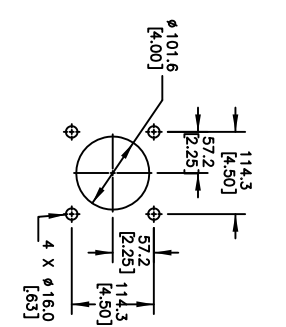


| PART NUMBER | BELT WIDTH | DIMENSION "A" BLADE COVERAGE | DIMENSION "B" FRAME LENGTH |
|------------------|-----------------|------------------------------|----------------------------|
| C10CH3SS4S8XXXP | 1371.6 [54.00] | 1188.4 [48.00] | 2133.6 [84.00] |
| C10CH3SS4S8XXXP | 1371.6 [54.00] | 1219.2 [48.00] | 2133.6 [84.00] |
| C10CH3SS4S4XXXP | 1371.6 [54.00] | 1270.0 [50.00] | 2133.6 [84.00] |
| C10CH3SS6S8XXXP | 1524.0 [60.00] | 1320.8 [52.00] | 2286.0 [90.00] |
| C10CH3SS6S8XXXP | 1524.0 [60.00] | 1422.4 [56.00] | 2286.0 [90.00] |
| C10CH3SS6S4XXXP | 1676.4 [66.00] | 1524.0 [60.00] | 2438.4 [96.00] |
| C10CH3SS6S4XXXP | 1676.4 [66.00] | 1574.8 [62.00] | 2438.4 [96.00] |
| C10CH3S72S8XXXP | 1828.8 [72.00] | 1625.6 [64.00] | 2590.8 [102.00] |
| C10CH3S72S4XXXP | 1828.8 [72.00] | 1676.4 [66.00] | 2590.8 [102.00] |
| C10CH3S76S8XXXP | 1981.2 [78.00] | 1727.2 [68.00] | 2743.2 [108.00] |
| C10CH3S76S4XXXP | 1981.2 [78.00] | 1828.8 [72.00] | 2743.2 [108.00] |
| C10CH3S84S8XXXP | 2133.6 [84.00] | 1930.4 [76.00] | 2895.6 [114.00] |
| C10CH3S84S4XXXP | 2133.6 [84.00] | 2032.0 [80.00] | 2895.6 [114.00] |
| C10CH3S90S8XXXP | 2286.0 [90.00] | 2092.8 [82.00] | 3048.0 [120.00] |
| C10CH3S90S4XXXP | 2286.0 [90.00] | 2133.6 [84.00] | 3048.0 [120.00] |
| C10CH3S96S8XXXP | 2438.4 [96.00] | 2184.4 [86.00] | 3200.4 [126.00] |
| C10CH3S96S4XXXP | 2438.4 [96.00] | 2286.0 [90.00] | 3200.4 [126.00] |
| C10CH3S102S8XXXP | 2590.8 [102.00] | 2387.6 [94.00] | 3352.8 [132.00] |
| C10CH3S102S4XXXP | 2590.8 [102.00] | 2489.2 [98.00] | 3352.8 [132.00] |
| C10CH3S108S8XXXP | 2743.2 [108.00] | 2590.8 [102.00] | 3505.2 [138.00] |
| C10CH3S108S4XXXP | 2743.2 [108.00] | 2641.6 [104.00] | 3505.2 [138.00] |

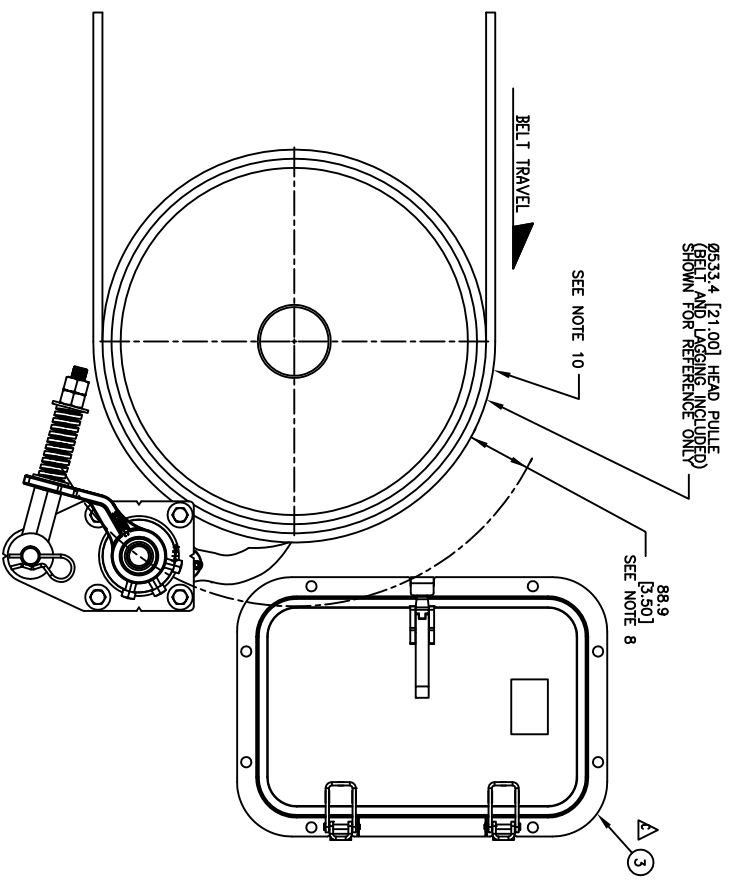
NOTES:
1) ALL DIMENSIONS ARE GIVEN IN MILLIMETERS [INCHES] AND ARE FOR REFERENCE ONLY.
2) IN THE C10CH3 PART NUMBER THE FIRST SIXX INDICATES THE BELT WIDTH IN STANDARD INCH UNITS FOR BELT WIDTHS 18 THRU 48.
554 = 54
596 = 56
5A2 = 102
5A8 = 108
C10CH3SS6S8XXXP 1524.0 [60.00] 2286.0 [90.00]
C10CH3SS6S4XXXP 1676.4 [66.00] 2438.4 [96.00]
C10CH3S72S8XXXP 1828.8 [72.00] 2590.8 [102.00]
C10CH3S72S4XXXP 1828.8 [72.00] 2590.8 [102.00]
C10CH3S76S8XXXP 1981.2 [78.00] 2743.2 [108.00]
C10CH3S76S4XXXP 1981.2 [78.00] 2743.2 [108.00]
C10CH3S84S8XXXP 2133.6 [84.00] 2895.6 [114.00]
C10CH3S84S4XXXP 2133.6 [84.00] 2895.6 [114.00]
C10CH3S90S8XXXP 2286.0 [90.00] 3048.0 [120.00]
C10CH3S90S4XXXP 2286.0 [90.00] 3048.0 [120.00]
C10CH3S96S8XXXP 2438.4 [96.00] 3200.4 [126.00]
C10CH3S96S4XXXP 2438.4 [96.00] 3200.4 [126.00]
C10CH3S102S8XXXP 2590.8 [102.00] 3352.8 [132.00]
C10CH3S102S4XXXP 2590.8 [102.00] 3352.8 [132.00]
C10CH3S108S8XXXP 2743.2 [108.00] 3505.2 [138.00]
C10CH3S108S4XXXP 2743.2 [108.00] 3505.2 [138.00]

THE NEXT SIX INDICATES THE LESS BELT WIDTH BLADE COVERAGE IN STANDARD INCH UNITS.
00 = NO BLADE
54 = 4 LESS BELT WIDTH
56 = 6 LESS BELT WIDTH
58 = 8 LESS BELT WIDTH
THE FOURTH X IN THE PART NUMBER INDICATES THE BLADE COLOR:
0 = NO BLADE
B = BROWN
T = TAN
G = GREEN
N = NAVY BLUE
O = ORANGE
C = YELLOW WITH CERAMIC BEADS
THE FIFTH X INDICATES IF THE BLADE IS SOLID OR SEGMENTED:
0 = SEGMENTED BLADE / NO BLADE
1 = SOLID BLADE / CERAMIC BLADE ONLY AVAILABLE AS SOLID
THE LAST X INDICATES THE TENSIONER OPTIONS:
BLANK = NO TENSIONER
P = STAINLESS SPRING TENSIONER (38180-2SS)
S = PAINTED SPRING TENSIONER (38180-2) ADD AN L TO THE END OF THE PART NUMBER TO GET A CLEANER LESS THE TORQUE TUBES.
3) THE FRAME IS ADJUSTABLE TO DESIRED LENGTH.
4) FOR BELT WIDTHS 48 AND UNDER A SINGLE SPRING TENSIONER ASSEMBLY IS REQUIRED. SEE S50129-SSS.
5) WHERE EXTREME OR UNUSUAL CONDITIONS EXIST, OR SPECIAL MAINFRAME LENGTHS ARE REQUIRED CONTACT MARTIN ENGINEERING.
6) INSIDE CHUTE WALL WIDTH MUST BE A MINIMUM OF BELT WIDTH PLUS BOLTED DIRECTLY TO CHUTE WALL.
7) REFER TO OPERATOR'S MANUALS M3837 AND M4124 FOR INSTALLATION INSTRUCTIONS.
8) CLEANER CAN BE LOCATED ANYWHERE ALONG THE ARC AS LONG AS THE MAINFRAME IS OUT OF MATERIAL TRAJECTORY AND THE BLADE TIPS ARE BELOW THE HORIZONTAL CENTRELINER OF THE HEAD PULLEY.
9) THE OC1+ HD PRE-CLEANER BLADE IS DESIGNED TO REMOVE THE INITIAL CARRYBACK ONLY. DO NOT OVER TENSION.
10) THE OC1+ HD PRE-CLEANER BLADE IS DESIGNED FOR HEAD PULLEYS WITH A DIAMETER OF 406.4 [16.00] TO 356.8 [22.00].
11) BLADE COVERAGE IS LESS THAN BELT WIDTH, DUE TO POSSIBLE MISTRACKING OR DAMAGED EDGES OF THE BELT.
12) INSIDE CHUTE WALL WIDTH MUST BE A MINIMUM OF BELT WIDTH PLUS 127.0 [5.00] IN ORDER FOR CLEANER TO BE INSTALLED WITH TENSIONERS BOLTED DIRECTLY TO THE CHUTE WALL.
13) P/N'S FOR 12 X 18 DOOR: CVA-1218
 PAINTED STEEL DOOR: CVA1218C
 304 SS DOOR: CVA-1218S

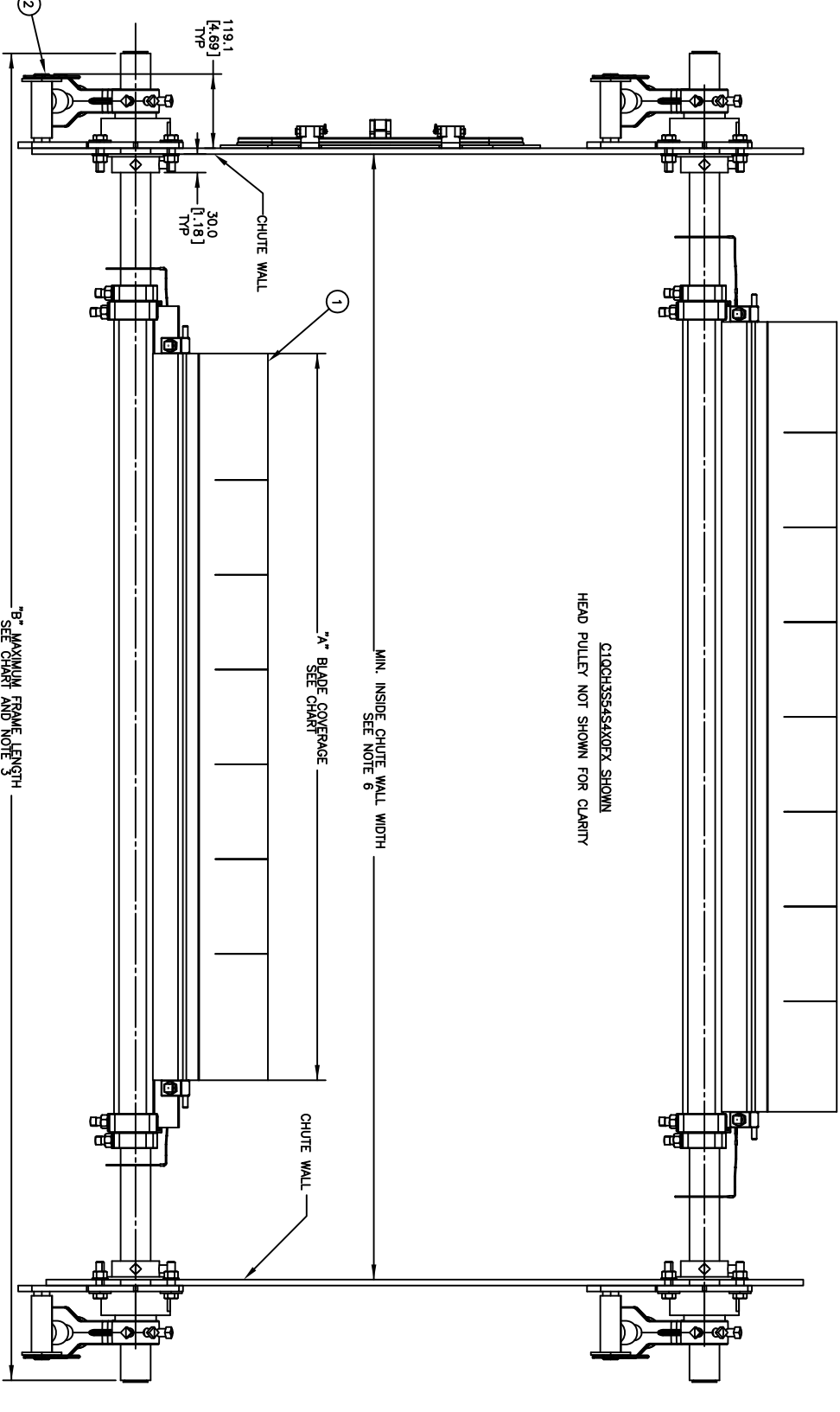
| ASSEMBLY PART NO. | COLOR |
|-------------------|---------------------------|
| C10CH3SSXXXBXP | BROWN |
| C10CH3SSXXXGXP | TAN |
| C10CH3SSXXXKXP | GREEN |
| C10CH3SSXXXNXP | NAVY BLUE |
| C10CH3SSXXXOPXP | ORANGE |
| C10CH3SSXXXCPXP | YELLOW WITH CERAMIC BEADS |



| ITEM QTY | DESCRIPTION | PART NUMBER |
|----------|---------------------------------------|-----------------|
| 2 | MARTIN OC1+ HD SS BLADE MAINFRAME ASM | C10CH3SS4S8XXXP |
| 1 | MARTIN DUAL SPRING TENSIONER ASM | SEE NOTE 2 |
| 3 | MARTIN LOW PROFILE DOOR 12X18 | SEE NOTE 13 |



9533.4 [21.00] HEAD PULLEY (BLADE AND LASSING INCLUDED) SHOWN FOR REFERENCE ONLY
SEE NOTE 10
88.9 [3.50]
SEE NOTE 8
3



MIN. INSIDE CHUTE WALL WIDTH SEE NOTE 6
7" BLADE COVERAGE SEE CHART AND NOTE 3
B" MAXIMUM FRAME LENGTH SEE CHART AND NOTE 3
HEAD PULLEY NOT SHOWN FOR CLARITY
C10CH3SS4S8XXXP

© Copyright 2022 Martin Engineering. All rights reserved. Created by US and Foreign patents pending and issued. CD and TB indicate trademarks of Martin Engineering.

MARTIN ENGINEERING
 NEPONSET, IL USA

| | | | |
|--------|--|-----|-------------|
| REWORK | IN SOLUTIONS, CHECK PER 3 DESCRIPTION IN | | |
| REV | DATE | BY | DESCRIPTION |
| C | 01/07/22 | JMB | ... |

UNLESS OTHERWISE SPECIFIED, TOLERANCES IN MM [INCH]: SURFACE FINISH: 125/
 DIMENSIONS ARE IN MM [INCH]: ANGLE: 4:1
 DIMENSIONS FOR REFERENCE ONLY.
 SUFFICES SAME SIZE DATED 03/14/19

PRI3733

SCALE: 3:16