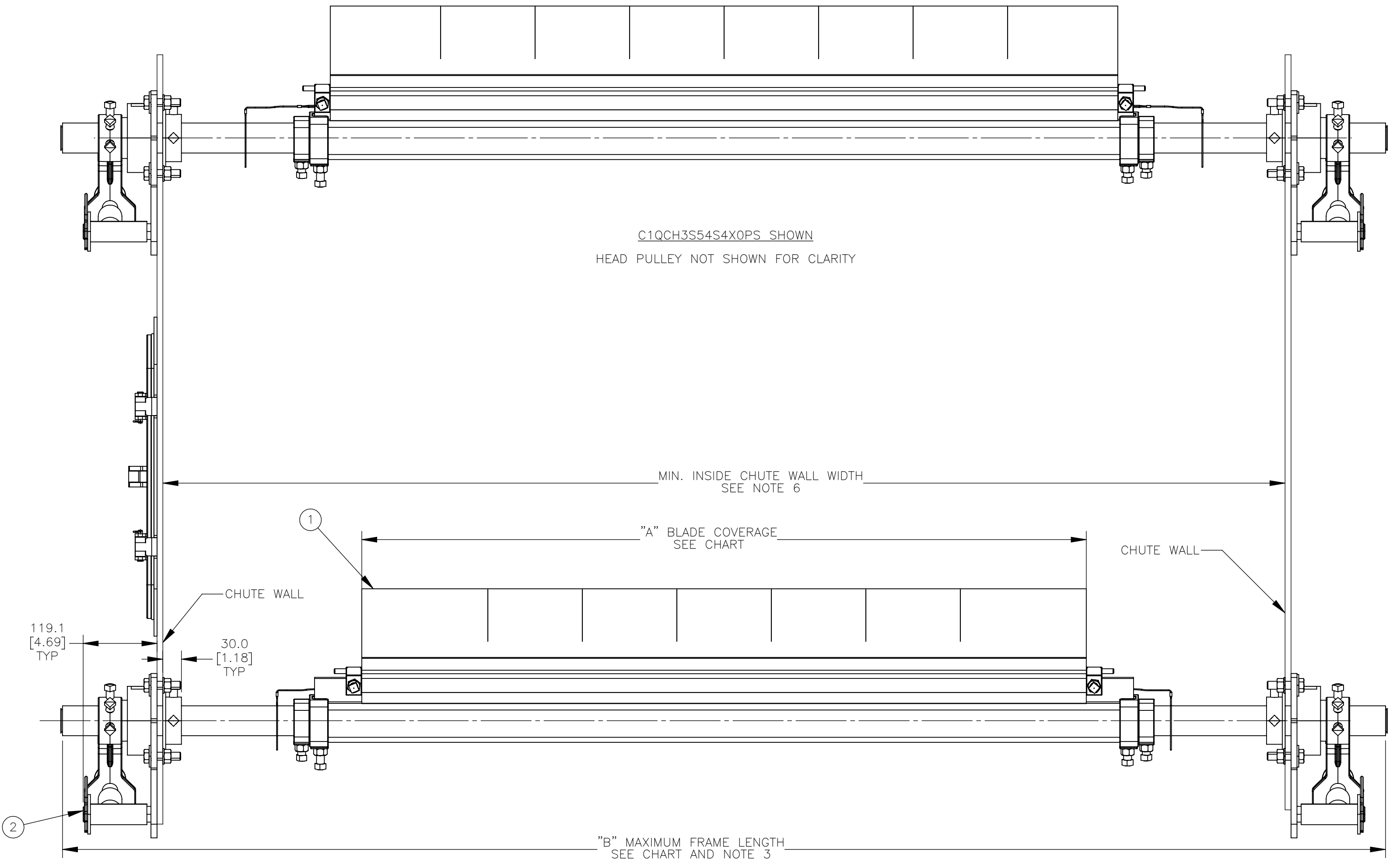
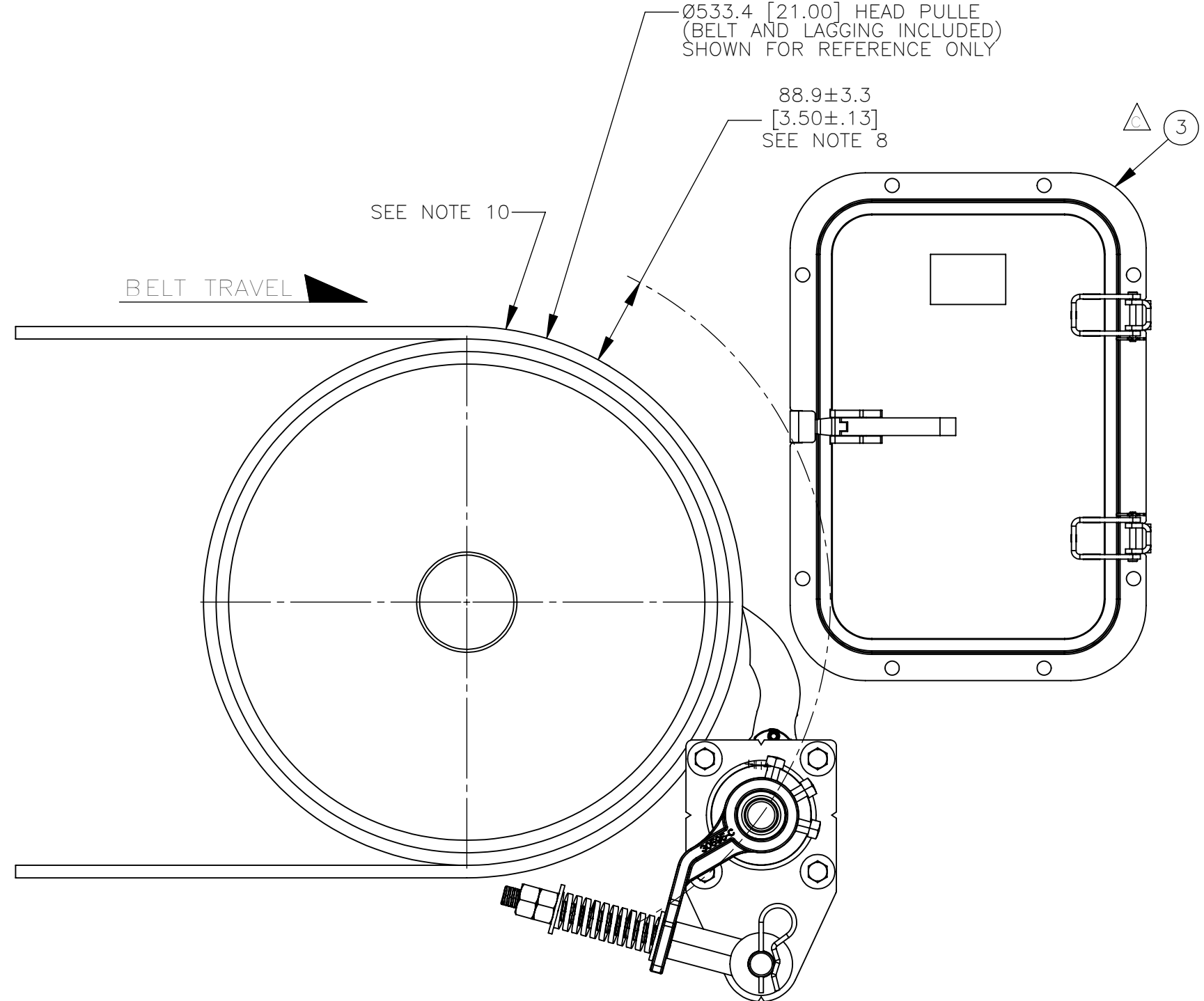
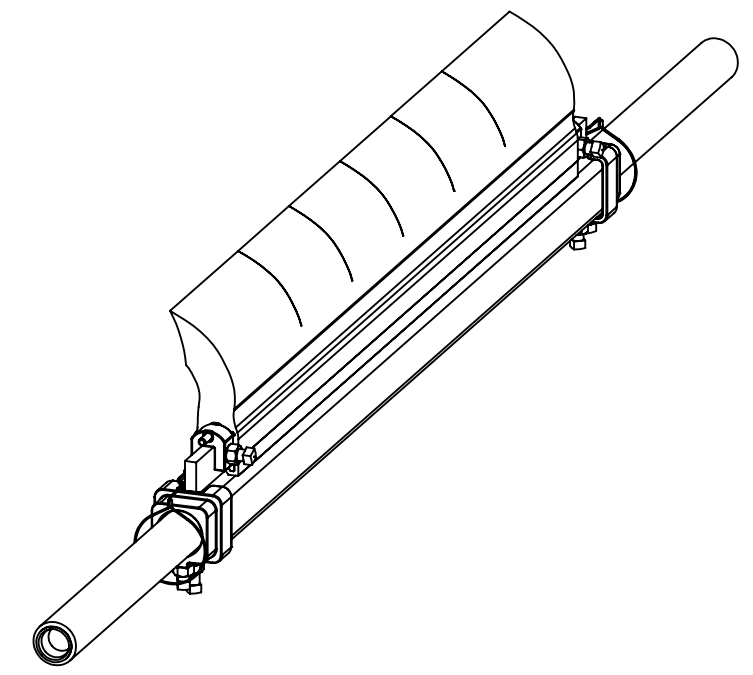
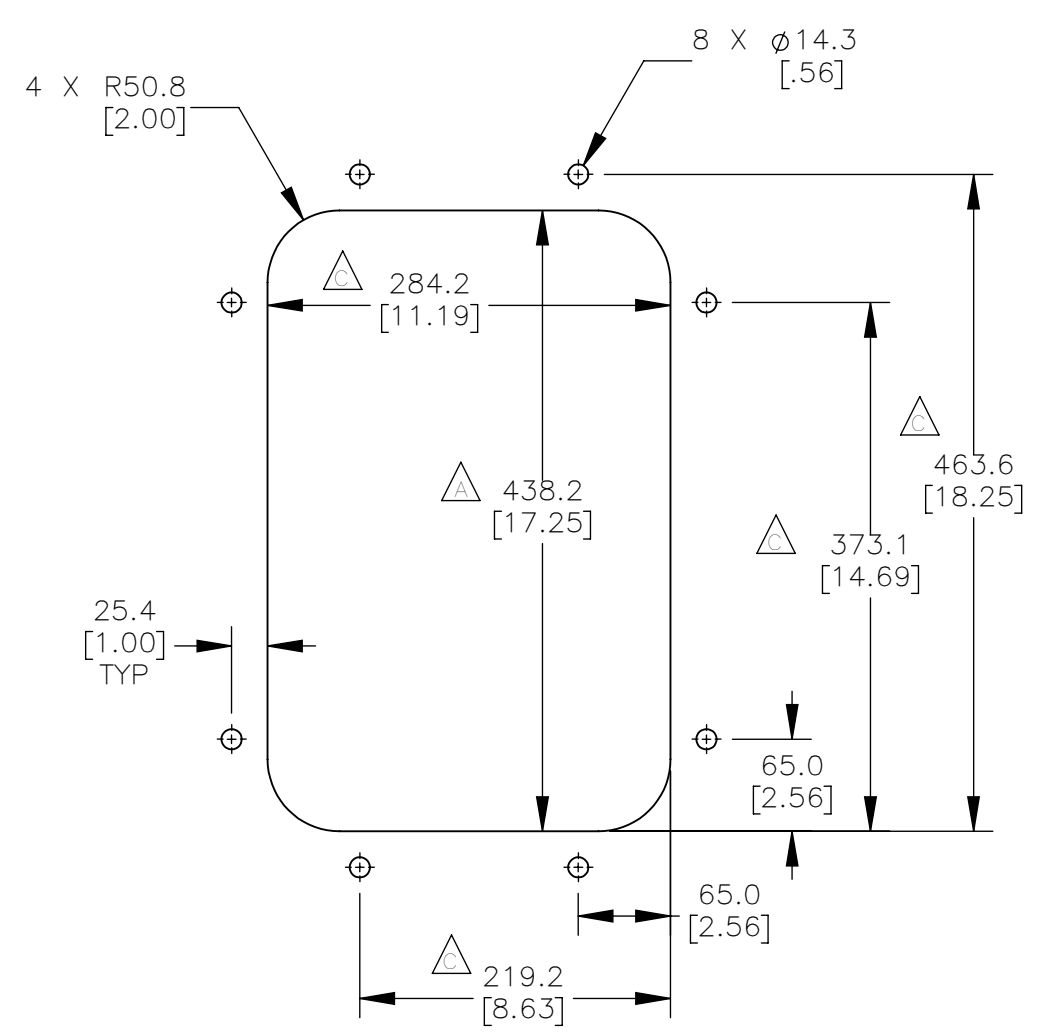
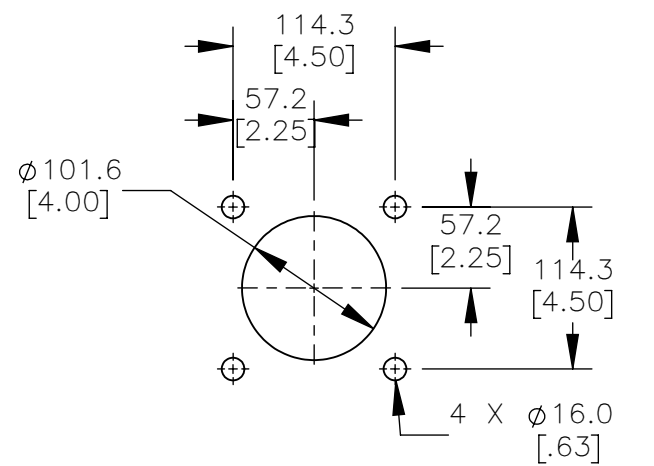


PART NUMBER	BELT WIDTH	DIMENSION "A" BLADE COVERAGE	DIMENSION "B" FRAME LENGTH
C1QCH3S54S8XXPX	1371.6 [54.00]	1168.4 [46.00]	2133.6 [84.00]
C1QCH3S54S6XXPX	1371.6 [54.00]	1219.2 [48.00]	2133.6 [84.00]
C1QCH3S54S4XXPX	1371.6 [54.00]	1270.0 [50.00]	2133.6 [84.00]
C1QCH3S60S8XXPX	1524.0 [60.00]	1320.8 [52.00]	2286.0 [90.00]
C1QCH3S60S6XXPX	1524.0 [60.00]	1371.6 [54.00]	2286.0 [90.00]
C1QCH3S60S4XXPX	1524.0 [60.00]	1422.4 [56.00]	2286.0 [90.00]
C1QCH3S66S8XXPX	1676.4 [66.00]	1473.2 [58.00]	2438.4 [96.00]
C1QCH3S66S6XXPX	1676.4 [66.00]	1524.0 [60.00]	2438.4 [96.00]
C1QCH3S66S4XXPX	1676.4 [66.00]	1574.8 [62.00]	2438.4 [96.00]
C1QCH3S72S8XXPX	1828.8 [72.00]	1625.6 [64.00]	2590.8 [102.00]
C1QCH3S72S6XXPX	1828.8 [72.00]	1676.4 [66.00]	2590.8 [102.00]
C1QCH3S72S4XXPX	1828.8 [72.00]	1727.2 [68.00]	2590.8 [102.00]
C1QCH3S78S8XXPX	1981.2 [78.00]	1778.0 [70.00]	2743.2 [108.00]
C1QCH3S78S6XXPX	1981.2 [78.00]	1828.8 [72.00]	2743.2 [108.00]
C1QCH3S78S4XXPX	1981.2 [78.00]	1879.6 [74.00]	2743.2 [108.00]
C1QCH3S84S8XXPX	2133.6 [84.00]	1930.4 [76.00]	2895.6 [114.00]
C1QCH3S84S6XXPX	2133.6 [84.00]	1981.2 [78.00]	2895.6 [114.00]
C1QCH3S84S4XXPX	2133.6 [84.00]	2032.0 [80.00]	2895.6 [114.00]
C1QCH3S90S8XXPX	2286.0 [90.00]	2082.8 [82.00]	3048.0 [120.00]
C1QCH3S90S6XXPX	2286.0 [90.00]	2133.6 [84.00]	3048.0 [120.00]
C1QCH3S90S4XXPX	2286.0 [90.00]	2184.4 [86.00]	3048.0 [120.00]
C1QCH3S96S8XXPX	2438.4 [96.00]	2235.2 [88.00]	3200.4 [126.00]
C1QCH3S96S6XXPX	2438.4 [96.00]	2286.0 [90.00]	3200.4 [126.00]
C1QCH3S96S4XXPX	2438.4 [96.00]	2336.8 [92.00]	3200.4 [126.00]
C1QCH3SA2S8XXPX	2590.8 [102.00]	2387.6 [94.00]	3352.8 [132.00]
C1QCH3SA2S6XXPX	2590.8 [102.00]	2438.4 [96.00]	3352.8 [132.00]
C1QCH3SA2S4XXPX	2590.8 [102.00]	2489.2 [98.00]	3352.8 [132.00]
C1QCH3SA8S8XXPX	2743.2 [108.00]	2540.0 [100.00]	3505.2 [138.00]
C1QCH3SA8S6XXPX	2743.2 [108.00]	2590.8 [102.00]	3505.2 [138.00]
C1QCH3SA8S4XXPX	2743.2 [108.00]	2641.6 [104.00]	3505.2 [138.00]

- NOTES:
- ALL DIMENSIONS ARE GIVEN IN MILLIMETERS [INCHES] AND ARE FOR REFERENCE ONLY.
 - IN THE C1QCH3 PART NUMBER THE FIRST SX INDICATES THE BELT WIDTH IN STANDARD INCH UNITS FOR BELT WIDTHS 54 THRU 108.
 S54 = 54
 S96 = 96
 SA2 = 102
 SA8 = 108
 THE NEXT SX INDICATES THE LESS BELT WIDTH BLADE COVERAGE IN STANDARD INCH UNITS.
 00 = NO BLADE
 S4 = 4 LESS BELT WIDTH
 S6 = 6 LESS BELT WIDTH
 S8 = 8 LESS BELT WIDTH
 THE FOURTH X IN THE PART NUMBER INDICATES THE BLADE COLOR:
 0 = NO BLADE
 B = BROWN
 T = TAN
 G = GREEN
 N = NAVY BLUE
 O = ORANGE
 C = YELLOW WITH CERAMIC BEADS
 THE FIFTH X INDICATES IF THE BLADE IS SOLID OR SEGMENTED:
 0 = SEGMENTED BLADE / NO BLADE
 1 = SOLID BLADE / CERAMIC BLADE ONLY AVAILABLE AS SOLID
 THE P IN THE PART NUMBER INDICATES A PAINTED STEEL MAINFRAME
 THE LAST X INDICATES THE TENSIONER OPTIONS:
 BLANK = NO TENSIONER
 S = SPRING TENSIONER (38180-2)
 P = STAINLESS STEEL SPRING TENSIONER (38180-2SS)
 ADD AN L TO THE END OF THE PART NUMBER TO GET A CLEANER LESS THE TORQUE TUBES.
 - THE FRAME IS ADJUSTABLE TO DESIRED LENGTH.
 - FOR BELT WIDTHS 48 AND UNDER A SINGLE SPRING TENSIONER ASSEMBLY IS REQUIRED (P/N 38180). SEE S50129-SS.
 - WHERE EXTREME OR UNUSUAL CONDITIONS EXIST, OR SPECIAL MAINFRAME LENGTHS ARE REQUIRED CONTACT MARTIN ENGINEERING.
 - INSIDE CHUTE WALL WIDTH MUST BE A MINIMUM OF BELT WIDTH PLUS 127.0 [5.00] IN ORDER FOR CLEANER TO BE INSTALLED WITH TENSIONERS BOLTED DIRECTLY TO CHUTE WALL.
 - REFER TO OPERATOR'S MANUALS M3837 AND M4124 FOR INSTALLATION INSTRUCTIONS.
 - CLEANER CAN BE LOCATED ANYWHERE ALONG THE ARC, AS LONG AS THE MAINFRAME IS OUT OF MATERIAL TRAJECTORY AND THE BLADE TIPS ARE BELOW THE HORIZONTAL CENTERLINE OF THE HEAD PULLEY.
 - THE QC1+ HD PRE-CLEANER BLADE IS DESIGNED TO REMOVE THE INITIAL CARRYBACK ONLY. DO NOT OVER TENSION.
 - THE QC1+ HD PRE-CLEANER BLADE IS DESIGNED FOR HEAD PULLEYS WITH A DIAMETER OF 406.4 [16.00] TO 558.8 [22.00].
 - BLADE COVERAGE IS LESS THAN BELT WIDTH, DUE TO POSSIBLE MISTRACKING OR DAMAGED EDGES OF THE BELT.
 - INSIDE CHUTE WALL WIDTH MUST BE A MINIMUM OF BELT WIDTH PLUS 127.0 [5.00] IN ORDER FOR CLEANER TO BE INSTALLED WITH TENSIONERS BOLTED DIRECTLY TO THE CHUTE WALL.

ASSEMBLY PART NO.	COLOR
C1QCH3SXSSXBXPX	BROWN
C1QCH3SXSSXTXPX	TAN
C1QCH3SXSSXGXPX	GREEN
C1QCH3SXSSXNXPX	NAVY BLUE
C1QCH3SXSSXOPX	ORANGE
C1QCH3SXSSXC1PX	YELLOW WITH CERAMIC BEADS



REV	DESCRIPTION	ECN	DATE	BY
D	ADDED STAINLESS STEEL TENSIONER OPTION TO NOTE 1	16100	05/03/22	JAH
C	REDRAWN IN SOLIDWORKS; CHG'D ITEM 3 P/N CVA-0912 TO CYA-1218; DIM 209.6 TO 284.2, 289.1 TO 438.2, 224.0 TO 373.1, 314.5 TO 463.6, 144.5 TO 219.2; IN TITLE BLOCK; CHG '228.6(9.0) X 304.8(12.0)' TO '304.8(12.0) X 457.5(18.0)'; RWD TWTG TENSIONER OPTION IN NOTE 2; UPDATE PICTORIALLY	16025	01/07/22	JRB

MATERIAL:	FINISH: -	WEIGHT: -
UNLESS OTHERWISE SPECIFIED	TOLERANCES IN MM [INCH]:	SURFACE FINISH: 12.5
DIMENSIONS ARE IN MM [INCH]	.X = ±	ANGULAR: ±1
DIMENSIONS FOR REFERENCE ONLY	.XX = ±	DRAFT ANGLE: -
	.XXX = ±	

DRAWN	JRB	DATE	01/07/22
CHECKED		DATE	03/08/22
ENG.	JRB	DATE	03/08/22
I.E.	JRB	DATE	03/08/22
APPROVED	JRB	DATE	03/08/22
SCALE	3:16		

TITLE	MARTIN QC1+ HD 3-PC ASM W/SPRING TENS 304.8[12.0] X 457.5[18.0]
DRAWING NUMBER	PR13753
DESCRIPTION	MARTIN ENGINEERING NEPONSET, IL USA
DATE	05/02/19