

(PART NUMBER 2ND & 3RD XX'S) NUMBER OF ELEMENTS		
PART NUMBER	DIM "A"	# ELEMENTS
C1CXS07XRNNXX	245 [9.65]	7
C1CXS08XRNNXX	280 [11.02]	8
C1CXS09XRNNXX	315 [12.40]	9
C1CXS10XRNNXX	350 [13.78]	10
C1CXS11XRNNXX	385 [15.16]	11
C1CXS12XRNNXX	420 [16.54]	12
C1CXS13XRNNXX	455 [17.91]	13
C1CXS14XRNNXX	490 [19.29]	14
C1CXS15XRNNXX	525 [20.67]	15
C1CXS16XRNNXX	560 [22.05]	16
C1CXS17XRNNXX	595 [23.43]	17
C1CXS18XRNNXX	630 [24.80]	18
C1CXS19XRNNXX	665 [26.18]	19
C1CXS20XRNNXX	700 [27.56]	20
C1CXS21XRNNXX	735 [28.94]	21
C1CXS22XRNNXX	770 [30.32]	22
C1CXS23XRNNXX	805 [31.69]	23
C1CXS24XRNNXX	840 [33.07]	24
C1CXS25XRNNXX	875 [34.45]	25
C1CXS26XRNNXX	910 [35.83]	26
C1CXS27XRNNXX	945 [37.21]	27
C1CXS28XRNNXX	980 [38.58]	28
C1CXS29XRNNXX	1015 [39.96]	29
C1CXS30XRNNXX	1050 [41.34]	30
C1CXS31XRNNXX	1085 [42.72]	31
C1CXS32XRNNXX	1120 [44.10]	32
C1CXS33XRNNXX	1155 [45.47]	33
C1CXS34XRNNXX	1190 [46.85]	34
C1CXS35XRNNXX	1225 [48.23]	35
C1CXS36XRNNXX	1260 [49.61]	36
C1CXS37XRNNXX	1295 [50.99]	37
C1CXS38XRNNXX	1330 [52.36]	38
C1CXS39XRNNXX	1365 [53.74]	39
C1CXS40XRNNXX	1400 [55.12]	40

(PART NUMBER 4TH X) BLADE CARBIDE TYPE APPLICATION	
C1CXSXXARNNXX	STANDARD/MODERATE VERSION, SUITABLE FOR ABRASIVE MATERIALS AND LOW/MEDIUM BELT SPEEDS, ALLOWED FOR MECHANICAL SPLICES, HAS CHEMICAL RESISTANCE
C1CXSXXBRNNXX	SEVERE VERSION, SUITABLE FOR HIGHLY ABRASIVE MATERIALS AND HIGH BELT SPEEDS, ALLOWED FOR MECHANICAL SPLICES
C1CXSXXQRNNXX	EXTREME VERSION, SUITABLE FOR EXTREMELY ABRASIVE MATERIALS AND HIGHEST BELT SPEEDS, NOT ALLOWED FOR MECHANICAL SPLICES

(PART NUMBER LAST TWO XX'S) TENSIONER/INSTALLATION KIT REQUIREMENTS AND MATERIAL		
PART NUMBER	SINGLE/DUAL TENSIONER/TENSIONER SIZE/INSTALLATION KIT MATERIAL	P/N INSTALLATION KIT
C1CSSXXRXN2T	SINGLE MULTIFUNCTIONAL 2.8KN DUAL COIL TENSIONER WITH FIXED POINT MNT BRKT STL	C1CT2ST
C1CSSXXRXN2S	SINGLE MULTIFUNCTIONAL 2.8KN DUAL COIL TENSIONER WITH FIXED POINT MNT BRKT SS	C1CT2SS
C1CBSXXRXN__	NO TENSIONER/BLADE ONLY FOR SINGLE TENSIONER	-----

ITEM	QTY.	DESCRIPTION	PART NUMBER
1	1	MARTIN CLEANSRAPE CLEANER ASSEMBLY	SEE CHARTS

(PART NUMBER 5TH X) SWAGE SLEEVES/THIMBLES MATERIAL	
PART NUMBER	SWAGE SLEEVES/THIMBLES MATERIAL
C1CXSXXRANXX	ALUMINUM SWAGE SLEEVES/GALV THIMBLES
C1CXSXXRQNX	COPPER SWAGE SLEEVES/SS THIMBLES

INSTALLATION NOTES:

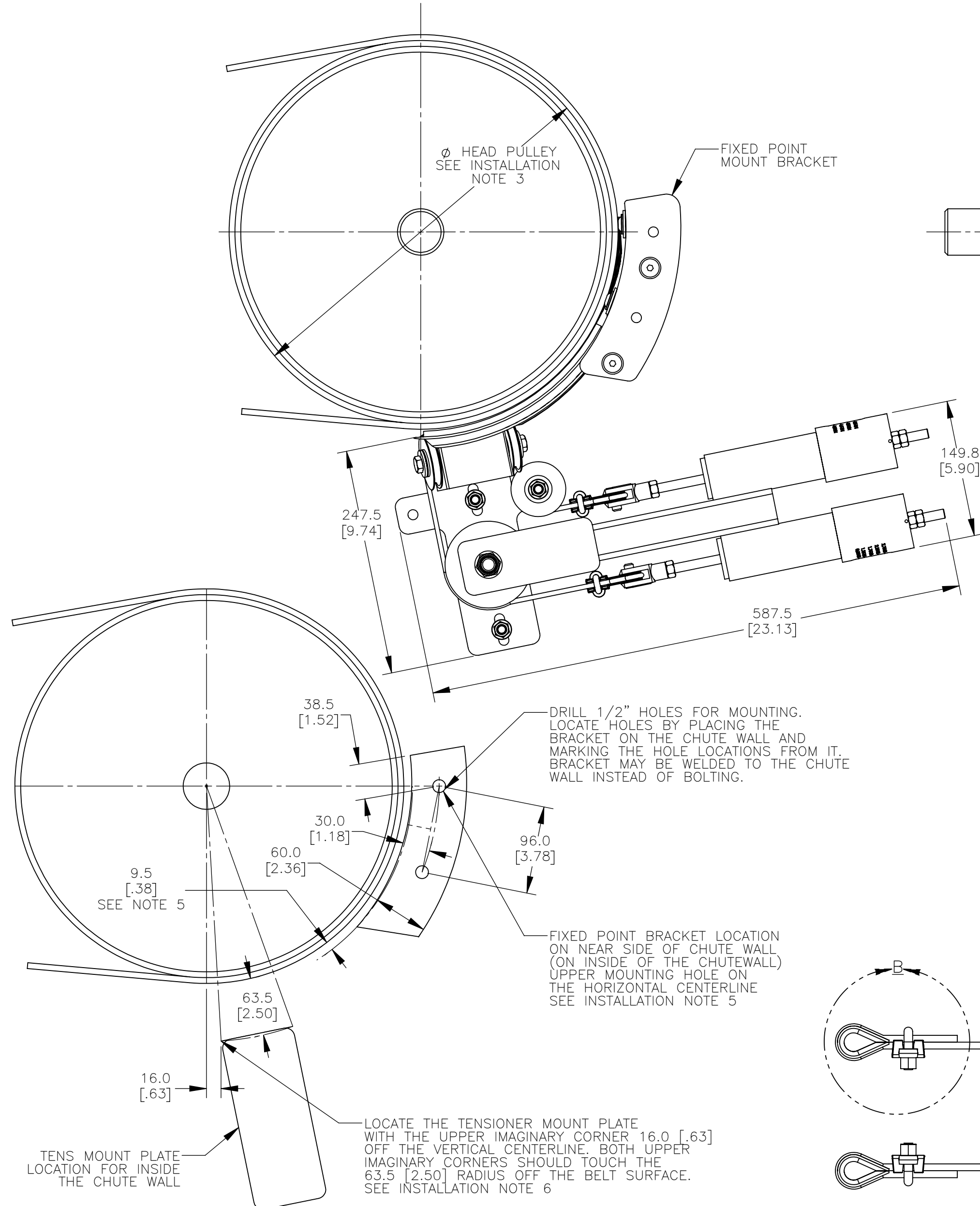
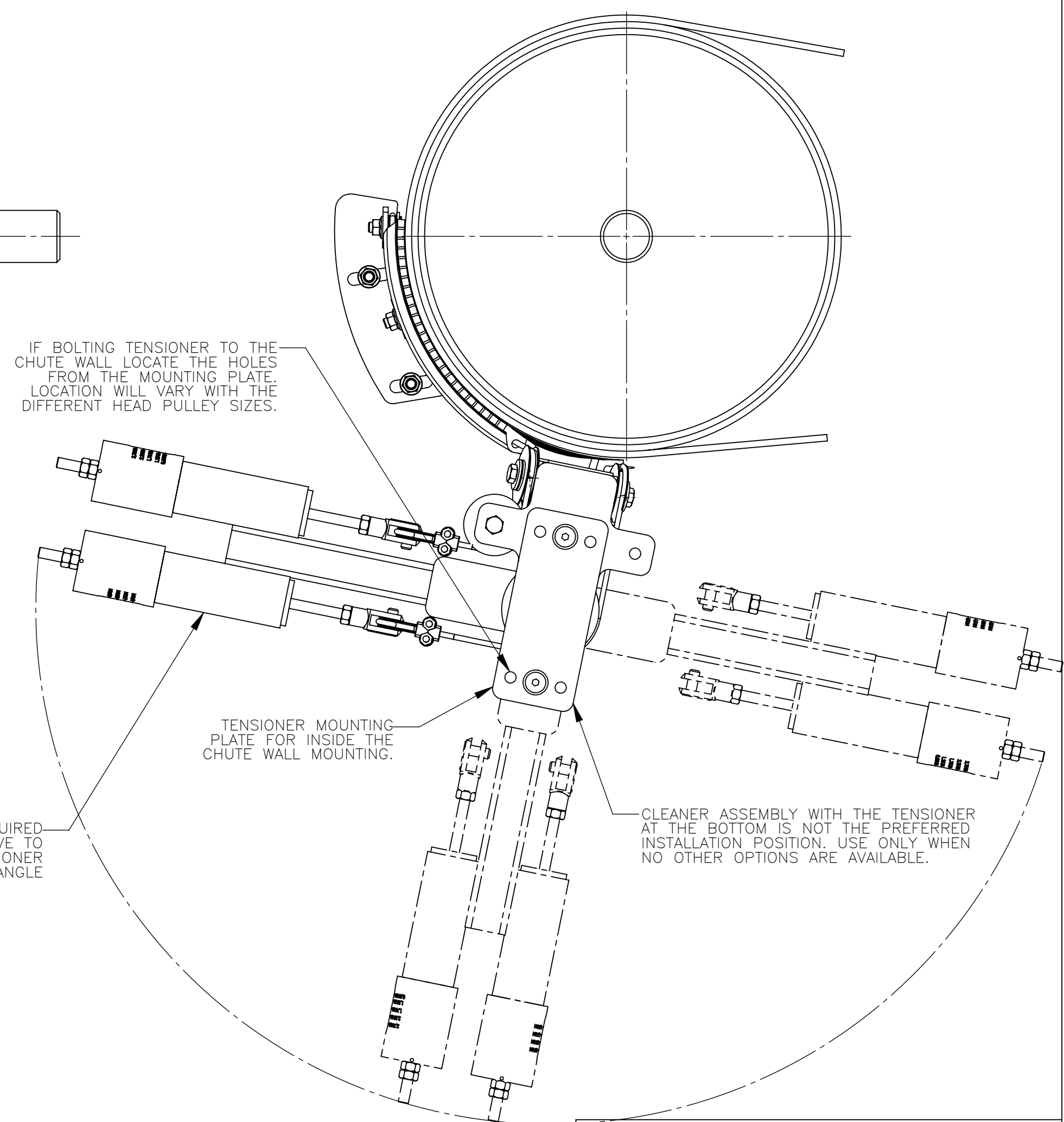
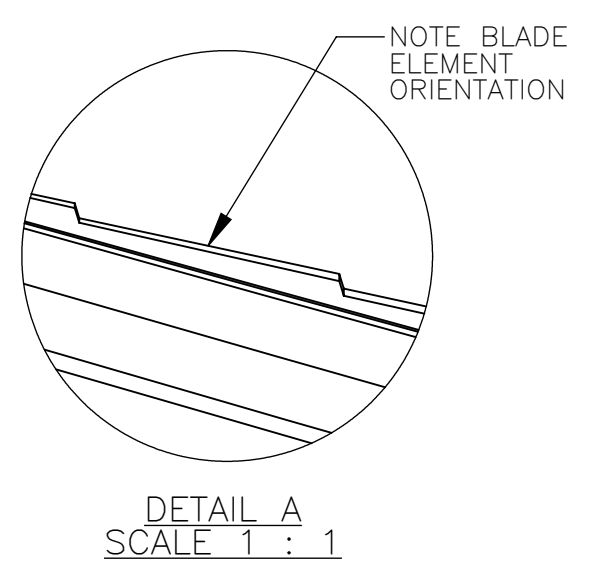
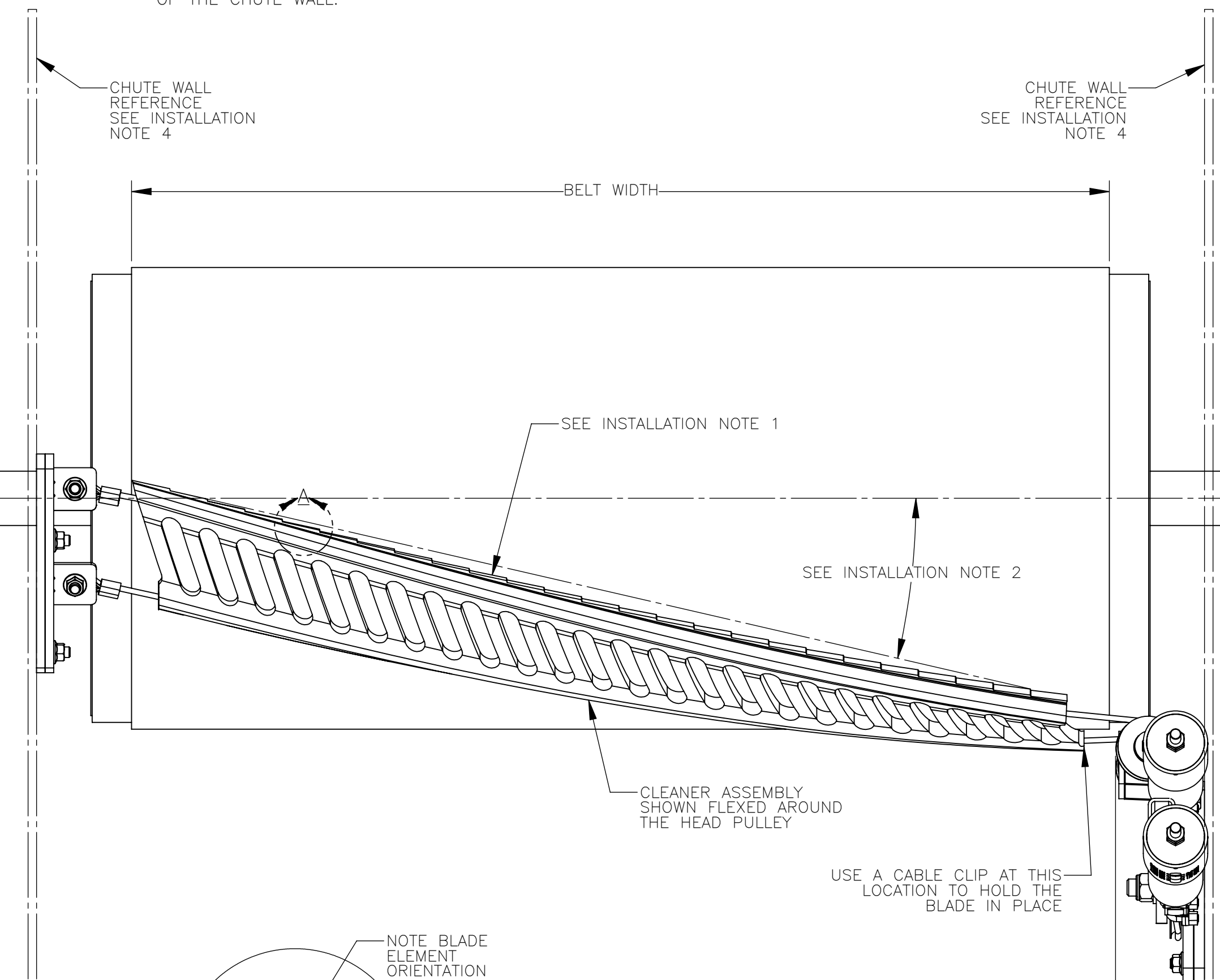
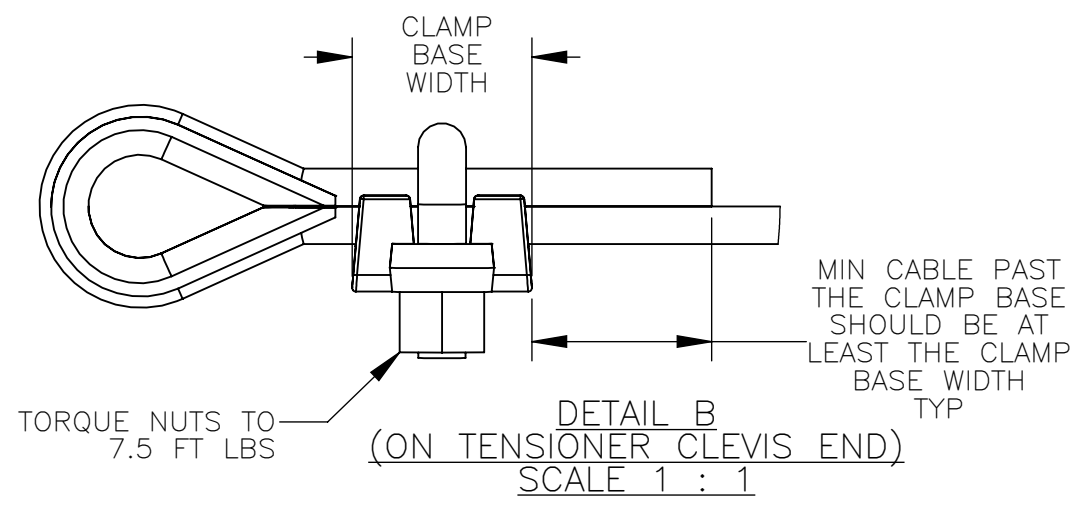
- 1) BLADE CARBIDE SCRAPERS ARE MOLDED INTO THE RUBBER BODY AT AN ANGLE CREATING A SERRATED CLEANING EDGE. CLEANER MUST BE MOUNTED AT AN ANGLE AS SHOWN. CLEANER MUST NOT LIE IN THE MATERIAL PATH.
- 2) THE IDEAL INSTALLATION ANGLE IS BETWEEN 17° AND 19°. ANGLES FROM 10° TO 22° ARE ACCEPTABLE BUT TENSIONER TENSION NEEDS TO BE ADJUSTED AS THE ANGLE CHANGES FROM THE IDEAL ANGLE.
- 3) BELT WIDTH MUST NOT EXCEED A RATIO OF 3:1 TO THE HEAD PULLEY DIAMETER. HEAD PULLEY RANGE IS 305 [12.00] MIN. TO 508 [20.00] MAX.
- 4) CHUTE WALLS MUST BE STRONG ENOUGH TO NOT FLEX WHEN THE CLEANER IS TENSIONED. ADDITIONAL CHUTE WALL STRUCTURE MAY BE REQUIRED TO PREVENT CHUTE WALL FROM FLEXING.
- 5) LOCATE AND INSTALL THE FIXED POINT MOUNT BRACKET ON THE INSIDE OF THE NEAR SIDE CHUTE WALL. MEASURE THE HEAD PULLEY RADIUS PLUS THE LAGGING, BELT THICKNESS, AND ADD THE 9.6 [1.38]. THIS IS THE RADIUS ARC THAT THE FIXED POINT BRACKET WILL BE LOCATED ON. ALSO LOCATE THE FIXED POINT BRACKET UPPER MOUNTING HOLE ON THE HORIZONTAL CENTERLINE. MARK THE HOLE LOCATIONS FROM THE FIXED POINT BRACKET AND DRILL THE MOUNTING HOLES (IF NOT WELDING IN PLACE). BOLT THE FIXED POINT BRACKET TO THE INSIDE OF THE CHUTE WALL.

INSTALLATION NOTES:

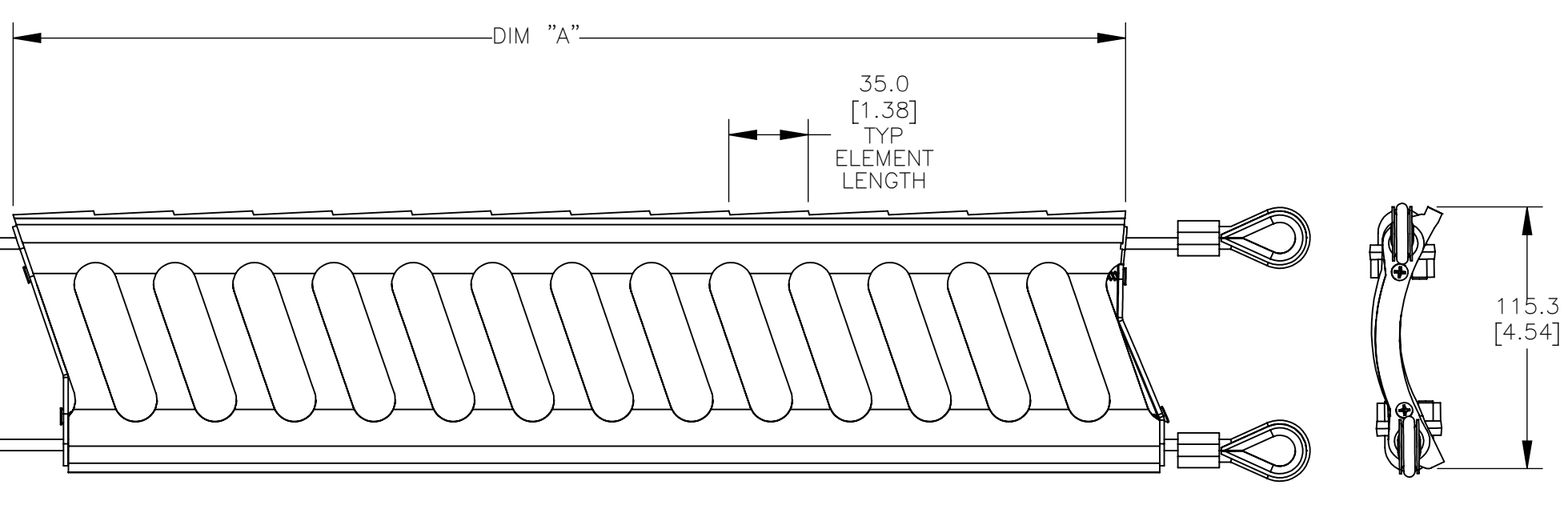
- 6) ON THE OPERATORS SIDE OF THE CHUTE WALL MARK THE LOCATION OF THE TENSIONER MOUNTING PLATE. MEASURE THE HEAD PULLEY RADIUS PLUS THE LAGGING, BELT THICKNESS, AND ADD THE 63.5 [2.50]. THIS IS RADIUS ARC THAT THE TENSIONER MOUNT PLATE CORNERS WILL BE LOCATED ON. MOUNT SO THE TOP PLATE CORNER IS APPROXIMATELY 16 [1.63] OFF THE VERTICAL CENTERLINE. WELD THE TENSIONER MOUNT BRACKET TO THE INSIDE OF THE CHUTE WALL (IF NOT BOLTING IN PLACE). BOLT THE TENSIONER TO THE TENSIONER MOUNT BRACKET. LEAVE THE ADJUSTMENT BOLTS LOOSE AT THIS TIME.
- 7) MEASURE THE APPROXIMATE CABLE LENGTH AND ASSEMBLE THE CABLE THIMBLES AND CLAMPS TO THE TENSIONER END OF THE BLADE ASSEMBLY. INSTALL CLEANER TO THE FIXED POINT BRACKET. LEAVE THE ADJUSTMENT BOLTS LOOSE AT THIS TIME. HOLD THE CLEANER TO THE HEAD PULLEY AND ROUTE THE CABLES THROUGH THE CHUTE WALL AND HOOK ONTO THE TENSIONER. TIGHTEN THE TENSIONER ADJUSTMENT NUTS UNTIL THE CLEANER IS HELD FIRMLY AGAINST THE HEAD PULLEY. ADJUST THE FIXED POINT BRACKET AND TENSIONER BRACKET SO THE OUTER TWO ELEMENTS ON EACH SIDE OF THE CLEANER ARE APPROXIMATELY 3.3 [1.13] AWAY FROM THE BELT. TIGHTEN ALL BOLTS.
- 8) TENSION THE CLEANER PER THE RECOMMENDED TENSION IN THE MANUAL.

NOTES:

- 1) ALL DIMENSIONS ARE GIVEN IN MILLIMETERS [INCHES].
- 2) ALL DIMENSIONS ARE FOR REFERENCE ONLY.
- 3) IN THE "C1C" PART NUMBER:
 - THE FIRST X INDICATES THE ASSEMBLY TYPE:
 - B = BLADE ONLY ASSEMBLY (NO TENSIONER)
 - S = SYSTEM ASSEMBLY WITH TENSIONER
 - THE "S" INDICATES A "SMALL" CLEANSRAPE BLADE/SYSTEM ASSEMBLY
 - THE NEXT XX INDICATES NUMBER OF ELEMENTS IN THE BLADE:
 - 07 = 7 ELEMENTS THRU 40 = 40 ELEMENTS
 - THE NEXT X INDICATES BLADE CARBIDE TYPE:
 - A = A CARBIDE GRADE (MUST USE WITH COPPER SWAGE SLEEVES)
 - B = B CARBIDE GRADE
 - C = C CARBIDE GRADE
 - THE "R" INDICATES RUBBER BLADE BODY MATERIAL
 - THE NEXT X INDICATES THIMBLE AND SWAGE MATERIAL:
 - A = ALUMINUM SWAGE SLEEVES & GALVANIZED THIMBLES
 - C = COPPER SWAGE SLEEVES & STAINLESS STEEL THIMBLES (ALL C1CXSXXARNNXX BLADE ASSEMBLIES ARE ONLY AVAILABLE WITH COPPER SWAGE SLEEVES & STAINLESS STEEL THIMBLES)
 - THE "N" INDICATES THE BLADE USES THE STANDARD 7X19 SS CABLE
 - THE NEXT X INDICATES IF AN INSTALLATION KIT (TENSIONER) IS INCLUDED:
 - BLANK = BLADE ONLY ASSEMBLY (NO TENSIONER)
 - 2 = MULTIFUNCTIONAL SMALL BLADE 2.8KN DUAL COIL SPRING TENSIONER
 - THE LAST X INDICATES THE INSTALLATION KIT (TENSIONER) MATERIAL:
 - BLANK = BLADE ONLY ASSEMBLY (NO TENSIONER)
 - T = STANDARD PAINTED STEEL
 - S = STAINLESS STEEL



TENSIONER CHUTE CUTOUTS AND FIXED POINT BRACKET LOCATION SCALE 1:4



BLADE DETAIL SCALE 3:8

A CHGD THE BLD CARBIDE TYPE FROM 1 & 5 TO A & CARBIDE TO CHART & NOTES, ADDED C		15534	12/10/19	RND
NO.	DESCRIPTION	ECN	DATE	BY
SOLIDWORKS	REVISION			

Copyright 2018 Martin Engineering. All rights reserved. Covered by U.S. and foreign patents pending and issued. ® and TM indicate trademarks of Martin Engineering.

MARTIN ENGINEERING-USA
NEPONSET, IL USA

M

TITLE	CLEANSRAPE SMALL CLEANER ASM WITH INSIDE THE CHUTE WALL MULTIFUNCTIONAL TENS	DRAWN RND	DATE 10/12/18
CHECKED		ENG. 7/27	DATE 10/15/18
APPROVED		DATE 10/15/18	SCALE 1:4

SALES DRAWING PR13395D S50128-SI2LT