

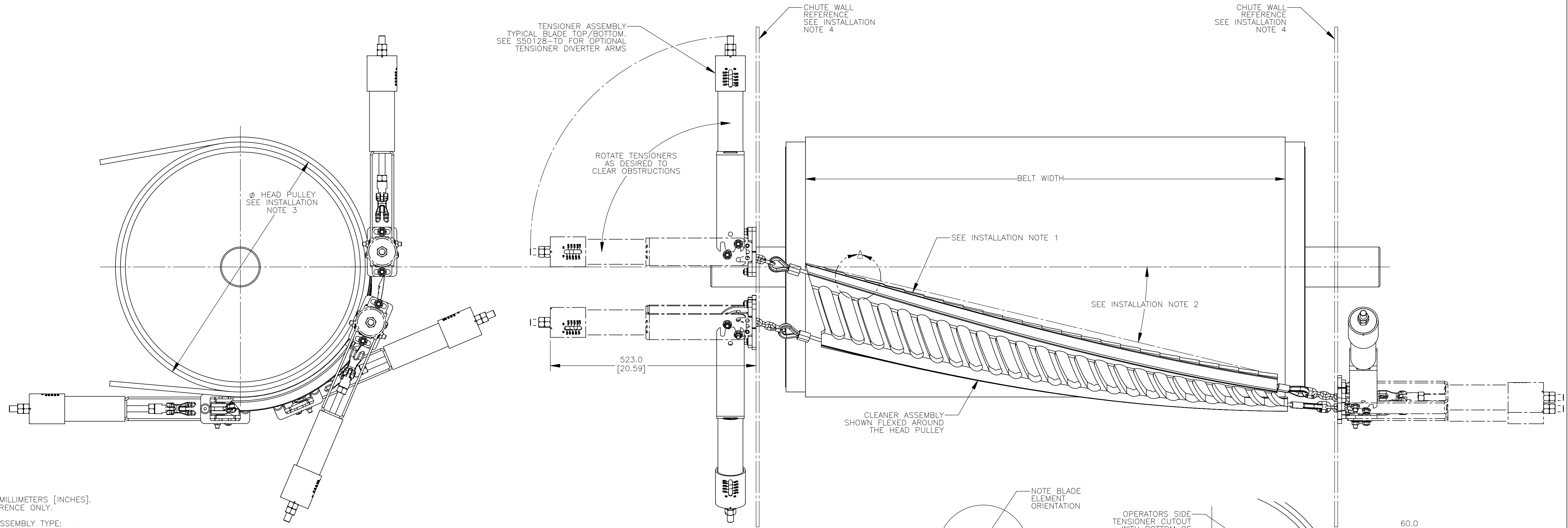
(PART NUMBER 2ND & 3RD XX'S) NUMBER OF ELEMENTS		
PART NUMBER	DIM "A"	NUMBER ELEMENTS
C1CXM31XRSDXX	1550 [61.02]	31
C1CXM32XRSDXX	1600 [62.99]	32
C1CXM33XRSDXX	1650 [64.96]	33
C1CXM34XRSDXX	1700 [66.93]	34
C1CXM35XRSDXX	1750 [68.90]	35
C1CXM36XRSDXX	1800 [70.87]	36

(PART NUMBER 4TH X) BLADE CARBIDE TYPE	
PART NUMBER	APPLICATION
C1CXMXXARSDXX	STANDARD/MODERATE VERSION, SUITABLE FOR ABRASIVE MATERIALS AND LOW/MEDIUM BELT SPEEDS, ALLOWED FOR MECHANICAL SPLICES, HAS CHEMICAL RESISTANCE
C1CXMXXBRSDXX	SEVERE VERSION, SUITABLE FOR HIGHLY ABRASIVE MATERIALS AND HIGH BELT SPEEDS, ALLOWED FOR MECHANICAL SPLICES
C1CXMXXCRSDXX	EXTREME VERSION, SUITABLE FOR EXTREMELY ABRASIVE MATERIALS AND HIGHEST BELT SPEEDS, NOT ALLOWED FOR MECHANICAL SPLICES

(PART NUMBER 5TH X) SWAGE SLEEVES/THIMBLES MATERIAL	
PART NUMBER	SWAGE SLEEVES/THIMBLES MATERIAL
C1CXMXXRASDXX	ALUMINUM SWAGE SLEEVES/GALV THIMBLES
C1CXMXXRSDDXX	COPPER SWAGE SLEEVES/SS THIMBLES

ITEM	QTY.	DESCRIPTION	PART NUMBER
1	1	MARTIN CLEANSRAPE CLEANER ASSEMBLY	SEE CHARTS

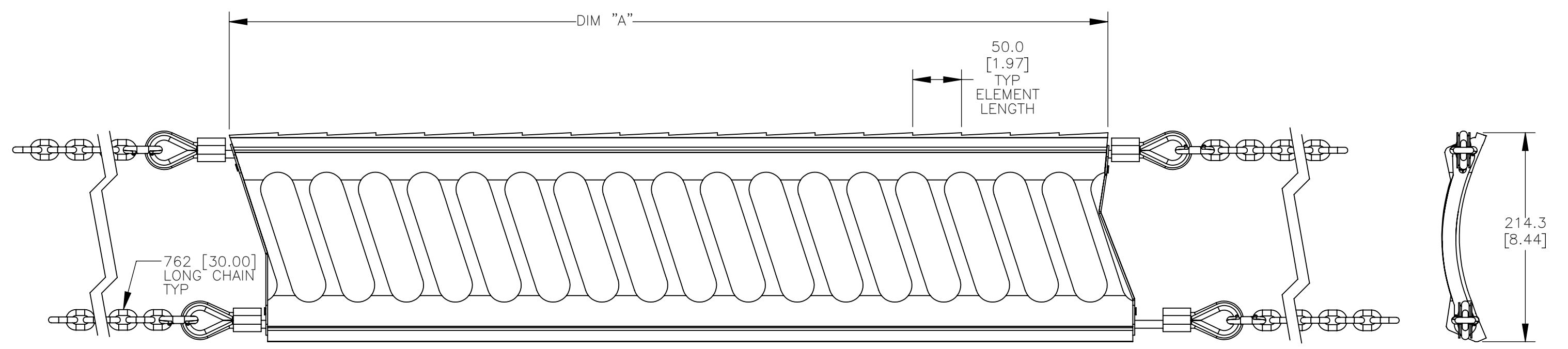
(PART NUMBER LAST TWO XX'S) TENSIONER/INSTALLATION KIT REQUIREMENTS AND MATERIAL		
PART NUMBER	SINGLE/DUAL TENSIONER/TENSIONER SIZE/INSTALLATION KIT MATERIAL	P/N INSTALLATION KIT
C1CSMXXRXSD4T	DUAL 4.2KN TENSIONER FOR 6MM CHAIN NO FIXED POINT MNT BRKT STL	C1CT4DT
C1CSMXXRXSD4S	DUAL 4.2KN TENSIONER FOR 6MM CHAIN NO FIXED POINT MNT BRKT SS	C1CT4DS
C1CBMXXRXSD__	NO TENSIONER/BLADE ONLY FOR DUAL TENSIONER WITH 6MM CHAIN	-----



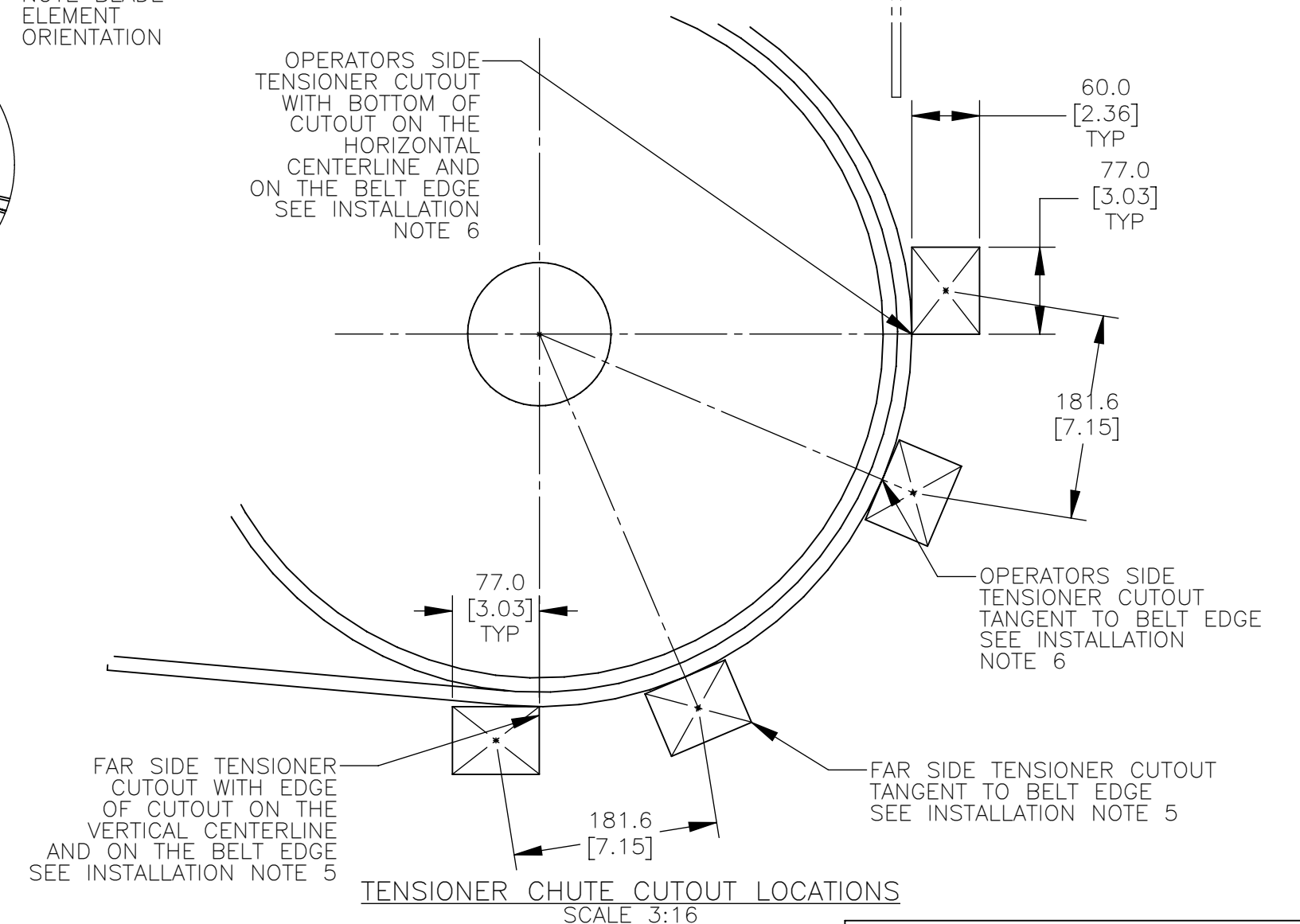
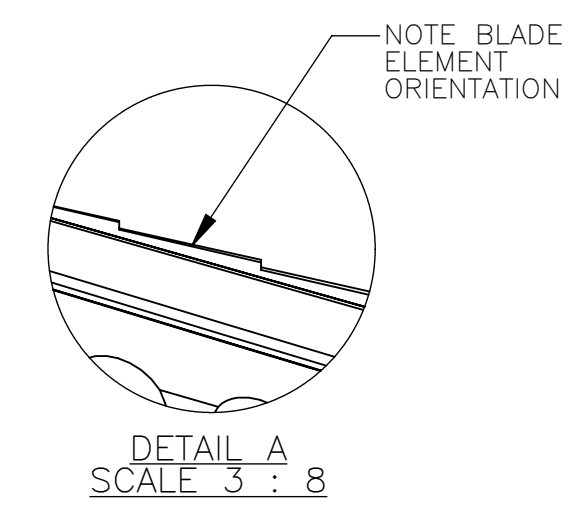
NOTES:
 1) ALL DIMENSIONS ARE GIVEN IN MILLIMETERS [INCHES].
 2) ALL DIMENSIONS ARE FOR REFERENCE ONLY.
 3) IN THE "C1C" PART NUMBER:
 THE FIRST X INDICATES THE ASSEMBLY TYPE:
 B = BLADE ONLY ASSEMBLY (NO TENSIONER)
 S = SYSTEM ASSEMBLY WITH TENSIONER
 THE "M" INDICATES A "MEDIUM" CLEANSRAPE BLADE/SYSTEM ASSEMBLY.
 THE NEXT XX INDICATES NUMBER OF ELEMENTS IN THE BLADE:
 31 = 31 ELEMENTS THRU 36 = 36 ELEMENTS
 THE NEXT X INDICATES BLADE CARBIDE TYPE:
 A = A CARBIDE GRADE (MUST USE WITH COPPER SWAGE SLEEVES)
 B = B CARBIDE GRADE
 C = C CARBIDE GRADE
 THE "R" INDICATES RUBBER BLADE BODY MATERIAL.
 THE NEXT X INDICATES THIMBLE AND SWAGE MATERIAL:
 A = ALUMINUM SWAGE SLEEVES & GALVANIZED THIMBLES
 C = COPPER SWAGE SLEEVES & STAINLESS STEEL THIMBLES (ALL C1CXLXXARCXXXXX BLADE ASSEMBLIES ARE ONLY AVAILABLE WITH COPPER SWAGE SLEEVES AND STAINLESS STEEL THIMBLES)
 THE "S" INDICATES THE STRONGER 7X7 SS CABLE (USE ON ALL ASM'S WITH DUAL TENSIONERS AND BLADES WITH 31 OR MORE ELEMENTS)
 THE "D" INDICATES THE BLADE/CLEANER IS CONFIGURED FOR A DUAL (CHAINS ON BOTH SIDES) TENSIONING
 THE NEXT X INDICATES IF AN INSTALLATION KIT (TENSIONER) IS INCLUDED:
 BLANK = BLADE ONLY ASSEMBLY (NO TENSIONER)
 4 = MEDIUM BLADE 4.2KN COIL SPRING TENSIONER
 THE LAST X INDICATES THE INSTALLATION KIT (TENSIONER) MATERIAL:
 BLANK = BLADE ONLY ASSEMBLY (NO TENSIONER)
 T = STANDARD PAINTED STEEL
 S = STAINLESS STEEL

INSTALLATION NOTES:
 1) BLADE CARBIDE SCRAPERS ARE MOLDED INTO THE RUBBER BODY AT AN ANGLE CREATING A SERRATED CLEANING EDGE. CLEANER MUST BE MOUNTED AT AN ANGLE AS SHOWN. CLEANER MUST NOT LIE IN THE MATERIAL PATH.
 2) THE IDEAL INSTALLATION ANGLE IS BETWEEN 17' AND 19'. ANGLES FROM 10' TO 22' ARE ACCEPTABLE BUT TENSIONER TENSION NEEDS TO BE ADJUSTED AS THE ANGLE CHANGES FROM THE IDEAL ANGLE.
 3) BELT WIDTH MUST NOT EXCEED A RATIO OF 3:1 TO THE HEAD PULLEY DIAMETER. HEAD PULLEY RANGE IS 559 [22.00] MIN. TO 864 [34.00] MAX.
 4) CHUTE WALLS MUST BE STRONG ENOUGH TO NOT FLEX WHEN THE CLEANER IS TENSIONED. ADDITIONAL CHUTE WALL STRUCTURE MAY BE REQUIRED TO PREVENT CHUTE WALL FROM FLEXING.
 5) ON THE FAR SIDE OF THE CHUTE WALL MARK THE LOCATION OF THE TENSIONER CUTOUTS. SEE THE CUTOUT DETAIL. WELD THE TENSIONER MOUNT BRACKETS TO THE CHUTE WALL POSITIONED OVER THE CUTOUTS. BOLT THE TENSIONERS TO THE TENSIONER MOUNT BRACKETS. LEAVE THE ADJUSTMENT BOLTS LOOSE AT THIS TIME.

INSTALLATION NOTES:
 6) ON THE OPERATORS SIDE OF THE CHUTE WALL MARK THE LOCATION OF THE TENSIONER CUTOUTS. SEE THE CUTOUT DETAIL. WELD THE TENSIONER MOUNT BRACKETS TO THE CHUTE WALL, POSITIONED OVER THE CUTOUTS. BOLT THE TENSIONERS TO THE TENSIONER MOUNT BRACKETS. LEAVE THE ADJUSTMENT BOLTS LOOSE AT THIS TIME.
 7) ASSEMBLE THE CHAINS ON THE BLADE TO THE TENSIONERS BY HOLDING THE CLEANER TO THE HEAD PULLEY AND ROUTING THE CHAINS THROUGH THE CHUTE WALL. MAKE SURE THE TENSIONER ADJUSTMENT NUTS ARE AT THE END OF THE TENSIONER THREADED ROD. TIGHTEN THE TENSIONER ADJUSTMENT NUTS UNTIL THE CLEANER IS HELD FIRMLY AGAINST THE HEAD PULLEY. ADJUST THE TENSIONER BRACKETS SO THE OUTER TWO ELEMENTS ON EACH SIDE OF THE CLEANER ARE APPROXIMATELY 3.3 [1.13] AWAY FROM THE BELT. TIGHTEN ALL BOLTS.
 8) TENSION THE CLEANER PER THE RECOMMENDED TENSION IN THE MANUAL.



BLADE DETAIL
SCALE 1:4



TENSIONER CHUTE CUTOUT LOCATIONS
SCALE 3:16

Copyright 2018 Martin Engineering. All rights reserved. Covered by U.S. and foreign patents pending and issued. ® and TM indicate trademarks of Martin Engineering.

MARTIN ENGINEERING-USA
NEPONSET, IL USA

MARTIN ENGINEERING

TITLE: CLEANSRAPE MEDIUM CLEANER ASM'S WITH 4.2KN TENSIONERS

DRAWN RND DATE 10/09/18
CHECKED
ENG. DATE 10/15/18
APPROVED DATE 10/15/18
SCALE 3:16

NO.	DESCRIPTION	ECN	DATE	BY
A	CHGD THE BLD CARBIDE TYPE FROM 1 & 5 TO A, FROM 2 & 3 TO B, & FROM 4 TO C IN THE CHART & NOTES	15534	12/10/19	RND

SALES DRAWING PR13395D S50128-MD