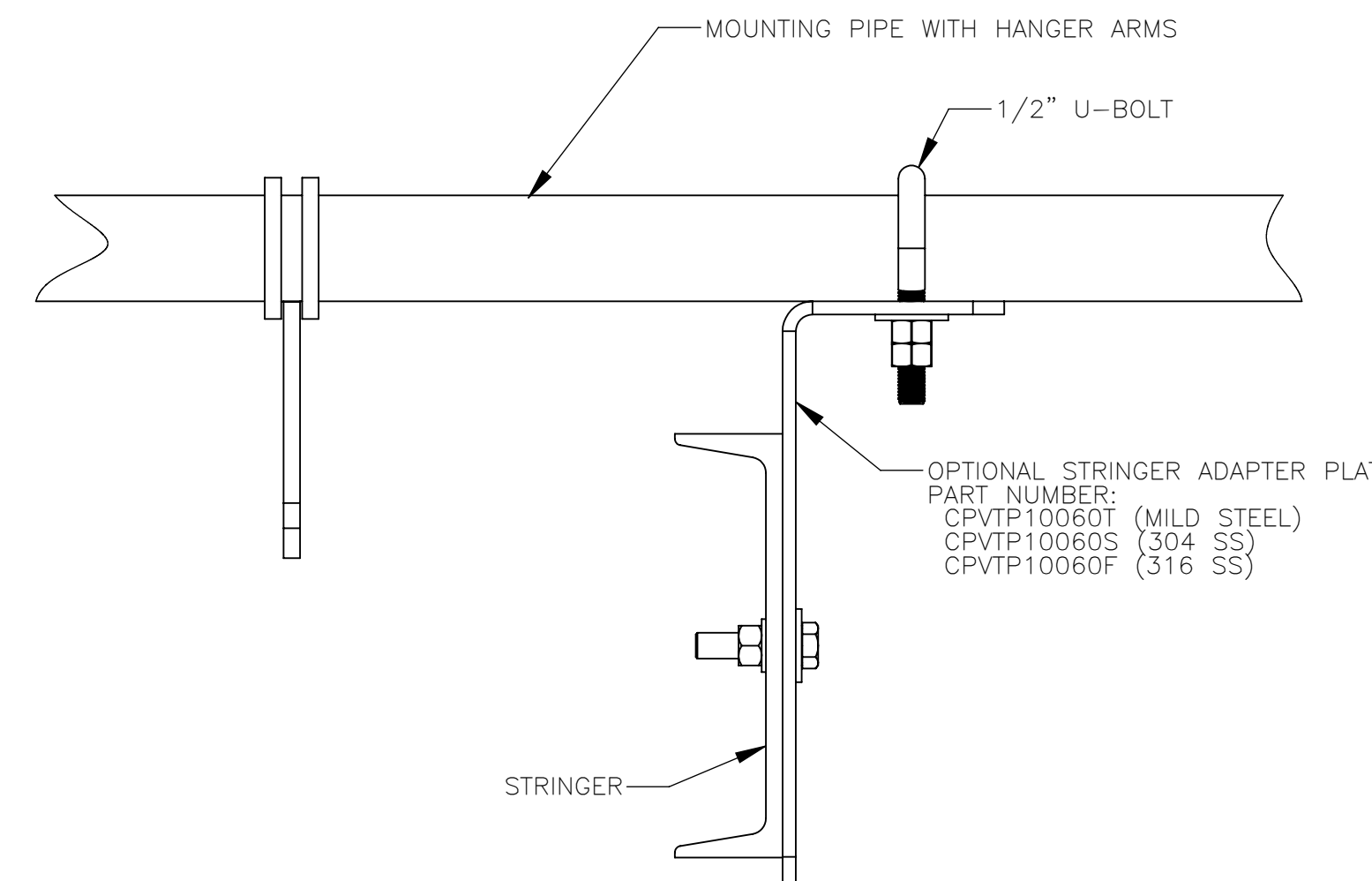
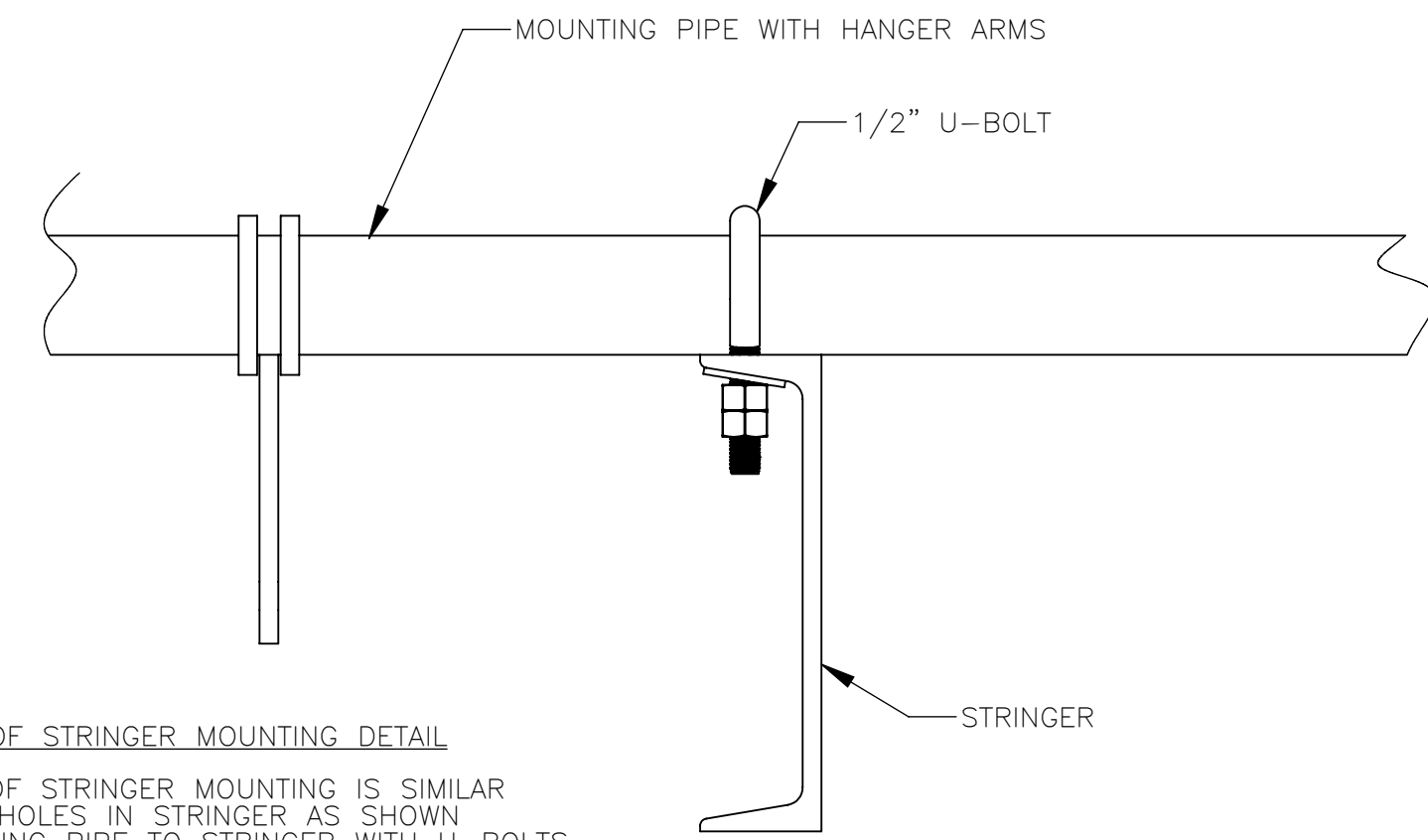
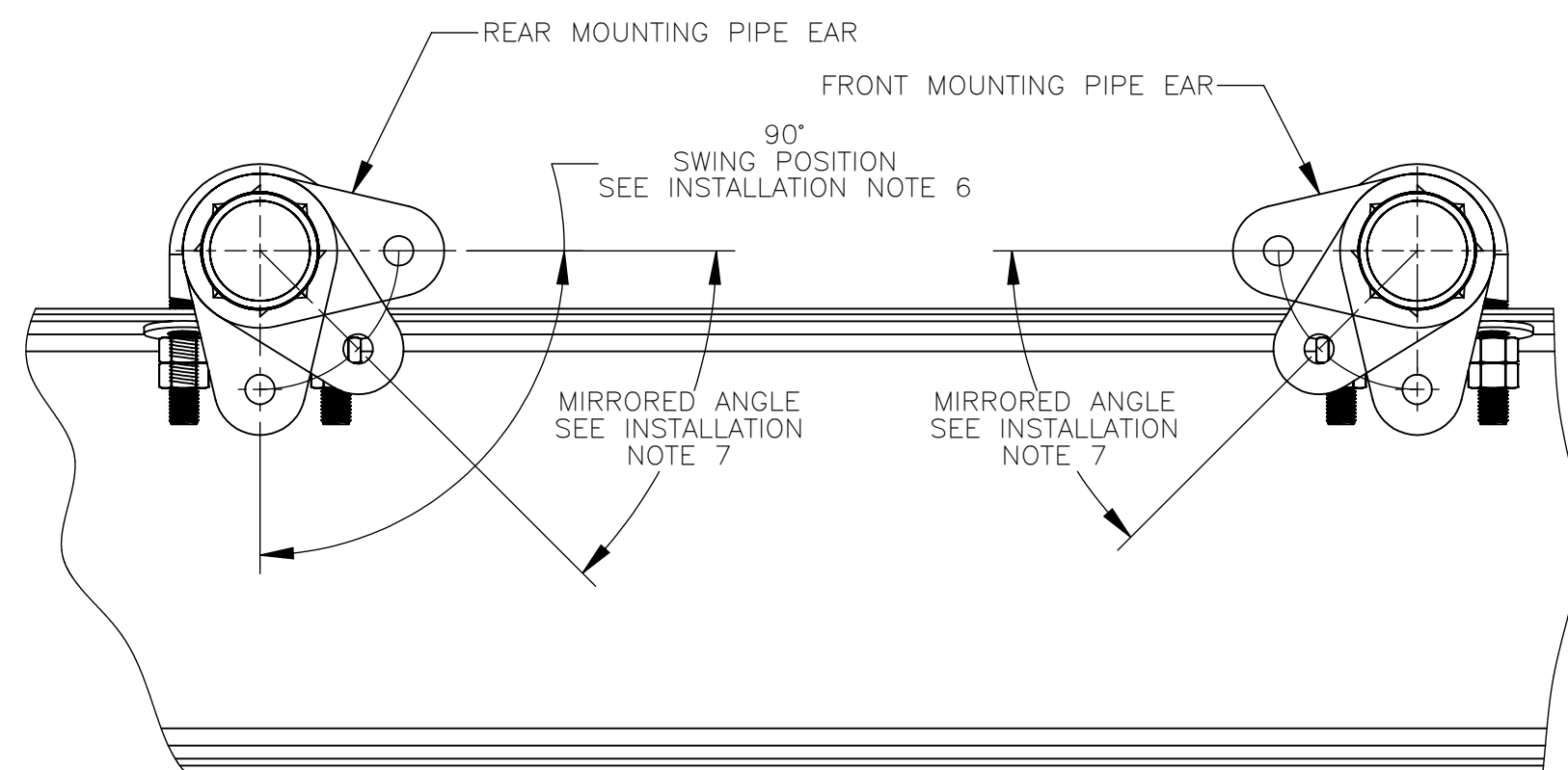
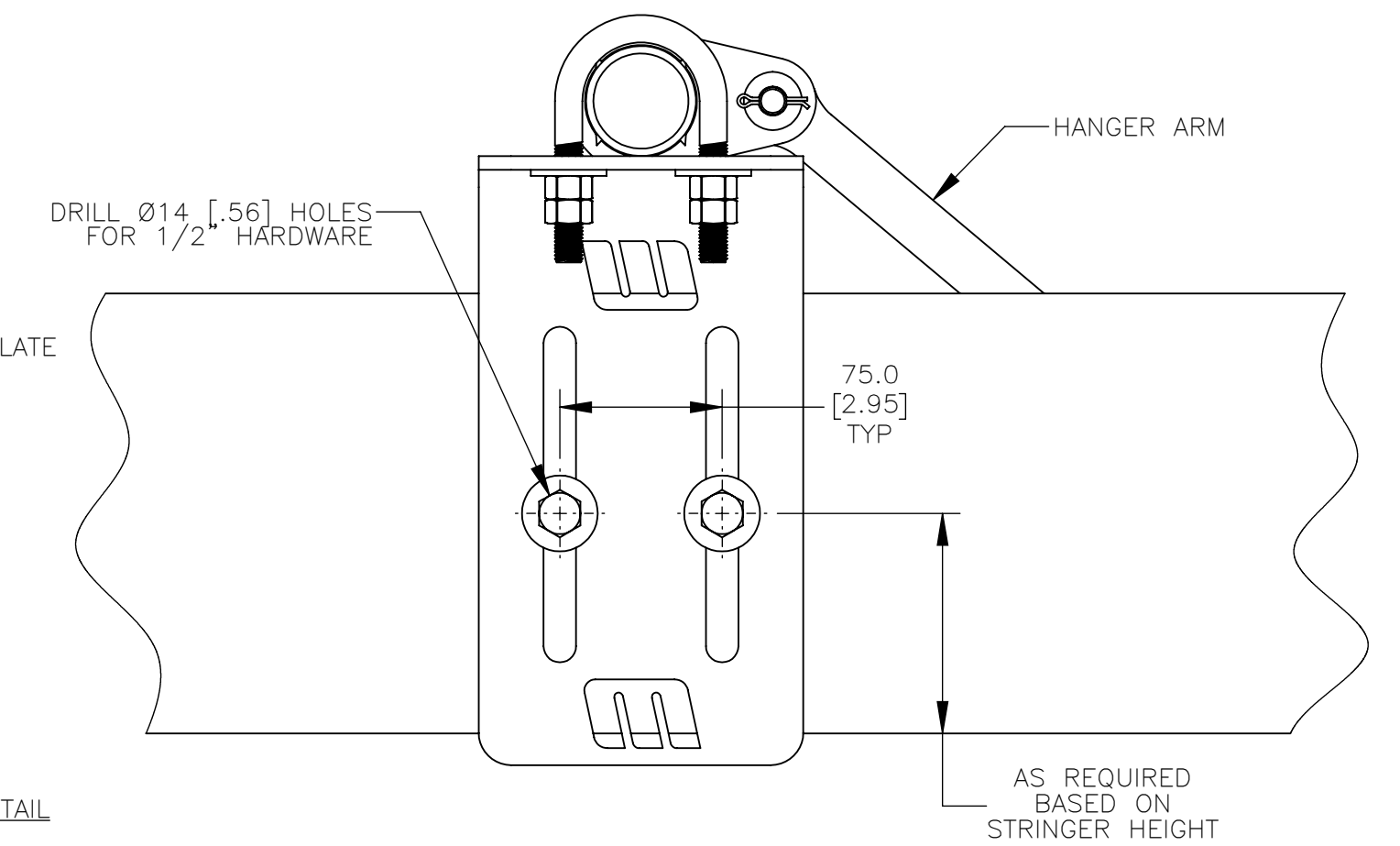


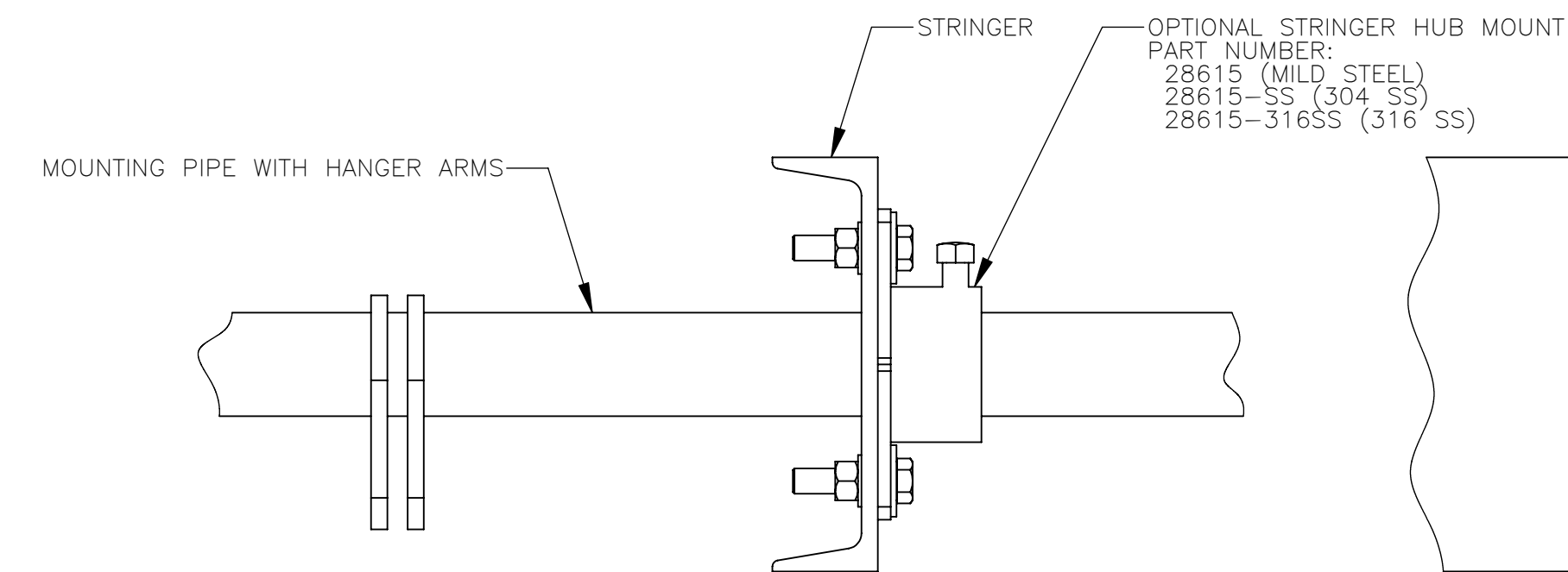
TOP OF STRINGER MOUNTING DETAIL
BOTTOM OF STRINGER MOUNTING IS SIMILAR
DRILL HOLES IN STRINGER AS SHOWN
CLAMP MOUNTING PIPE TO STRINGER WITH U-BOLTS
SCALE 5:16



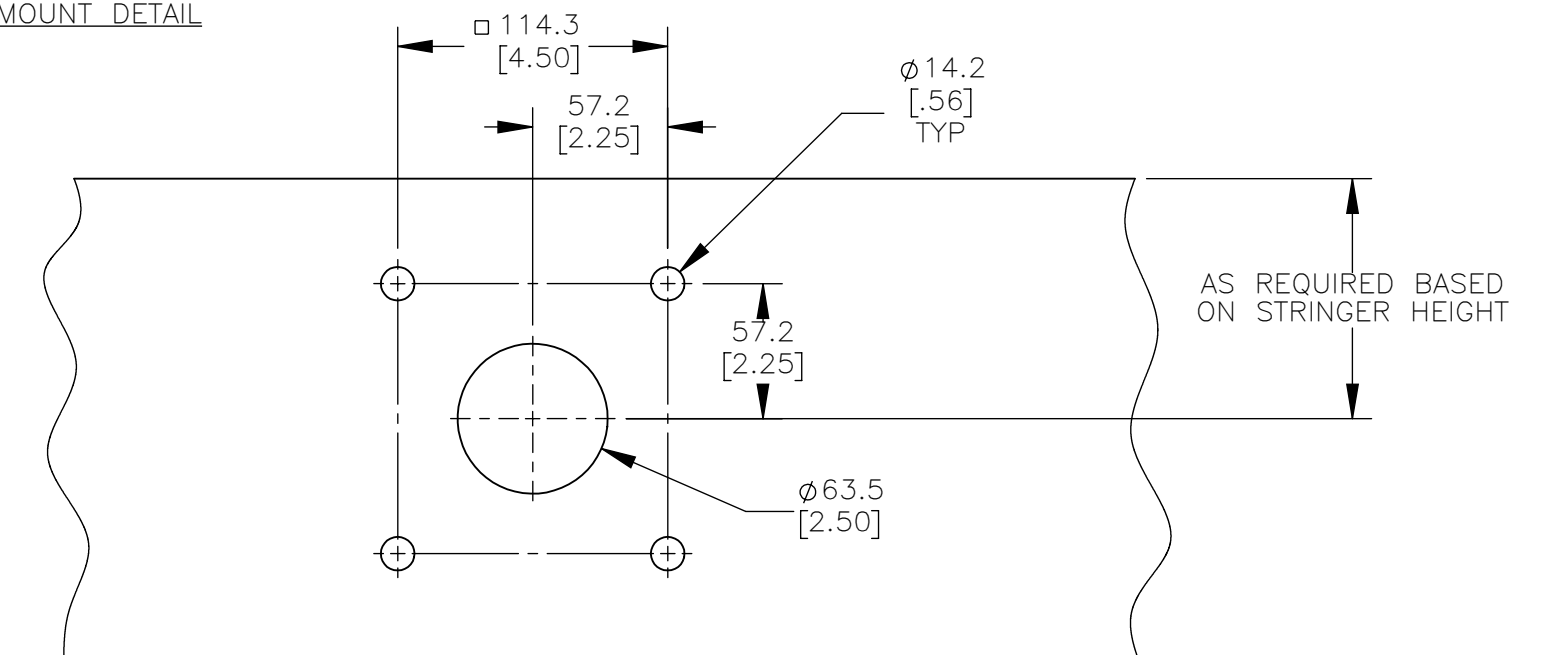
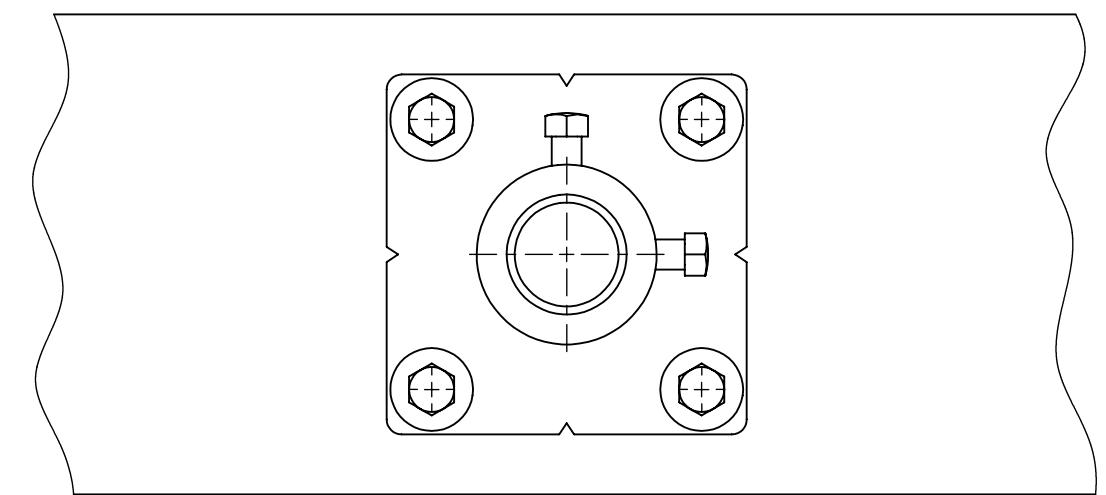
TOP OF STRINGER MOUNTING WITH OPTIONAL ADAPTER PLATE DETAIL
BOTTOM OF STRINGER MOUNTING IS SIMILAR
DRILL HOLES IN STRINGER AS SHOWN
(OPTIONAL ADAPTER PLATE MAY BE WELDED TO STRINGER)
CLAMP MOUNTING PIPE TO STRINGER ADAPTER PLATE WITH U-BOLTS
SCALE 5:16



TOP OF STRINGER MOUNTING HANGER PIPE ARM POSITION DETAIL
BOTTOM OF STRINGER MOUNTING IS SIMILAR
CLAMP MOUNTING PIPE TO STRINGER WITH U-BOLTS
MIRROR MOUNTING ANGLE WITHIN THE 90° ALLOWABLE POSITION
SCALE 5:16



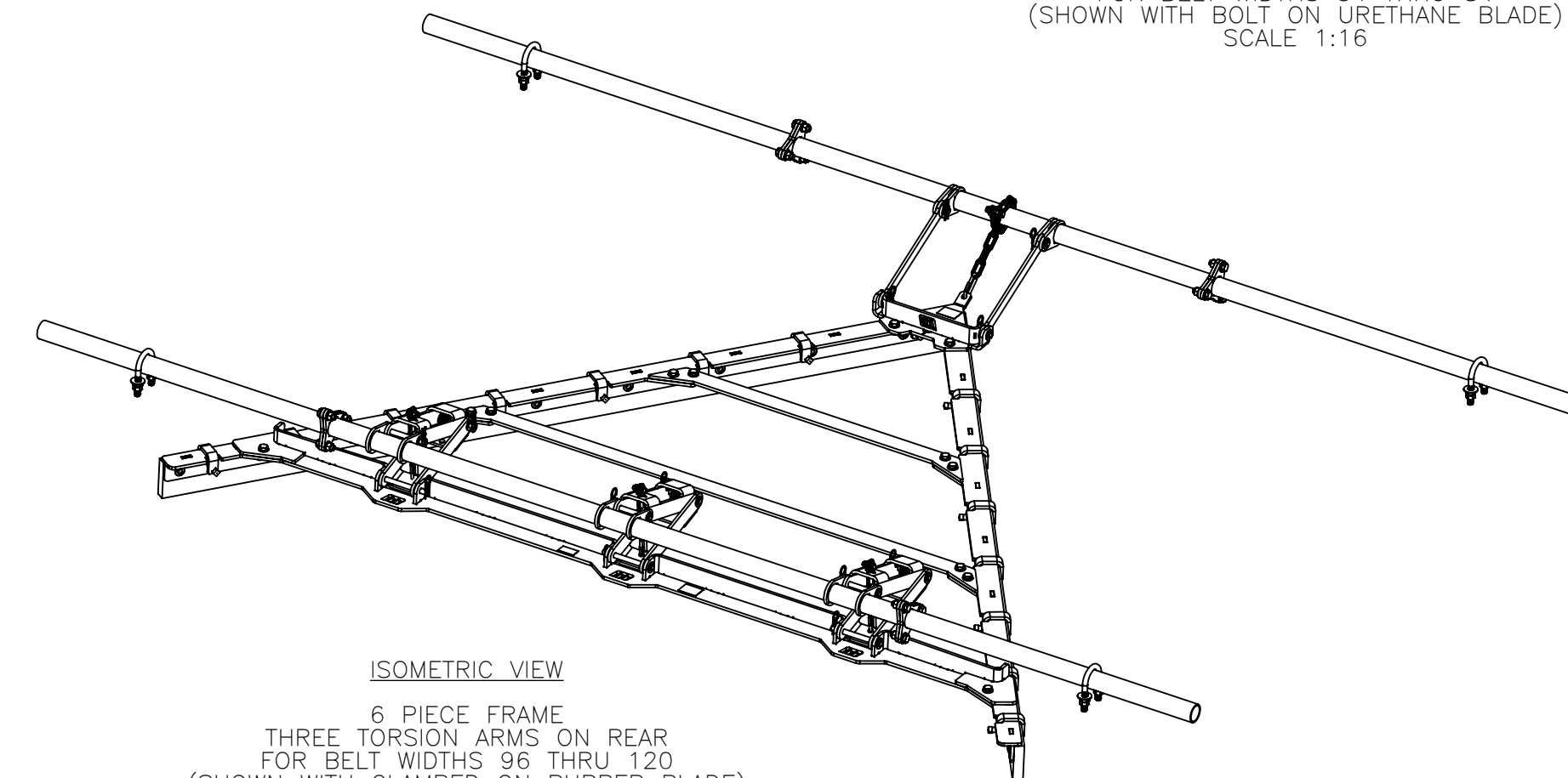
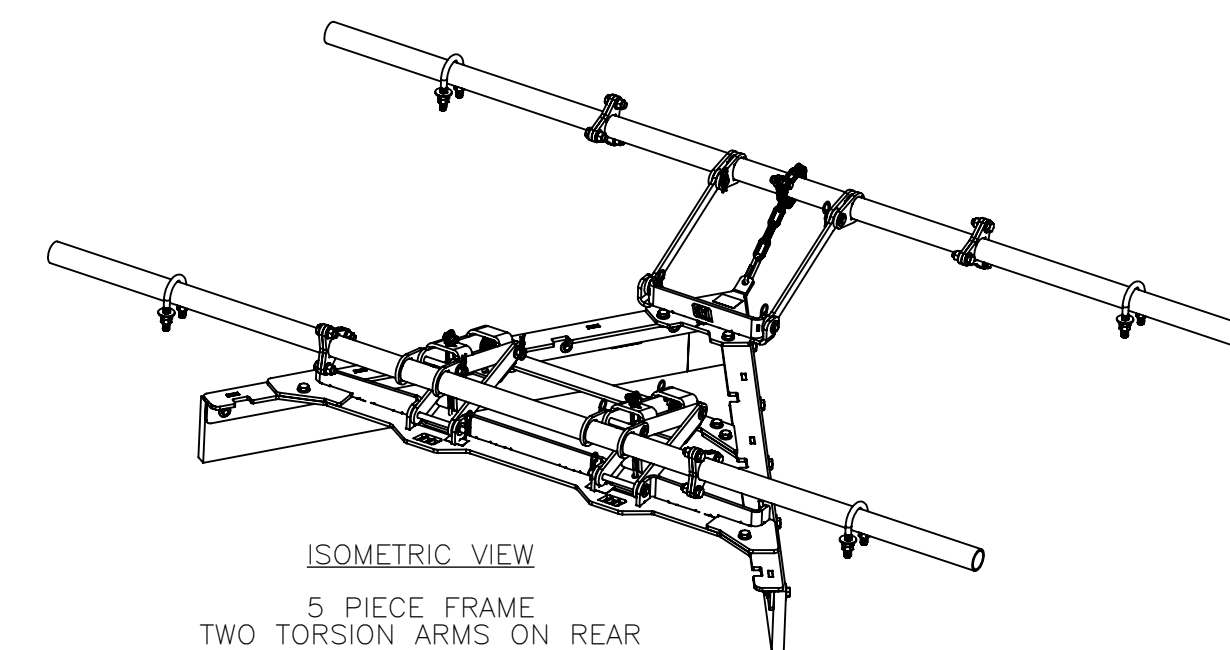
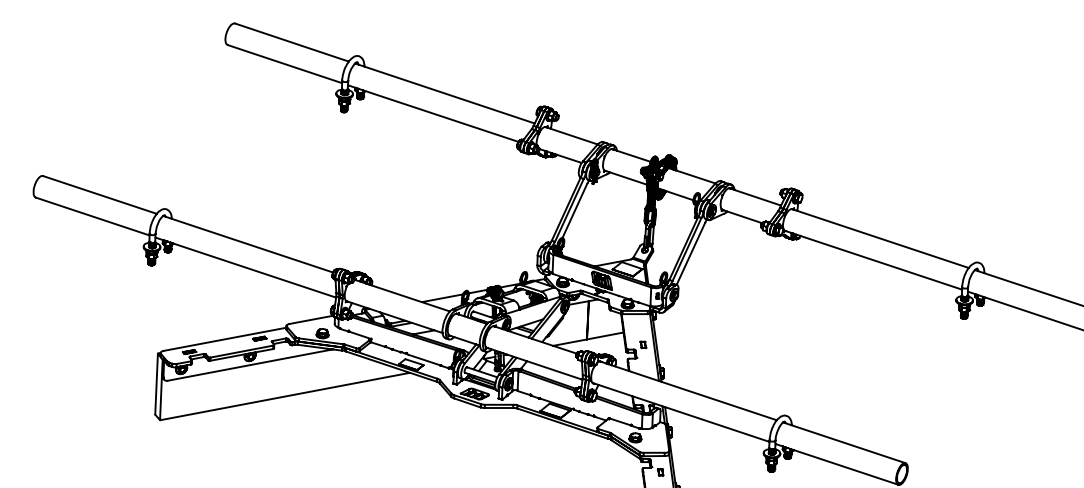
STRINGER MOUNTING WITH OPTIONAL HUB MOUNT DETAIL
SCALE 5:16



OPTIONAL HUB MOUNT STRINGER MOUNTING CUTOUT DETAIL
DRILL HOLES IN STRINGER AS SHOWN
(OPTIONAL HUB MOUNT MAY BE WELDED TO STRINGER)
SCALE 5:16

INSTALLATION NOTES:

- REFER TO OPERATORS MANUAL FOR PROPER INSTALLATION AND MAINTENANCE INSTRUCTIONS. ALSO REFER TO THE MANUAL FOR REPLACEMENT PARTS.
- V-PLOW IS DESIGNED FOR TAIL PULLEY PROTECTION ONLY, NOT FOR REMOVING MATERIAL CARRYBACK.
- LOCATE A SUITABLE POSITION FOR THE V-PLOW AT THE TAIL END OF THE CONVEYOR. THE DISCHARGE END OF THE V-PLOW MUST BE CLEAR OF THE STRUCTURE TO ALLOW MATERIAL TO EXIT OFF THE BLADE.
- THE BELT MUST BE FLAT IN THE AREA WHERE THE V-PLOW IS TO BE INSTALLED TO ENSURE THE WEAR RATE OF THE BLADE IS EVEN. INSTALL RETURN IDLES AS REQUIRED TO ENSURE THE BELT IS FLAT IN THE V-PLOW LOCATION.
- THE V-PLOW SHOULD NOT BE PLACED ON TOP OF RETURN ROLLERS. ALLOW A MINIMUM OF 11.81 [300] FROM THE CENTER OF THE RETURN ROLLERS TO THE FRONT OF THE V-PLOW BLADE. ALSO ALLOW A MINIMUM OF 12.00 [305] FROM THE FACE OF THE TAIL PULLEY TO THE BACK EDGE OF THE V-PLOW BLADE.
- PLACE THE V-PLOW FRAME (LESS THE BLADE AND HANGER PIPES) ONTO THE BELT IN THE PROPOSED LOCATION. ADJUST THE POSITION AS NEEDED TO ALLOW FOR THE BEST MOUNTING LOCATION FOR THE HANGER PIPES. HANGER PIPES MAY BE BOLTED ON TOP, BELOW, OR THRU THE STRINGER CHANNELS. MARK THE PROPOSED LOCATION OF THE REAR HANGER PIPE. INSTALL THE REAR HANGER PIPE IN THE MARKED LOCATION. CONNECT THE TORSION LINK ARM TO THE V-PLOW FRAME AND THE REAR HANGER PIPE. THE EARS ON THE REAR HANGER PIPE MAY BE ORIENTATED IN ANY POSITION WITHIN THE 90° SWING FROM VERTICALLY DOWN TO HORIZONTAL TO THE FRONT OF THE V-PLOW FRAME.
- RAISE THE FRONT HANGER ARMS AND MARK THE LOCATION OF THE FRONT HANGER PIPE. THE CENTER OF THE FRONT HANGER PIPE MUST BE PARALLEL TO THE CENTER OF THE REAR HANGER PIPE AND BOTH PIPE CENTERS ARE TO BE PARALLEL TO THE BELT. THE FRONT HANGER ARMS SHOULD NOT BE LESS THAN 20° OFF VERTICAL WITH THE V-PLOW FRAME. ALSO THE FRONT HANGER PIPE ARMS SHOULD BE AT AN ANGLE THAT MIRRORS THE REAR HANGER PIPE ARMS ANGLE. INSTALL THE FRONT HANGER PIPE AND CONNECT THE HANGER ARMS.
- THE 12 LINK CHAIN IS USED TO LOCK THE REAR TORSION ARMS TOGETHER AND TO SET THE DROP HEIGHT. CONNECT THE QUICK LINK TO THE BOTTOM TORSION ARM AND SECURE THE TOP TORSION ARM WITH THE SUPPLIED HARDWARE. SECURE THE CHAIN SO THAT WHEN THE V-PLOW BLADE IS WORN THE V-PLOW FRAME DOES NOT MAKE CONTACT WITH THE BELT.
- THE 21 LINK LANYARD CHAIN IS TO BE MOUNTED TO THE FRONT HANGER PIPE. CONNECT TO THE FRONT OF THE V-PLOW WITH THE QUICK LINK AND SECURE THE OTHER END TO THE FRONT HANGER PIPE WITH THE SUPPLIED HARDWARE. MEASURE AND SECURE THE CHAIN SO THAT WHEN THE V-PLOW BLADE IS WORN THE V-PLOW FRAME DOES NOT MAKE CONTACT WITH THE BELT. SET THE PLOW UP SO THE NOSE IS SLIGHTLY ELEVATED SO THAT THE V-PLOW DOES NOT DIG INTO THE BELT.
- WITH THE HANGER PIPES IN POSITION TIGHTEN THE U-BOLTS FOR THE HANGER PIPES. USE SPACERS/SHIMS TO RAISE THE V-PLOW FRAME .25 [6] OFF THE BELT. ADJUST THE SAFETY CHAINS TO PREVENT THE FRAME FROM REACHING THE BELT. REMOVE THE FRAME TO BELT .25 [6] SPACERS/SHIMS. MAKE SURE THE V-PLOW FRAME DOES NOT TOUCH THE BELT. ADJUST THE SAFETY CHAINS AS NEEDED TO ENSURE THE FRAME DOES NOT TOUCH THE BELT. INSTALL THE V-PLOW BLADE ONTO THE FRAME AFTER THE SAFETY CHAINS HAVE BEEN SET.
- HANGER PIPES ARE LONGER THAN REQUIRED, FIELD MODIFY THE LENGTH AS NEEDED FOR PROPER MOUNTING. IF MOUNTED THRU THE STRINGER DRILL OR CUT 2-1/2" DIAMETER HOLES FOR MOUNTING THE HANGER PIPES AND USE THE OPTIONAL MOUNTING PLATES.
- ONCE THE V-PLOW HAS BEEN ATTACHED TO THE STRUCTURE ENSURE THAT IT IS ABLE TO MOVE FREELY. RUN THE BELT AND TEST THE EFFECTIVENESS OF THE V-PLOW AND MAKE ANY ADJUSTMENTS IF NEEDED.



- NOTES:
1) ALL DIMENSIONS ARE GIVEN IN MILLIMETERS [INCHES].
2) ALL DIMENSIONS ARE FOR REFERENCE ONLY.

Copyright 2018 Martin Engineering. All rights reserved. Covered by U.S. and foreign patents pending and issued. ® and TM indicate trademarks of Martin Engineering.

MARTIN ENGINEERING-USA
NEPONSET, IL USA

TITLE: TORSION DUTY V-PLOW ASSEMBLY
DRAWN: JAH
RND: DATE: 09/24/18
CHECKED: JAH
ENG: DATE: 02/06/19
APPROVED: JAH
DATE: 02/05/19

NO.	DESCRIPTION	ECN	DATE	BY
A	(SHT 1) ADDED HUB MOUNT KIT OPTIONS TO NOTE / (SHT 2) ADDED OPTIONAL HUB MOUNT DETAILS (PR13887)	----	11/06/19	JAH
SALES DRAWING				
PR13634			S50127	