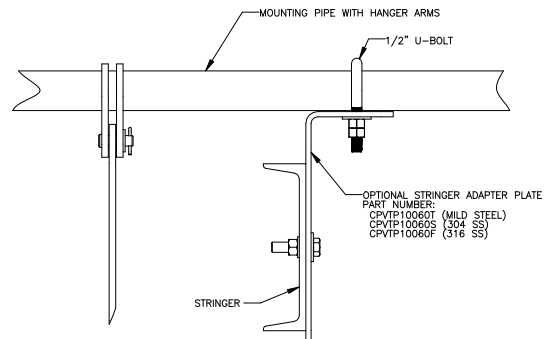
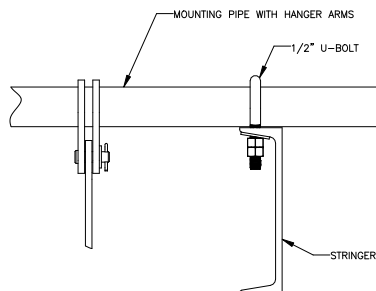
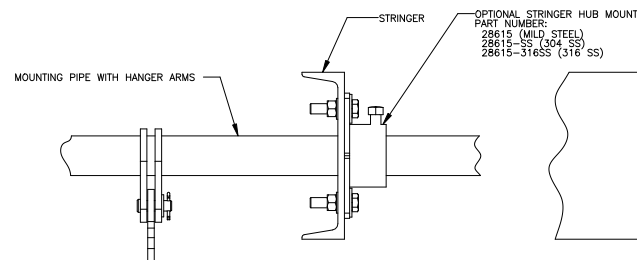
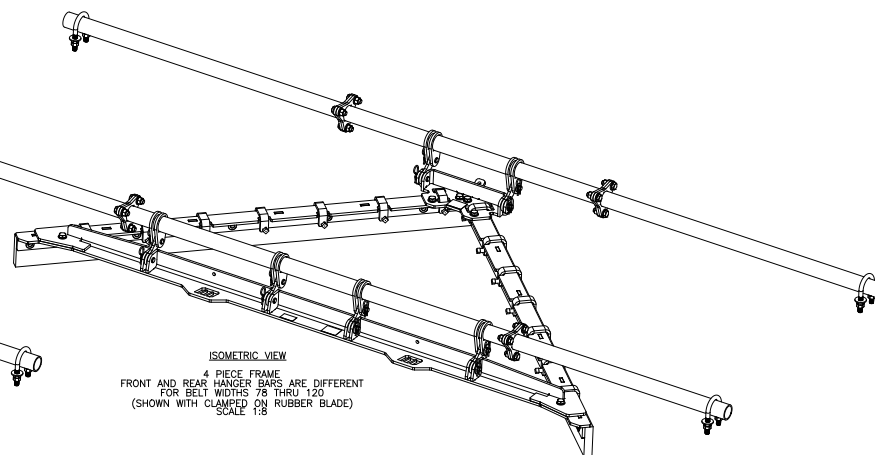
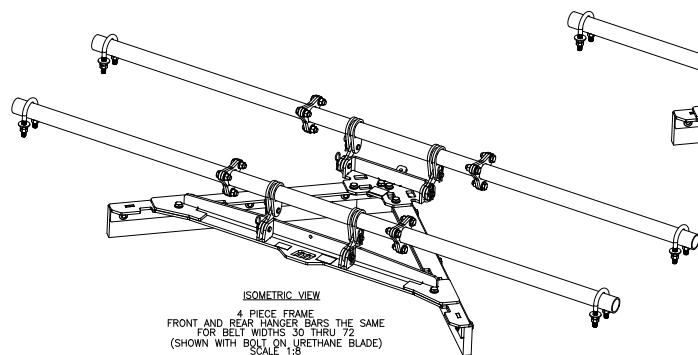
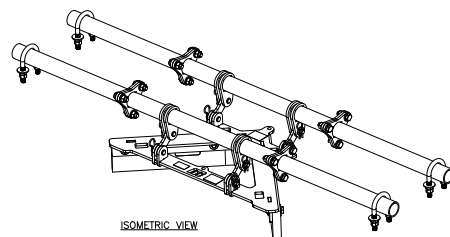
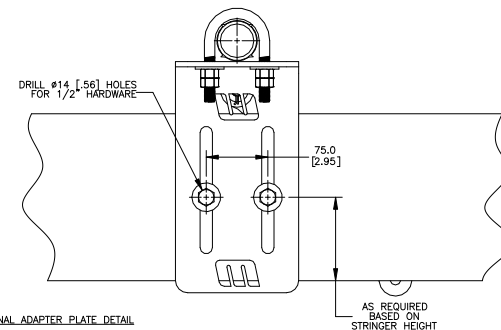


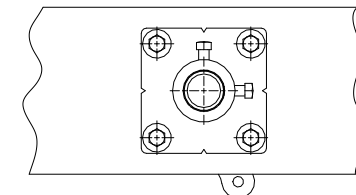
TOP OF STRINGER MOUNTING DETAIL  
BOTTOM OF STRINGER MOUNTING IS SIMILAR  
DRILL HOLES IN STRINGER AS SHOWN  
CLAMP MOUNTING PIPE TO STRINGER WITH U-BOLTS  
SCALE 5:16



TOP OF STRINGER MOUNTING WITH OPTIONAL ADAPTER PLATE DETAIL  
BOTTOM OF STRINGER MOUNTING IS SIMILAR  
DRILL HOLES IN STRINGER AS SHOWN  
(OPTIONAL ADAPTER PLATE MAY BE WELDED TO STRINGER)  
CLAMP MOUNTING PIPE TO STRINGER ADAPTER PLATE WITH U-BOLTS  
SCALE 5:16



STRINGER MOUNTING WITH OPTIONAL HUB MOUNT DETAIL  
SCALE 5:16



OPTIONAL HUB MOUNT STRINGER MOUNTING CUTOUT DETAIL  
DRILL HOLES IN STRINGER AS SHOWN  
(OPTIONAL HUB MOUNT MAY BE WELDED TO STRINGER)  
SCALE 5:16

NOTES:  
1) ALL DIMENSIONS ARE GIVEN IN MILLIMETERS [INCHES].  
2) ALL DIMENSIONS ARE FOR REFERENCE ONLY.

SHEET 3 OF 4

© Copyright 2018 Martin Engineering. All rights reserved. Covered by U.S. and foreign patents pending and issued. ® and TM indicate trademarks of Martin Engineering.



MARTIN ENGINEERING-USA  
NEPONSET, IL USA

C	ADDED SHEET 4	15716	06/27/20	MH	TITLE	DRAWN RND
B	(SHT 1 & 2) ADDED HUB MOUNT KIT OPTIONS TO NOTE (SHT 3) ADDED OPTIONAL HUB MOUNT DETAILS (P211002)	-----	11/06/19	JAH	DATE 09/13/18	CHECKED
A	(SHT 1 & 2) UPDATED DIM "T" & DIM "O" IN CHART / (SHT 3) ADDED PIPE DIA. LEADER NOTE	15317	02/25/19	RND	DATE 9/20/2018	ENG. JAP
NO.	DESCRIPTION	EON	DATE	BY	APPROVED JES	DATE 9/27/2018
SOLIDWORKS	REVISION				SALES DRAWING	SCALE 5:32
					PR13654	S50126

V-PLOW MODULAR  
ASSEMBLY

DRAWN RND  
DATE 09/13/18  
CHECKED  
ENG. JAP  
DATE 9/20/2018  
APPROVED JES  
DATE 9/27/2018  
SCALE 5:32