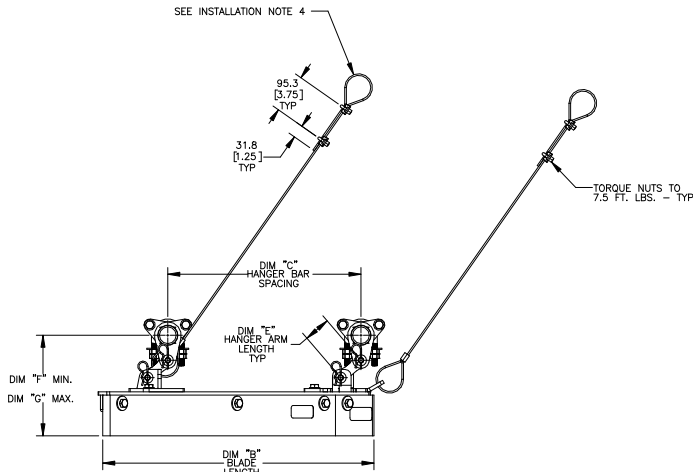
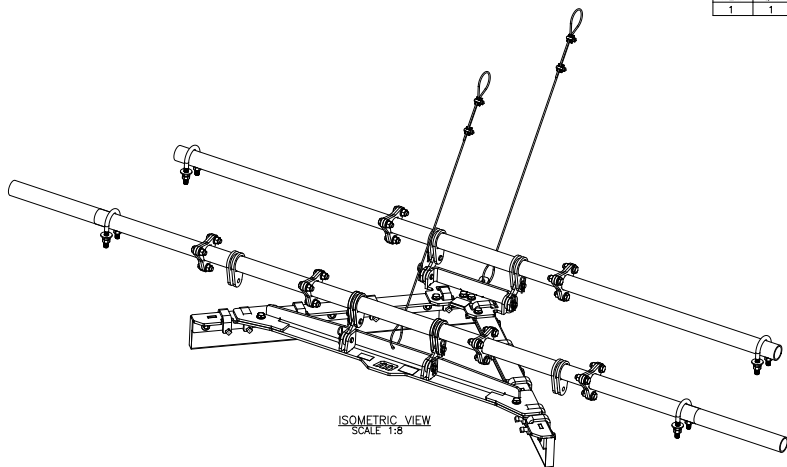
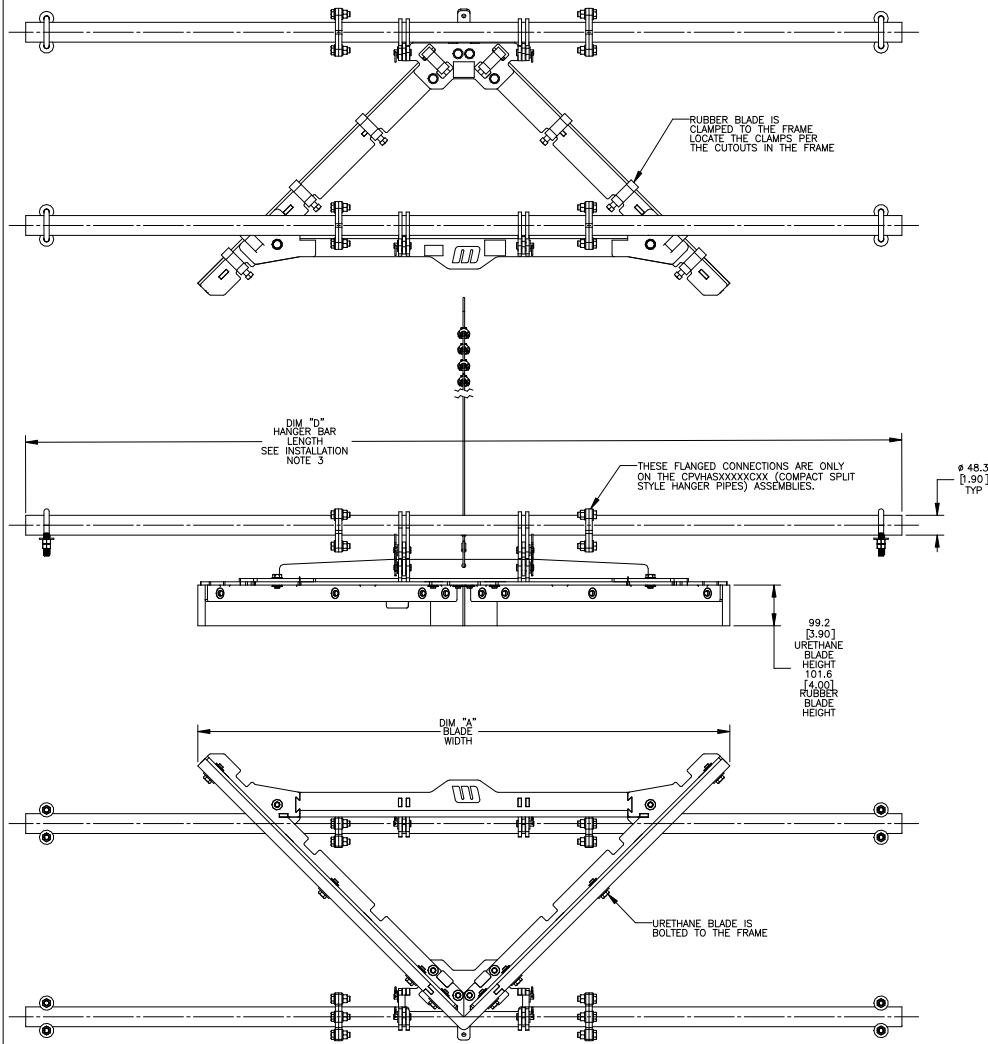


ASSEMBLY PART NUMBER	DIM "A"	DIM "B"	DIM "C"	DIM "D"	APPROX WEIGHT KG
CPVHAS30XXXXXX	838.2 [33.00]	424.7 [16.72]	318.0 [12.52]	1876.4 [66.00]	42.5
CPVHAS36XXXXXX	990.6 [39.00]	498.8 [19.64]	318.0 [12.52]	1828.8 [72.00]	46.0
CPVHAS42XXXXXX	1143.0 [45.00]	578.7 [22.78]	470.4 [18.52]	1981.2 [78.00]	51.0
CPVHAS48XXXXXX	1295.4 [51.00]	651.2 [25.64]	470.4 [18.52]	2133.6 [84.00]	54.0
CPVHAS54XXXXXX	1447.8 [57.00]	727.4 [28.64]	470.4 [18.52]	2286.0 [90.00]	57.5
CPVHAS60XXXXXX	1600.2 [63.00]	803.6 [31.64]	673.6 [26.52]	2438.4 [96.00]	63.0
CPVHAS66XXXXXX	1752.6 [69.00]	879.8 [34.64]	673.6 [26.52]	2590.8 [102.00]	66.5
CPVHAS72XXXXXX	1905.0 [75.00]	956.0 [37.64]	673.6 [26.52]	2743.2 [108.00]	69.5
CPVHAS78XXXXXX	2057.4 [81.00]	1032.2 [40.64]	902.2 [35.52]	2895.6 [114.00]	78.0
CPVHAS84XXXXXX	2209.8 [87.00]	1108.4 [43.64]	902.2 [35.52]	3048.0 [120.00]	81.5
CPVHAS96XXXXXX	2514.6 [99.00]	1260.8 [49.64]	902.2 [35.52]	3352.8 [132.00]	88.0
CPVHASA8XXXXXX	2819.4 [111.00]	1413.2 [55.64]	1283.2 [50.52]	3657.6 [144.00]	99.5
CPVHASCOXXXXXX	3124.2 [123.00]	1565.6 [61.64]	1283.2 [50.52]	3962.4 [156.00]	106.0



- NOTES:
- 1) ALL DIMENSIONS ARE GIVEN IN MILLIMETERS [INCHES].
  - 2) ALL DIMENSIONS ARE FOR REFERENCE ONLY.
  - 3) IN THE PART NUMBER THE SIX AFTER THE CPVHA INDICATES THE BELT WIDTH IN STANDARD INCH UNITS FOR BELT WIDTHS 18.00 THRU 96.00.  
SAB = 108.00 INCHES  
SCD = 120.00 INCHES  
THE NEXT X INDICATES THE BLADE TYPE:  
R = RUBBER BLADE (1 PC BLADE) (CLAMPED TO THE FRAME)  
O = ORANGE URETHANE BLADE (3 PC BLADE)  
B = BROWN URETHANE BLADE (3 PC BLADE)  
G = GREEN URETHANE BLADE (3 PC BLADE) (BOLTED TO THE FRAME)  
THE NEXT TWO XX'S INDICATE THE HANGER ARM USED:  
01 = 01 HANGER ARM THRU 04 = 04 HANGER ARM (SEE CHART FOR SIZE)  
THE NEXT X INDICATES THE HANGER PIPE TYPE:  
C = COMPACT SPLIT STYLE HANGER PIPES  
S = 1 PIECE SOLID STYLE HANGER PIPES  
THE NEXT X INDICATES THE TYPE OF STEEL MATERIAL USED:  
T = PAINTED MILD STEEL  
S = 304 STAINLESS STEEL  
F = 316 STAINLESS STEEL  
THE LAST X INDICATES THE ASSEMBLY OPTIONS:  
A = UNIT IS SHIPPED ASSEMBLED  
B = UNIT IS SHIPPED ASSEMBLED WITH HUB MOUNT KIT.  
U = UNIT IS SHIPPED UNASSEMBLED  
V = UNIT IS SHIPPED UNASSEMBLED WITH HUB MOUNT KIT  
4) WARNING LABELS (P/N'S 23305 AND 38277) ARE SHIPPED LOOSE AND ARE TO BE PLACED ON BOTH SIDES OF THE CONVEYOR NEAR THE PRODUCT.

FRAME MATERIAL CHART	
ASSEMBLY PART NUMBER	FRAME MATERIAL
CPVHASXXXXXTX	MILD STEEL (PAINTED)
CPVHASXXXXXSX	304 STAINLESS STEEL
CPVHASXXXXXFX	316 STAINLESS STEEL

BLADE CHART			
ASSEMBLY PART NUMBER	URETHANE SIDE BLADE P/N	RUBBER BLADE P/N	
CPVHAS30RXXCXX	CPVHBS30X	CPVHBS30R	
CPVHAS30XXXXCXX	CPVHBS30X	CPVHBS30R	
CPVHAS36RXXCXX	CPVHBS36X	CPVHBS36R	
CPVHAS36XXXXCXX	CPVHBS36X	CPVHBS36R	
CPVHAS42RXXCXX	CPVHBS42X	CPVHBS42R	
CPVHAS42XXXXCXX	CPVHBS42X	CPVHBS42R	
CPVHAS48RXXCXX	CPVHBS48X	CPVHBS48R	
CPVHAS48XXXXCXX	CPVHBS48X	CPVHBS48R	
CPVHAS54RXXCXX	CPVHBS54X	CPVHBS54R	
CPVHAS54XXXXCXX	CPVHBS54X	CPVHBS54R	
CPVHAS60RXXCXX	CPVHBS60X	CPVHBS60R	
CPVHAS60XXXXCXX	CPVHBS60X	CPVHBS60R	
CPVHAS66RXXCXX	CPVHBS66X	CPVHBS66R	
CPVHAS66XXXXCXX	CPVHBS66X	CPVHBS66R	
CPVHAS72RXXCXX	CPVHBS72X	CPVHBS72R	
CPVHAS72XXXXCXX	CPVHBS72X	CPVHBS72R	
CPVHAS78RXXCXX	CPVHBS78X	CPVHBS78R	
CPVHAS78XXXXCXX	CPVHBS78X	CPVHBS78R	
CPVHAS84RXXCXX	CPVHBS84X	CPVHBS84R	
CPVHAS84XXXXCXX	CPVHBS84X	CPVHBS84R	
CPVHAS96RXXCXX	CPVHBS96X	CPVHBS96R	
CPVHAS96XXXXCXX	CPVHBS96X	CPVHBS96R	
CPVHASA8RXXCXX	CPVHBSA8X	CPVHBSA8R	
CPVHASA8XXXXCXX	CPVHBSA8X	CPVHBSA8R	
CPVHASCOXXCXX	CPVHBSCOX	CPVHBSCOR	
CPVHASCOXXXXCXX	CPVHBSCOX	CPVHBSCOR	

URETHANE BLADE COLOR CHART			
ASSEMBLY PART NUMBER	URETHANE NOSE P/N	URETHANE SIDE BLADE P/N	BLADE COLOR
CPVHASXXXXXXCXX	CPVHB0010	CPVHBSXX0	ORANGE
CPVHASXXBXXXXX	CPVHB001B	CPVHBSXXB	BROWN
CPVHASXXGXXXXX	CPVHB001G	CPVHBSXXG	GREEN

HANGER ARM CHART				
ASSEMBLY PART NUMBER	HANGER ARM P/N	DIM "E" MIN.	DIM "F" MAX.	DIM "G" MAX.
CPVHASXX01XXCXX	CPVTP1002201X	65 [2.56]	215 [8.46]	255 [10.04]
CPVHASXX02XXCXX	CPVTP1002202X	175 [6.89]	325 [12.79]	365 [14.37]
CPVHASXX03XXCXX	CPVTP1002203X	200 [7.87]	350 [13.77]	390 [15.35]
CPVHASXX04XXCXX	CPVTP1002204X	300 [11.81]	450 [17.71]	490 [19.29]

- INSTALLATION NOTES:
- 1) REFER TO OPERATORS MANUAL FOR PROPER INSTALLATION AND MAINTENANCE INSTRUCTIONS. ALSO REFER TO THE MANUAL FOR REPLACEMENT PARTS.
  - 2) V-PLOW IS DESIGNED FOR TAIL PULLEY PROTECTION ONLY. NOT FOR REMOVING MATERIAL CARRYBACK.
  - 3) HANGER BARS ARE LONGER THAN REQUIRED. FIELD MODIFY THE LENGTH AS NEEDED FOR PROPER MOUNTING. IF MOUNTED THRU THE STRINGER OR STEEL PLATE DRILL OR CUT 2-1/2" DIAMETER HOLES FOR MOUNTING THE HANGER BARS.
  - 4) THE LANYARD CABLES ARE TO BE MOUNTED TO THE CONVEYOR STRUCTURE.

SHEET 2 OF 4

© Copyright 2018 Martin Engineering. All rights reserved. Covered by U.S. and foreign patents pending and issued. ® and TM indicate trademarks of Martin Engineering.



MARTIN ENGINEERING-USA  
NEPONSET, IL USA

C	ADDED SHEET 4	15716	06/27/20	MH	TITLE	DRAWN	RND
B	(SHT 1 & 2) ADDED HUB MOUNT KIT OPTIONS TO NOTE (P21305)	-----	11/06/19	JNH	V-PLOW MODULAR ASM 30 - 120 BELT WIDTHS	DATE	09/13/18
A	(SHT 1 & 2) UPDATED DIM "F" & DIM "G" IN CHART / (SHT 3) ADDED LANE BAR LOADED BOLT	15317	02/25/19	RND	ENG. <b>349</b>	CHECKED	09/20/2018
NO.	DESCRIPTION	EON	DATE	BY	SALES DRAWING	APPROVED <b>382</b>	DATE 9/27/2018
SOLIDWORKS	REVISION	PR13654				SCALE	5:32