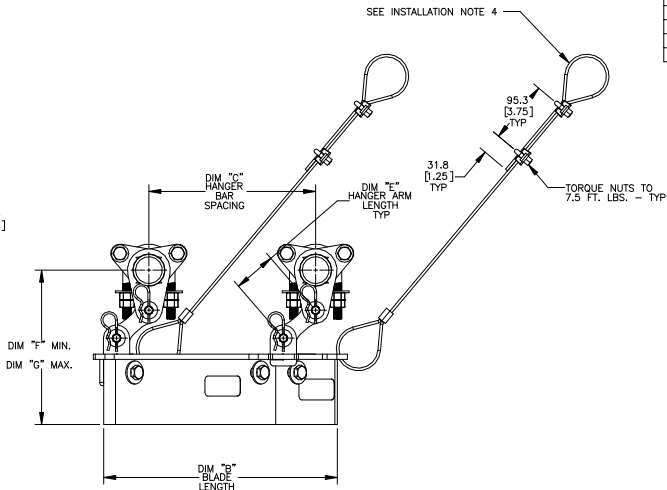
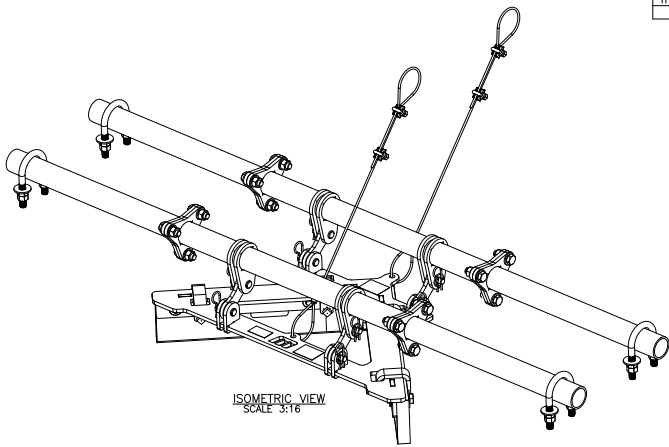
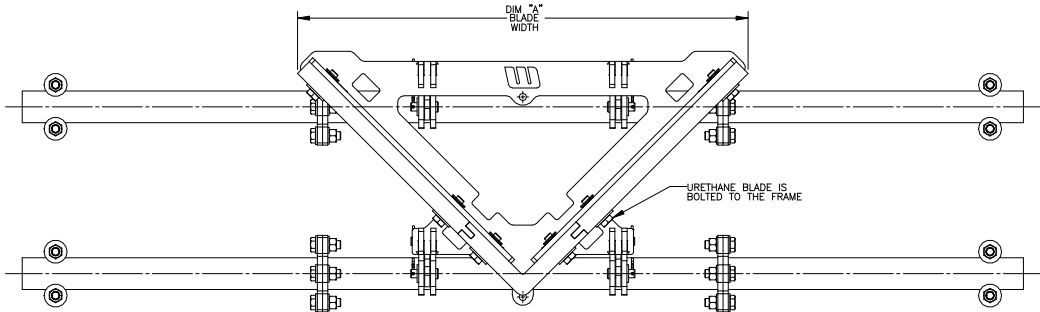
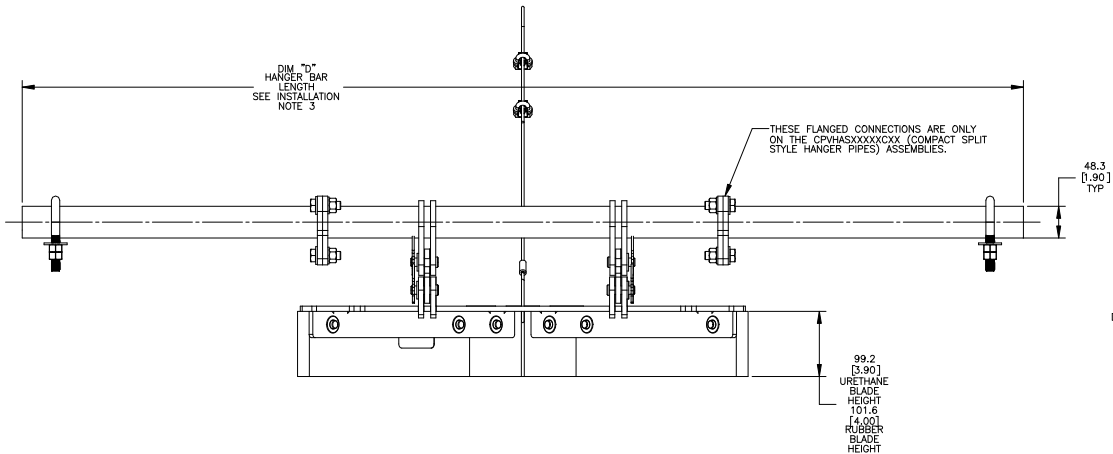
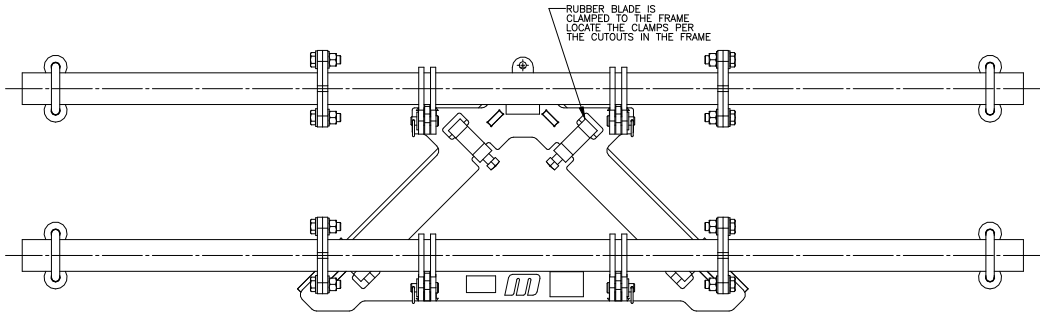


ASSEMBLY PART NUMBER	DIM "A"	DIM "B"	DIM "C"	DIM "D"	APPROX. WEIGHT KG
CPVHAS18XXXXXX	525 [20.67]	279 [11.00]	178 [6.99]	1372 [54.00]	29
CPVHAS24XXXXXX	686 [27.00]	356 [14.00]	254 [9.99]	1524 [60.00]	33



- INSTALLATION NOTES:
- 1) REFER TO OPERATORS MANUAL FOR PROPER INSTALLATION AND MAINTENANCE INSTRUCTIONS. ALSO REFER TO THE MANUAL FOR REPLACEMENT PARTS.
 - 2) V-PLOW IS DESIGNED FOR TAIL PULLEY PROTECTION ONLY. NOT FOR REMOVING MATERIAL CARRYBACK.
 - 3) HANGER BARS ARE LONGER THAN REQUIRED. FIELD MODIFY THE LENGTH AS NEEDED FOR PROPER MOUNTING. IF MOUNTED THRU THE STRINGER OR STEEL PLATE DRILL OR CUT 2-1/2" DIAMETER HOLES FOR MOUNTING THE HANGER BARS.
 - 4) THE LANYARD CABLES ARE TO BE MOUNTED TO THE CONVEYOR STRUCTURE.

FRAME MATERIAL CHART			
ASSEMBLY PART NUMBER	FRAME MATERIAL	URETHANE SIDE BLADE P/N	RUBBER BLADE P/N
CPVHASXXXXXXTX	MILD STEEL (PAINTED)	CPVHBS18X	CPVHBS18R
CPVHASXXXXXXSX	304 STAINLESS STEEL	CPVHBS18X	CPVHBS18R
CPVHASXXXXXXFX	316 STAINLESS STEEL	CPVHBS18X	CPVHBS18R

BLADE CHART			
ASSEMBLY PART NUMBER	URETHANE SIDE BLADE P/N	RUBBER BLADE P/N	BLADE COLOR
CPVHAS18XXXXXX	CPVHBS18X	CPVHBS18R	ORANGE
CPVHAS18XXXXXX	CPVHBS18X	CPVHBS18R	BROWN
CPVHAS24XXXXXX	CPVHBS24X	CPVHBS24R	GREEN
CPVHAS24XXXXXX	CPVHBS24X	CPVHBS24R	GREEN

URETHANE BLADE COLOR CHART			
ASSEMBLY PART NUMBER	URETHANE NOSE P/N	URETHANE SIDE BLADE P/N	BLADE COLOR
CPVHASXXXXXXXX	CPVHB0010	CPVHBSXX0	ORANGE
CPVHASXXBXXXXX	CPVHB001B	CPVHBSXXB	BROWN
CPVHASXXGXXXXX	CPVHB001G	CPVHBSXXG	GREEN

HANGER ARM CHART				
ASSEMBLY PART NUMBER	HANGER ARM P/N	DIM "E" MIN.	DIM "F" MIN.	DIM "G" MAX.
CPVHASXX01XXX	CPVTP1002201X	65 [2.56]	215 [8.46]	255 [10.04]
CPVHASXX02XXX	CPVTP1002202X	175 [6.89]	325 [12.79]	365 [14.37]
CPVHASXX03XXX	CPVTP1002203X	200 [7.87]	350 [13.77]	390 [15.35]
CPVHASXX04XXX	CPVTP1002204X	300 [11.81]	450 [17.71]	490 [19.29]

- NOTES:
- 1) ALL DIMENSIONS ARE GIVEN IN MILLIMETERS [INCHES].
 - 2) ALL DIMENSIONS ARE FOR REFERENCE ONLY.
 - 3) IN THE PART NUMBER THE SOX AFTER THE CPVHA INDICATES THE BELT WIDTH IN STANDARD INCH UNITS FOR BELT WIDTHS 18.00 THRU 96.00.
SAB = 108.00 INCHES
SCO = 120.00 INCHES
THE NEXT X INDICATES THE BLADE TYPE:
R = RUBBER BLADE (1 PC BLADE)
(CLAMPED TO THE FRAME)
O = ORANGE URETHANE BLADE (3 PC BLADE)
B = BROWN URETHANE BLADE (3 PC BLADE)
G = GREEN URETHANE BLADE (3 PC BLADE)
(BOLTED TO THE FRAME)
THE NEXT TWO XX'S INDICATE THE HANGER ARM USED:
01 = 01 HANGER ARM THRU 04 = 04 HANGER ARM
(SEE CHART FOR SIZE)
THE NEXT X INDICATES THE HANGER PIPE TYPE:
C = COMPACT SPLIT STYLE HANGER PIPES
S = 1 PIECE SOLID STYLE HANGER PIPES
THE NEXT X INDICATES THE TYPE OF STEEL MATERIAL USED:
F = PAINTED MILD STEEL
S = 304 STAINLESS STEEL
F = 316 STAINLESS STEEL
THE LAST X INDICATES THE ASSEMBLY OPTIONS:
A = UNIT IS SHIPPED ASSEMBLED
B = UNIT IS SHIPPED ASSEMBLED WITH HUB MOUNT KIT.
U = UNIT IS SHIPPED UNASSEMBLED
V = UNIT IS SHIPPED UNASSEMBLED WITH HUB MOUNT KIT
WARNING LABELS (P/N'S 23305 AND 38277) ARE SHIPPED LOOSE AND ARE TO BE PLACED ON BOTH SIDES OF THE CONVEYOR NEAR THE PRODUCT.

SHEET 1 OF 4

C	ADDED SHEET 4	15716	08/27/20	MH	TITLE	V-PLOW MODULAR ASM 18 & 24 BELT WIDTHS	DRAWN RND DATE 09/13/18 CHECKED
B	(SHT 1 & 2) ADDED HUB MOUNT KIT OPTIONS TO NOTE (P213062)	-----	11/06/19	JAH	SALES DRAWING		ENG. DATE 9/20/2018 APPROVED RND DATE 9/27/2018
A	(SHT 1 & 2) UPDATED DIM "F" & DIM "G" IN CHART / (SHT 3) ADDED 2PC BAR LOADED MODE	15317	02/25/19	RND	SALES DRAWING		SCALE 1:4
NO.	DESCRIPTION	EON	DATE	BY	SALES DRAWING		
SOLIDWORKS	REVISION				SALES DRAWING		

© Copyright 2018 Martin Engineering. All rights reserved. Covered by U.S. and foreign patents pending and issued. M and TE indicate trademarks of Martin Engineering.	
	MARTIN ENGINEERING-USA NEPOMNET, IL USA