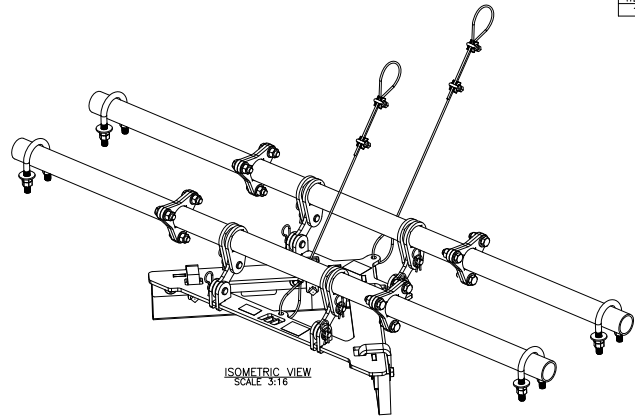
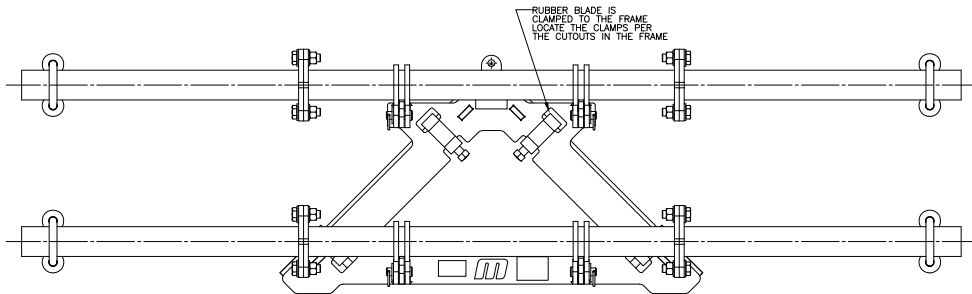


ASSEMBLY PART NUMBER	DIM "A"	DIM "B"	DIM "C"	DIM "D"	APPROX. WEIGHT KG
CPVHAS18XXXXXX	525 [20.67]	279 [11.00]	178 [6.99]	1372 [54.00]	29
CPVHAS24XXXXXX	686 [27.00]	356 [14.00]	254 [9.99]	1524 [60.00]	33

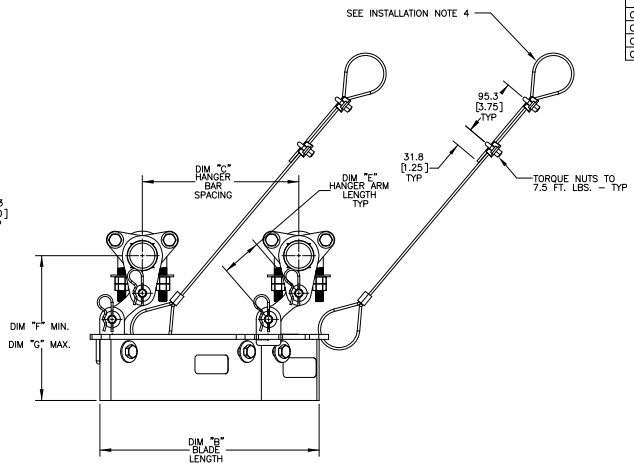
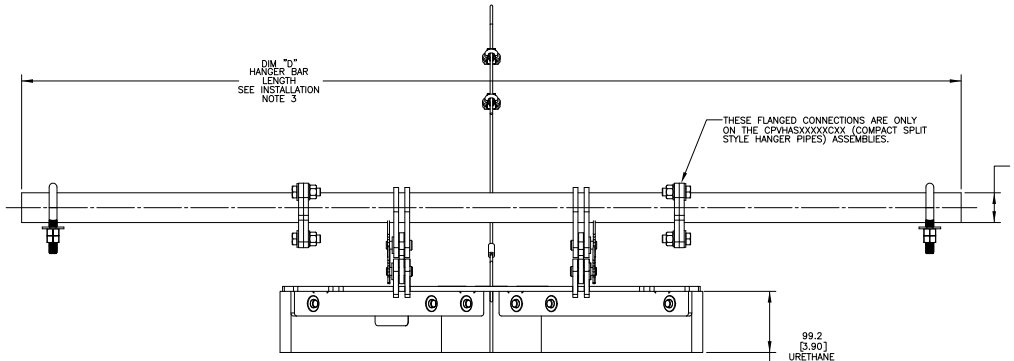


FRAME MATERIAL CHART	
ASSEMBLY PART NUMBER	FRAME MATERIAL
CPVHASXXXXXXTX	MILD STEEL (PAINTED)
CPVHASXXXXXXSX	304 STAINLESS STEEL
CPVHASXXXXXXFX	316 STAINLESS STEEL

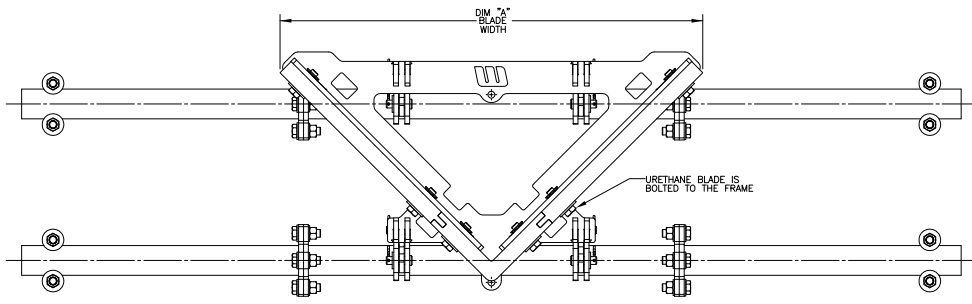
BLADE CHART		
ASSEMBLY PART NUMBER	URETHANE SIDE BLADE P/N	RUBBER BLADE P/N
CPVHAS18XXXXXX	CPVHBS18X	CPVHBS18R
CPVHAS18XXXXXX	CPVHBS18X	CPVHBS18R
CPVHAS24XXXXXX	CPVHBS24X	CPVHBS24R
CPVHAS24XXXXXX	CPVHBS24X	CPVHBS24R

URETHANE BLADE COLOR CHART			
ASSEMBLY PART NUMBER	URETHANE NOSE P/N	URETHANE SIDE BLADE P/N	BLADE COLOR
CPVHASXXXXXXXXX	CPVHB0010	CPVHBSXXX	ORANGE
CPVHASXXXXXXXXX	CPVHB001B	CPVHBSXXB	BROWN
CPVHASXXXXXXXXX	CPVHB001G	CPVHBSXXG	GREEN

HANGER ARM CHART				
ASSEMBLY PART NUMBER	HANGER ARM P/N	DIM "C" MIN.	DIM "F" MIN.	DIM "G" MAX.
CPVHASXXXXXX	CPVTP1002201X	65 [2.56]	215 [8.46]	255 [10.04]
CPVHASXXXXXX	CPVTP1002202X	175 [6.89]	225 [12.79]	365 [14.37]
CPVHASXXXXXX	CPVTP1002203X	200 [7.87]	350 [13.77]	390 [15.35]
CPVHASXXXXXX	CPVTP1002204X	300 [11.81]	450 [17.71]	490 [19.29]

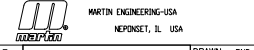


NOTES:
 1) ALL DIMENSIONS ARE GIVEN IN MILLIMETERS [INCHES].
 2) ALL DIMENSIONS ARE FOR REFERENCE ONLY.
 3) IN THE PART NUMBER THE 'XXX' AFTER THE CPVHA INDICATES THE BELT WIDTH IN STANDARD INCH UNITS FOR BELT WIDTHS 18.00 THRU 96.00.
 SAB = 108.00 INCHES
 SCD = 120.00 INCHES
 THE NEXT X INDICATES THE BLADE TYPE:
 R = RUBBER BLADE (1 PC BLADE) (CLAMPED TO THE FRAME)
 O = ORANGE URETHANE BLADE (3 PC BLADE)
 B = BROWN URETHANE BLADE (3 PC BLADE)
 G = GREEN URETHANE BLADE (3 PC BLADE) (BOLTED TO THE FRAME)
 THE NEXT TWO X'S INDICATE THE HANGER ARM USED:
 01 = 01 HANGER ARM THRU 04 = 04 HANGER ARM (SEE CHART FOR SIZE)
 THE NEXT X INDICATES THE HANGER PIPE TYPE:
 C = COMPACT SPLIT STYLE HANGER PIPES
 S = 1" PIECE SOLID STYLE HANGER PIPES
 THE NEXT X INDICATES THE TYPE OF STEEL MATERIAL USED:
 T = PAINTED MILD STEEL
 S = 304 STAINLESS STEEL
 F = 316 STAINLESS STEEL
 THE LAST X INDICATES THE ASSEMBLY OPTIONS:
 A = UNIT IS SHIPPED ASSEMBLED
 B = UNIT IS SHIPPED ASSEMBLED WITH HUB MOUNT KIT.
 U = UNIT IS SHIPPED UNASSEMBLED
 V = UNIT IS SHIPPED UNASSEMBLED WITH HUB MOUNT KIT
 ⚠ WARNING LABELS (P/N'S 3136 AND 3527) ARE SHIPPED LOOSE AND ARE TO BE PLACED ON BOTH SIDES OF THE CONVEYOR NEAR THE PRODUCT.



- INSTALLATION NOTES:
 1) REFER TO OPERATORS MANUAL FOR PROPER INSTALLATION AND MAINTENANCE INSTRUCTIONS. ALSO REFER TO THE MANUAL FOR REPLACEMENT PARTS.
 2) V-FLOW IS DESIGNED FOR TAIL PULLEY PROTECTION ONLY. NOT FOR REMOVING MATERIAL CARRYBACK.
 3) HANGER BARS ARE LONGER THAN REQUIRED. FIELD MODIFY THE LENGTH AS NEEDED FOR PROPER MOUNTING. IF MOUNTED THRU THE STRINGER OR STEEL PLATE DRILL OR CUT 2-1/2" DIAMETER HOLES FOR MOUNTING THE HANGER BARS.
 4) THE LANYARD CABLES ARE TO BE MOUNTED TO THE CONVEYOR STRUCTURE.

© Copyright 2018 Martin Engineering. All rights reserved. Covered by U.S. and foreign patents pending and issued. Ⓜ and TM indicate trademarks of Martin Engineering.



NO.	DESCRIPTION	DATE	BY	REVISION
C	ADDED SHEET 4	15/16	08/27/20	MH
B	(SHT 1 & 2) ADDED HUB MOUNT KIT OPTIONS TO NOTE (REV 3) ADDED OPTION: HUB MOUNT DETAILS (REV 3/2018)	15/17	11/06/19	JAH
A	(SHT 1 & 2) UPDATED DIM "F" & DIM "G" IN CHART / (SHT 3) ADDED PIPE END LEADER NOTE	15/17	02/22/19	RND

TITLE	DRAWN	RND
V-FLOW MODULAR ASM 18 & 24 BELT WIDTHS	JAH	RND
SALES DRAWING	DATE: 8/20/2018	SCALE: 1/4"
PR13654	S50126	