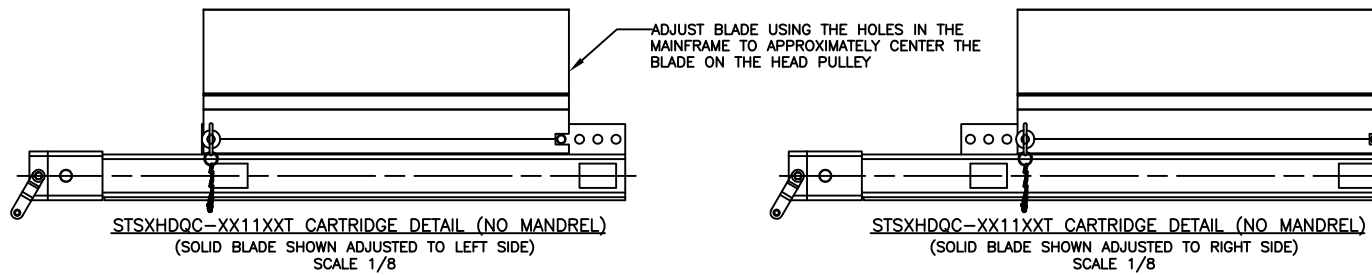
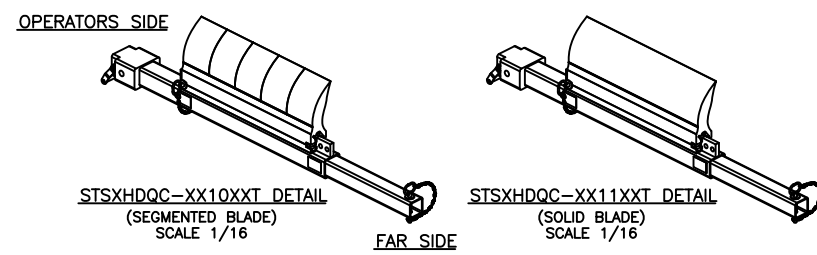
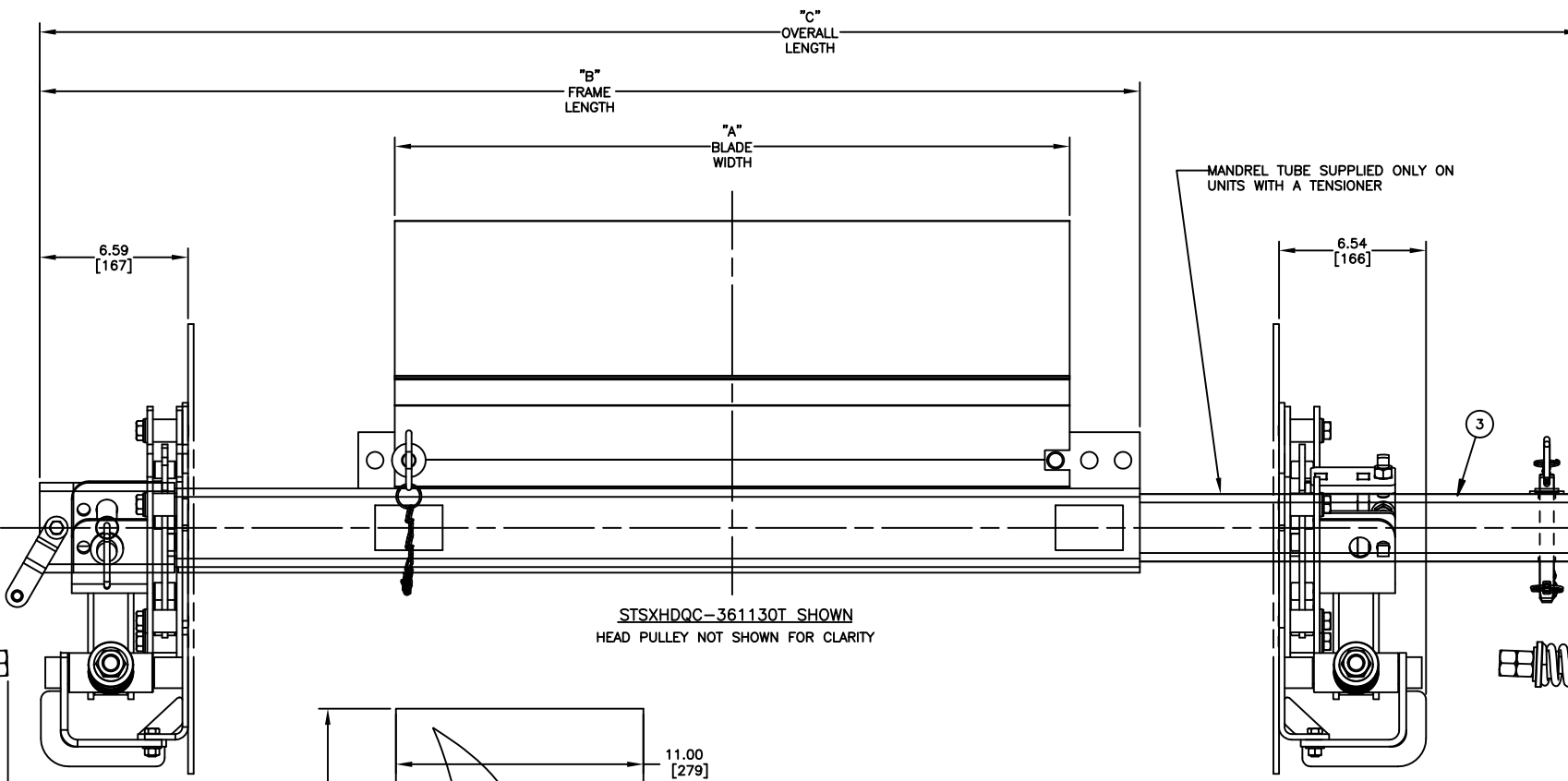
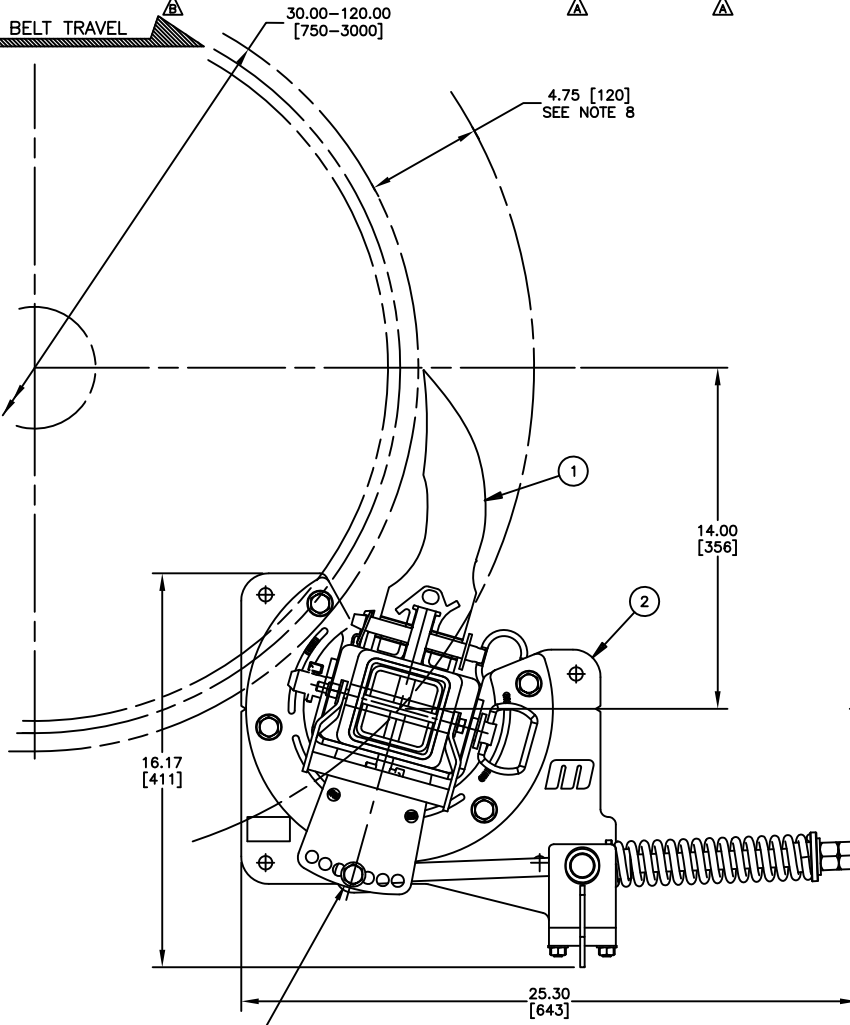


PART NUMBER	BELT WIDTH	DIMENSION "A" BLADE WIDTH	DIMENSION "B" FRAME LENGTH	DIMENSION "C" OVERALL LENGTH	PART NO. ITEM 2	PART NO. ITEM 3
STXHDQC-24XX12XXT	24.00 [500-650]	12.00 [305]	36.91 [938]	56.50 [1435]	39100-XHDS1SQ	37802-24
STXHDQC-24XX18XXT	24.00 [500-650]	18.00 [457]	36.91 [938]	56.50 [1435]	39100-XHDS1SQ	37802-24
STXHDQC-30XX18XXT	30.00 [650-800]	18.00 [457]	42.91 [1090]	62.50 [1588]	39100-XHDS1SQ	37802-30
STXHDQC-30XX24XXT	30.00 [650-800]	24.00 [610]	42.91 [1090]	62.50 [1588]	39100-XHDS1SQ	37802-30
STXHDQC-36XX24XXT	36.00 [800-1000]	24.00 [610]	48.91 [1242]	68.50 [1740]	39100-XHDS1SQ	37802-36
STXHDQC-36XX30XXT	36.00 [800-1000]	30.00 [762]	48.91 [1242]	68.50 [1740]	39100-XHDS1SQ	37802-36
STXHDQC-42XX30XXT	42.00 [1000-1200]	30.00 [762]	54.91 [1395]	74.50 [1892]	39100-XHDS1SQ	37802-42
STXHDQC-42XX36XXT	42.00 [1000-1200]	36.00 [914]	54.91 [1395]	74.50 [1892]	39100-XHDS1SQ	37802-42
STXHDQC-48XX36XXT	48.00 [1200-1400]	36.00 [914]	60.91 [1547]	80.50 [2045]	39100-XHDS1SQ	37802-48
STXHDQC-48XX42XXT	48.00 [1200-1400]	42.00 [1067]	60.91 [1547]	80.50 [2045]	39100-XHDS1SQ	37802-48
STXHDQC-54XX36XXT	54.00 [1400-1600]	36.00 [914]	66.91 [1700]	86.50 [2197]	39100-XHDS2SQ	37802-54
STXHDQC-54XX42XXT	54.00 [1400-1600]	42.00 [1067]	66.91 [1700]	86.50 [2197]	39100-XHDS2SQ	37802-54
STXHDQC-54XX48XXT	54.00 [1400-1600]	48.00 [1219]	66.91 [1700]	86.50 [2197]	39100-XHDS2SQ	37802-54
STXHDQC-60XX42XXT	60.00 [1600-1800]	42.00 [1067]	72.91 [1852]	92.50 [2350]	39100-XHDS2SQ	37802-60
STXHDQC-60XX48XXT	60.00 [1600-1800]	48.00 [1219]	72.91 [1852]	92.50 [2350]	39100-XHDS2SQ	37802-60
STXHDQC-60XX54XXT	60.00 [1600-1800]	54.00 [1372]	72.91 [1852]	92.50 [2350]	39100-XHDS2SQ	37802-60
STXHDQC-66XX48XXT	66.00 [1600-1800]	48.00 [1219]	78.91 [2004]	98.50 [2502]	39100-XHDS2SQ	37802-66
STXHDQC-66XX54XXT	66.00 [1600-1800]	54.00 [1372]	78.91 [2004]	98.50 [2502]	39100-XHDS2SQ	37802-66
STXHDQC-66XX60XXT	66.00 [1600-1800]	60.00 [1524]	78.91 [2004]	98.50 [2502]	39100-XHDS2SQ	37802-66
STXHDQC-72XX54XXT	72.00 [1800-2000]	54.00 [1372]	84.91 [2157]	104.50 [2654]	39100-XHDS2SQ	37802-72
STXHDQC-72XX60XXT	72.00 [1800-2000]	60.00 [1524]	84.91 [2157]	104.50 [2654]	39100-XHDS2SQ	37802-72
STXHDQC-72XX66XXT	72.00 [1800-2000]	66.00 [1676]	84.91 [2157]	104.50 [2654]	39100-XHDS2SQ	37802-72
STXHDQC-78XX60XXT	78.00 [1900-2100]	60.00 [1524]	90.91 [2309]	110.50 [2807]	39100-XHDS2SQ	37802-78
STXHDQC-78XX66XXT	78.00 [1900-2100]	66.00 [1676]	90.91 [2309]	110.50 [2807]	39100-XHDS2SQ	37802-78
STXHDQC-78XX72XXT	78.00 [1900-2100]	72.00 [1829]	90.91 [2309]	110.50 [2807]	39100-XHDS2SQ	37802-78

ITEM	QTY.	DESCRIPTION	PART NUMBER
1	1	MARTIN® STS XHD QC1™ MAINFRAME ASM	STXHDQC-XXXXXXXT
2	1	STS XHD SPRING TENSIONER ASM	SEE CHART
3	1	STS XHD QC1™ MANDREL WELDMENT SS	SEE CHART

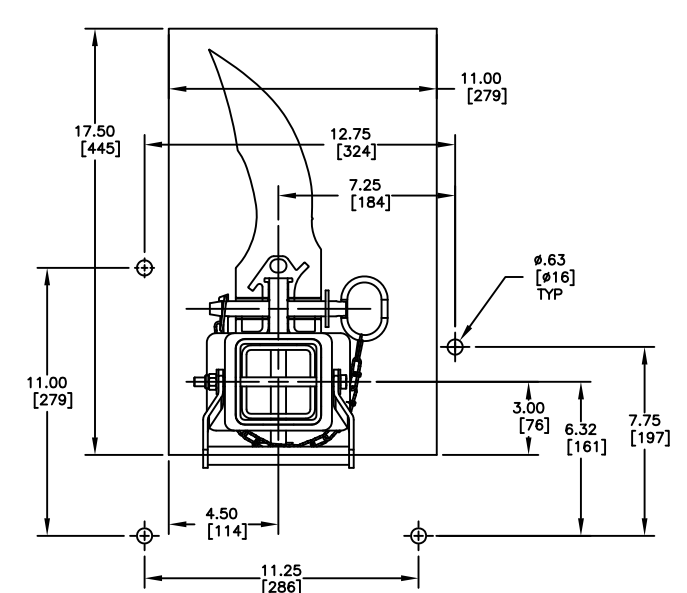
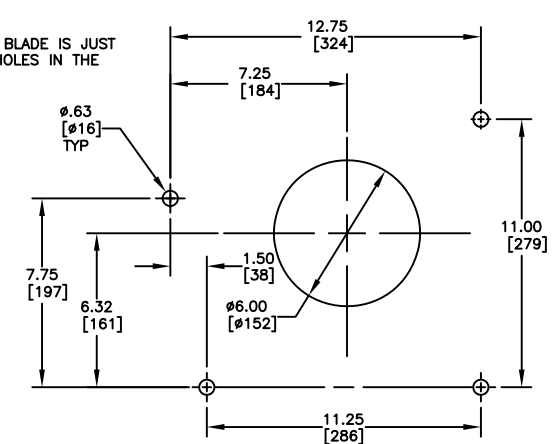
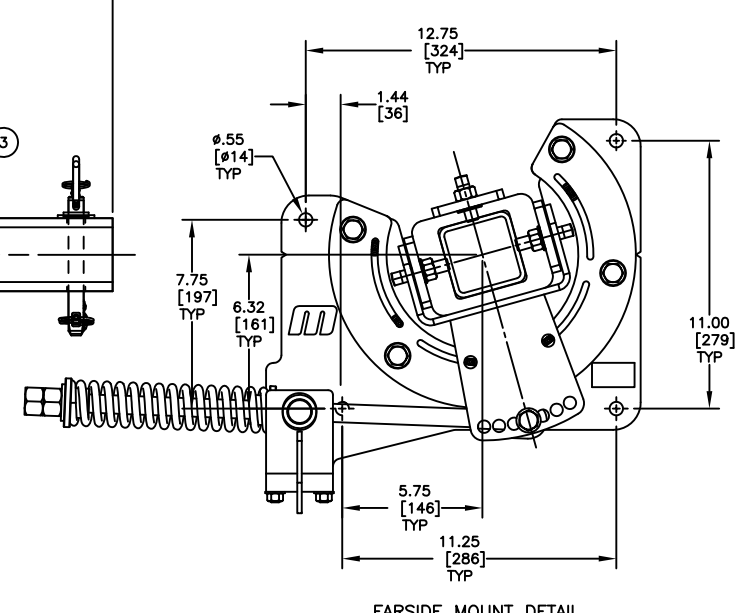


- NOTES:
- 1) ALL DIMENSIONS ARE GIVEN IN INCHES [MM] AND ARE FOR REFERENCE ONLY.
  - 2) IN THE STSXHDQC-XXXXXXXT PART NUMBER THE FIRST "XX" INDICATES BELT WIDTH. THE NEXT TWO "XX" INDICATES BLADE TYPE SOLID (1) OR SEGMENTED (10). THE NEXT TWO "XX" INDICATES THE BLADE COLOR (SEE BLADE COLOR CHART). THE LAST "X" INDICATES IF A TENSIONER (T)/MANDREL TUBE ARE INCLUDED. EXAMPLES:  
STSXHDQC-361130T = 36" BELT WIDTH, 30" SOLID ORANGE BLADE WITH A SPRING TENSIONER/MANDREL.  
STSXHDQC-361024 = 36" BELT WIDTH, 24" SEGMENTED ORANGE BLADE WITHOUT A SPRING TENSIONER/MANDREL.
  - 3) THE PRE-CLEANER BLADE IS DESIGNED FOR HEAD PULLEY'S WITH A MINIMUM EFFECTIVE DIAMETER OF 16.00 [400]. SEE MOUNTING LOCATION CHART.
  - 4) CLEANER IS SHOWN IN RECOMMENDED WORKING POSITION.
  - 5) WHERE EXTREME OR UNUSUAL CONDITIONS EXIST, OR SPECIAL MAINFRAME LENGTHS ARE REQUIRED CONTACT MARTIN ENGINEERING.
  - 6) SPRING TENSIONER MAY BE BOLTED OR WELDED IN PLACE. MARTIN ENGINEERING RECOMMENDS BOLTING WHEN APPLICABLE FOR EASIER MAINTENANCE AND ACCESSIBILITY.
  - 7) REFER TO OPERATOR'S MANUAL M3987 FOR COMPLETE INSTALLATION INSTRUCTIONS.
  - 8) CLEANER CAN BE LOCATED ANYWHERE ALONG THE ARC, AS LONG AS THE MAINFRAME IS OUT OF MATERIAL TRAJECTORY AND THE BLADE TIPS ARE BELOW THE HORIZONTAL CENTERLINE OF THE HEAD PULLEY.
  - 9) THE XHD QC1 PRE-CLEANER BLADES ARE DESIGNED TO REMOVE HEAVY CARRYBACK ONLY. DO NOT OVERTENSION.
  - 10) BLADE COVERAGE IS LESS THAN BELT WIDTH, DUE TO POSSIBLE MISTRACKING OR DAMAGED EDGES OF THE BELT.



ASSEMBLY PART NO.	COLOR
STSXHDQC-XXXXXXXT	ORANGE
STSXHDQC-XXXXXXBRT	BROWN
STSXHDQC-XXXXXXCLT	TAN
STSXHDQC-XXXXXXGRG	GREEN
STSXHDQC-XXXXXXNBT	NAVY BLUE
*STSXHDQC-XXXXXXCYT	YELLOW W/BEADS

\* = ONLY OFFERED IN SEGMENTED (10)



© Copyright 2013 Martin Engineering. All rights reserved. Covered by U.S. and foreign patents pending and issued. ® and TM indicate trademarks of Martin Engineering.

F	RMD BLACK (B1) & YELLOW (Y1) COLOR OPTIONS FROM CHART / RMD SLIT OPTION FROM P/N NOTE / UPDATED PICTORIALY	10240	12/14/22	JAH
E	ADDED P/N STSXHDQC-78XXXXXXXT TO CHART (PR13954)	----	02/13/20	JAH
D	CHGD P/N FROM 39100-XHDS2SQ TO 39100-XHDS1SQ IN THE CHART FOR THE 48" BELT WIDTH SIZE.	15491	10/24/19	RND
C	ADDED 18" LESS BELT WIDTH P/N'S TO THE 54 THRU 72 BELT WIDTH ASM'S	14903	06/28/17	RND
B	CHGD THE TENSIONER LETTER DESIGNATOR AT THE END OF THE PART NUMBER FROM A "S" TO A "T"	14862	05/02/17	RND
A	CHGD TO SQ MANDREL TUBE. UPDATED DIM'S, CHGD P/N'S FROM 39100-XHDSX TO 39100-XHDS2SQ AND 39241-XX TO 37802-XX	14699	12/06/18	RND

NO.	DESCRIPTION	ECN	DATE	BY
	REVISION			

AutoCAD

MARTIN ENGINEERING-USA  
NEPONSET, IL USA

TITLE: MARTIN® STS XHD QC1™ ASM WITH SPRING TENS

SALES DRAWING: PR13111

ASSEMBLY: S50105-XHDS

DRAWN RND: DATE 12/14/15

CHECKED: ENG. JAH

DATE 12/14/15

APPROVED: DATE 12/15/16

SCALE 1/4