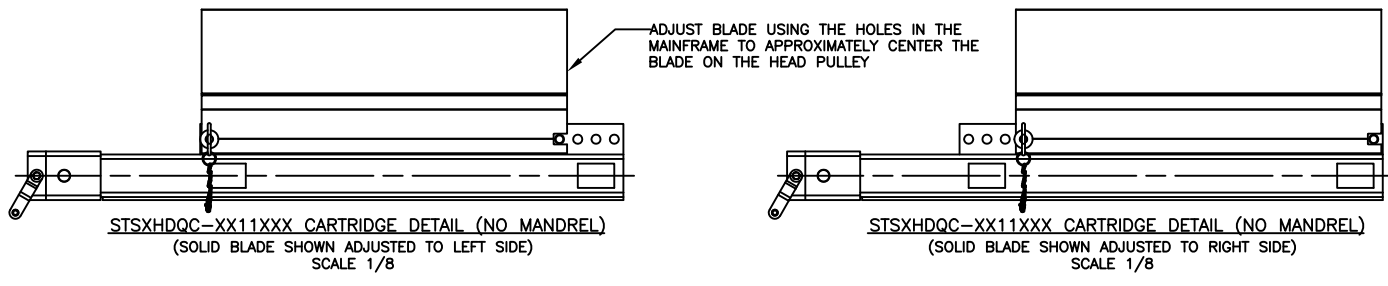
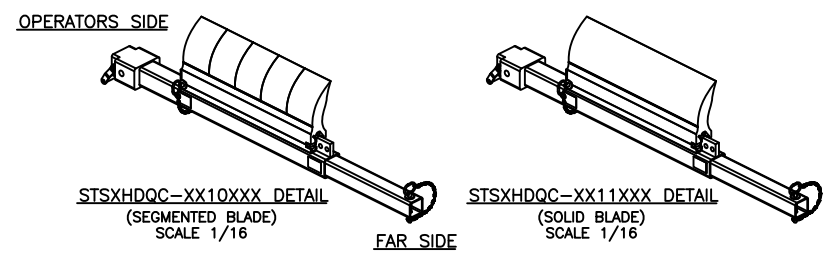


PART NUMBER	BELT WIDTH	DIMENSION "A" BLADE WIDTH	DIMENSION "B" FRAME LENGTH	DIMENSION "C" OVERALL LENGTH	PART NO. ITEM 3
STXHDQC-24XX12XXX	24.00 [500-650]	12.00 [305]	36.91 [938]	56.50 [1435]	37802-24
STXHDQC-24XX18XXX	24.00 [500-650]	18.00 [457]	36.91 [938]	56.50 [1435]	37802-24
STXHDQC-30XX18XXX	30.00 [650-800]	18.00 [457]	42.91 [1090]	62.50 [1588]	37802-30
STXHDQC-30XX24XXX	30.00 [650-800]	24.00 [610]	42.91 [1090]	62.50 [1588]	37802-30
STXHDQC-36XX24XXX	36.00 [800-1000]	24.00 [610]	48.91 [1242]	68.50 [1740]	37802-36
STXHDQC-36XX30XXX	36.00 [800-1000]	30.00 [762]	48.91 [1242]	68.50 [1740]	37802-36
STXHDQC-42XX30XXX	42.00 [1000-1200]	30.00 [762]	54.91 [1395]	74.50 [1892]	37802-42
STXHDQC-42XX36XXX	42.00 [1000-1200]	36.00 [914]	54.91 [1395]	74.50 [1892]	37802-42
STXHDQC-48XX36XXX	48.00 [1200-1400]	36.00 [914]	60.91 [1547]	80.50 [2045]	37802-48
STXHDQC-48XX42XXX	48.00 [1200-1400]	42.00 [1067]	60.91 [1547]	80.50 [2045]	37802-48
STXHDQC-54XX36XXX	54.00 [1400-1600]	36.00 [914]	66.91 [1700]	86.50 [2197]	37802-54
STXHDQC-54XX42XXX	54.00 [1400-1600]	42.00 [1067]	66.91 [1700]	86.50 [2197]	37802-54
STXHDQC-54XX48XXX	54.00 [1400-1600]	48.00 [1219]	66.91 [1700]	86.50 [2197]	37802-54
STXHDQC-60XX42XXX	60.00 [1600-1800]	42.00 [1067]	72.91 [1852]	92.50 [2350]	37802-60
STXHDQC-60XX48XXX	60.00 [1600-1800]	48.00 [1219]	72.91 [1852]	92.50 [2350]	37802-60
STXHDQC-60XX54XXX	60.00 [1600-1800]	54.00 [1372]	72.91 [1852]	92.50 [2350]	37802-60
STXHDQC-66XX48XXX	66.00 [1600-1800]	48.00 [1219]	78.91 [2004]	98.50 [2502]	37802-66
STXHDQC-66XX54XXX	66.00 [1600-1800]	54.00 [1372]	78.91 [2004]	98.50 [2502]	37802-66
STXHDQC-66XX60XXX	66.00 [1600-1800]	60.00 [1524]	78.91 [2004]	98.50 [2502]	37802-66
STXHDQC-72XX54XXX	72.00 [1800-2000]	54.00 [1372]	84.91 [2157]	104.50 [2654]	37802-72
STXHDQC-72XX60XXX	72.00 [1800-2000]	60.00 [1524]	84.91 [2157]	104.50 [2654]	37802-72
STXHDQC-72XX66XXX	72.00 [1800-2000]	66.00 [1676]	84.91 [2157]	104.50 [2654]	37802-72
STXHDQC-78XX60XXX	78.00 [1900-2100]	60.00 [1524]	90.91 [2309]	110.50 [2807]	37802-78
STXHDQC-78XX66XXX	78.00 [1900-2100]	66.00 [1676]	90.91 [2309]	110.50 [2807]	37802-78
STXHDQC-78XX72XXX	78.00 [1900-2100]	72.00 [1829]	90.91 [2309]	110.50 [2807]	37802-78

ASSEMBLY PART NO.	COLOR
STXHDQC-XXXXXX	ORANGE
STXHDQC-XXXXXXBRX	BROWN
STXHDQC-XXXXXXCLX	TAN
STXHDQC-XXXXXXGRX	GREEN
STXHDQC-XXXXXXNBX	NAVY BLUE
*STXHDQC-XXXXXXCYX	YELLOW W/BEADS

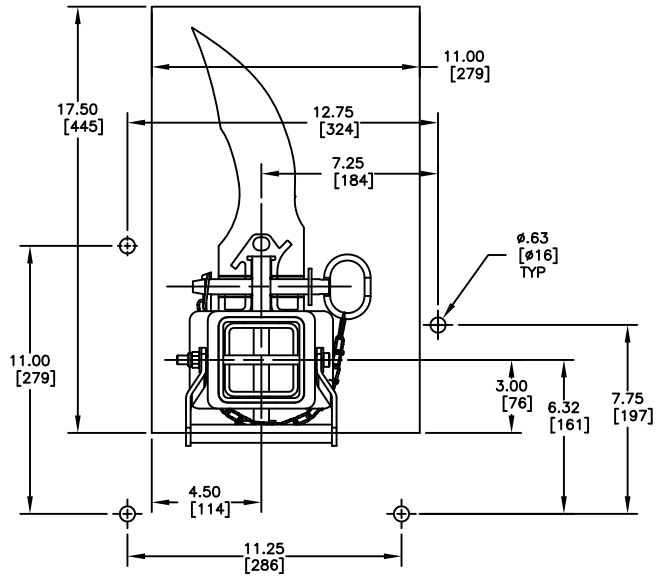
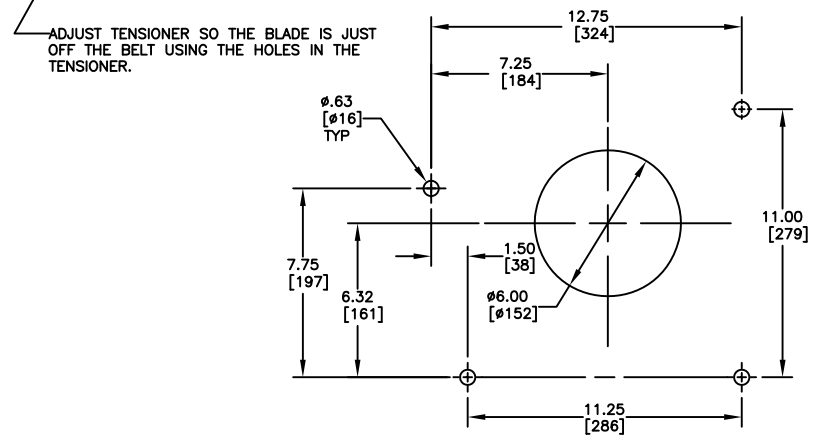
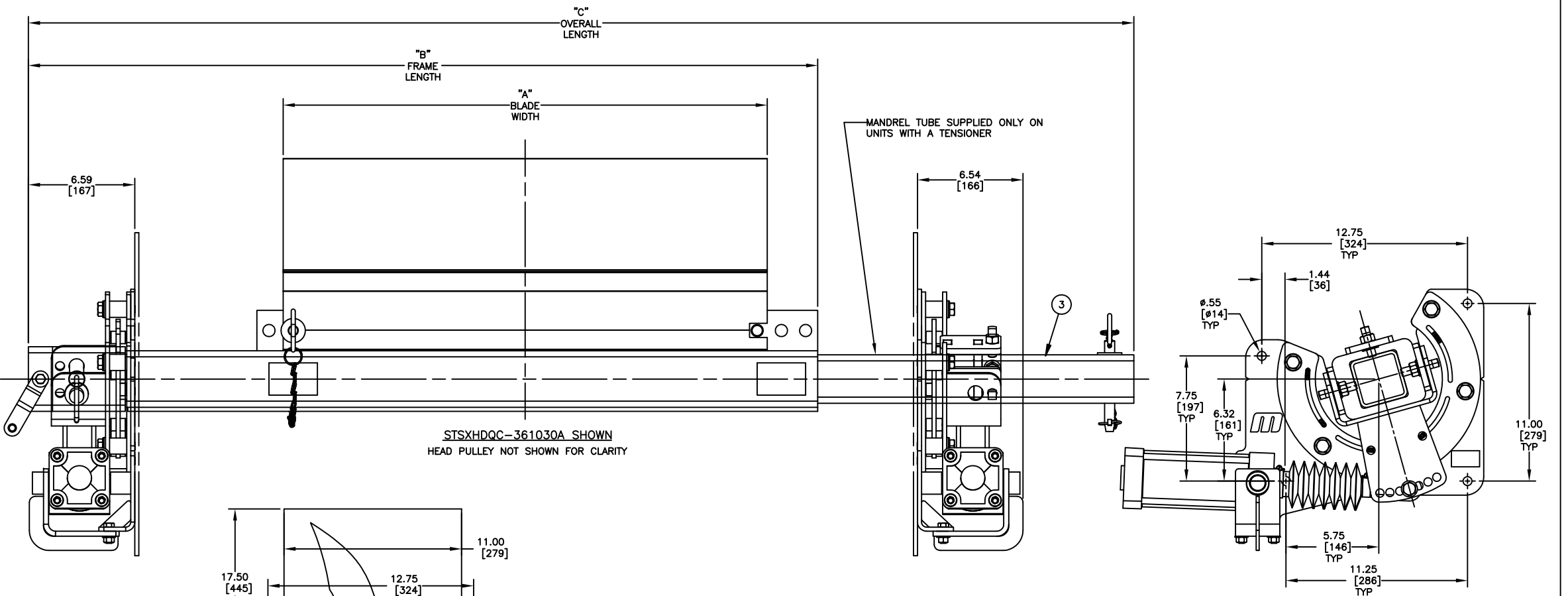
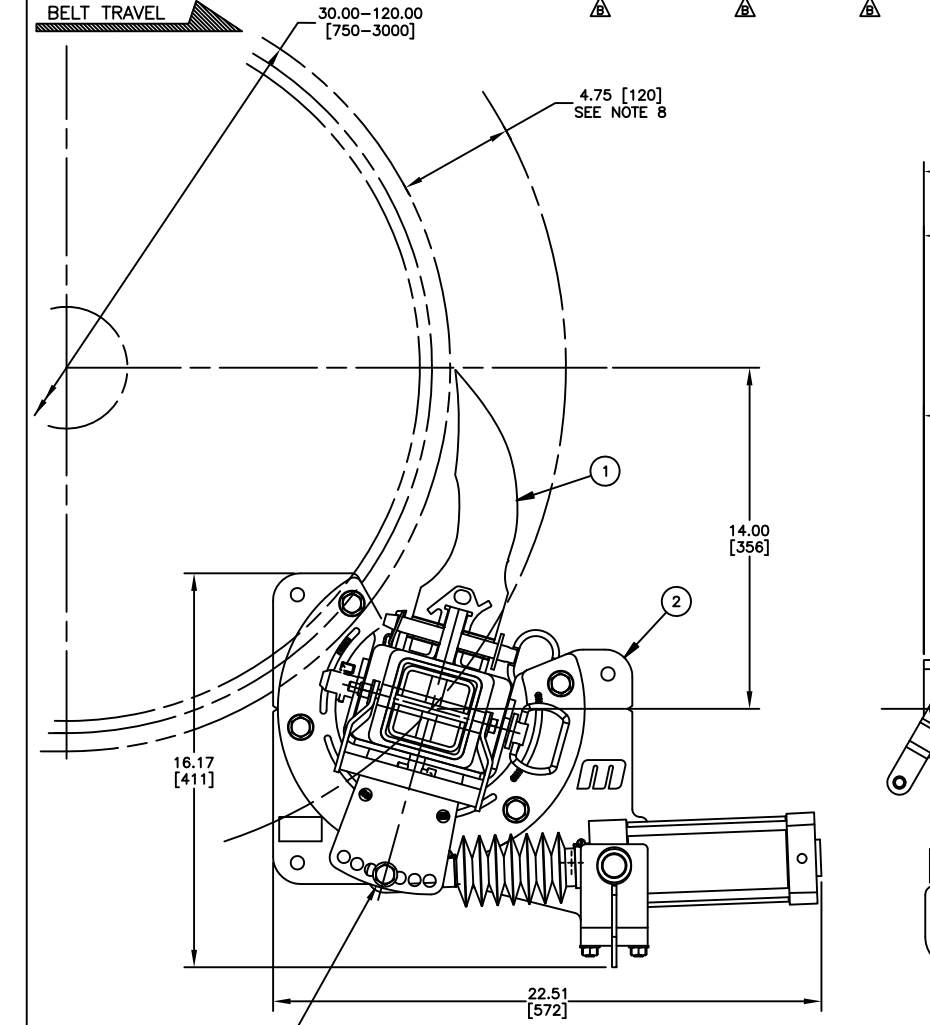
* = ONLY OFFERED IN SEGMENTED (10)



ITEM	QTY.	DESCRIPTION	PART NUMBER
1	1	MARTIN® STS XHD QC1™ MAINFRAME ASM	STXHDQC-XXXXXX
2	1	STS XHD AIR CYLINDER TENSIONER	39100-XHDASQ
3	1	STS XHD QC1™ MANDREL WELDMENT SS	SEE CHART
4	1	AIR CYLINDER PIPING/CONTROL KIT	32181

NS = NOT SHOWN

- NOTES:
- 1) ALL DIMENSIONS ARE GIVEN IN INCHES [MM] AND ARE FOR REFERENCE ONLY.
 - 2) IN THE STXHDQC-XXXXXX PART NUMBER THE FIRST "XX" INDICATES BELT WIDTH. THE NEXT TWO "XX" INDICATES BLADE TYPE SOLID (11) OR SEGMENTED (10). THE NEXT TWO "XX" INDICATES THE BLADE WIDTH. THE NEXT TWO "XX" INDICATES THE BLADE COLOR (SEE BLADE COLOR CHART). THE LAST "X" INDICATES IF A TENSIONER (A)/MANDREL TUBE ARE INCLUDED. EXAMPLES:
STXHDQC-361130A = 36" BELT WIDTH, 30" SOLID BLADE WITH AN AIR CYLINDER TENSIONER/MANDREL.
STXHDQC-361024 = 36" BELT WIDTH, 24" SEGMENTED BLADE WITHOUT AN AIR CYLINDER TENSIONER/MANDREL.
 - 3) THE PRE-CLEANER BLADE IS DESIGNED FOR HEAD PULLEY'S WITH A MINIMUM EFFECTIVE DIAMETER OF 16.00 [400]. SEE MOUNTING LOCATION CHART.
 - 4) CLEANER IS SHOWN IN RECOMMENDED WORKING POSITION.
 - 5) WHERE EXTREME OR UNUSUAL CONDITIONS EXIST OR SPECIAL MAINFRAME LENGTHS ARE REQUIRED CONTACT MARTIN ENGINEERING.
 - 6) AIR CYLINDER TENSIONER MAY BE BOLTED OR WELDED IN PLACE. MARTIN ENGINEERING RECOMMENDS BOLTING WHEN APPLICABLE FOR EASIER MAINTENANCE AND ACCESSIBILITY.
 - 7) REFER TO OPERATOR'S MANUAL M3987 FOR COMPLETE INSTALLATION INSTRUCTIONS.
 - 8) CLEANER CAN BE LOCATED ANYWHERE ALONG THE ARC, AS LONG AS THE MAINFRAME IS OUT OF MATERIAL TRAJECTORY AND THE BLADE TIPS ARE BELOW THE HORIZONTAL CENTERLINE OF THE HEAD PULLEY.
 - 9) THE XHD QC1 PRE-CLEANER BLADES ARE DESIGNED TO REMOVE HEAVY CARRYBACK ONLY. DO NOT OVERTENSION.
 - 10) BLADE COVERAGE IS LESS THAN BELT WIDTH, DUE TO POSSIBLE MISTRACKING OR DAMAGED EDGES OF THE BELT.



E	RWID BLACK (B1) & YELLOW (Y) COLOR OPTIONS FROM CHART / RWID SLOT OPTION FROM P/N NOTE / UPDATED PICTORIALY	16240	12/14/22	JMH	<p>MARTIN ENGINEERING-USA NEPONSET, IL USA</p>	TITLE	MARTIN® STS XHD QC1™ ASM WITH AIR CYLINDER TENS	DRAWN MJB DATE 01/06/16 CHECKED ENG. JAH DATE 01/06/16 APPROVED JAH DATE 01/06/16
D	ADDED P/N STXHDQC-78XXXXXX TO CHART (PR13954)	----	02/13/20	JMH		SALES DRAWING	AS50105-XHDA	SCALE 1/4
C	ADDED 18" LESS BELT WIDTH P/N'S TO THE S4 THRU 72 BELT WIDTH ASM'S	14903	06/28/17	RND		REVISION	SUPERSEDES DWG S50105-A DATED 09/29/15	
B	CHGD TO SQ MANDREL TUBE. UPDATED DIMS. CHGD P/N'S FROM 39100-A TO 39100-XHDASQ AND 39241-XX TO 37802-XX	14699	12/06/16	RND		PR13070		
A	CHGD DWG NUMBER FROM S50105-A TO S50105-XHDA	14436	01/06/16	MJB				

© Copyright 2013 Martin Engineering. All rights reserved. Covered by U.S. and foreign patents pending and issued. ® and ™ indicate trademarks of Martin Engineering.