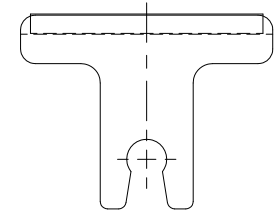


ITEM	QTY.	DESCRIPTION	PART NUMBER
1	1	DURT HAWG® HAWG BONE™ SECONDARY	SEE CHART
2	1	TWIST TENSIONER ASSEMBLY	38850

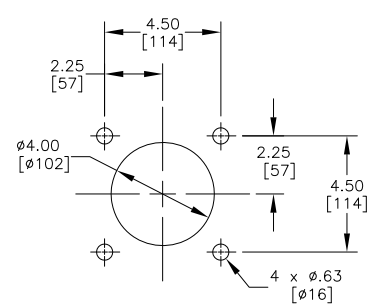
MAINFRAME ASM P/N	BELT WIDTH	DIMENSION "A" BLADE COVERAGE	DIMENSION "B" FRAME LENGTH	LONG ARM QUANTITY	SHORT ARM QUANTITY
37144-18XXX-X	18.00 [400-500]	12.50 [318]	40.00 [1016]	1	1
37144-24XXX-X	24.00 [500-650]	18.50 [470]	46.00 [1168]	1	2
37144-30XXX-X	30.00 [650-800]	24.50 [622]	58.00 [1473]	2	2
37144-36XXX-X	36.00 [800-1000]	30.50 [775]	64.00 [1626]	2	3
37144-42XXX-X	42.00 [1000-1200]	36.50 [927]	70.00 [1778]	3	3
37144-48XXX-X	48.00 [1200-1400]	42.50 [1080]	76.00 [1930]	3	4



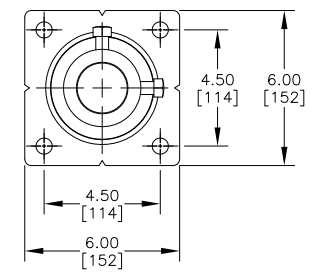
TUNGSTEN CARBIDE "T" BLADE DETAIL
PART NUMBER 34574
SCALE: 3/8

- △ NOTES:
- 1) ALL DIMENSIONS GIVEN IN INCHES (MM) AND ARE FOR REFERENCE ONLY.
 - 2) FOR P/N 37144-XXXXX-X, THE FIRST XX INDICATES BELT WIDTH. THE NEXT TWO XX'S INDICATE BLADE TYPE/MATERIAL. THE NEXT TWO XX'S INDICATE ARM COLOR. THE LAST X INDICATES TWIST TENSIONER (T) OR SPRING TENSIONER (S). LEFT BLANK FOR NO TENSIONER.
 - 3) WHERE EXTREME OR UNUSUAL CONDITIONS EXIST, OR SPECIAL MAINFRAME LENGTHS ARE REQUIRED, CONSULT MARTIN® ENGINEERING FOR ASSISTANCE.
 - 4) CLEANER SHOWN IN UNTENSIONED POSITION.
 - 5) TWIST TENSIONER ASSEMBLY MAY BE BOLTED OR WELDED IN PLACE. MARTIN® ENGINEERING RECOMMENDS BOLTING WHEN APPLICABLE FOR EASIER MAINTENANCE AND ACCESSIBILITY. IF WELDING IS REQUIRED USE TWIST TENSIONER ASSEMBLY P/N 38850-A.
 - 6) BLADE COVERAGE WILL BE 5.50 (140) LESS THAN BELT WIDTH, DUE TO POSSIBLE MISTRACKING OF BELT OR DAMAGED EDGES OF BELT. BLADES MUST BE CENTERED ON BELT SURFACE.
 - 7) REFER TO OPERATOR'S MANUALS (P/N:M3296, M3619) FOR INSTALLATION DETAILS.
 - 8) SEVERE APPLICATIONS MAY REQUIRE ADAPTER TO BE WELDED TO MAINFRAME.
 - 9) FRAME IS ADJUSTABLE TO DESIRED LENGTH.

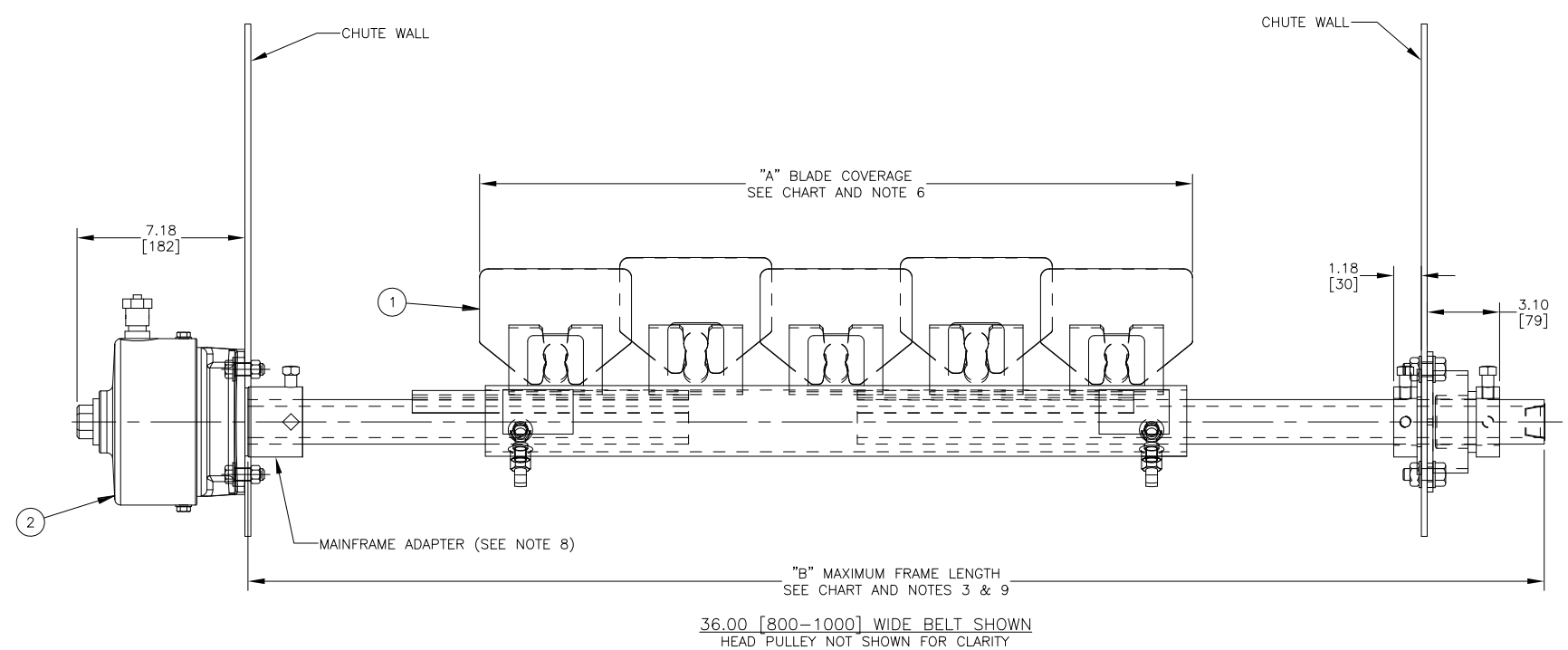
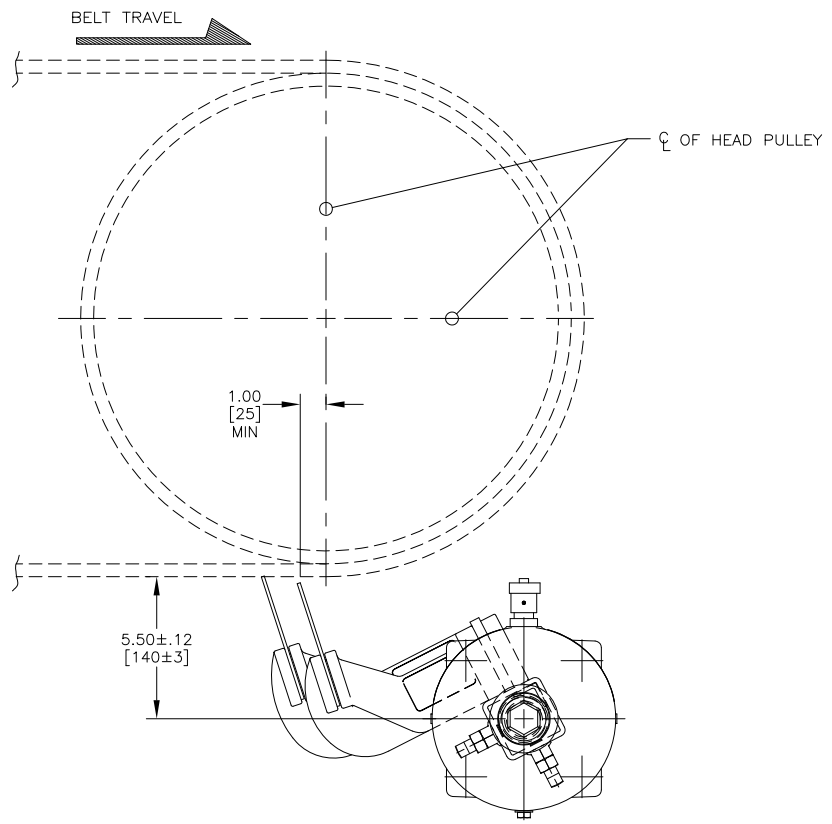
BLADE CHART				
ASSEMBLY P/N	SHORT ARM P/N	LONG ARM P/N	BLADE P/N	BLADE MATERIAL
37144-XXS-X	29033-S	29033-L	35380-01	BLADE 304 SS
37144-XXM-X	29033-S	29033-L	30339	BLADE MILD STEEL
37144-XXT-X	29033-S	29033-L	34574	T BLADE TUNGSTEN CARBIDE
37144-XXTBR-X	29033-SBR	29033-LBR	34574	T BLADE TUNGSTEN CARBIDE
37144-XXTGR-X	29033-SGR	29033-LGR	34574	T BLADE TUNGSTEN CARBIDE
37144-XXMT-X	29033-S	29033-L	35379	T BLADE MILD STEEL



TENSIONER CHUTE WALL CUTOUT DETAIL
TYPICAL BOTH SIDES



FARSIDE MOUNT DETAIL



© Copyright 2011 Martin Engineering. All rights reserved. Covered by U.S. and foreign patents pending and issued. ® and TM indicate trademarks of Martin Engineering.

MARTIN ENGINEERING NEPONSET ILLINOIS USA

TITLE: HAWG BONE® SECONDARY ASM WITH TWIST TENSIONER

DRAWN: JAH DATE: 04/06/11

CHECKED: [Signature] DATE: 04/06/11

APPROVED: [Signature] DATE: 04/06/11

SALES DRAWING: MD0825 S50092-S SCALE: 1/4

NO.	DESCRIPTION	ECN	DATE	BY
A	RMD P/N 37144-54XXX-X, -60XXX-X, -66XXX-X, -72XXX-X & -84XXX-X FROM CHART / RMD NOTE "FOR BELT WIDTHS 48.00 (1400-1600) AND ABOVE..."	16029	01/06/22	JAH
	REVISION			