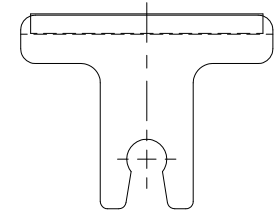


ITEM	QTY.	DESCRIPTION	PART NUMBER
1	1	DURT HAWG® HAWG BONE™ SECONDARY	SEE CHART
2	1	DUAL TWIST TENSIONER ASSEMBLY	38850-2

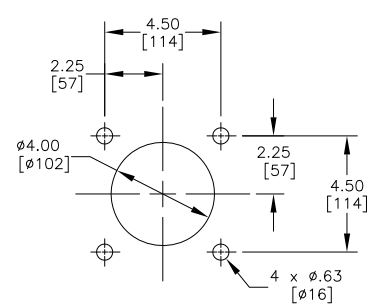
MAINFRAME ASM P/N	BELT WIDTH	DIMENSION "A" BLADE COVERAGE	DIMENSION "B" FRAME LENGTH	LONG ARM QUANTITY	SHORT ARM QUANTITY
37144-54XXX-X	54.00 [1400-1600]	48.50 [1232]	82.00 [2083]	4	4
37144-60XXX-X	60.00 [1600-1800]	54.50 [1384]	94.00 [2388]	4	5
37144-66XXX-X	66.00 [1600-1800]	60.50 [1537]	100.00 [2540]	5	5
37144-72XXX-X	72.00 [1800-2000]	66.50 [1689]	106.00 [2692]	5	6
37144-78XXX-X	78.00 [2000-2200]	72.50 [1842]	117.00 [2972]	6	6
37144-84XXX-X	84.00 [2000-2200]	78.50 [1994]	123.00 [3124]	6	7
37144-90XXX-X	90.00 [2200-2400]	84.50 [2146]	129.00 [3277]	7	7
37144-96XXX-X	96.00 [2200-2400]	90.50 [2299]	135.00 [3429]	7	8



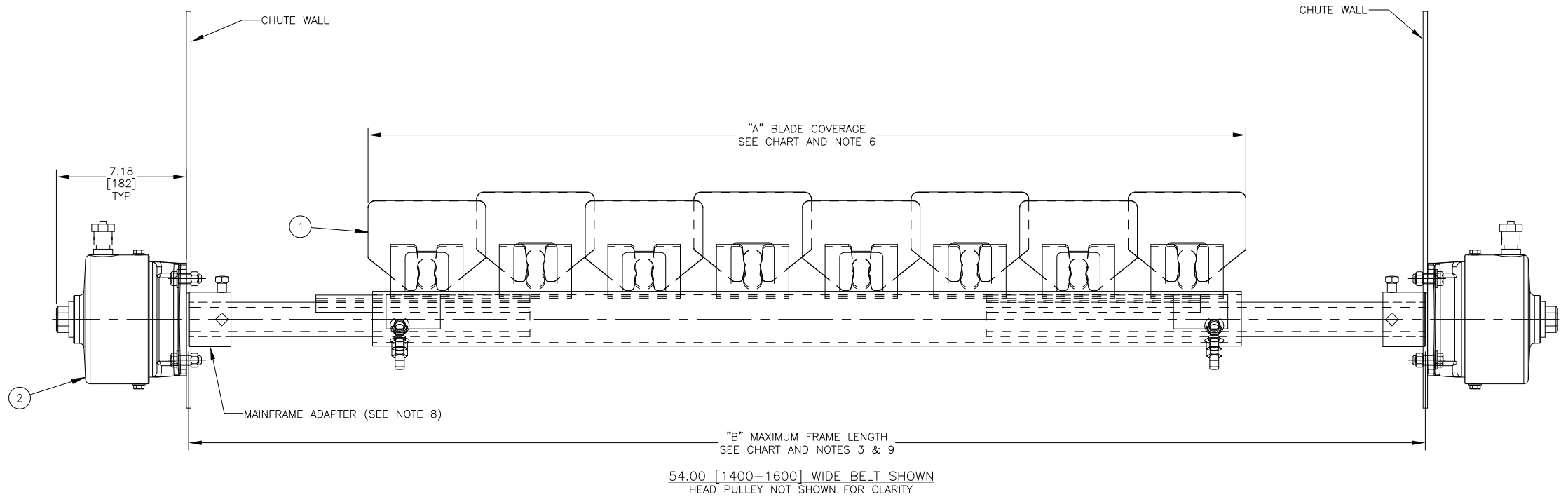
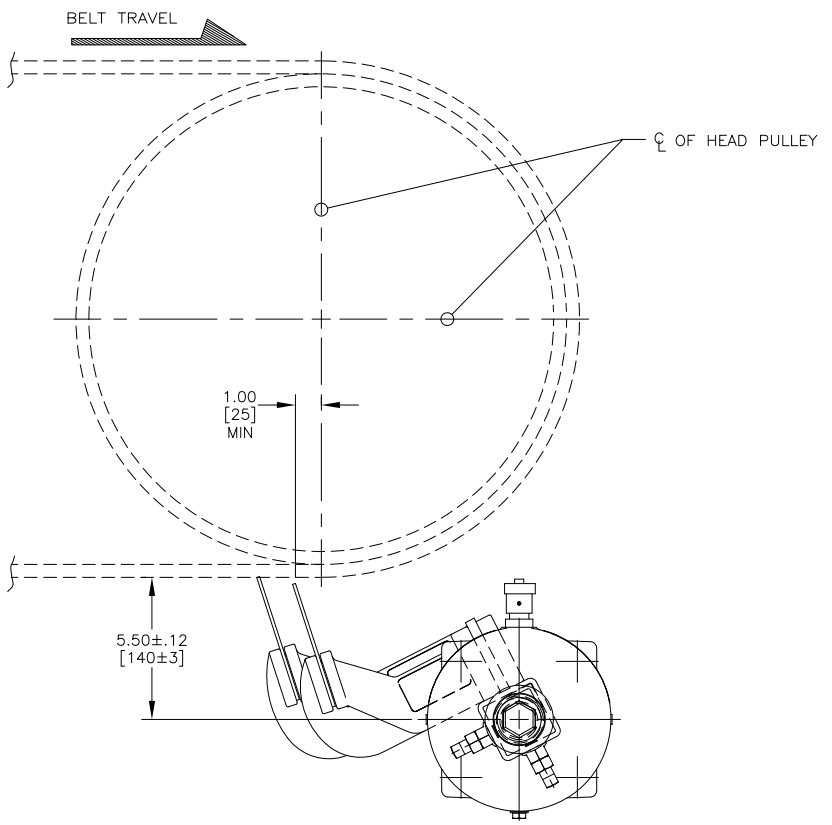
TUNGSTEN CARBIDE "T" BLADE DETAIL  
PART NUMBER 34574  
SCALE: 3/8

- NOTES:
- 1) ALL DIMENSIONS GIVEN IN INCHES (MM) AND ARE FOR REFERENCE ONLY.
  - 2) FOR P/N 37144-XXXXX-X, THE FIRST XX INDICATES BELT WIDTH. THE NEXT TWO XX'S INDICATE BLADE TYPE/MATERIAL. THE NEXT TWO XX'S INDICATE ARM COLOR. THE LAST X INDICATES TWIST TENSIONER (T) OR SPRING TENSIONER (S). LEFT BLANK FOR NO TENSIONER.
  - 3) WHERE EXTREME OR UNUSUAL CONDITIONS EXIST, OR SPECIAL MAINFRAME LENGTHS ARE REQUIRED. CONSULT MARTIN® ENGINEERING FOR ASSISTANCE.
  - 4) CLEANER SHOWN IN UNTENSIONED POSITION.
  - 5) TWIST TENSIONER ASSEMBLY MAY BE BOLTED OR WELDED IN PLACE. MARTIN® ENGINEERING RECOMMENDS BOLTING WHEN APPLICABLE FOR EASIER MAINTENANCE AND ACCESSIBILITY. IF WELDING IS REQUIRED USE TWIST TENSIONER ASSEMBLY P/N 38850-2A.
  - 6) BLADE COVERAGE WILL BE 5.50 (140) LESS THAN BELT WIDTH, DUE TO POSSIBLE MISTRACKING OF BELT OR DAMAGED EDGES OF BELT. BLADES MUST BE CENTERED ON BELT SURFACE.
  - 7) REFER TO OPERATOR'S MANUALS (P/N:M3296, M3619) FOR INSTALLATION DETAILS.
  - 8) SEVERE APPLICATIONS MAY REQUIRE ADAPTER TO BE WELDED TO MAINFRAME.
  - 9) FRAME IS ADJUSTABLE TO DESIRED LENGTH.

BLADE CHART				
ASSEMBLY P/N	SHORT ARM P/N	LONG ARM P/N	BLADE P/N	BLADE MATERIAL
37144-XXS-X	29033-S	29033-L	35380-01	BLADE 304 SS
37144-XXM-X	29033-S	29033-L	30339	BLADE MILD STEEL
37144-XTT-X	29033-S	29033-L	34574	T BLADE TUNGSTEN CARBIDE
37144-XTBR-X	29033-SBR	29033-LBR	34574	T BLADE TUNGSTEN CARBIDE
37144-XTGR-X	29033-SGR	29033-LGR	34574	T BLADE TUNGSTEN CARBIDE
37144-XXMT-X	29033-S	29033-L	35379	T BLADE MILD STEEL



TENSIONER CHUTE WALL CUTOUT DETAIL  
TYPICAL BOTH SIDES



© Copyright 2011 Martin Engineering. All rights reserved. Covered by U.S. and foreign patents pending and issued. ® and TM indicate trademarks of Martin Engineering.

**MARTIN ENGINEERING** NEPONSET ILLINOIS USA

TITLE: HAWG BONE® SECONDARY ASM WITH DUAL TWIST TENSIONER

DRAWN: JAH DATE: 04/06/11

CHECKED: [Signature] DATE: 04/06/11

APPROVED: [Signature] DATE: 04/06/11

SCALE: 1/4

NO.	DESCRIPTION	ECN	DATE	BY
A	RMVD P/N 37144-18XXX-X, -24XXX-X, -30XXX-X, -36XXX-X, -42XXX-X & -48XXX-X FROM CHART / ADDED P/N 37144-78XXX-X, -90XXX-X & -96XXX-X TO CHART / RMVD NOTE FOR BELT WIDTHS 48.00 (1200-1600) AND UNDER...	16029	01/06/22	JAH
	REVISION			