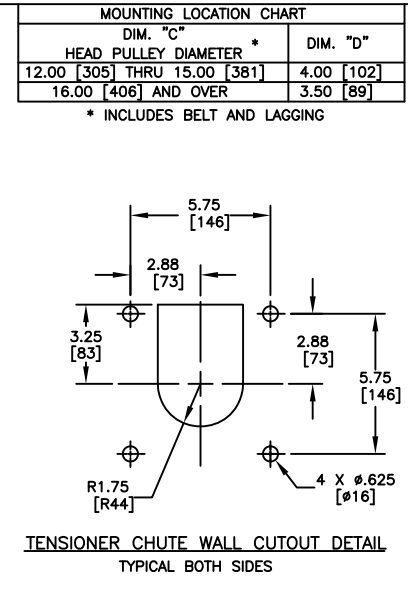
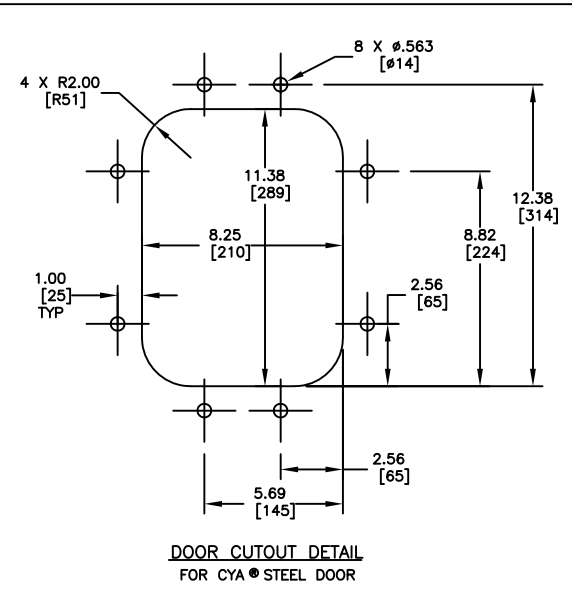


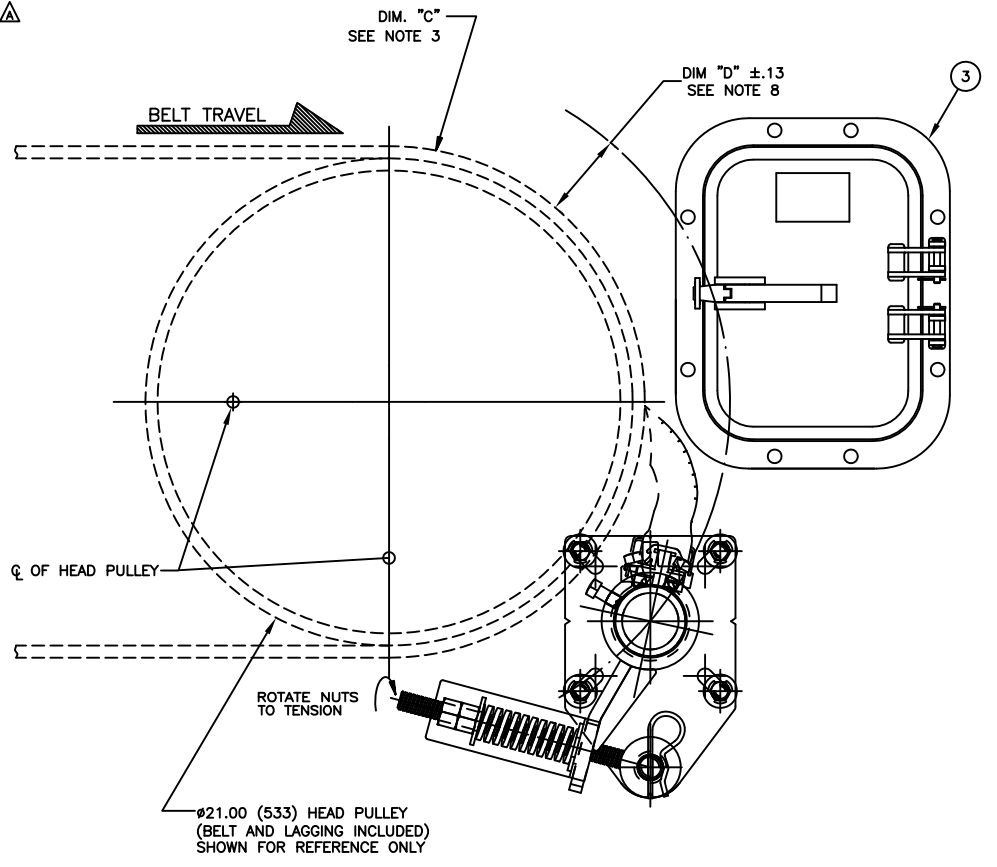
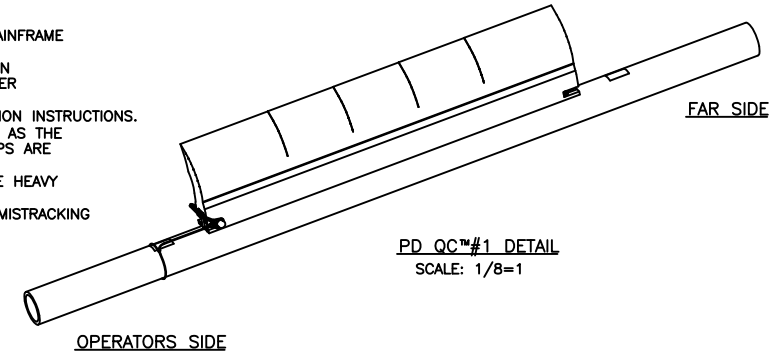
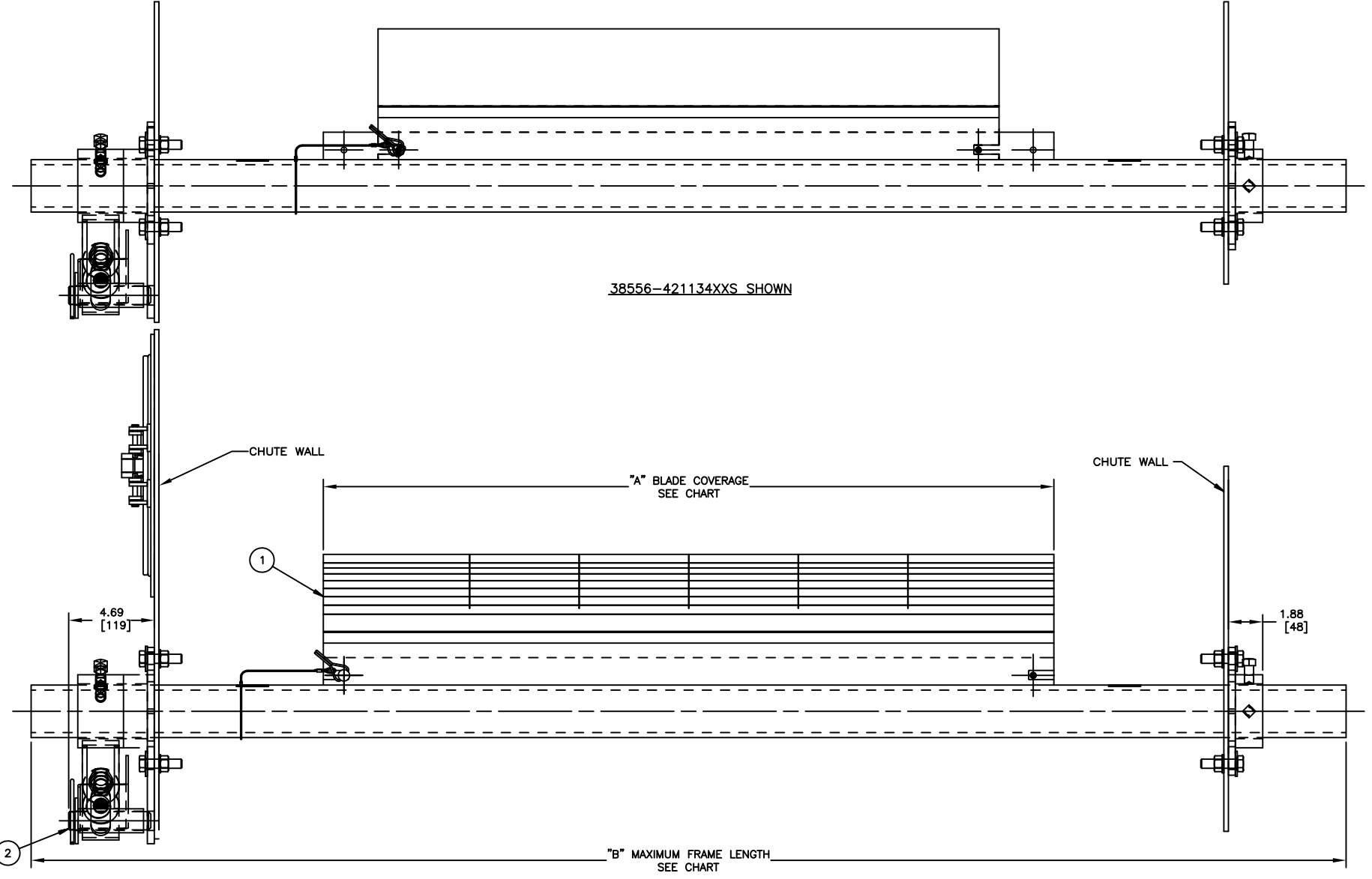
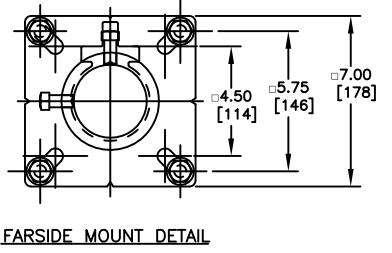
PART NUMBER	BELT WIDTH	DIMENSION "A" BLADE COVERAGE	DIMENSION "B" FRAME LENGTH	PART NO. ITEM 2
38556-181X10XX	18.00 [400-500]	10.00 [254]	48.00 [1219]	38555-1
38556-181X12XX	18.00 [400-500]	12.00 [305]	48.00 [1219]	38555-1
38556-181X16XX	18.00 [400-500]	16.00 [406]	48.00 [1219]	38555-1
38556-241X16XX	24.00 [500-650]	16.00 [406]	54.00 [1372]	38555-1
38556-241X18XX	24.00 [500-650]	18.00 [457]	54.00 [1372]	38555-1
38556-241X22XX	24.00 [500-650]	22.00 [559]	54.00 [1372]	38555-1
38556-301X22XX	30.00 [650-800]	22.00 [559]	60.00 [1524]	38555-1
38556-301X24XX	30.00 [650-800]	24.00 [610]	60.00 [1524]	38555-1
38556-301X28XX	30.00 [650-800]	28.00 [711]	60.00 [1524]	38555-1
38556-361X28XX	36.00 [800-1000]	28.00 [711]	66.00 [1676]	38555-1
38556-361X30XX	36.00 [800-1000]	30.00 [762]	66.00 [1676]	38555-1
38556-361X34XX	36.00 [800-1000]	34.00 [864]	66.00 [1676]	38555-1
38556-421X34XX	42.00 [1000-1200]	34.00 [864]	72.00 [1829]	38555-1
38556-421X36XX	42.00 [1000-1200]	36.00 [914]	72.00 [1829]	38555-1
38556-421X40XX	42.00 [1000-1200]	40.00 [1016]	72.00 [1829]	38555-1
38556-481X40XX	48.00 [1200-1400]	40.00 [1016]	78.00 [1981]	38555-1
38556-481X42XX	48.00 [1200-1400]	42.00 [1067]	78.00 [1981]	38555-1
38556-481X46XX	48.00 [1200-1400]	46.00 [1168]	78.00 [1981]	38555-1
38556-541X46XX	54.00 [1400-1600]	46.00 [1168]	84.00 [2134]	38555-2
38556-541X48XX	54.00 [1400-1600]	48.00 [1219]	84.00 [2134]	38555-2
38556-541X52XX	54.00 [1400-1600]	52.00 [1321]	84.00 [2134]	38555-2
38556-601X52XX	60.00 [1600-1800]	52.00 [1321]	90.00 [2286]	38555-2
38556-601X54XX	60.00 [1600-1800]	54.00 [1372]	90.00 [2286]	38555-2
38556-601X58XX	60.00 [1600-1800]	58.00 [1473]	90.00 [2286]	38555-2
38556-661X58XX	66.00 [1600-1800]	58.00 [1473]	96.00 [2438]	38555-2
38556-661X60XX	66.00 [1600-1800]	60.00 [1524]	96.00 [2438]	38555-2
38556-661X64XX	66.00 [1600-1800]	64.00 [1626]	96.00 [2438]	38555-2
38556-721X64XX	72.00 [1800-2000]	64.00 [1626]	102.00 [2591]	38555-2
38556-721X66XX	72.00 [1800-2000]	66.00 [1676]	102.00 [2591]	38555-2
38556-721X70XX	72.00 [1800-2000]	70.00 [1778]	102.00 [2591]	38555-2
38556-781X70XX	78.00 [1800-2000]	70.00 [1778]	108.00 [2743]	38555-2
38556-781X72XX	78.00 [1800-2000]	72.00 [1829]	108.00 [2743]	38555-2
38556-781X76XX	78.00 [1800-2000]	76.00 [1930]	108.00 [2743]	38555-2
38556-841X76XX	84.00 [2000-2200]	76.00 [1930]	114.00 [2896]	38555-2
38556-841X78XX	84.00 [2000-2200]	78.00 [1981]	114.00 [2896]	38555-2
38556-841X82XX	84.00 [2000-2200]	82.00 [2083]	114.00 [2896]	38555-2

ASSEMBLY PART NO.	COLOR
38556-XX1XXXX	ORANGE
38556-XX1XXBRX	BROWN
38556-XX1XXCLX	TAN
38556-XX1XXGRX	GREEN
38556-XX1XXNBX	NAVY BLUE



- NOTES:
- ALL DIMENSIONS ARE GIVEN IN INCHES [MM] AND ARE FOR REFERENCE ONLY.
 - IN THE 38556-XX1XXXXX PART NUMBER THE FIRST TWO XX'S INDICATE BELT WIDTH. THE 1X INDICATES BLADE TYPE:
10 = BLADE WITH SEGMENTS OR 11 = BLADE WITHOUT SEGMENTS
THE NEXT TWO XX'S INDICATE BLADE COVERAGE.
THE NEXT TWO XX'S INDICATE TENSIONER COLOR (SEE CHART).
THE LAST X INDICATES IF A TENSIONER IS INCLUDED.
EXAMPLES:
38556-361134BRS = 36" BELT WIDTH, 34" BROWN BLADE WITHOUT SEGMENTS, WITH A SPRING TENSIONER.
38556-361028 = 36" BELT WIDTH, 28" ORANGE BLADE WITH SEGMENTS.
38556-361128GRS = 36" BELT WIDTH, 28" GREEN BLADE WITHOUT SEGMENTS, WITH A SPRING TENSIONER.
 - THE PRE-CLEANER BLADE IS DESIGNED FOR HEAD PULLEY'S WITH A MINIMUM EFFECTIVE DIAMETER OF 12.00 [305].
 - CLEANER IS SHOWN IN RECOMMENDED WORKING POSITION.
 - WHERE EXTREME OR UNUSUAL CONDITIONS EXIST, OR SPECIAL MAINFRAME LENGTHS ARE REQUIRED CONTACT MARIN ENGINEERING.
 - SPRING TENSIONER MAY BE BOLTED OR WELDED IN PLACE. MARTIN ENGINEERING RECOMMENDS BOLTING WHEN APPLICABLE FOR EASIER MAINTENANCE AND ACCESSIBILITY.
 - REFER TO OPERATOR'S MANUAL M3798 FOR COMPLETE INSTALLATION INSTRUCTIONS.
 - CLEANER CAN BE LOCATED ANYWHERE ALONG THE ARC, AS LONG AS THE MAINFRAME IS OUT OF MATERIAL TRAJECTORY AND THE BLADE TIPS ARE BELOW THE HORIZONTAL CENTERLINE OF THE HEAD PULLEY.
 - THE PD QC #1 PRE-CLEANER BLADES ARE DESIGNED TO REMOVE HEAVY CARRYBACK ONLY. DO NOT OVERTENSION.
 - BLADE COVERAGE IS LESS THAN BELT WIDTH, DUE TO POSSIBLE MISTRACKING OR DAMAGED EDGES OF THE BELT.

ITEM	QTY.	DESCRIPTION	PART NUMBER
1	1	MARTIN® PD QC™#1 BLADE MAINFRAME ASM	38556-XX1XXXXX
2	1	SPRING TENSIONER ASM	SEE CHART
3	1	MARTIN® LOW PROFILE STL DOOR 9X12	CYA-0912



© Copyright 2009 Martin Engineering. All rights reserved. Covered by U.S. and foreign patents pending and issued. ® and TM indicate trademarks of Martin Engineering.

MARTIN ENGINEERING NEPONSET ILLINOIS USA

TITLE	MARTIN® PERFORMANCE DUTY QC™#1 ASM WITH SPRING TENSIONER ASM 9 X 12 STEEL DOOR	DRAWN RND	DATE 08/13/09
NO.	DESCRIPTION	ECN	DATE
1	CHGD P/N 38556-XXXXXXX TO 38556-XX1XXXXX IN BOM, CHARTS & P/N NOTE / RMVD WITH SLITS (0) OPTION FROM P/N NOTE	158638	03/25/21 JAH
SALES DRAWING	PR11517	S50068-SP	SCALE 1/4=1