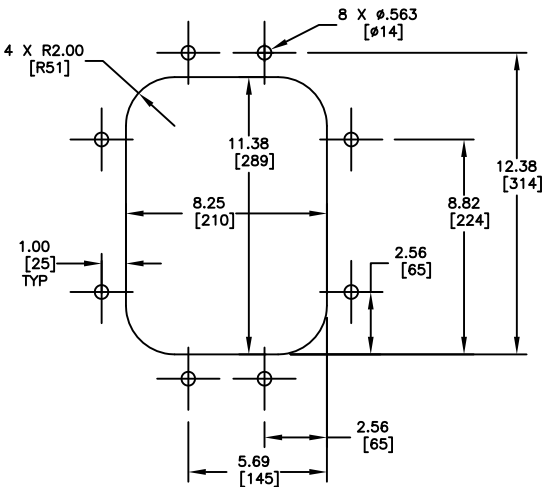


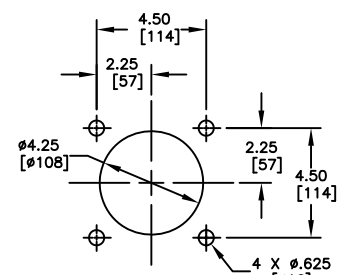
PART NUMBER	BELT WIDTH	DIMENSION "A" BLADE COVERAGE	DIMENSION "B" FRAME LENGTH
38556-181X10XXX	18.00 [400-500]	10.00 [254]	48.00 [1219]
38556-181X12XXX	18.00 [400-500]	12.00 [305]	48.00 [1219]
38556-181X16XXX	18.00 [400-500]	16.00 [406]	48.00 [1219]
38556-241X16XXX	24.00 [500-650]	16.00 [406]	54.00 [1372]
38556-241X18XXX	24.00 [500-650]	18.00 [457]	54.00 [1372]
38556-241X22XXX	24.00 [500-650]	22.00 [559]	54.00 [1372]
38556-301X22XXX	30.00 [650-800]	22.00 [559]	60.00 [1524]
38556-301X24XXX	30.00 [650-800]	24.00 [610]	60.00 [1524]
38556-301X28XXX	30.00 [650-800]	28.00 [711]	60.00 [1524]
38556-361X28XXX	36.00 [800-1000]	28.00 [711]	66.00 [1676]
38556-361X30XXX	36.00 [800-1000]	30.00 [762]	66.00 [1676]
38556-361X34XXX	36.00 [800-1000]	34.00 [864]	66.00 [1676]
38556-421X34XXX	42.00 [1000-1200]	34.00 [864]	72.00 [1829]
38556-421X36XXX	42.00 [1000-1200]	36.00 [914]	72.00 [1829]
38556-421X40XXX	42.00 [1000-1200]	40.00 [1016]	72.00 [1829]
38556-481X40XXX	48.00 [1200-1400]	40.00 [1016]	78.00 [1981]
38556-481X42XXX	48.00 [1200-1400]	42.00 [1067]	78.00 [1981]
38556-481X46XXX	48.00 [1200-1400]	46.00 [1168]	78.00 [1981]

MOUNTING LOCATION CHART	
DIM. "C"	DIM. "D"
HEAD PULLEY DIAMETER *	
12.00 [305] THRU 15.00 [381]	4.00 [102]
16.00 [406] AND OVER	3.50 [89]

* INCLUDES BELT AND LAGGING



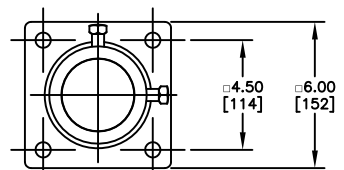
DOOR CUTOOUT DETAIL FOR CYA STEEL DOOR



TENSIONER CHUTE WALL CUTOOUT DETAIL TYPICAL BOTH SIDES

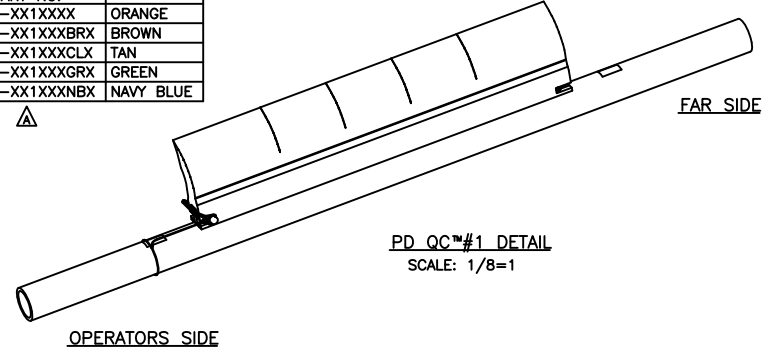
ITEM	QTY.	DESCRIPTION	PART NUMBER
1	1	MARTIN® PD QC™ #1 BLADE MAINFRAME ASM	38556-XX1XXXXXX
2	1	MARTIN® TWIST™ TENSIONER ASM	38554
3	1	MARTIN® LOW PROFILE STL DOOR 9X12	CYA-0912

- NOTES:
- ALL DIMENSIONS ARE GIVEN IN INCHES [MM] AND ARE FOR REFERENCE ONLY.
 - IN THE 38556-XX1XXXXXX PART NUMBER THE FIRST TWO XX'S INDICATE BELT WIDTH. THE 1X INDICATES BLADE TYPE:
 10 = BLADE WITH SEGMENTS OR 11 = BLADE WITHOUT SEGMENTS
 THE NEXT TWO XX'S INDICATE BLADE COVERAGE.
 THE NEXT TWO XX'S INDICATE BLADE COLOR (SEE CHART).
 THE LAST X INDICATES IF A TENSIONER IS INCLUDED.
 EXAMPLES:
 38556-361134BRT = 36" BELT WIDTH, 34" BROWN BLADE WITHOUT SEGMENTS, WITH A TWIST TENSIONER.
 38556-361028 = 36" BELT WIDTH, 28" ORANGE BLADE WITH SEGMENTS.
 38556-361128GRT = 36" BELT WIDTH, 28" GREEN BLADE WITHOUT SEGMENTS, WITH A TWIST TENSIONER.
 - CUT MAINFRAME TO LENGTH. WITH BLADE CENTERED ON THE BELT MEASURE HOW FAR THE MAINFRAME IS OUTSIDE THE CHUTE WALL AND ADD 1.63 [41] MINIMUM TO CUT OFF.
 - THE PRE-CLEANER BLADE IS DESIGNED FOR HEAD PULLEY'S WITH A MINIMUM EFFECTIVE DIAMETER OF 12.00 [305].
 - CLEANER IS SHOWN IN RECOMMENDED WORKING POSITION.
 - WHERE EXTREME OR UNUSUAL CONDITIONS EXIST, OR SPECIAL MAINFRAME LENGTHS ARE REQUIRED CONTACT MARTIN ENGINEERING.
 - TWIST TENSIONER MAY BE BOLTED OR WELDED IN PLACE. MARTIN ENGINEERING RECOMMENDS BOLTING WHEN APPLICABLE FOR EASIER MAINTENANCE AND ACCESSIBILITY.
 - REFER TO OPERATOR'S MANUAL M3798 FOR COMPLETE INSTALLATION INSTRUCTIONS.
 - FOR BELT WIDTHS 54.00 [1400-1600] AND LARGER, MARTIN ENGINEERING RECOMMENDS USING A DUAL TWIST TENSIONER (P/N 38554-2). SEE S50068-D.
 - CLEANER CAN BE LOCATED ANYWHERE ALONG THE ARC, AS LONG AS THE MAINFRAME IS OUT OF MATERIAL TRAJECTORY AND THE BLADE TIPS ARE BELOW THE HORIZONTAL CENTERLINE OF THE HEAD PULLEY.
 - THE PD QC #1 PRE-CLEANER BLADES ARE DESIGNED TO REMOVE HEAVY CARRYBACK ONLY. DO NOT OVERTENSION.
 - FOR SEVERE APPLICATIONS WELD THE MAINFRAME ADAPTER DIRECTLY TO MAINFRAME.
 - BLADE COVERAGE IS LESS THAN BELT WIDTH, DUE TO POSSIBLE MISTRACKING OR DAMAGED EDGES OF THE BELT.

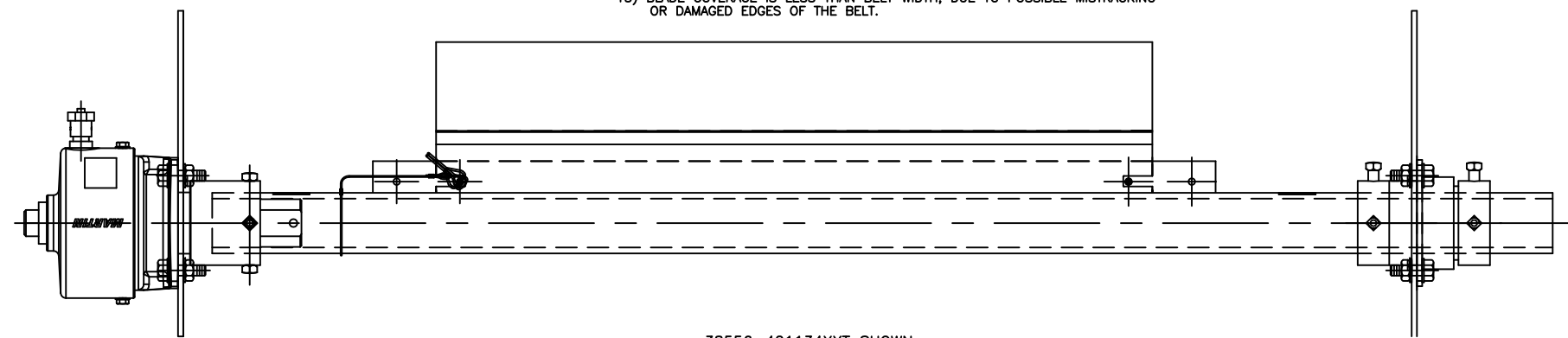


FARSIDE MOUNT DETAIL

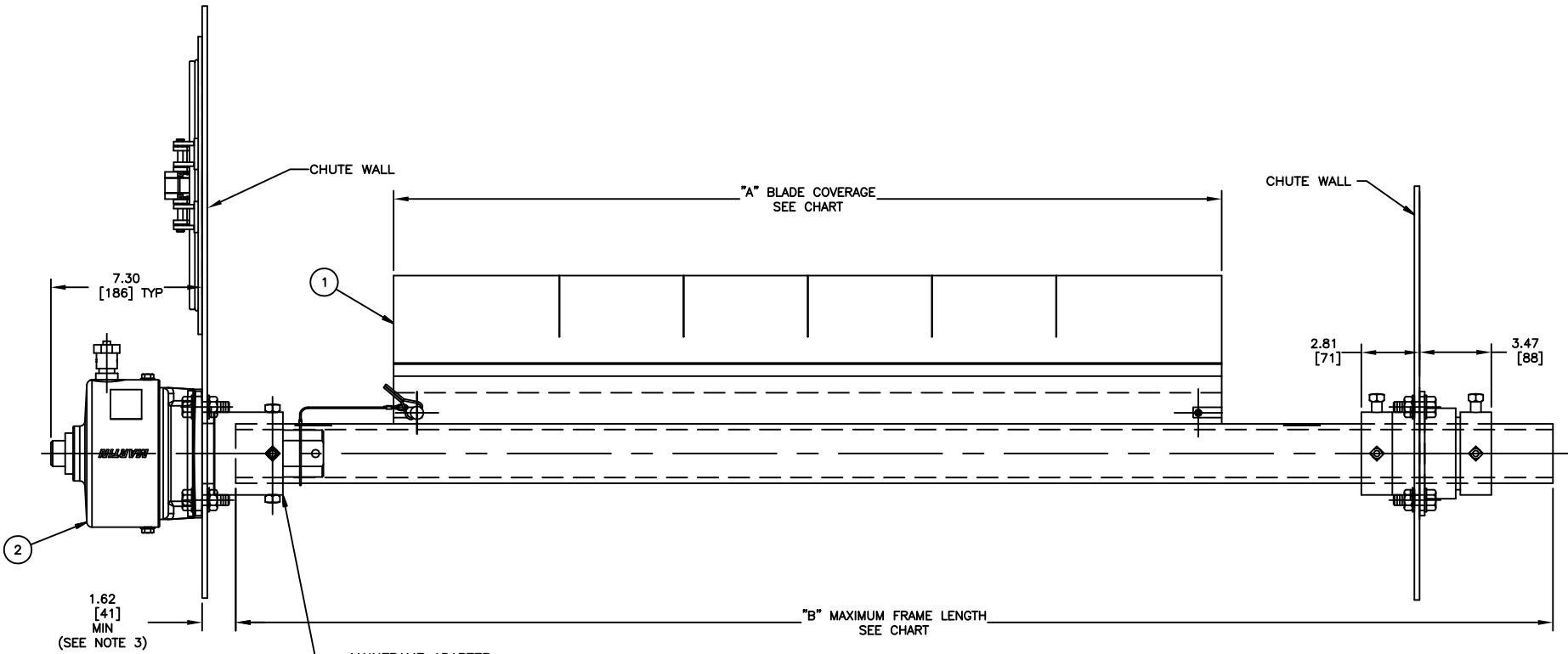
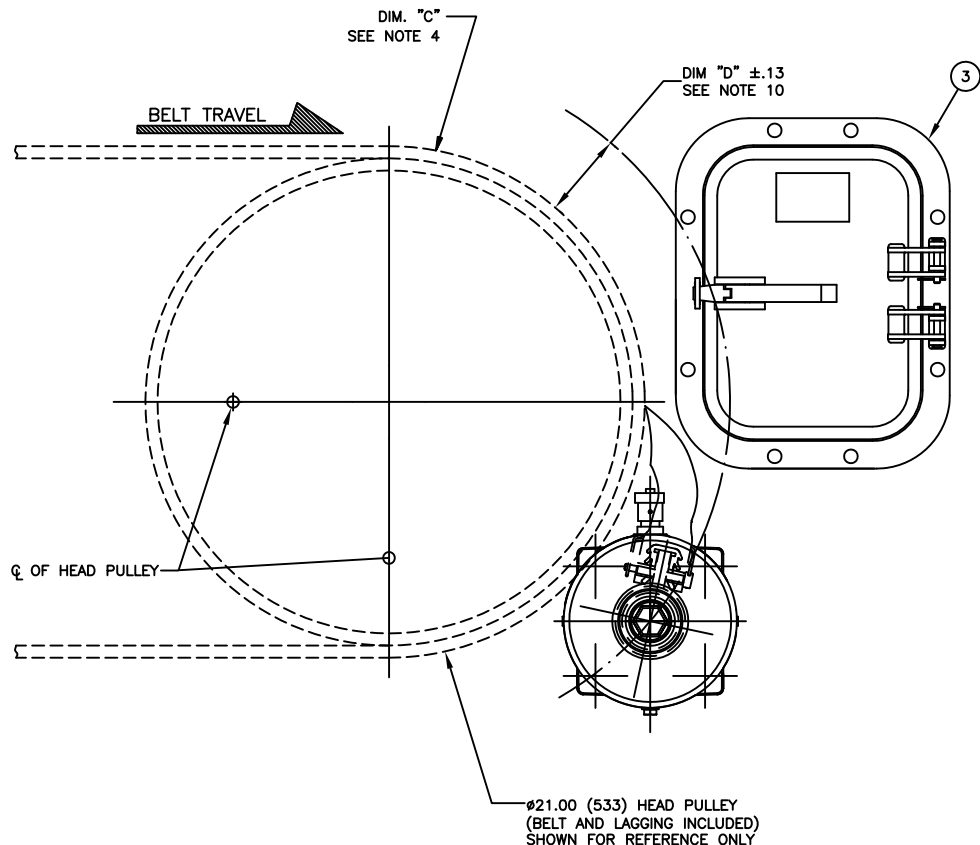
ASSEMBLY PART NO.	COLOR
38556-XX1XXXX	ORANGE
38556-XX1XXBRX	BROWN
38556-XX1XXCLX	TAN
38556-XX1XXGRX	GREEN
38556-XX1XXNBX	NAVY BLUE



PD QC™ #1 DETAIL SCALE: 1/8=1



38556-421134XXT SHOWN



38556-421040XXT SHOWN HEAD PULLEY NOT SHOWN FOR CLARITY

© Copyright 2012 Martin Engineering. All rights reserved. Covered by U.S. and foreign patents pending and issued. ® and TM indicate trademarks of Martin Engineering.



MARTIN ENGINEERING-USA
NEPONSET, IL USA

TITLE	DATE	BY	REVISION
MARTIN® PERFORMANCE DUTY QC™ #1 ASM WITH TWIST™ TENSIONER ASM 9 X 12 STEEL DOOR	08/13/09	JAH	
SALES DRAWING			
PR11517			

NO.	DESCRIPTION	ECN	DATE	BY
A	CHGD P/N 38556-XXXXXXX TO 38556-XX1XXXXXX IN BOM, CHARTS & P/N NOTE / RMVD WITH SLITS (Ø) OPTION FROM P/N NOTE	15863B	03/25/21	JAH
	REVISION			

DRWN	CHKD	APPD	SCALE
RND			1/4=1
DATE	08/13/09		
ENG.	JAH		
DATE	08/19/09		
APPROVED	JAH		
DATE	08/19/09		