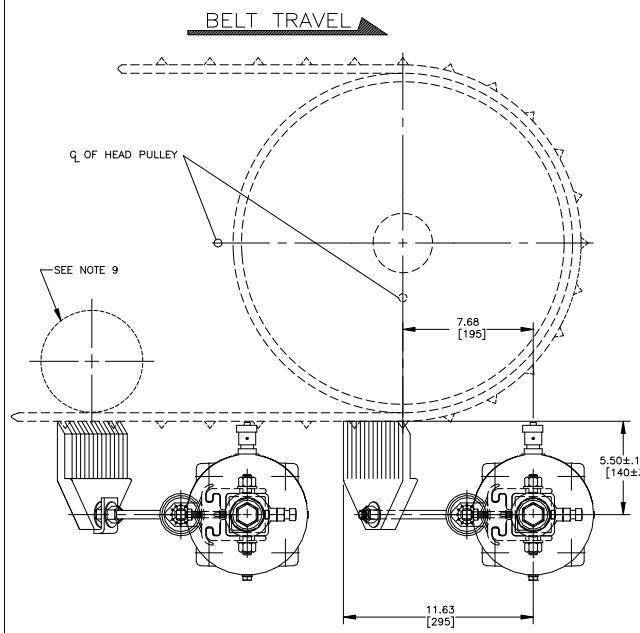


ASSEMBLY P/N	BELT WIDTH	DIM "A" SLEEVE LG	DIM "b" BLADE WIDTH	DIM "c" MAX FRAME LG	BLADE QTY	TENSIONER PART NO.
36881-18XXXX	18.00 [457]	15.00 [381]	12.50 [318]	43.00 [1092]	2	38850
36881-24XXXX	24.00 [610]	21.00 [533]	18.50 [470]	49.00 [1245]	3	38850
36881-30XXXX	30.00 [762]	27.00 [686]	24.50 [623]	61.00 [1549]	4	38850
36881-36XXXX	36.00 [914]	33.00 [838]	30.50 [775]	67.00 [1702]	5	38850
36881-42XXXX	42.00 [1067]	39.00 [991]	36.50 [927]	73.00 [1854]	6	38850
36881-48XXXX	48.00 [1219]	45.00 [1143]	42.50 [1080]	79.00 [2007]	7	38850
36881-54XXXX	54.00 [1372]	51.00 [1295]	48.50 [1232]	85.00 [2159]	8	38850-2
36881-60XXXX	60.00 [1524]	57.00 [1448]	54.50 [1385]	97.00 [2464]	9	38850-2
36881-72XXXX	72.00 [1829]	69.00 [1753]	66.50 [1689]	109.00 [2769]	11	38850-2
36881-78XXXX	78.00 [1981]	75.00 [1905]	72.50 [1842]	117.00 [2972]	12	38850-2
36881-84XXXX	84.00 [2134]	81.00 [2057]	78.50 [1994]	123.00 [3124]	13	38850-2
36881-96XXXX	96.00 [2438]	93.00 [2362]	90.50 [2299]	135.00 [3429]	15	38850-2

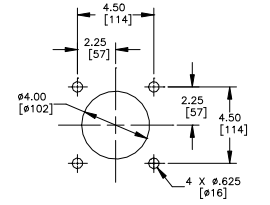
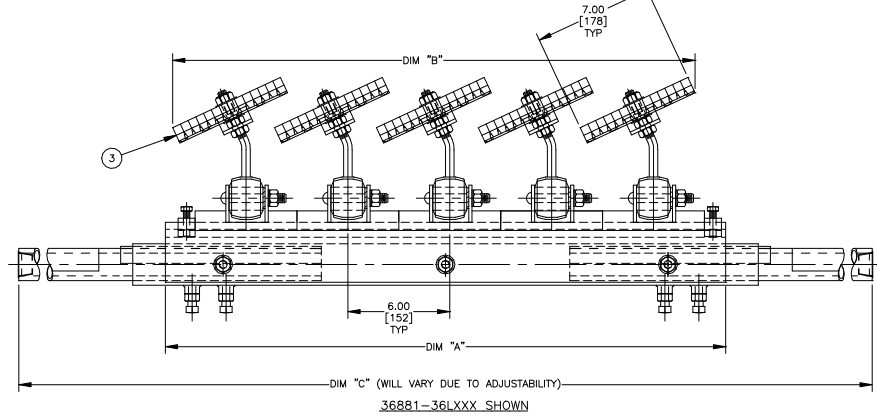
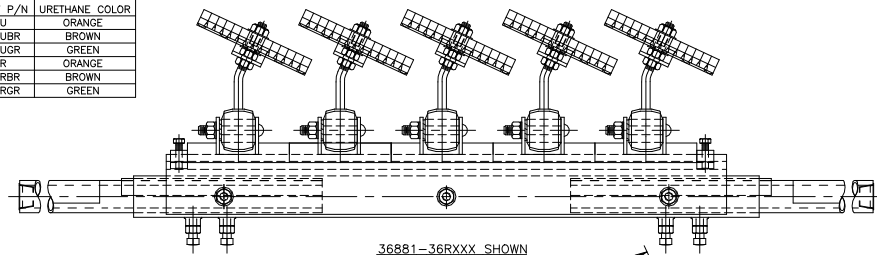
ASSEMBLY P/N		BLADE MATERIAL	CHEVRON BLADE P/N	TORSION ARM ASSEMBLY P/N	TORSION BASE URETHANE COLOR
36881-XXXX	URETHANE	32262	32270-XU	ORANGE	
36881-XXUUBR	URETHANE	32262	32270-XUBR	BROWN	
36881-XXUUGR	URETHANE	32262	32270-XUGR	GREEN	
36881-XXRR	RUBBER	32757	32270-XR	ORANGE	
36881-XXRRBR	RUBBER	32757	32270-XRBR	BROWN	
36881-XXRRGR	RUBBER	32757	32270-XRGR	GREEN	

ITEM	QTY.	DESCRIPTION	PART NUMBER
1	1	CHEVRON BELT CLEANER	36881-XXXXXX
2	1	TWIST TENSIONER	SEE CHART
3	SEE CHART	CHEVRON BLADE	SEE BLADE CHART

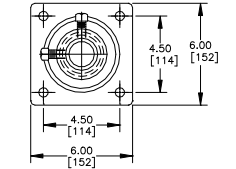
△ ** = TENSIONER IS NOT INCLUDED WITH ASSEMBLY AND NEEDS TO BE ORDER SEPARATELY.



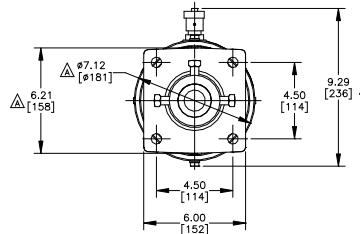
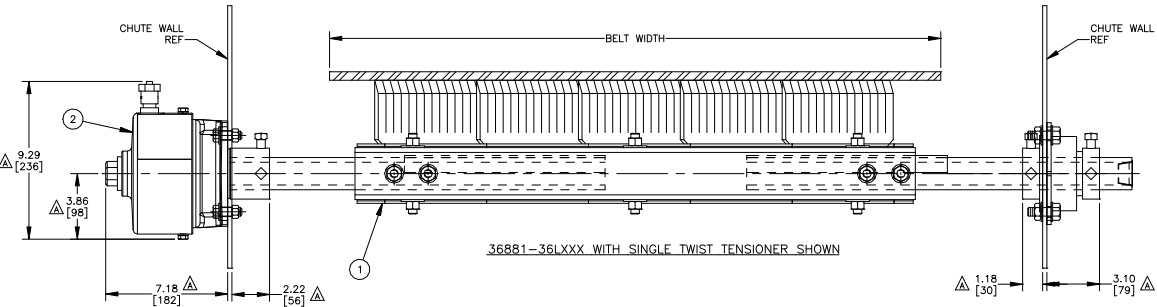
- NOTES:
- ALL DIMENSIONS ARE GIVEN IN INCHES [MM].
 - ALL DIMENSIONS ARE FOR REFERENCE ONLY.
 - THE FIRST XX INDICATES BELT WIDTH, THE THIRD X INDICATES LEFT OR RIGHT ARM WELDMENT AND THE FOURTH X INDICATES BLADE TYPE. THE LAST TWO XX INDICATE URETHANE TORSION BASE COLOR.
 - THE CHEVRON BELT CLEANER SYSTEM IS RECOMMENDED ON CHEVRON RIBBED OR CLEATED BELTS.
 - MARTIN ENGINEERING RECOMMENDS INSTALLING A LEFT AND A RIGHT CLEANER ASSEMBLIES FOR BEST CLEANING RESULTS.
 - REFER TO OPERATOR'S MANUALS M3296 & M3296 FOR COMPLETE INSTALLATION INSTRUCTIONS.
 - FOR BELT WIDTHS 48.00 [1372] AND UNDER, MARTIN ENGINEERING RECOMMENDS USING A SINGLE TWIST TENSIONER ASSEMBLY, P/N 38850. FOR BELTS 54.00 [1372] AND LARGER USE A DUAL TWIST TENSIONER ASSEMBLY, P/N 38850-2.
 - BLADE COVERAGE WITH BE 5.50 [140] LESS THAN BELT WIDTH DUE TO POSSIBLE MISTRACKING OR DAMAGED EDGES OF BELT.
 - FOR BEST RESULTS, INSTALL A ROLLER FOR PROPER BELT SUPPORT IF CLEANER IS NOT INSTALLED ON HEAD PULLEY.



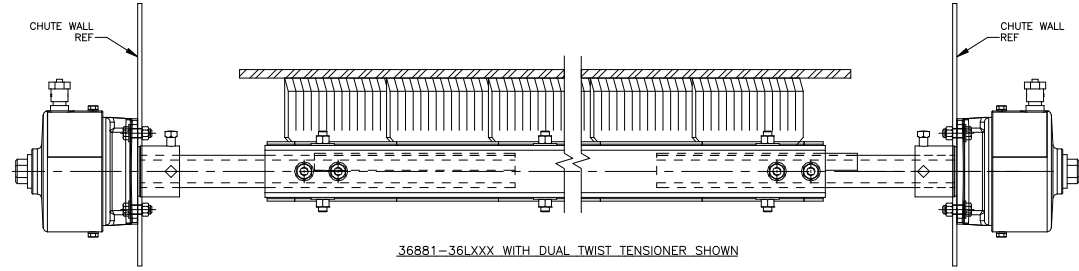
TENSIONER CHUTE WALL CUTOUT DETAIL
TYPICAL BOTH SIDES



SINGLE TENSIONER
FARSIDE MOUNT DETAIL



TWIST TENSIONER DETAIL



36881-36LXXX WITH DUAL TWIST TENSIONER SHOWN

© Copyright 2008 Martin Engineering. All rights reserved. Covered by U.S. and foreign patents pending and issued. ® and ™ Indicate trademarks of Martin Engineering.

MARTIN ENGINEERING NEPONSET ILLINOIS USA

TITLE	DURT TRACKER™ CHEVRON BELT CLEANER W/SPLIT ALUMINUM FRAME AND TWIST TENSIONER	DRAWN	JAP
DATE	07/02/08	CHECKED	
ENG.	9/29	DATE	07/03/08
APPROVED	8/24	DATE	07/07/08

NO.	DESCRIPTION	ECN	DATE	BY	SALES DRAWING	S50058
AutoCAD	REVISION				MD0759	

SCALE 1/4"=1"