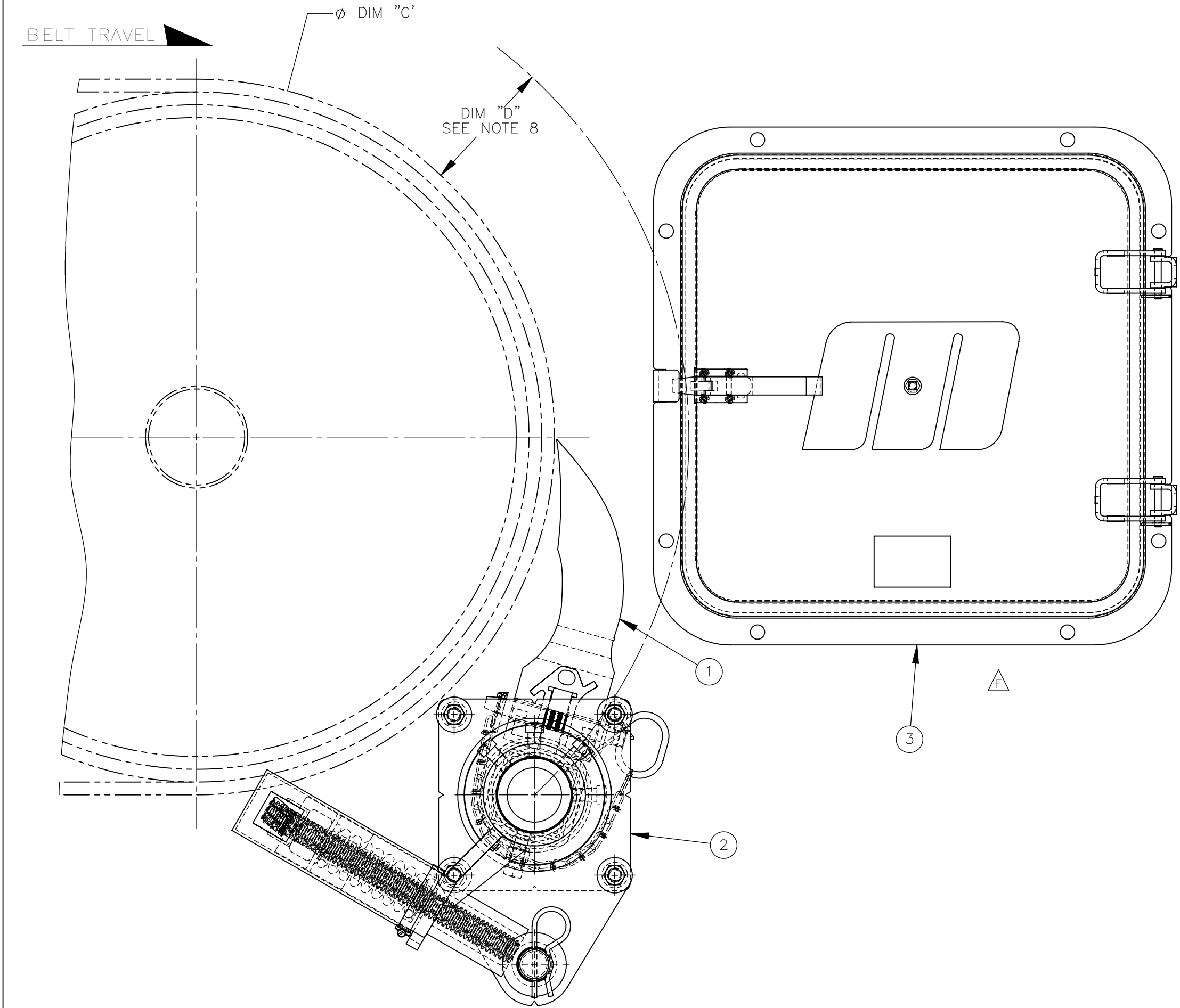


PART NUMBER	BELT WIDTH	DIM "A" MAX FRAME LENGTH	DIM "B" BLADE COVERAGE
35899-18XX12XXX	400-500 [18.00]	1676.4 [66.00]	304.8 [12.00]
35899-24XX12XXX	500-650 [24.00]	1828.8 [72.00]	304.8 [12.00]
35899-24XX18XXX	500-650 [24.00]	1828.8 [72.00]	457.2 [18.00]
35899-30XX18XXX	650-800 [30.00]	1981.2 [78.00]	457.2 [18.00]
35899-30XX24XXX	650-800 [30.00]	1981.2 [78.00]	609.6 [24.00]
35899-36XX24XXX	800-1000 [36.00]	2133.6 [84.00]	609.6 [24.00]
35899-36XX30XXX	800-1000 [36.00]	2133.6 [84.00]	762.0 [30.00]
35899-42XX30XXX	1000-1200 [42.00]	2286.0 [90.00]	762.0 [30.00]
35899-42XX36XXX	1000-1200 [42.00]	2286.0 [90.00]	914.4 [36.00]
35899-48XX36XXX	1200-1400 [48.00]	2438.4 [96.00]	914.4 [36.00]

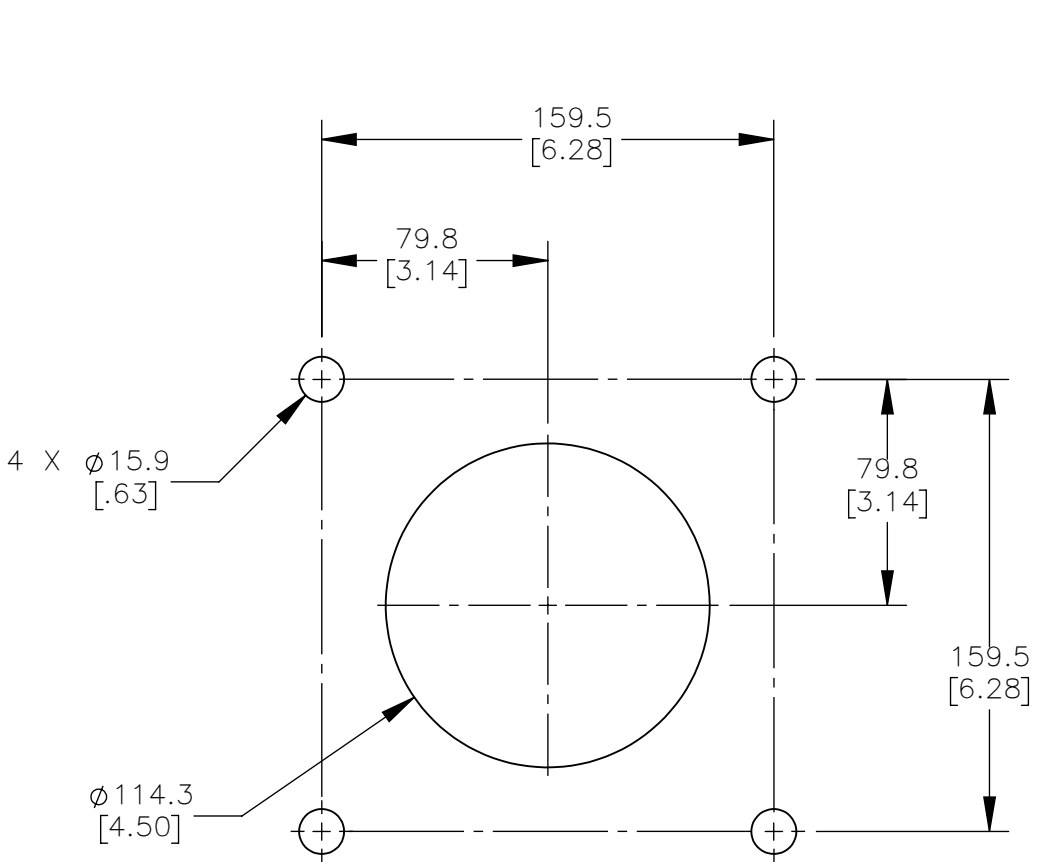
BLADE COLOR CHART	
ASSEMBLY PART NO.	BLADE COLOR
35899-XXXXXXX	ORANGE
35899-XXXXXXBRX	BROWN
35899-XXXXXXCLX	TAN
35899-XXXXXXGRX	GREEN
35899-XXXXXXNBX	NAVY BLUE
35899-XX10XXYLX	YELLOW
35899-XX10XXCYX	YELLOW W/CERAMIC BEADS

** = THESE BLADES ARE ONLY OFFERED AS SEGMENTED (10). THESE BLADES ARE INDIVIDUAL 152.4 [6.00] WIDE BLADES. ALL THE OTHER COLOR BLADES CAN BE SEGMENTED BY CUTTING THE SOLID BLADE. SEGMENTS HAVE 0.0 [0.00] WIDTH WITH NO MATERIAL REMOVED.

MOUNTING LOCATION CHART		
Ø DIM "C" HEAD PULLEY DIA, INCLUDING BELT AND LAGGING	DIM "D"	
406.4 [16.00]	146.1 [5.75]	
508.0 [20.00]	139.7 [5.50]	
609.6 [24.00]	133.4 [5.25]	
711.2 [28.00]	127.0 [5.00]	
762.0-3048.0 [30.00-120.00]	120.7 [4.75]	



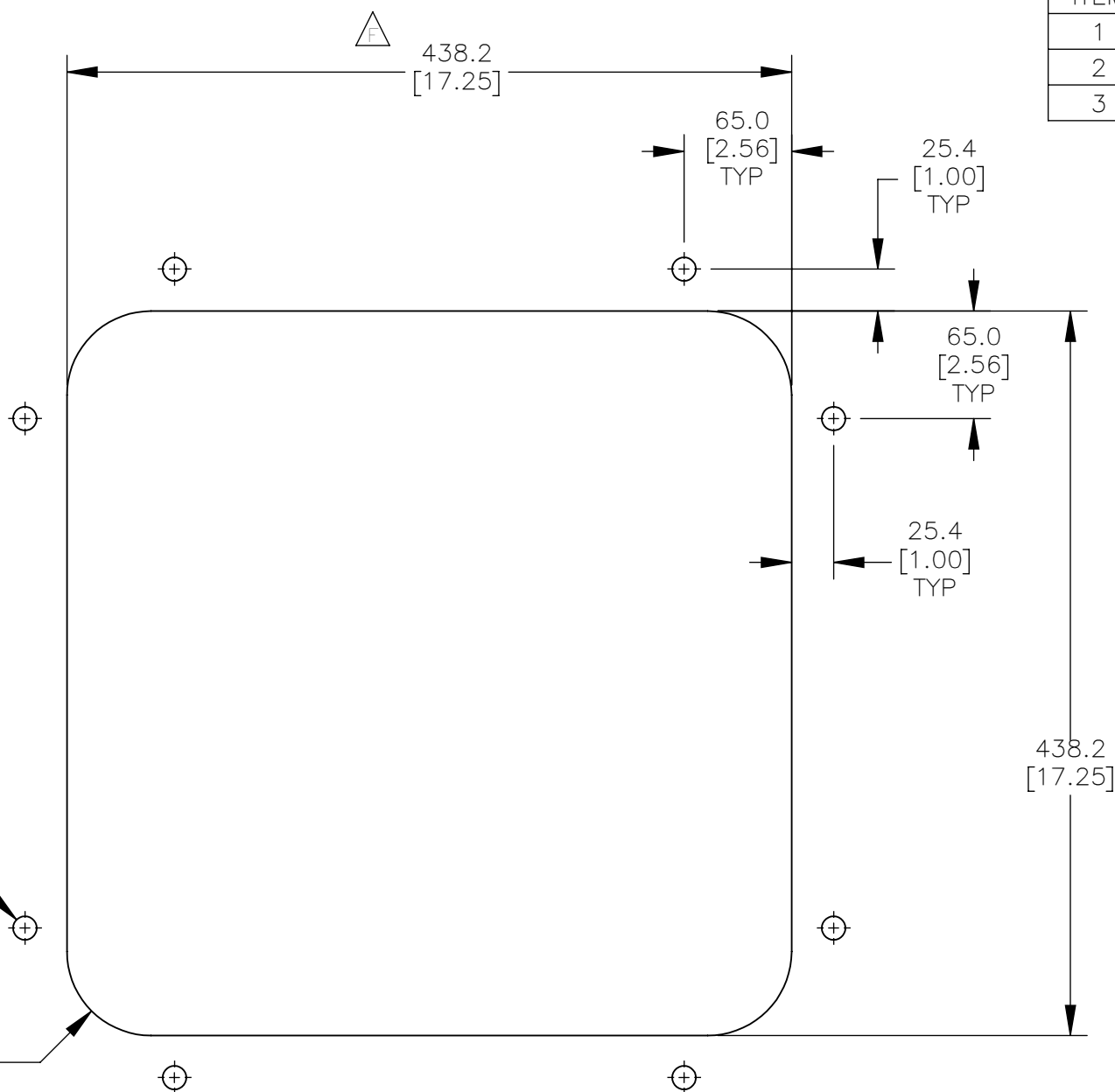
- NOTES:
- 1) ALL DIMENSIONS ARE GIVEN IN MM [INCHES].
 - 2) ALL DIMENSIONS ARE FOR REFERENCE ONLY.
 - 3) FOR EASY ACCESSIBILITY AND MAINTENANCE, MARTIN ENGINEERING RECOMMENDS BOLTING CLEANER TO EXISTING STRUCTURE WHEN APPLICABLE.
 - 4) CLEANER IS SHOWN IN RECOMMENDED WORKING POSITION.
 - 5) WHERE EXTREME OR UNUSUAL CONDITIONS EXIST, OR SPECIAL MAINFRAME LENGTHS ARE REQUIRED CONTACT MARIN ENGINEERING.
 - 6) REFER TO OPERATOR'S MANUALS M3504, & M3127 FOR COMPLETE INSTALLATION INSTRUCTIONS.
 - 7) FOR BELT WIDTHS 1200-1400 [48.00] AND LARGER, MARTIN ENGINEERING RECOMMENDS USING A DUAL XHD SPRING LEVER SHOCK MOUNT TENSIONER.
 - 8) CLEANER CAN BE LOCATED ANYWHERE ALONG THE ARC, AS LONG AS THE MAINFRAME IS OUT OF MATERIAL TRAJECTORY AND THE BLADE TIPS ARE BELOW THE HORIZONTAL CENTERLINE OF THE HEAD PULLEY.
 - 9) THE XHD QC1 PRE-CLEANER BLADES ARE DESIGNED TO REMOVE HEAVY CARRYBACK ONLY. DO NOT OVERTENSION.
 - 10) ONE FULL TURN OF THE TENSIONING NUT ON THE SPRING TENSIONER IS EQUAL TO 5.1 [0.20].
 - 11) BLADE COVERAGE IS LESS THAN BELT WIDTH, DUE TO POSSIBLE MISTRACKING OR DAMAGED EDGES OF THE BELT.
 - 12) THE FIRST TWO XX'S OF THE CLEANER PART NUMBER INDICATE BELT WIDTH. THE THIRD X INDICATES SOLID (1) OR SEGMENTED (0). THE NEXT TWO XX'S INDICATE BLADE WIDTH. THE LAST TWO XX'S INDICATE BLADE COLOR/MATERIAL. EXAMPLE: 35899-421136BR (42.00 BELT WIDTH 36.00 SOLID BROWN BLADE).



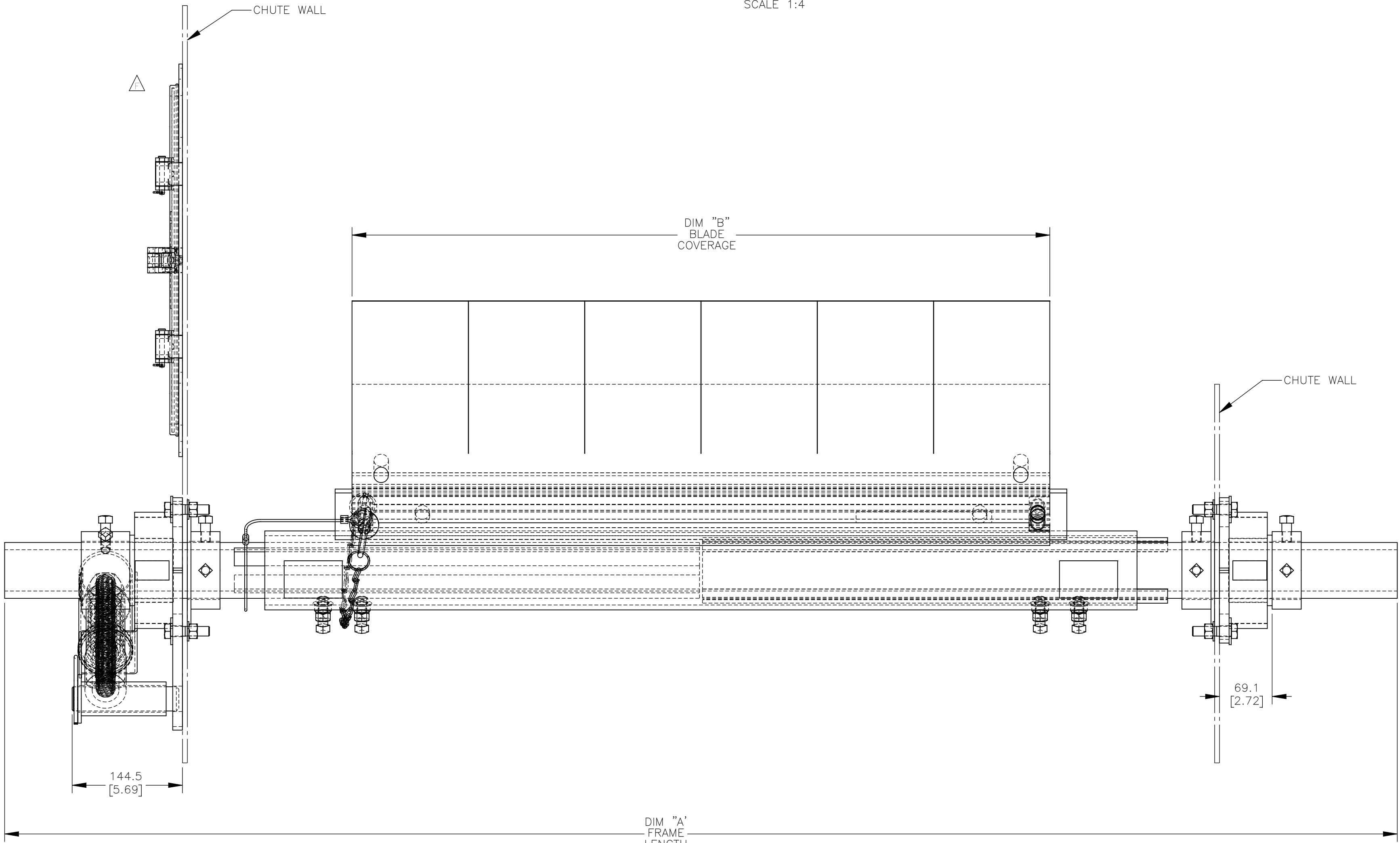
TENSIONER CHUTE CUTOUT DETAIL
SCALE 3:8
TYPICAL BOTH SIDES

8 X Ø14.3 [0.56]

4 X R50.8 [2.00]



ACCESS DOOR CUTOUT DETAIL
SCALE 1:4



DIM "A" FRAME LENGTH

ITEM	QTY.	DESCRIPTION	PART NUMBER
1	1	MARTIN QC1 XHD ASSEMBLY	SEE CHART
2	1	MARTIN XHD SPRING TENSIONER	38003
3	1	MARTIN LOW PROFILE ACCESS DOOR	CYA-1818

© Copyright 2020 Martin Engineering. All rights reserved. Covered by U.S. and foreign patents pending and issued. ® and ™ indicate trademarks of Martin Engineering.			
		MARTIN ENGINEERING NEPONSET, IL USA	
TITLE		DRAWN RND DATE 01/16/20	
		CHECKED	
MARTIN QC1 XHD PRE-CLEANER WITH XHD SPRING TENSIONER & 18X18 ACCESS DOOR		ENG. DATE 10/28/20 APPROVED 11/10/20	
SALES DRAWING		SCALE 1:4	
NO. DESCRIPTION		PR10311	
SOLIDWORKS		S50033-S	