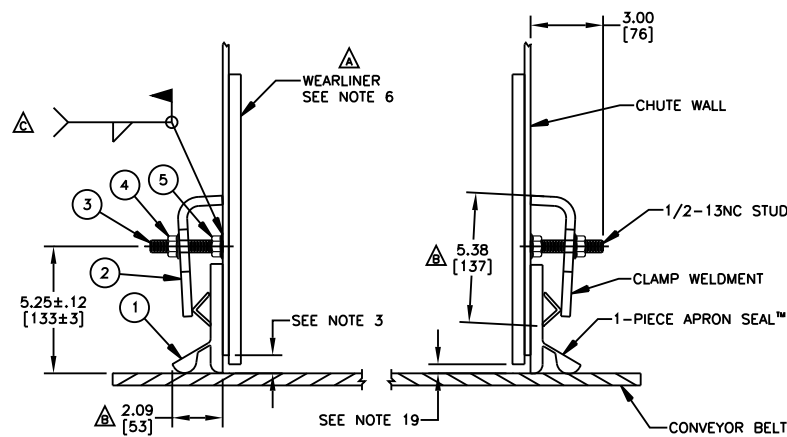


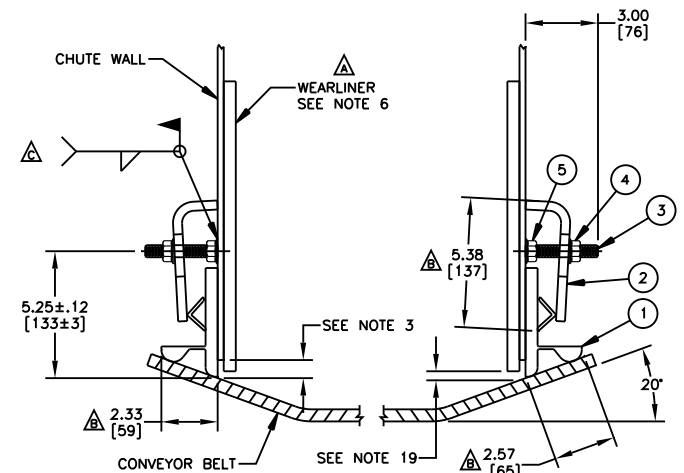
ANGLE CLAMP WELDMENT DETAIL

INSTALLATION INSTRUCTIONS:

- STEP 1: SCRIBE A LINE ON CHUTE WALL PARALLEL TO BELT SURFACE 5.25 [133] ABOVE BELT.
- STEP 2: ALONG THIS LINE, MAKE FIRST MARK 5.88 [149] FROM END OF CHUTE WALL AND MARK EVERY 12.00 [305] AFTER THAT.
- STEP 3: ON THESE MARKED CENTERS, WELD 1/2-13NC NUT. THEN INSERT STUD. MAKE SURE STUDS ARE PERPENDICULAR TO THE CHUTE WALL TO ENSURE EVEN CLAMP CONTACT.
- STEP 4: INSTALL 1-PIECE APRON SEAL™ AND PLACE AGAINST CHUTE WALL. MAKING SURE THAT SKIRTING IS ALSO TOUCHING THE BELT, SLIDE CLAMPS OVER STUDS.
- STEP 5: PUSH ANGLE CLAMP WELDMENT TIGHT AGAINST SKIRTING AND INSTALL FLANGE NUT. TIGHTEN FLANGE NUT TO 40 FT./LBS.



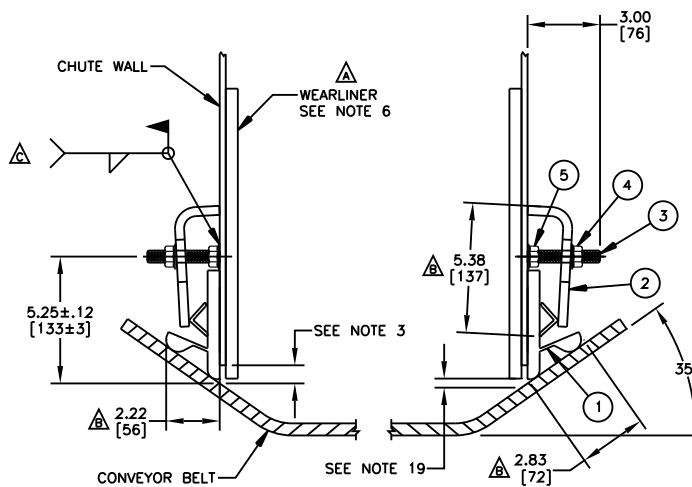
DETAIL FOR FLAT BELTS  
(ALL DIMENSIONS TYPICAL EACH SIDE OF CONVEYOR)



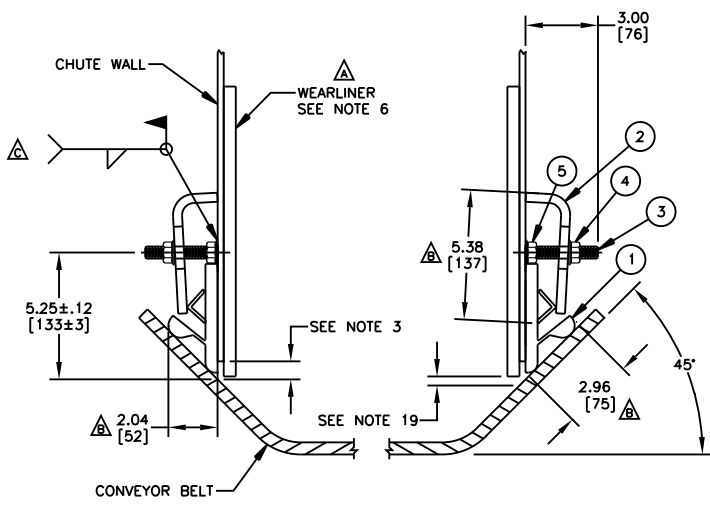
DETAIL FOR 20° BELTS  
(ALL DIMENSIONS TYPICAL EACH SIDE OF CONVEYOR)

NOTES:

- 1) ALL DIMENSIONS ARE GIVEN IN INCHES [MM].
- 2) ALL DIMENSIONS ARE FOR REFERENCE ONLY.
- 3) MARTIN ENGINEERING RECOMMENDS CHUTE WALL BEING WITHIN .75 [19] OF BELT.
- 4) APRON SEAL™ CAN BE ADJUSTED INDIVIDUALLY PER CLAMP TO MEET VARIATIONS IN BELT PROFILE.
- 5) A MINIMUM OF 8.00 [203] VERTICAL AND 4.00 [102] HORIZONTAL CLEARANCE IS REQUIRED TO INSTALL APRON SEAL™ AND CLAMPS.
- 6) TO PROVIDE AN EFFECTIVE SEAL, WEARLINERS ARE TO BE USED TO PREVENT THE MAIN LOAD FROM CONTACTING THE APRON SEAL™.
- 7) WHEN WEARLINERS ARE BOLTED TO CHUTE WALL, APRON SEAL™ AND ANGLE CLAMPS ARE TO BE MOUNTED IN A MANNER AS TO ALLOW EASY ACCESS TO BOLTS.
- 8) APRON SEAL™ IS DESIGNED TO SEAT IN QUICKLY REGARDLESS OF TROUGH ANGLE.
- 9) APRON SEAL™ IS PLIABLE ENOUGH TO STRETCH OR BEND AROUND WEARLINER BOLTS, APRON SEAL™ CAN ALSO BE NOTCHED OUT AROUND BOLTS IF NECESSARY.
- 10) 1-PIECE APRON SEAL™ IS DESIGNED AS A DUST SEAL ONLY. IT IS NOT DESIGNED TO BE USED AS A MATERIAL HOLDBACK OR LOAD CARRYING SURFACE.
- 11) BELT MUST NOT LIFT OFF IDLERS DURING STARTUP OR WHILE BELT IS IN OPERATION.
- 12) BELT MUST TRACK PROPERLY TO PREVENT BELT FROM RUNNING BEHIND APRON SEAL™.
- 13) CONSULT MARTIN ENGINEERING FOR INSTALLATIONS WITH UNUSUAL OR SEVERE CONDITIONS, I.E.: CONCAVE/CONVEX CURVES, EXTREME SIDE PRESSURE, EXTREMELY FAST OR SLOW BELTS, TEMPERATURE EXTREMES, CORROSIVE ATMOSPHERES, ETC.
- 14) APRON SEAL™ AND WEARLINER SHOULD BEGIN AT LEAST 12.00 [305] BEFORE INLET SIDE OF TRANSFER CHUTE WALL.
- 15) CONTACT MARTIN ENGINEERING PRIOR TO MOUNTING THESE PRODUCTS IN ANY OTHER WAY THAN WHAT IS DEPICTED ON THIS DRAWING OR IN THE OPERATORS MANUAL.
- 16) ANGLE CLAMP WELDMENT IS TO BE FULLY TIGHTENED AGAINST CHUTE WALL.
- 17) ANGLE CLAMP WELDMENT MUST HAVE FIRM BACKING TO INSURE PROPER CLAMP FORCE.
- 18) REFER TO OPERATORS MANUAL DURING INSTALLATION. THIS DRAWING IS NOT TO BE USED AS A SUBSTITUTE FOR THE OPERATORS MANUAL.
- 19) .38 [10] MAX. IN IMPACT AREA, TAPERING TO .75 [19] AT EXIT AREA.



DETAIL FOR 35° BELTS  
(ALL DIMENSIONS TYPICAL EACH SIDE OF CONVEYOR)



DETAIL FOR 45° BELTS  
(ALL DIMENSIONS TYPICAL EACH SIDE OF CONVEYOR)

| ITEM | QTY. | DESCRIPTION                      | PART NUMBER |
|------|------|----------------------------------|-------------|
| 1    | ***  | APRON SEAL™ 1-PIECE              | 100724      |
| 2    | *    | LOW PROFILE ANGLE CLAMP WELDMENT | 32600       |
| 3    | **   | STUD THREADED 1/2-13NC X 3       | 31189       |
| 4    | **   | NUT FLANGE 1/2-13NC ZP           | 18843       |
| 5    | **   | NUT FLANGE 1/2-13NC PLAIN        | 34134       |

- \* - EACH WELDMENT IS 71.88 [1826] LONG. (1) WELDMENT REQUIRED PER EVERY 6'-0" [1829] OF APRON SEAL™.
- \*\* - QTY. 1 EACH OF P/N 31189, 18843 AND 34134 ARE SUPPLIED PER EACH FOOT OF APRON SEAL™. P/N 18843 IS USED TO HOLD THE ANGLE CLAMP IN PLACE ON THE STUD. P/N 34134 IS WELDED TO THE CHUTE WALL AND THEN STUD IS INSERTED.
- \*\*\* - CUT TO LENGTH (SPECIFY LENGTH NEEDED IN FEET).

© Copyright 1995 Martin Engineering. All rights reserved. Covered by U.S. and foreign patents pending and issued. ® and TM indicate trademarks of Martin Engineering.

MARTIN ENGINEERING-USA  
NEPONSET, IL USA

| NO. | DESCRIPTION  | ECN   | DATE     | BY  |
|-----|--|-------|----------|-----|
| C   | ADDED P/N 34134 TO BOM / CHGD WELD FROM STUD WELD TO FIELD WELD / UPDATED * & ** NOTES AND INSTALLATION INSTRUCTION STEP 3   | 14368 | 10/28/15 | JAH |
| B   | CHG P/N 33544-xx TO 100724 / CHGD DIM FROM 5.50 TO 5.38 (4 PLACES), 1.87 TO 2.09, 1.99 TO 2.33, 2.12 TO 2.27, 1.94 TO 2.22, 2.37 TO 2.83, 1.82 TO 2.04 & 2.59 TO 2.96 / UPDATED P/N 32600 PICTORIALY DUE TO CHG. | 9929  | 05/10/01 | CGH |
| A   | CHGD F/DEFLECTOR TO STRAIGHT WEARLINER, UPDATED PICTORIALY & IN NOTES / ADDED CHART / ADDED * & ** NOTES / RMVD STEP 6 / CHGD F/33544-xx4X TO 33544-xx   | 8619  | 08/08/97 | RND |
|     | REVISION   |       |          |     |

| TITLE   | DATE     | BY  |
|---|----------|-----|
| INSTALLATION DRAWING FOR LOW PROFILE ANGLE CLAMP WITH 1-PIECE APRON SEAL™ | 08/14/95 | JAH |
| CHECKED   | 05/23/01 | CGH |
| APPROVED  | 05/24/01 | RND |
| SALES DRAWING   | S34342   |     |
| SCALE   | 1/4      |     |



