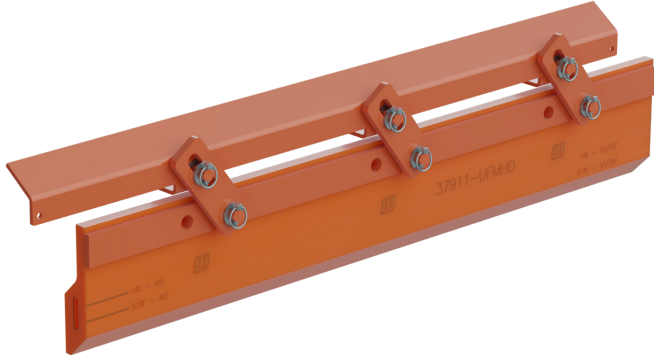


Martin® GravitySeal™ Self-Adjusting Skirting HD Max



[Martin® GravitySeal™ Self-Adjusting Skirting HD Max](#) provides an effective skirtboard seal that eliminates spillage and prevents the problems caused by fugitive material. It self-adjusts to eliminate skirtboard maintenance. As it requires 2.88 inches (73 mm) of free belt space outside the chute, Martin® GravitySeal™ Self-Adjusting Skirting HD Max is the ideal sealing system for conveyors with chutes close to the belt edge. The urethane and clamp assembly can be installed in spaces as low as 13.0 in. (330 mm) above the belt.

SPECIFICATIONS

Seal Strip	
Material	90 Durometer Shore A Urethane
Thickness	2.0 in. (50 mm)
Wear Life	3.0 in. (75 mm) (30° and 35° angle)
	2.0 in. (50 mm) (45° angle)
Temperature Range	Orange Color
	-40° to 180° F (-40° to 80° C)
	Green Color
	Continuous
	-40° to 300° F (-40° to 150° C)
	Intermittent
	350° F (177° C)
Maximum Belt Speed	1000 fpm (5 m/s)
Clamp Assembly	
Material	Mild Steel or 304 Stainless Steel
Length	48 in. (1220 mm)
Installed Height	Unidirectional Belts
	13.0 in. (330 mm)
	Reversing Belts
	13.5 in. (343 mm)

Refer to Urethane Skirting System Selection Guide (Form No. L4220) for material specifications and application criteria.

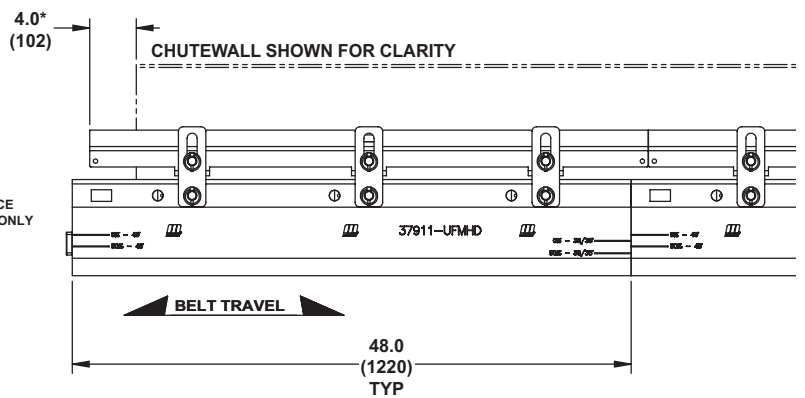
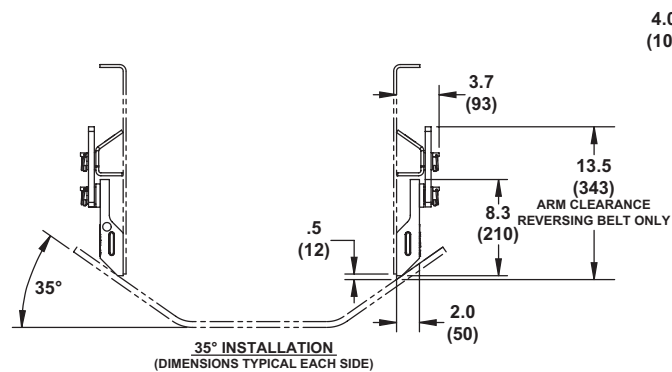
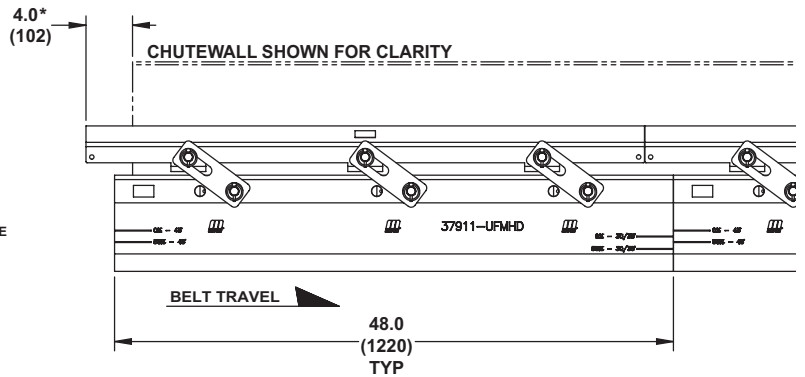
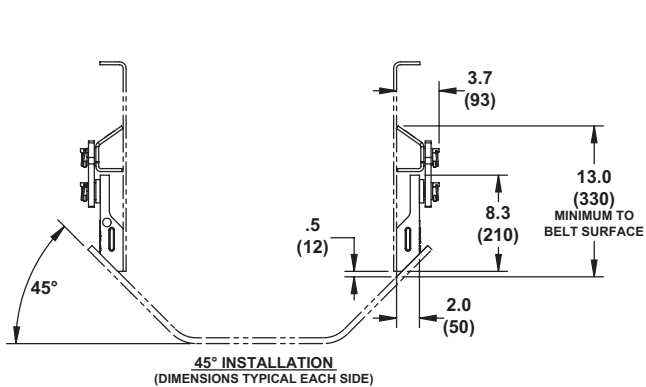
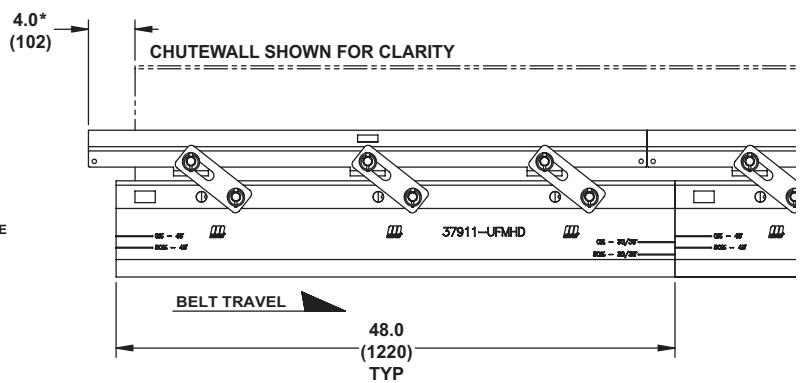
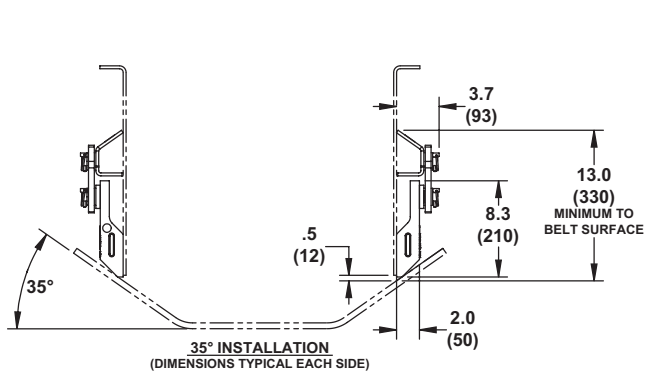
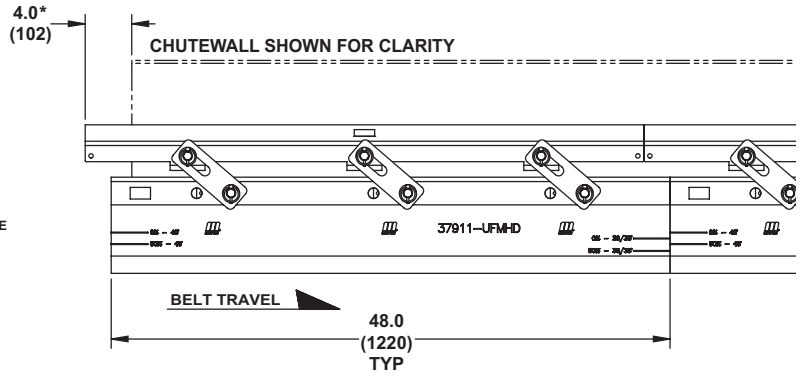
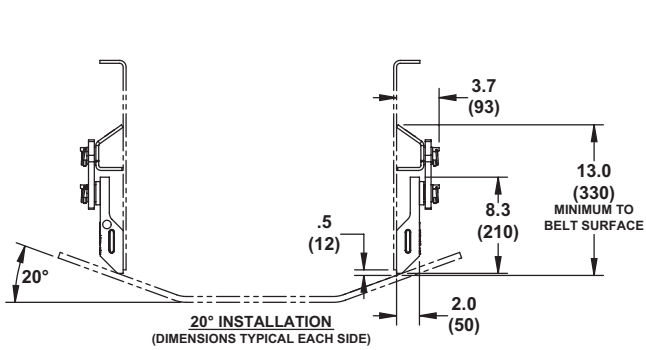
BENEFITS

- **“Self-Adjusts” to Maintain Effective Barrier.**
- **Installs Easily in Tight Clearances.**
- **Simple “No-Tool” Urethane Replacement.**
- **Prevents Regulatory Problems from Spillage.**
- **Minimizes Cleanup Labor and Expense.**
- **Preserves Conveyor Components from Fugitive Material.**
- **Keeps Cargo on Belt to Improve Conveyor Efficiency.**

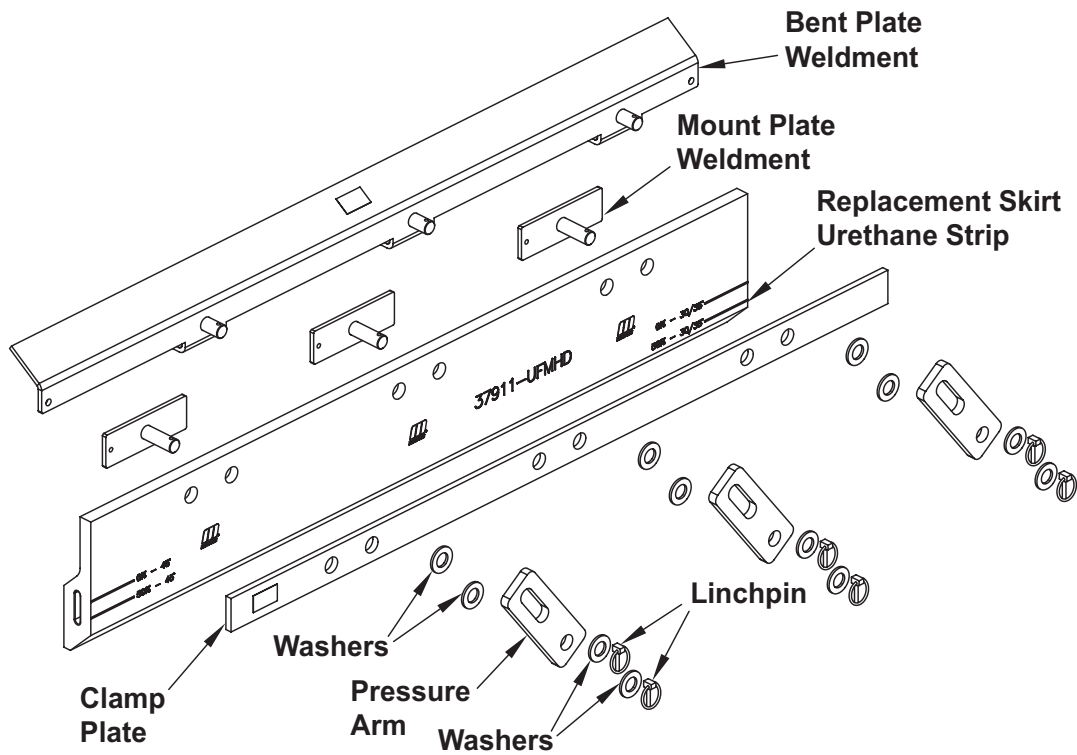
NOTES

- **Maintains Seal Without Maintenance**
GravitySeal™ system rides on belt, self-adjusting to maintain effective seal automatically as belt path fluctuates and sealing strip wears.
- **Belt Edge Requirement**
Fits on any belt; provides effective seal on conveyors where chute width leaves 2.88 in. (73 mm) of free belt area for sealing.
- **Quick and Easy to Install**
Short 48 in. (1220 mm) clamp sections simplify installation.
- **Long-Lasting Performance**
Durable sealing strip provides 2.0 in. (50 mm) wear life for 45° troughing angles with 3.0 in. (75 mm) wear life for 30° and 35° troughing angles. Stainless Steel assemblies available upon request.
- **“No-Tool” Urethane Replacement**
Held in place with linchpins, replacement of the worn sealing strip is a quick, easy, no-tool operation.
- **Guaranteed Installation Available from Martin Services**

DIMENSIONS -- in. (mm)



*MARTIN® GRAVITYSEAL™ SELF-ADJUSTING SKIRTING HD MAX SHOULD BEGIN AT LEAST 4 INCHES (102 MM) BEFORE THE INLET SIDE OF THE CHUTE WALL.



ORDER INFORMATION

Martin® Self-Adjusting Skirting	Length	Part Number
Martin® GravitySeal™ Self-Adjusting Skirting HD Max Assembly	48 in. (1220 mm)	37911-GS4X*
Martin® GravitySeal™ Self-Adjusting Skirting HD Max Urethane 48" Strip	48 in. (1220 mm)	37911-UFMHD (Need 1 per Clamp Assembly)

* X indicates mild steel (blank) or stainless steel (S)

Order enough Clamp Assemblies to match installation requirements for both sides of conveyor.

48 in. (1220) long strips that interlock with each other on the ends.

Order one Installation Kit per entire installation (includes installation spacing guides and instructions).

NOTES

Failure to keep the belt tracking properly may result in spillage, premature failure of the skirt urethane and damage to the belt or structure.

Installation of Martin® Wear Liner is recommended to protect sealing system from pressure of material load.

Martin® GravitySeal™ Self-Adjusting Skirting HD Max should begin at least 4 inches (102 mm) before the inlet side of the chute wall (closest to the tail pulley) and extend beyond the end of the chute. As Martin® GravitySeal™ Self-Adjusting Skirting HD Max wears from new to completely worn, the system will move backward on the conveyor approximately 4 inches (102 mm).



Martin Engineering USA
 One Martin Place
 Neponset, IL 61345-9766 USA
 800 544 2947 or 309 852 2384
 Fax 800 814 1553
 www.martin-eng.com

**COMPANY WITH
 QUALITY SYSTEM
 CERTIFIED BY DNV
 ISO 9001**