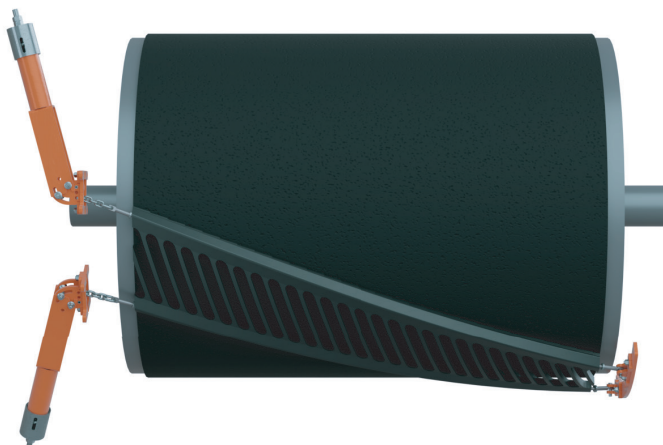


CleanScape® Heated Primary Cleaners



CONTROLLER SPECIFICATIONS

Electrical Requirements	240VAC, Single phase, 60 Hz
Power Consumption	350W-900W per heater *dependant on belt width
Service Temperature Range	-30°F-130°F (-34°C-55°C)**
Temperature Range Output	180°F-200°F (65°C-93°C)

*Blade can be installed where it sees up to 250°F (121°C). Controller needs to not exceed 130°F (54°C)

**Can operate in lower temperatures. Contact Martin Engineering to discuss.

FEATURES & BENEFITS

- Simple installation, minimum space required
- Low wear to the belt and cleaner
- Blade completely corrosion resistant
- Suitable for use with all types of mechanical joints
- Designed for use in extreme cold
- Low maintenance
- Available with stainless steel installation kits
- Suitable for use with reversing belts
- Indoor or outdoor use - with NEMA 4X enclosure

CLEANER SPECIFICATIONS

Cleaner Type	Pulley Diameter in. (mm)		Belt Width in. (mm)	Maximum Belt Speed fpm (m/s)	
	Min.	Max.		Vulcanized Splice	Mechanical Splice
C1CMXRXXXXXX	22 (550)	34 (900)	24-72 (600-1800)	1500 (8)	800 (4)
C1CLXRXXXXXX	32 (800)	50 (1250)	30-72 (750-1800)	1500 (8)	800 (4)

CARBIDE BLADE SELECTION

Carbide Selection	Application Description	Typical Materials
B	Suitable for moderate abrasive products and medium belt speeds. Applicable with mechanical belt splices.	Sand, coal, salt, ore, sugar

The **CleanScape® Heated Primary Cleaner** system is a reliable, practical system for heating CleanScape® Primary Cleaners at desired temperatures to better operate in harsh weather. The controller uses programmable logic to energize the heating element to desired pre-set temperatures. The CleanScape® Heated Primary Cleaner System reduces the material flow problems that exist due to build up of unnecessary material on the cleaner or from freezing over.

TECHNICAL DATA SHEET

CLEANSRAPE® MEDIUM & LARGE HEATED PRIMARY CLEANER

TENSIONER SELECTION

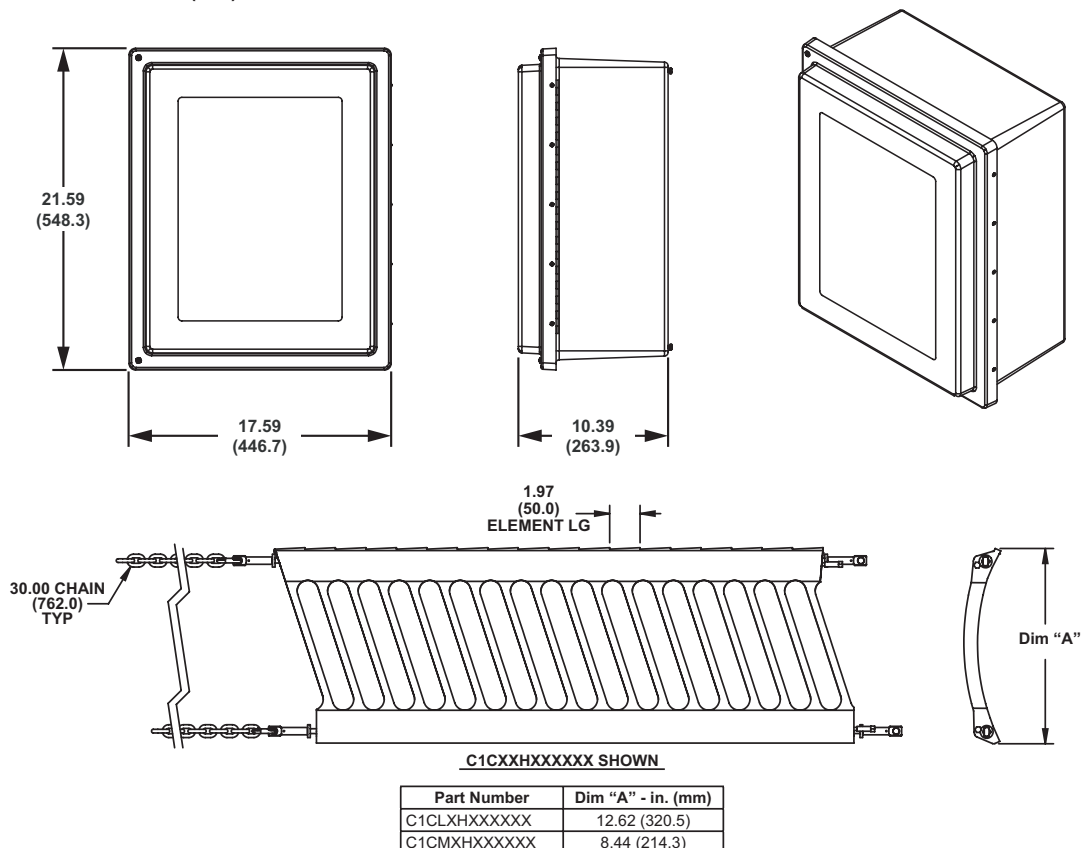
Size	Belt Width in. (mm)	Tensioner
M	≤ 54" (≤ 1400 mm)	Single 4.2kN
M	< 72" (≤ 1800 mm)	Dual 4.2kN
L	≤ 54" (≤ 1400 mm)	Single 4.2kN
L	< 78" (< 2000 mm)	Dual 4.2kN

NOMENCLATURE

1. Conveyor Products _____
2. Primary Cleaner _____
3. CleanScape _____
4. Size _____
L = Large
M = Medium
5. Assembly Type _____
B = Blade Assembly, No Tensioner
T = Blade Assembly, Standard Painted Steel Tensioner
M = Blade Assembly, Standard Painted Steel Tensioner,
Mount Plates Painted Steel
F = Blade Assembly with Stainless Steel Chain,
No Tensioner
S = Blade Assembly with Stainless Steel Chain,
Stainless Steel Tensioner
C = Blade Assembly with Stainless Steel Chain,
Stainless Steel Tensioner, Mount Plates
Stainless Steel
6. Blade Body Type _____
H = Heated Cleanscape Assembly
- 7-9. Belt Width _____
inch = S + 2 digits
mm = 3 digits (BW / 10)
10. Carbide _____
B = B Carbide Grade
- 11-12. Number of Elements _____

C 1 C X X H XXX X XX

DIMENSIONS – IN. (MM)



Martin Engineering USA
One Martin Place
Neponset, IL 61345-9766 USA
800 544 2947 or 309 852 2384
Fax 800 814 1553
www.martin-eng.com

**COMPANY WITH
QUALITY SYSTEM
CERTIFIED BY DNV
ISO 9001**

Problem Solved™ GUARANTEED!

Form No. L4215-05/25
© Martin Engineering Company 2025