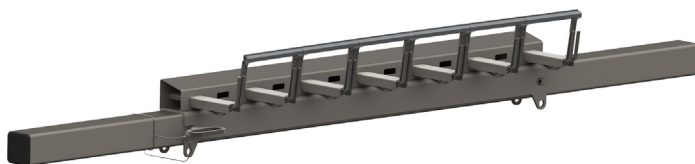


# CleanScape® Secondary Cleaner



The **CleanScape® Secondary Cleaner** is an all stainless steel assembly featuring independent 6-inch wide blades with carbide tips. Each blade tip is supported on spring loaded arms at both ends. The load springs allow independent blade rotation back and forward as well as up and down. This “range-of-motion” provides equal load pressure across each blade, absorbs obstructions, conforms to ever-changing belt undulations, and is able to arc safely in the event of reversing belt direction or belt roll back.

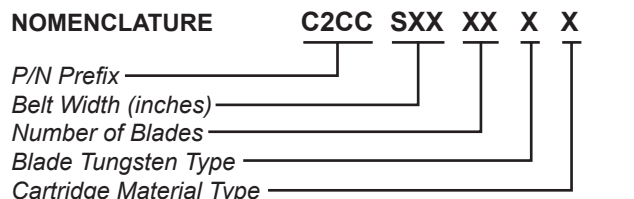
## FEATURES & BENEFITS

- Optimum cleaning results
- “Free Flow” design allows for material to pass through arms
- Crowned Mainframe design compensates for belt wear in the center
- Low Blade-to-Belt pressure
- Simple installation inside or outside of chute
- Removed material returns to main flow
- Requires less tensioning over lifespan
- Handles reversing belts and belt rollback without damage to belt
- Easy cartridge removal
- Easy adjustment of cleaning pressure

## SPECIFICATIONS

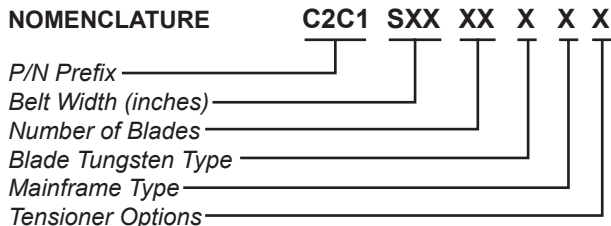
Cleaner Type	Belt Width in. (mm)	
C2CXSDXXXXXXXX	18–96 (457–2438)	
Maximum Belt Speed fpm (m/sec)		Replacement Blade Cartridge
Vulcanized Splice	Mechanical Splice	
900 (5)	600 (3)	C2CCSDXXXXXXXX

## CLEANSCAPE® SECONDARY CLEANER CARTRIDGE NOMENCLATURE



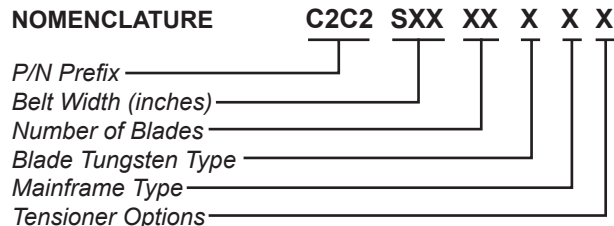
**BLADE TUNGSTEN TYPE**      **CARTRIDGE MATERIAL TYPE**  
 1: Tungsten Carbide      S: Stainless Steel

## CLEANSCAPE® SECONDARY CLEANER NOMENCLATURE



**BLADE TUNGSTEN TYPE**      **TENSIONER OPTIONS**  
 1: Tungsten Carbide      0: No Tensioner  
    S: Stainless Steel  
**MAINFRAME TYPE\***      T: Steel  
 E: Extended Stainless Steel  
 Z: Extended Painted Steel      **DOOR OPTIONS**  
 S: Stainless Steel      BLANK: No Door  
 P: Painted Steel      D: Steel  
    S: Stainless Steel

## CLEANSCAPE® SECONDARY CLEANER STS™ NOMENCLATURE



**BLADE TUNGSTEN TYPE**      **TENSIONER OPTIONS**  
 1: Tungsten Carbide      0: No Tensioner  
    P: Steel Std  
**MAINFRAME TYPE\***      Z: Stainless Steel Std  
 E: Extended Stainless Steel      S: Stainless Steel STS™  
 Z: Extended Painted Steel      T: Steel STS™  
 S: Stainless Steel  
 P: Painted Steel

\*Extended mainframe is 18 in. (457 mm) longer than standard mainframe.



**Martin Engineering USA**  
 One Martin Place  
 Neponset, IL 61345-9766 USA  
 800 544 2947 or 309 852 2384  
 Fax 800 814 1553  
 www.martin-eng.com

**COMPANY WITH  
 QUALITY SYSTEM  
 CERTIFIED BY DNV GL  
 = ISO 9001 =**