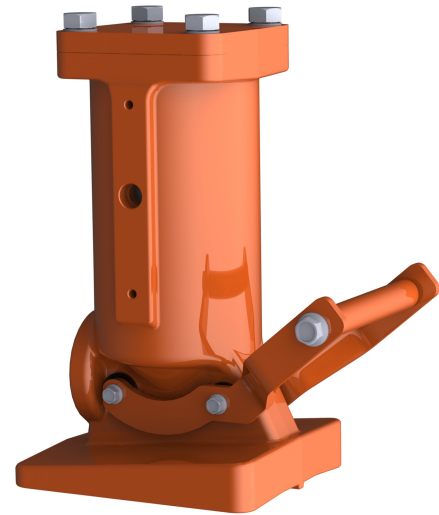


Martin® 3-inch Impacting Railcar Vibrator

This lightweight vibrator combines an impacting linear vibrator with a unibody/wedge. The [Martin® 3-inch Impacting Railcar Vibrator](#) provides up to 2024 lbs (918 kg) of force to unload stubborn materials.



BENEFITS

- Improves Efficiency**
 Linear vibrator provides powerful force to boost material flow.
- Small But Mighty**
 Compact vibrator and mount assembly provides plenty of power to unload stubborn materials.
- Gives Your Back a Break**
 Vibrator and wedge system weighs only 49 lb (22 kg), reducing risk of injury from manhandling large, unwieldy vibrators into railcar brackets.
- Easy to Handle**
 Lightweight vibrator with handle makes mounting/dismounting a “no-strain” procedure.
- Saves Your Energy**
 Air-efficient design operates on air supply from 40 to 80 psi (2.8 to 5.5 bar); consumes 30.5 cfm at 80 psi (425 L/min at 5.5 bar).
- Guaranteed Performance**
 Impacting Vibrator is covered by Martin Engineering’s *Absolutely, Positively, No Excuses Guarantee*.

NOTE

For extended life and optimum performance the air source should be filtered, regulated (80 psi max.) and lubricated (1 - 2 drops/min) within 25 feet of the vibrator.

ACCESSORIES

| Description | Part Number |
|----------------------------|-------------|
| Female Wedge Bracket (LBF) | 12735 |
| Control Line Kit | 39504 |
| Air Motor Oil (qt) | 14766 |

SPECIFICATIONS

| Model | P/N | Piston | Air Pressure | CFM | VPM | Force | Weight |
|---|-----------|--------|--------------|------|------|----------|--------|
| Martin® 3-inch Impacting Railcar Vibrator | AP5-300RC | 3" | 40 psi | 16.2 | 2800 | 1224 lbs | 49 lbs |
| | | | 60 psi | 20.8 | 3100 | 1500 lbs | |
| | | | 80 psi | 30.5 | 3600 | 2024 lbs | |



Martin Engineering USA
 One Martin Place
 Neponset, IL 61345-9766 USA
 800 544 2947 or 309 852 2384
 Fax 800 814 1553
www.martin-eng.com

**COMPANY WITH
 QUALITY SYSTEM
 CERTIFIED BY DNV GL
 = ISO 9001 =**