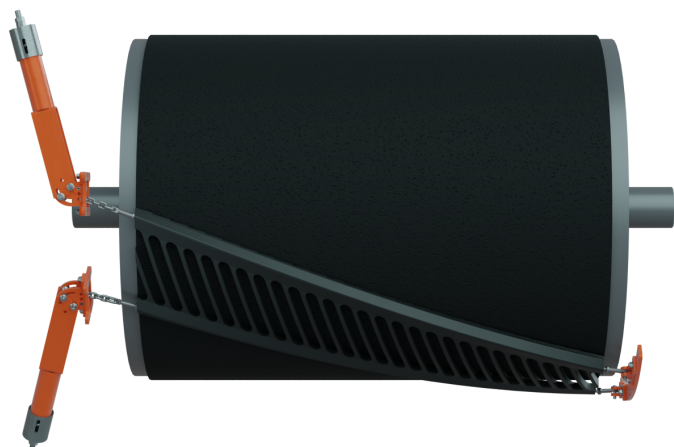


# CleanScrape® Cleaners



The **CleanScrape® Cleaner** is mounted diagonally on the discharge pulley and forms a three-dimensional curve. The cleaner has a matrix of carbide scrapers incorporated into the main rubber body during the vulcanization process. Despite a relatively low contact pressure between the belt and cleaner 85 to 95% of the adhering material is removed.

## FEATURES & BENEFITS

- Simple installation, minimum space required
- Low wear to the belt and cleaner
- Blade completely corrosion resistant
- Suitable for use with all types of mechanical joints

- Low maintenance
- Available with stainless steel installation kits
- Suitable for use in explosive atmospheres
- Suitable for use with reversing belts

## SPECIFICATIONS

Cleaner Type	Pulley Diameter mm (in.)		Belt Width mm (in.)	Maximum Belt Speed m/s (fpm)	
	Min.	Max.		Vulcanized Splice	Mechanical Splice
C1CSXRXXXXXX	300 (12)	550 (22)	400-1050 (18-42)	6 (1200)	4 (800)
C1CMXRXXXXXX	550 (22)	900 (34)	450-1800 (18-72)	8 (1500)	4 (800)
C1CLXRXXXXXX	800 (32)	1250 (50)	750-2600 (30-96)	8 (1500)	4 (800)
C1CHXRXXXXXX	800 (32)	2000 (78)	1000-3000 (42-120)	8 (1500)	6 (1200)

## CARBIDE BLADE SELECTION

Carbide Selection	Application Description	Typical Materials
A	Suitable for less abrasive products and medium belt speeds. Applicable with mechanical belt splices.	Limestone, gypsum, potash
B	Suitable for moderate abrasive products and medium belt speeds. Applicable with mechanical belt splices.	Sand, coal, salt, ore, sugar
C	Suitable for extremely abrasive materials and highest belt speeds. Do not use with mechanical belt splices.	Quartz sand, ash, ore, hardstone, slag, sinter

\*H available only with carbide B.

# TECHNICAL DATA SHEET

**CLEANSRAPE® SMALL CLEANER**

**GENERAL NOTES:**

1) Standard:

- Copper Swages
- Stainless Steel Thimble

**TENSIONER SELECTION**

Size	Belt Width mm (in.)	Tensioner
S	≤ 1050 mm (≤ 42")	Single 2.8kN

**NOMENCLATURE**

C 1 C S X R XXX X XX

1. Conveyor Products \_\_\_\_\_
2. Primary Cleaner \_\_\_\_\_
3. CleanScape \_\_\_\_\_
4. Size  
S = Small \_\_\_\_\_
5. Assembly Type \_\_\_\_\_  
B = Blade Assembly, No Tensioner  
T = Blade Assembly, Tensioner Standard Painted Steel  
M = Blade Assembly, Tensioner Standard Painted Steel, Mount Plates Painted Steel  
S = Blade Assembly, Tensioner Stainless Steel  
P = Blade Assembly, Multi-Functional Painted Steel  
F = Blade Assembly, Multi-Functional Stainless Steel  
C = Blade Assembly, Multi-Functional Stainless Steel, Mount Plates Stainless Steel
6. Blade Body Material \_\_\_\_\_  
R = Rubber
- 7-9. Width  
inch = S + 2 digits \_\_\_\_\_  
mm = 3 digits [BW / 10]
10. Carbide  
A ; B ; C \_\_\_\_\_
- 11-12. Number of Elements \_\_\_\_\_

**For Assemblies with Ceramic Tiles:**  
Add a "C" to the End of the Part Number.

**CLEANSRAPE® MEDIUM & LARGE CLEANER**

**GENERAL NOTES:**

1) Standard:

- Stainless wire rope eyelet

**TENSIONER SELECTION**

Size	Belt Width mm (in.)	Tensioner
M	≤ 1400 mm (≤ 54")	Single 4.2kN
M	≤ 1800 mm (≤ 72")	Dual 4.2kN
L	≤ 1400 mm (≤ 54")	Single 4.2kN
L	< 2000 mm (< 78")	Dual 4.2kN
L	≥ 2000 mm (≥ 78")	Dual 6.6kN

**NOMENCLATURE**

C 1 C X X R XXX X XX

1. Conveyor Products \_\_\_\_\_
2. Primary Cleaner \_\_\_\_\_
3. CleanScape \_\_\_\_\_
4. Size  
M = Medium ; L = Large \_\_\_\_\_
5. Assembly Type \_\_\_\_\_  
B = Blade Assembly, No Tensioner  
T = Blade Assembly, Standard Painted Steel Tensioner  
M = Blade Assembly, Standard Painted Tensioner, Mount Plates Painted Steel  
F = Blade Assembly with Stainless Steel Chain, No Tensioner  
S = Blade Assembly with Stainless Steel Chain, Stainless Steel Tensioner  
C = Blade Assembly with Stainless Steel Chain, Stainless Steel Tensioner, Mount Plates Stainless Steel
6. Blade Body Material \_\_\_\_\_  
R = Rubber
- 7-9. Width  
inch = S + 2 digits \_\_\_\_\_  
SA2: 102 inches  
SA8: 108 inches  
mm = 3 digits [BW / 10]
10. Carbide  
A ; B ; C \_\_\_\_\_
- 11-12. Number of Elements \_\_\_\_\_

**For Assemblies with Ceramic Tiles:**  
Add a "C" to the End of the Part Number.

# TECHNICAL DATA SHEET

## CLEANSRAPE® HD CLEANER

### GENERAL NOTES:

- 1) Standard: H available only with carbide B
- 2) Standard:
  - Stainless wire rope eyelet

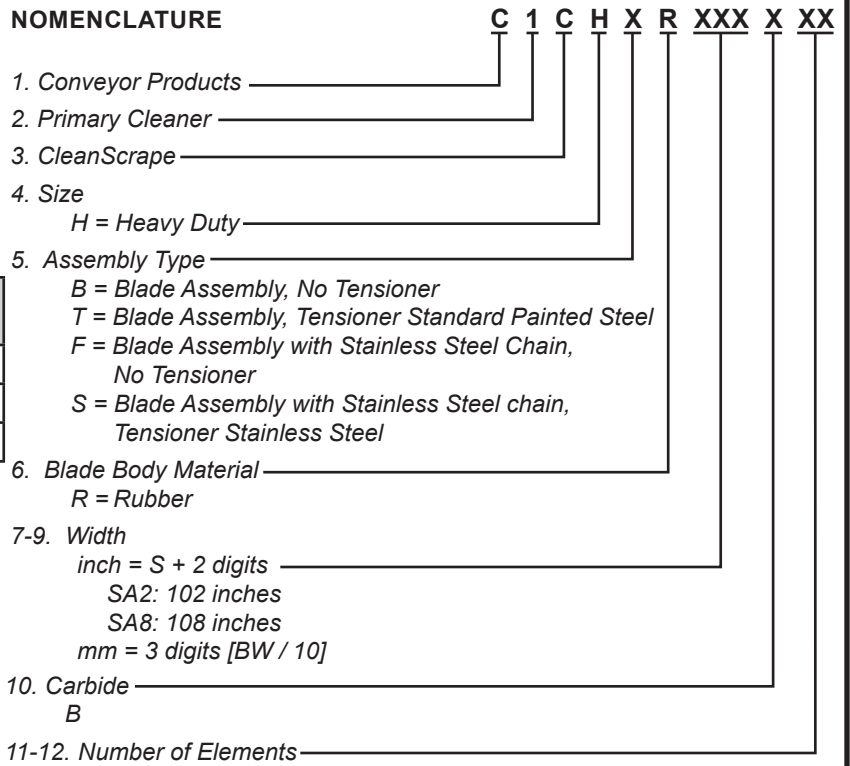
### TENSIONER SELECTION

Size	Belt Width mm (in.)	Tensioner
H	≤ 1400 mm (≤ 54")	Single 4.2kN
H	< 2000 mm (> 78")	Dual 4.2kN
H	≥ 2000 mm (≥ 78")	Dual 6.6kN

**For Assemblies with Ceramic Tiles:**

**Add a "C" to the End of the Part Number.**

### NOMENCLATURE



**Martin Engineering USA**  
 One Martin Place  
 Neponset, IL 61345-9766 USA  
 800 544 2947 or 309 852 2384  
 Fax 800 814 1553  
[www.martin-eng.com](http://www.martin-eng.com)

**COMPANY WITH  
 QUALITY SYSTEM  
 CERTIFIED BY DNV  
 ISO 9001**