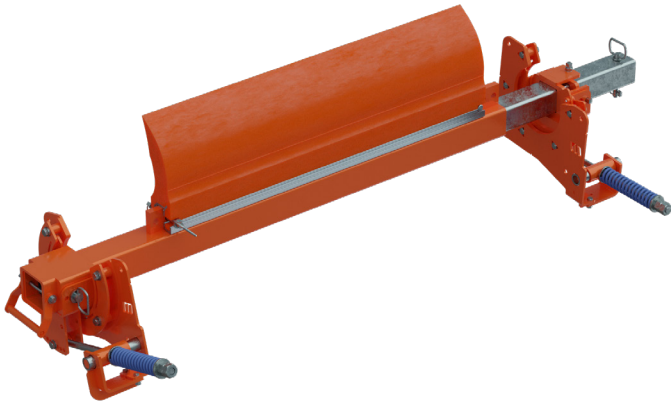


Martin® QC1™ Cleaner XHD STS™



The [Martin® QC1™ Cleaner XHD STS™](#) tackles the tough jobs. Designed for rugged conditions, this sturdy cleaner's stainless steel mandrel allows the blade cartridge to be serviced without confined space entry or breaking the safety plane. Changing the blade is a simple one-pin operation, making replacement of a worn blade a safe and simple procedure.

The Martin® QC1™ Cleaner XHD STS™ includes a Martin® Spring Tensioner XHD STS™ to maintain proper cleaning pressure while minimizing the need for adjustment.

BENEFITS

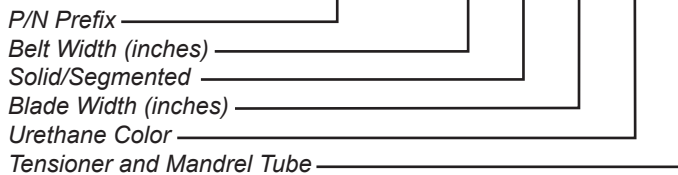
- Safe To Service**
 The blade can be replaced from outside the chute wall or the conveyor structure without breaking the safety plane.
- Fast Blade Change Cuts Service Expense**
 One-pin blade replacement makes blade replacement a fast and easy operation.
- Matched Tensioner Maintains Consistent Cleaning**
 Martin® QC1™ Cleaner XHD STS™ and Martin® Spring Tensioner XHD STS™ are system-engineered to preserve the cleaning edge from high belt speeds and multiple splices.
- Curved Blade Provides Consistent Cleaning**
 Patented "CARP" (Constant Angle Radial Pressure) design maintains cleaning performance through all stages of blade life.
- Rugged Construction Suits Tough Conditions**
 Mainframe of rugged 3/8-in. (9.5-mm) thick DOM steel tubing has steel bar backbone. Aluminum extrusion in blade base holds cleaner snugly to backbone.
- Blade Materials Match Application**
 Martin Engineering's urethane expertise provides blades to suit standard, high-temperature, or high-abrasion conditions.
- The Most Cleaner, the Least Investment**
 Economical pre-cleaner and tensioner system combines effective cleaning, durable life, and low-maintenance requirements.

NOTES

Normal blade length is belt width less 6 in. (150 mm). For belts with a 45° trough or where material is centered on belt, customer should consider a blade that is belt width less 12 in. (300 mm). This is because belt edges may not require cleaning, and blade-to-belt friction in these areas may lead to premature wear of cleaner and/or belt.

NOMENCLATURE

STSXHD**QC**- **XX** **XX** **XX** **XX** **X**



BELT WIDTH

Belt Width in Inches

SOLID/SEGMENTED

- 00: No Blade
- 10: Segmented Blade with Slots
- 11: Solid Blade with Slots

BLADE WIDTH

00: No Blade

URETHANE COLOR

- 00: No Blade
- BR: Brown
- CL: Tan
- GR: Green
- NB: Navy Blue
- CY: Yellow with Beads
- Blank: Orange

TENSIONER AND MANDREL TUBE

- T: Spring Tensioner
- A: Air Tensioner
- Blank: No Tensioner or Mandrel Tube

FREQUENTLY ASKED QUESTIONS

My Pre-Cleaner keeps flipping through. What is wrong?
The mounting location may be too far away from the belt. Relocate to the proper mounting location. Replace the mainframe or end weldments if they are bent. Check set screws to determine if they are tight. Retighten if necessary.

My Pre-Cleaner is wearing more in the center of the blade.
The blade is too wide for this application. Replace with a shorter length blade.

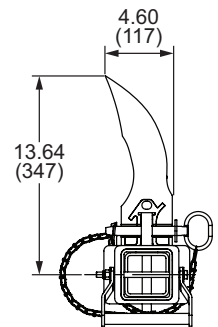
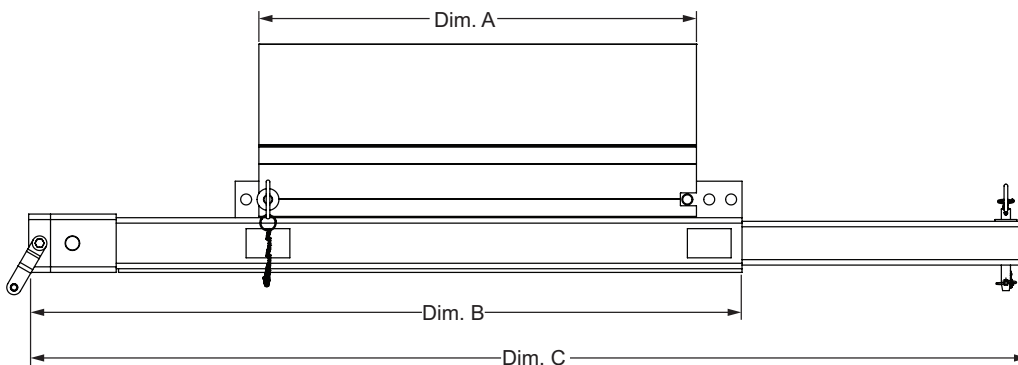
TECHNICAL DATA SHEET

SPECIFICATIONS & DIMENSIONS – in. (mm)

Part Number STSXHDQC-XXXXXXXX (belt width less 6 in.)				
Part Number	Belt Width in (mm)	Dim. A Blade in (mm)	Dim. B Mainframe in (mm)	Dim. C Mandrel in (mm)
STSXHDQC-24XX18XXX	24 (600)	18 (457)	36.91 (938)	56.50 (1435)
STSXHDQC-30XX24XXX	30 (750)	24 (610)	42.91 (1090)	62.50 (1588)
STSXHDQC-36XX30XXX	36 (900)	30 (762)	48.91 (1242)	68.50 (1740)
STSXHDQC-42XX36XXX	42 (1050)	36 (915)	54.91 (1395)	74.50 (1892)
STSXHDQC-48XX42XXX	48 (1200)	42 (1067)	60.91 (1547)	80.50 (2045)
STSXHDQC-54XX48XXX	54 (1350)	48 (1219)	66.91 (1700)	86.50 (2197)
STSXHDQC-60XX54XXX	60 (1500)	54 (1372)	72.91 (1852)	92.50 (2350)
STSXHDQC-66XX60XXX	66 (1650)	60 (1524)	78.91 (2004)	98.50 (2502)
STSXHDQC-72XX66XXX*	72 (1800)	66 (1676)	84.91 (2157)	104.50 (2654)
STSXHDQC-78XX72XXX*	78 (2000)	72 (1829)	90.91 (2309)	110.50 (2807)
Part Number STSXHDQC-XXXXXXXX (belt width less 12 in.)				
STSXHDQC-24XX12XXX	24 (600)	12 (305)	36.91 (938)	56.50 (1435)
STSXHDQC-30XX18XXX	30 (750)	18 (457)	42.91 (1090)	62.50 (1588)
STSXHDQC-36XX24XXX	36 (900)	24 (610)	48.91 (1242)	68.50 (1740)
STSXHDQC-42XX30XXX	42 (1050)	30 (762)	54.91 (1395)	74.50 (1892)
STSXHDQC-48XX36XXX	48 (1200)	36 (915)	60.91 (1547)	80.50 (2045)
STSXHDQC-54XX42XXX	54 (1350)	42 (1067)	66.91 (1700)	86.50 (2197)
STSXHDQC-60XX48XXX	60 (1500)	48 (1219)	72.91 (1852)	92.50 (2350)
STSXHDQC-66XX54XXX	66 (1650)	54 (1372)	78.91 (2004)	98.50 (2502)
STSXHDQC-72XX60XXX	72 (1800)	60 (1524)	84.91 (2157)	104.50 (2654)
STSXHDQC-78XX66XXX*	78 (2000)	66 (1676)	90.91 (2309)	110.50 (2807)

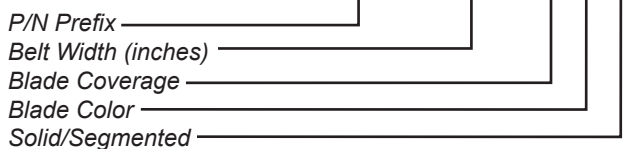
*Available for -XX10XXCYX Only

MARTIN® QC1™ CLEANER XHD STS™, P/N STSXHDQC-XXXXXXXX



REPLACEMENT BLADE NOMENCLATURE

C1QCEBS- XX S X X X



BELT WIDTH

Belt Width in Inches

BLADE COVERAGE

6: 6" Less Belt Width
C: 12" Less Belt Width

BLADE COLOR

B: Brown
G: Green
N: Navy Blue
O: Orange
T: Tan
C: Yellow with Ceramic Beads

SOLID/SEGMENTED

2: segmented blade with slots
3: solid blade with slots

Problem Solved™ GUARANTEED!

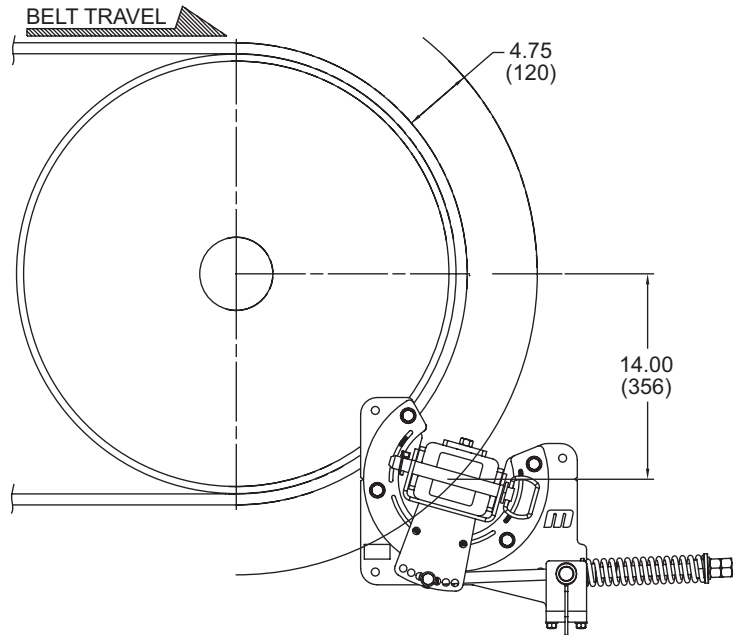
Form No. L3997-10/24
© Martin Engineering Company 2014, 2023

TECHNICAL DATA SHEET

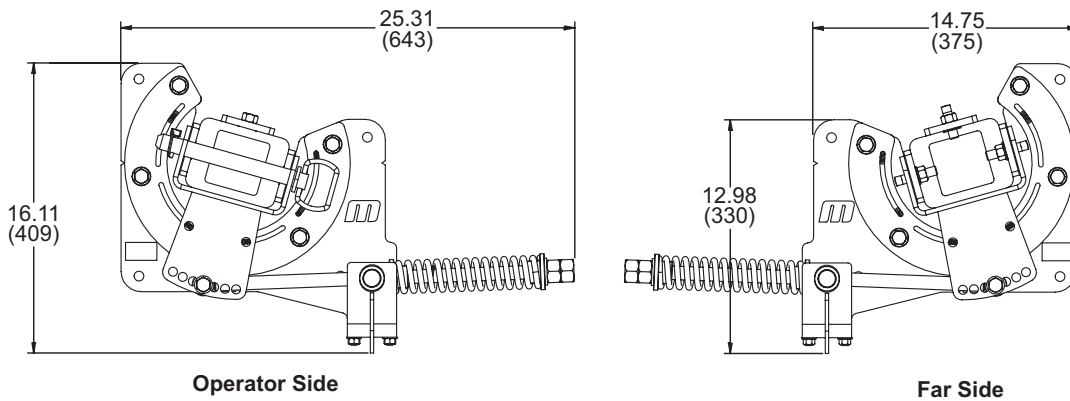
INSTALLATION AND MOUNTING

Installation Recommendations:

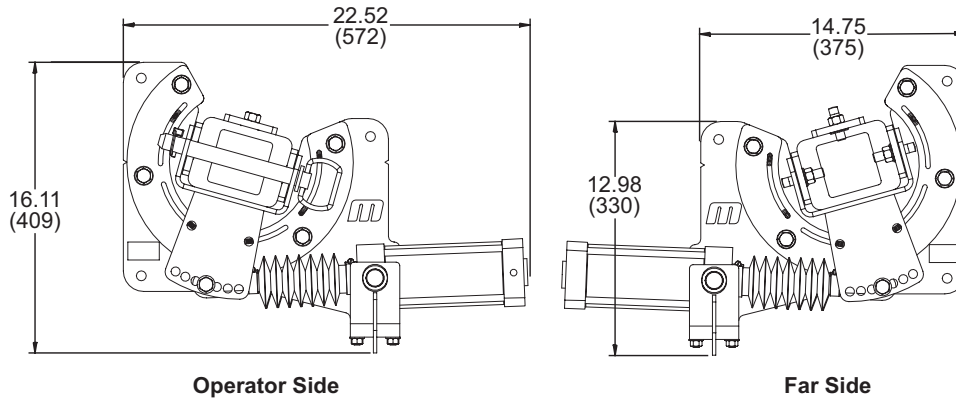
Head Pulley Diameter	24 in. – 30 in. (609.6 – 762 mm)
Maximum Belt Speed	1200 fpm (6 m/s)



MARTIN® SPRING TENSIONER XHD STS™, P/N 39100-XHDSXSQ



MARTIN® AIR TENSIONER XHD STS™, P/N 39100-XHDASQ



Martin Engineering USA
 One Martin Place
 Neponset, IL 61345-9766 USA
 800 544 2947 or 309 852 2384
 Fax 800 814 1553
 www.martin-eng.com

**COMPANY WITH
 QUALITY SYSTEM
 CERTIFIED BY DNV GL
 = ISO 9001 =**

Problem Solved™ GUARANTEED!

Form No. L3997-10/24
 © Martin Engineering Company 2014, 2023