

## Boot-Lift® Railcar Connector

Plant Name: \_\_\_\_\_  
 Address: \_\_\_\_\_  
 City: \_\_\_\_\_  
 State: \_\_\_\_\_ Zip Code: \_\_\_\_\_

Contact Person: \_\_\_\_\_  
 Telephone: \_\_\_\_\_ Fax: \_\_\_\_\_  
 Email: \_\_\_\_\_  
 Date: \_\_\_\_\_

### Material Conditions

Type of Material: \_\_\_\_\_

Equipment needs to be Food-Grade:      Yes                  No

### Optional Accessories

Aligner (moves Boot-Lift® 3-4" either direction parallel to rails):      Pneumatic      Manual      None

Funnel Grizzly:      AR500      304SS      **Opening:**      2"      3"      4"

Adapter Sheet:      Yes                  No

Adapter Sheet Material:      Plywood      Mild Steel      Stainless Steel      HDPE (High Density Polyethylene)

Foam Seal:      Standard      Cover White Hypalon Wrapped      White FDA Neoprene

Funnel Cover:      Mild Steel      Stainless Steel      Aluminum

Vibration needed to aid the flow of material:      Yes                  No

Railcar Gate Opener needed to assist with gate opening:      Yes                  No

### Railcar Information

Type of Railcar:      Single Gate      Double Gate      Round Gate

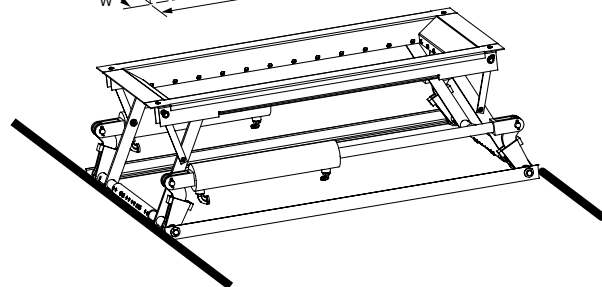
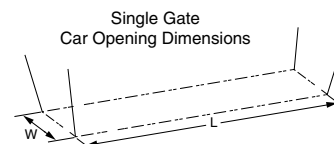
Inner dimensions of railcar discharge gate:

Single Gate: Width (W) \_\_\_\_\_ x Length (L) \_\_\_\_\_

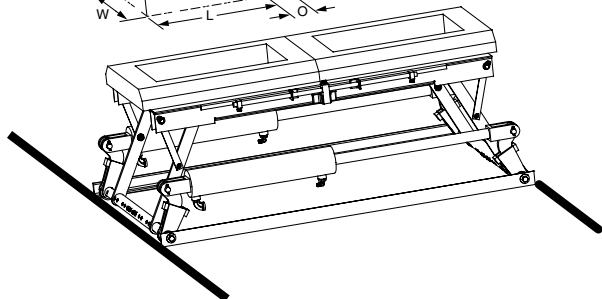
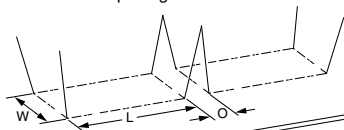
Double Gate: Width (W) \_\_\_\_\_ x Length (L) \_\_\_\_\_

Distance between openings (O) \_\_\_\_\_

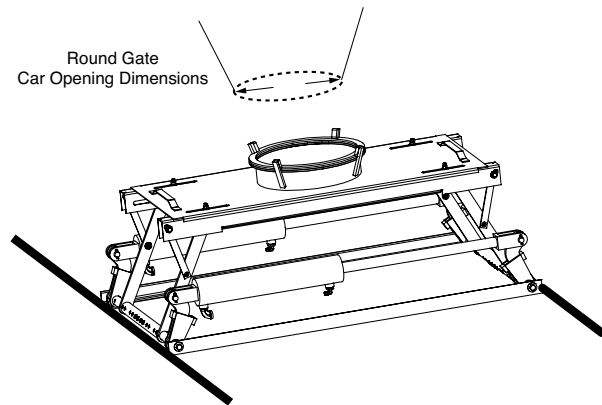
Round Gate: Diameter = \_\_\_\_\_ I.D.



Double Gate Car Opening Dimensions



Round Gate Car Opening Dimensions



# APPLICATION DATA SHEET

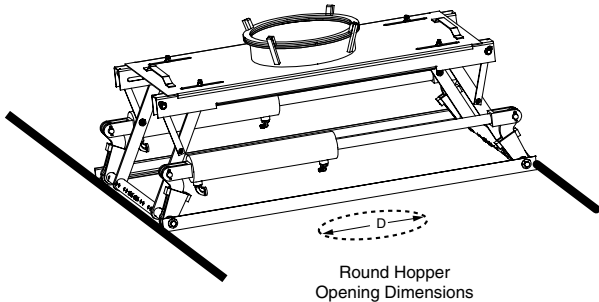
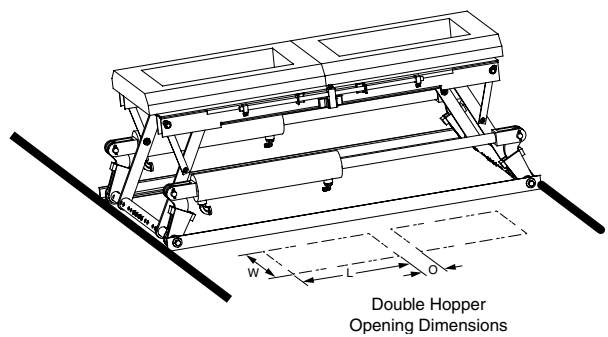
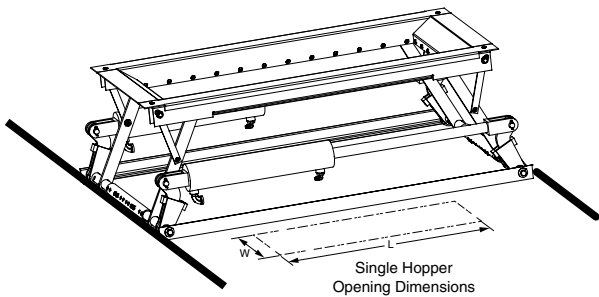
## Receiving Hopper Information

**Boot-Lift® Railcar Connector Model:** SBL-13 (P/N 39589) SBL-18 (P/N RC10042) DBL-18 (P/N 17840)  
 SBL-24 (P/N 19760) SBL-30 (P/N 35038) SBL-35 (P/N 39594) SBL-48 (P/N 39595)  
 SBLR-18 (P/N 21055) SBLW-30 (P/N RC10005) SBLW-48 (P/N RC10006)

**Boot Material:** Black Vinyl Food Grade Flame Retardant

For new installations or modifications, Martin Engineering strongly recommends dimension H be a 3 in. minimum.

<b>Single openings</b>	Length (L) _____ x Width (W) _____  Bottom of rail to top of hopper (H) _____	
<b>Double openings</b>	Length (L) _____ x Width (W) _____  Distance between openings (O) _____  Bottom of rail to top of hopper (H) _____	
<b>Round openings</b>	Diameter (D) _____  Bottom of rail to top of hopper (H) _____	



**Martin Engineering USA**  
 One Martin Place  
 Neponset, IL 61345-9766 USA  
 800 544 2947 or 309 852 2384  
 Fax 800 814 1553  
 www.martin-eng.com

*To submit the completed form please  
 fax to 309-594-2432  
 Attention: Flow-Aids Technical Support  
 or click here to email  
[railcar@martin-eng.com](mailto:railcar@martin-eng.com)*

**COMPANY WITH  
 QUALITY SYSTEM  
 CERTIFIED BY DNV GL  
 = ISO 9001 =**

**Problem Solved™ GUARANTEED!**

Form No. L3729-08/23  
 © Martin Engineering Company 2007, 2023