

# Boot-Lift® Railcar Connector



The **Boot-Lift® Railcar Connector** installs on the track flanges. Sponge seals fit securely to the hopper car unloading gates for a clean transfer of material to the under-track conveying system.

## SPECIFICATIONS

<b>Controls</b>	All assemblies include the appropriate control console.
<b>Air Requirements</b>	1 cfm (0.47 L/sec) at 90 psi (6.2 bar). Air line should include filter, regulator, and lubricator.
<b>Boot Material</b>	Standard material is 22 oz. black vinyl-covered cloth. Other materials are available, including polyethylene lined; white hypalon-coated cloth; food-grade polyethylene-lined polypropylene; and flame retardant coated polyester.

## ACCESSORIES

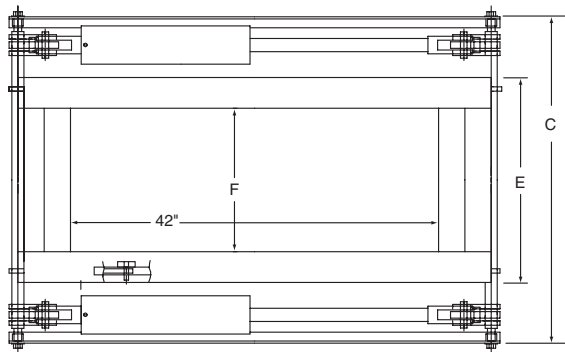
- **TRANSITION FUNNELS**  
These convert various models from double- to single-pocket unloading or from single- to double-pocket unloading. Simply remove the standard sponge seals and install the appropriate transition funnel and adapter sheet.  
DBL Transition Funnel..... P/N 17272  
DBL Adapter Sheet.....P/N DBL-18AS  
Converts DBL and DBL-GATX to SBL; requires DBL Adapter Sheet to fit opening.
- **ADAPTER SHEETS**  
Rugged plywood adapters provide the proper discharge opening to suit various cars. Consult your Martin Engineering representative for specific adapter sheet requirements.  
SBL Adapter Sheet.....P/N SBL-13AS  
SBL Adapter Sheet.....P/N SBL-24AS  
SBL Adapter Sheet.....P/N SBL-30AS  
SBL Adapter Sheet.....P/N SBL-35AS  
SBL Adapter Sheet.....P/N SBL-48AS
- **PNEUMATIC ALIGNER**  
Air-powered aligner provides 8 in. (200 mm) of adjustment—4 in. (100 mm) in either direction—along the track. Remote control; requires only 1 cfm (0.47 L/sec) at 30 psi (2 bar) of air.  
Boot-Lift® Pneumatic Aligner.....P/N 34140
- **MANUAL ALIGNER**  
Simplifies car positioning by allowing manual adjustment of up to 6 in. (150 mm) total—3 in. (75 mm) in either direction—along the track.  
Boot-Lift® Manual Aligner.....P/N 17326
- **CYLINDER COVERS**  
Rugged vinyl-covered cloth covers prevent damage and contamination of air cylinders from material buildup and environmental conditions.  
Lift Cylinder Covers.....P/N 18335  
Spread Cylinder Covers.....P/N 18331
- **FUNNEL COVERS**  
SBL-13.....P/N 39532-CA  
SBL-24.....P/N 19544  
SBL-30.....P/N 34884-CA  
DBL-18/DBLG-18.....P/N 18420
- **FUNNEL GRIZZLY**  
Contact Martin Engineering for more information.
- **REPLACEMENT PARTS**  
Replacement boots, sponge seals, and other components are available; see your Martin Engineering representative for more information.

# TECHNICAL DATA SHEET

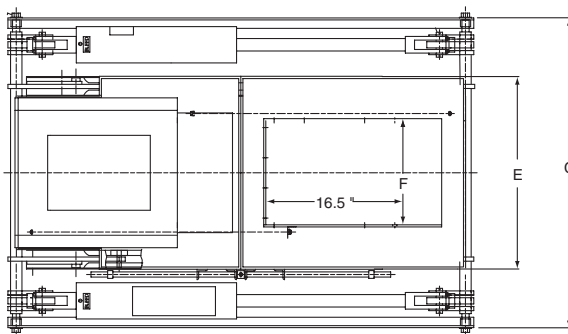
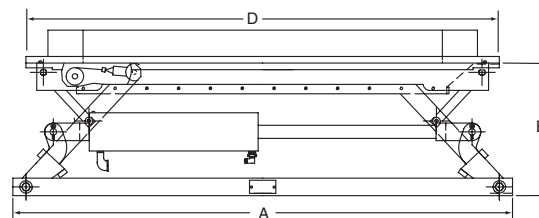
## DIMENSIONS—in. (mm)

Model	A	B		C	D	E	F Funnel Opening
		Extended	Retracted				
SBL-13	57 (1448)	18.62 (473)	3.94 (100)	36.38 (924)	54 (1372)	23.1 (588)	13 (330)
SBL-24	57 (1448)	18.62 (473)	3.94 (100)	40.38 (1026)	54 (1372)	29.1 (740)	22 (559)
SBL-30	57 (1448)	18.62 (473)	3.94 (100)	48.38 (1229)	54 (1372)	37.1 (943)	30 (762)
SBL-35	57 (1448)	18.62 (473)	3.94 (100)	53.38 (1356)	54 (1372)	42.1 (1070)	35 (889)
SBL-48	57 (1448)	18.62 (473)	3.94 (100)	66.38 (1686)	54 (1372)	55.1 (1401)	48 (1219)
SBLR-18	57 (1448)	18.92 (481)	6.02 (153)	36.38 (924)	51.5 (1308)	29.2 (742)	Ø 15 (381)
DBL-18	57 (1448)	15.17 (385)	5.34 (136)	36.38 (924)	54 <sup>†</sup> (1372)	19.50 (495)	11.25 (286)
DBL-18-GATX	57 (1448)	15.17 (385)	5.70 (145)	36.38 (924)	54 <sup>††</sup> (1372)	18.00 (457)	9.00 (229)

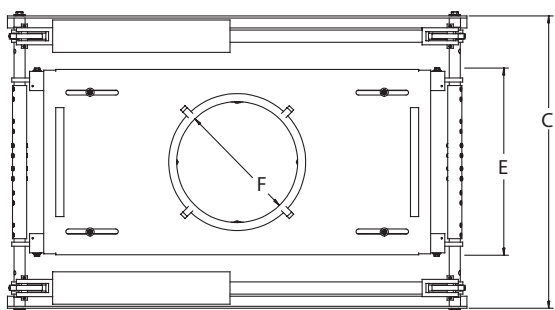
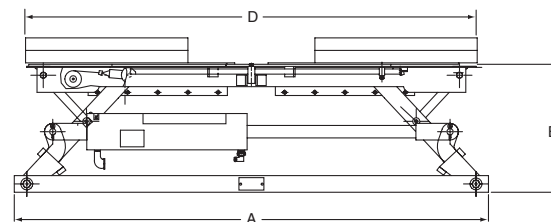
<sup>†</sup>Extended 69 in. [1752.6 mm]    <sup>††</sup>Extended 76.63 in. [1946.4 mm]



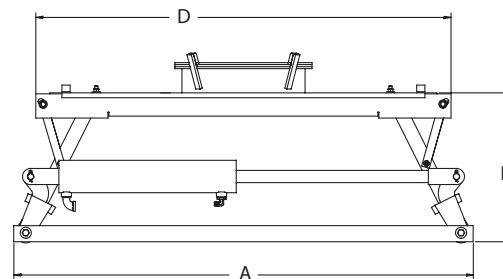
SBL-13, SBL-24, SBL-30, SBL-35, SBL-48



DBL-18, DBL-18-GATX



SBLR-18



**Martin Engineering USA**  
 One Martin Place  
 Neponset, IL 61345-9766 USA  
 800 544 2947 or 309 852 2384  
 Fax 800 814 1553  
 www.martin-eng.com

**COMPANY WITH  
 QUALITY SYSTEM  
 CERTIFIED BY DNV GL  
 = ISO 9001 =**

**Problem Solved™ GUARANTEED!**

Form No. L3406-07/20  
 © Martin Engineering Company 1997, 2020